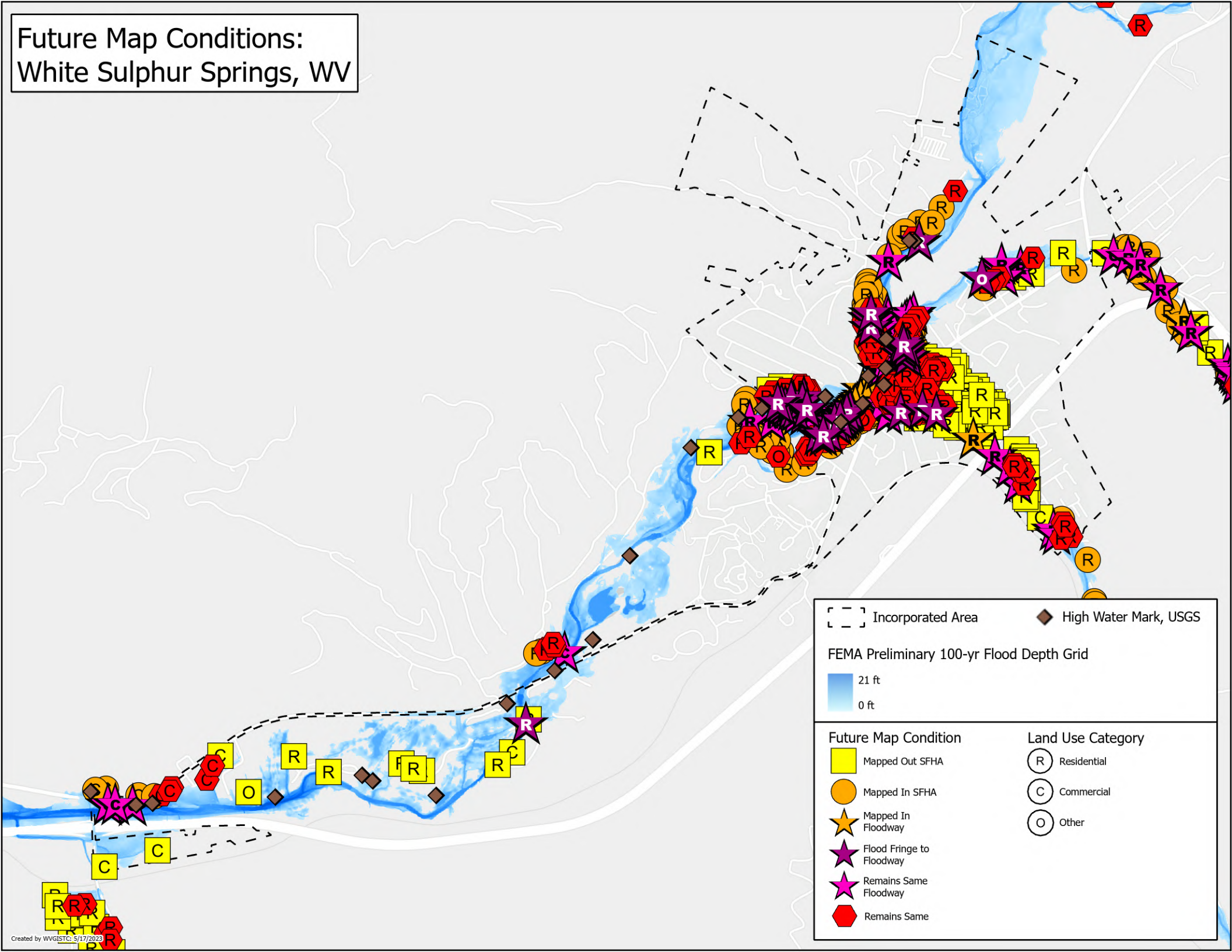


# Future Map Conditions: White Sulphur Springs, WV



[ - - ]	Incorporated Area	◆	High Water Mark, USGS
<b>FEMA Preliminary 100-yr Flood Depth Grid</b>			
■	21 ft		
■	0 ft		
<b>Future Map Condition</b>		<b>Land Use Category</b>	
■	Mapped Out SFHA	(R)	Residential
●	Mapped In SFHA	(C)	Commercial
★	Mapped In Floodway	(O)	Other
★	Flood Fringe to Floodway		
★	Remains Same Floodway		
★	Remains Same		