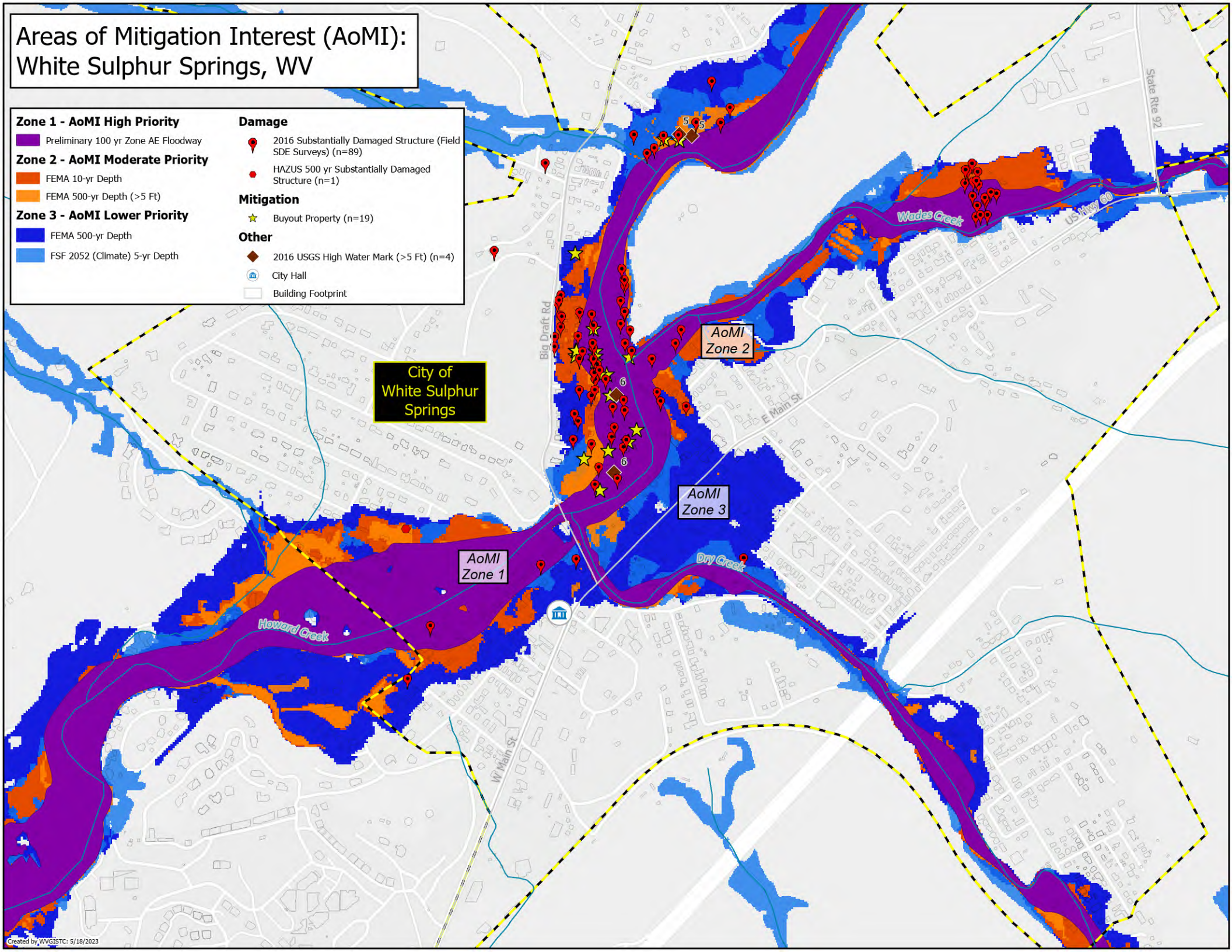


# Areas of Mitigation Interest (AoMI): White Sulphur Springs, WV

<b>Zone 1 - AoMI High Priority</b>	<b>Damage</b>
<ul style="list-style-type: none"> <li>Preliminary 100 yr Zone AE Floodway</li> </ul>	<ul style="list-style-type: none"> <li>2016 Substantially Damaged Structure (Field SDE Surveys) (n=89)</li> <li>HAZUS 500 yr Substantially Damaged Structure (n=1)</li> </ul>
<b>Zone 2 - AoMI Moderate Priority</b>	<b>Mitigation</b>
<ul style="list-style-type: none"> <li>FEMA 10-yr Depth</li> <li>FEMA 500-yr Depth (&gt;5 Ft)</li> </ul>	<ul style="list-style-type: none"> <li>Buyout Property (n=19)</li> </ul>
<b>Zone 3 - AoMI Lower Priority</b>	<b>Other</b>
<ul style="list-style-type: none"> <li>FEMA 500-yr Depth</li> <li>FSF 2052 (Climate) 5-yr Depth</li> </ul>	<ul style="list-style-type: none"> <li>2016 USGS High Water Mark (&gt;5 Ft) (n=4)</li> <li>City Hall</li> <li>Building Footprint</li> </ul>



City of  
White Sulphur  
Springs

AoMI  
Zone 2

AoMI  
Zone 3

AoMI  
Zone 1