

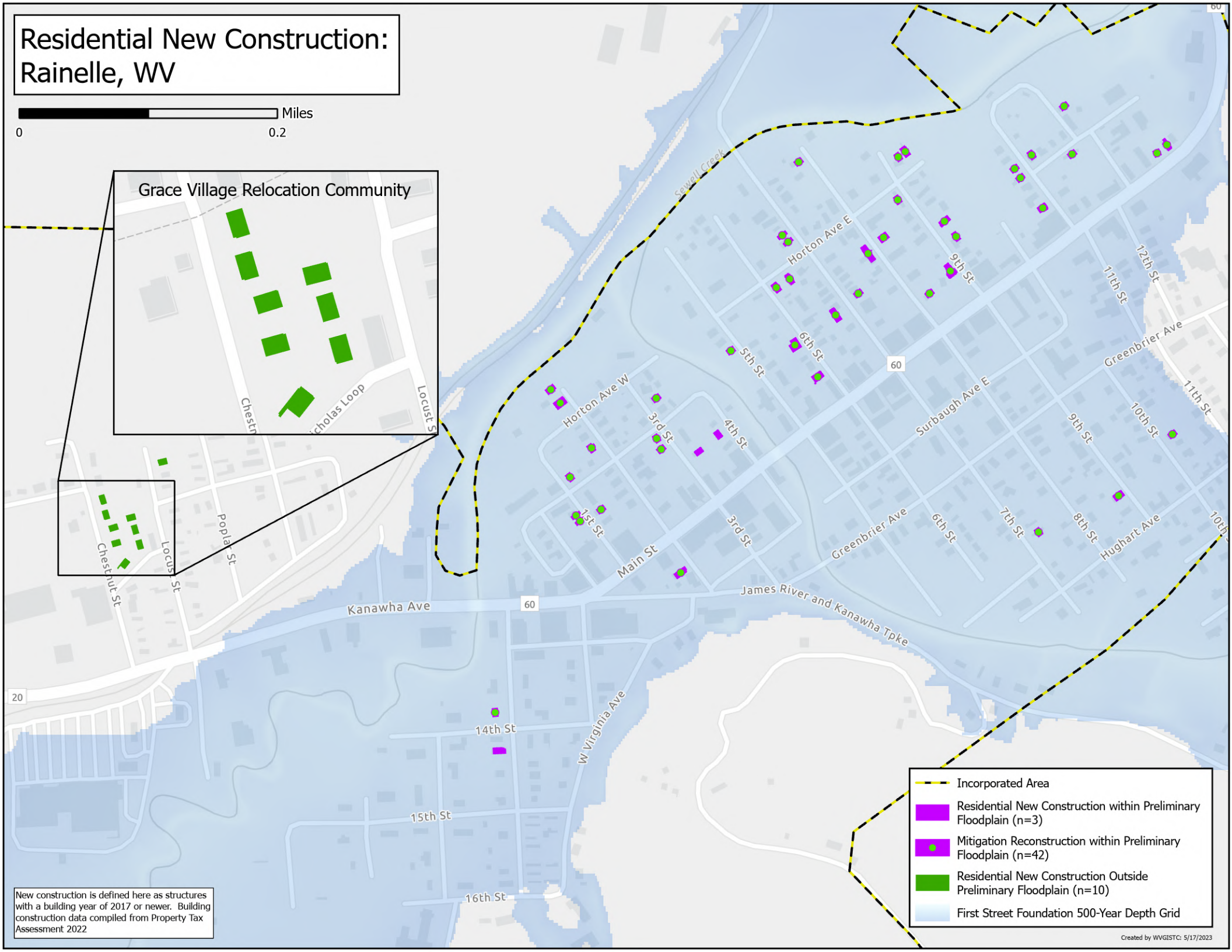
Residential New Construction: Rainelle, WV



Grace Village Relocation Community

Chestnut St
Nicholas Loop
Locust St

Chestnut St
Locust St
Poplar St



- Incorporated Area
- Residential New Construction within Preliminary Floodplain (n=3)
- Mitigation Reconstruction within Preliminary Floodplain (n=42)
- Residential New Construction Outside Preliminary Floodplain (n=10)
- First Street Foundation 500-Year Depth Grid

New construction is defined here as structures with a building year of 2017 or newer. Building construction data compiled from Property Tax Assessment 2022