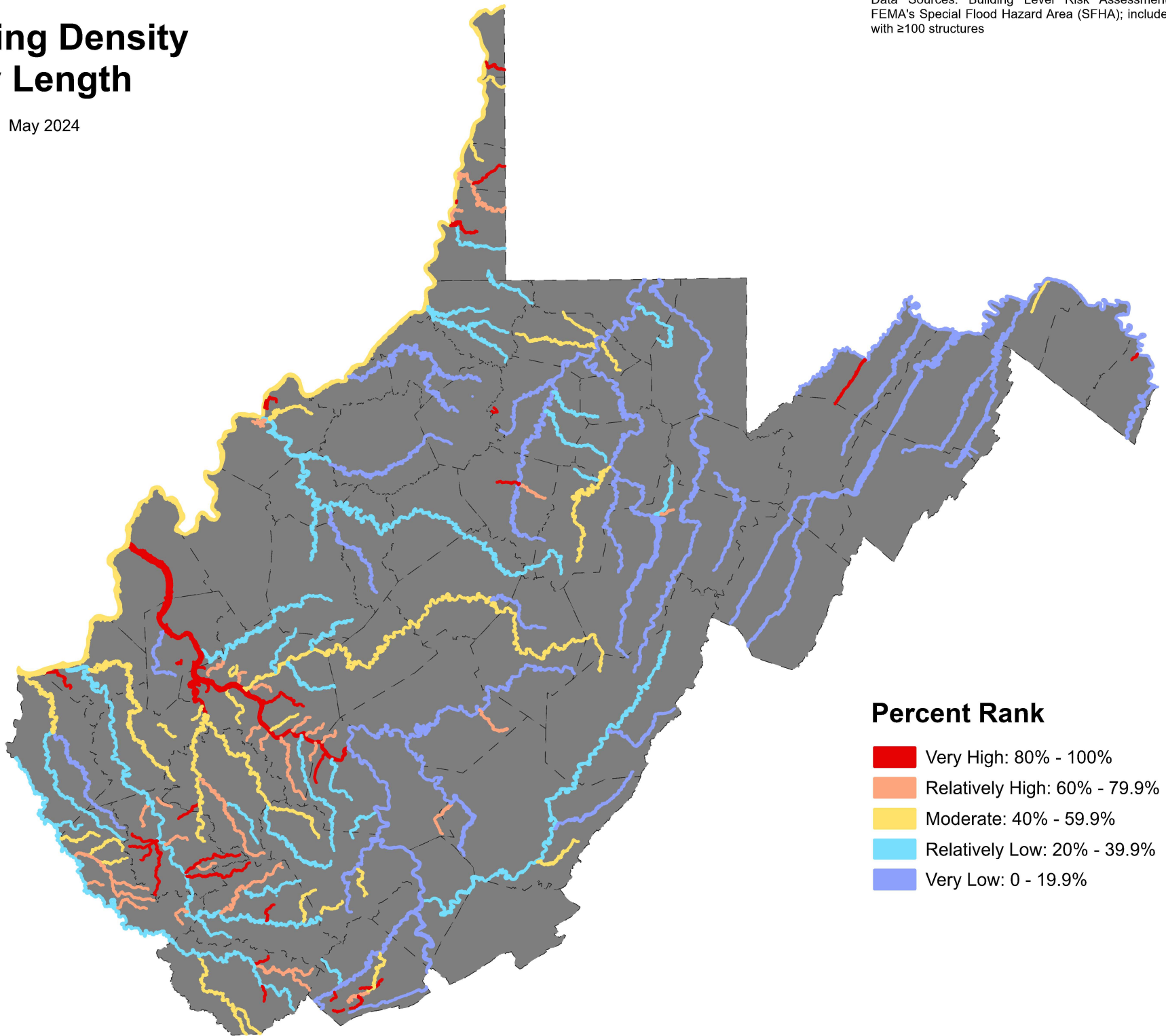


# Building Density by Length

May 2024

Data Sources: Building Level Risk Assessment (BLRA),  
FEMA's Special Flood Hazard Area (SFHA); includes streams  
with  $\geq 100$  structures



## Percent Rank

- Very High: 80% - 100%
- Relatively High: 60% - 79.9%
- Moderate: 40% - 59.9%
- Relatively Low: 20% - 39.9%
- Very Low: 0 - 19.9%