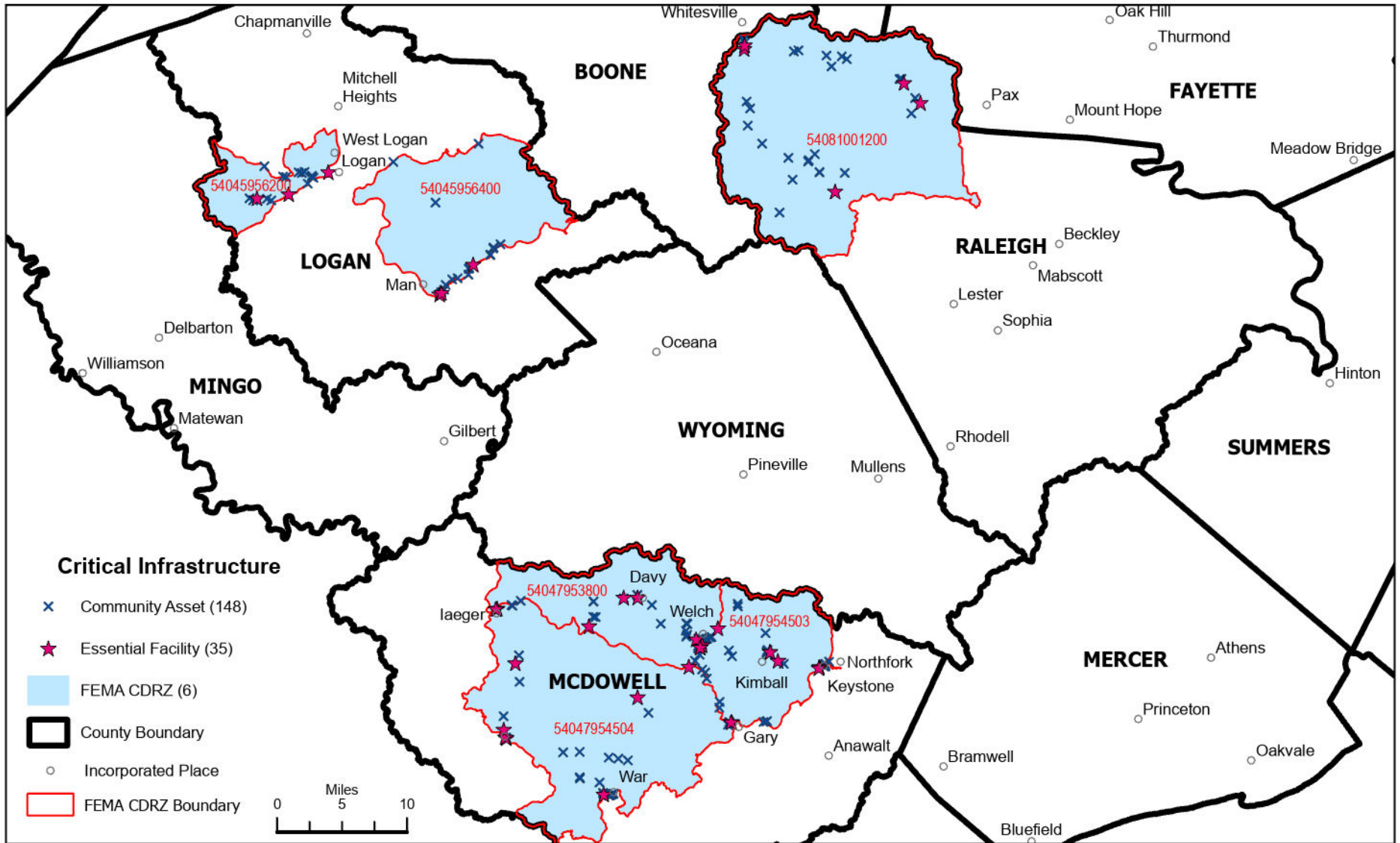


Community Disaster Resiliency Zones in West Virginia

Critical Infrastructure Within Floodplain

January 2024



Critical Infrastructure

- × Community Asset (148)
- ★ Essential Facility (35)
- FEMA CDRZ (6)
- ▭ County Boundary
- Incorporated Place
- ▭ FEMA CDRZ Boundary



13 Communities Affected

Logan	Man, City of Logan, Logan County Unincorporated
McDowell	Bradshaw, Davy, Gary, laeger, Keystone, Kimball, War, Welch, McDowell County Unincorporated
Raleigh	Raleigh County Unincorporated

Critical Infrastructure in CDRZ

County	Community Assets	Essential Facilities
Logan	33	6
McDowell	89	24
Raleigh	26	5