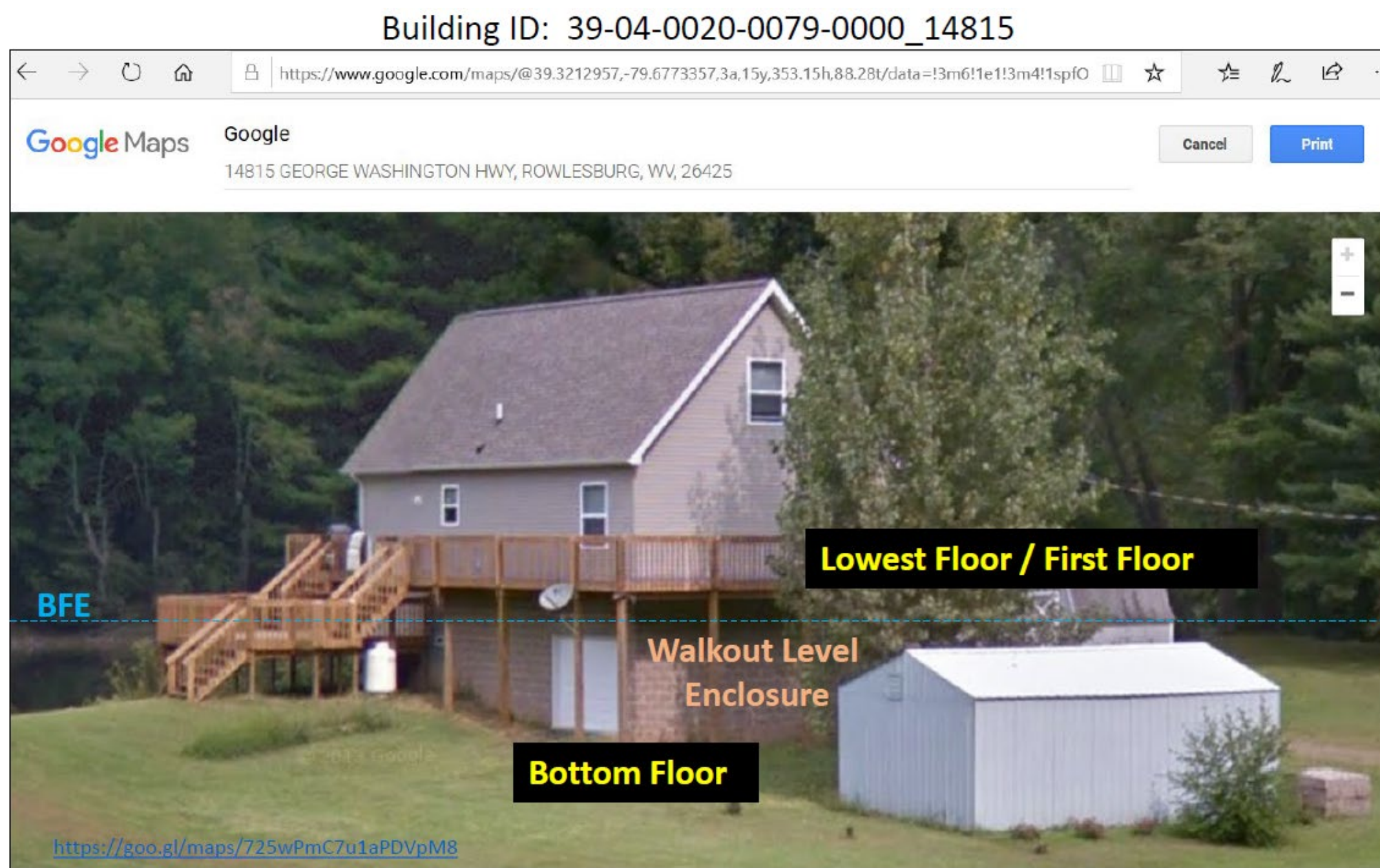


Hazard Mitigation

Structure built with First Floor Height (FFH) above Design Flood Elevation (DFE = BFE + Freeboard)



Elevation Certificates are beneficial for Floodplain Management and Risk Assessments

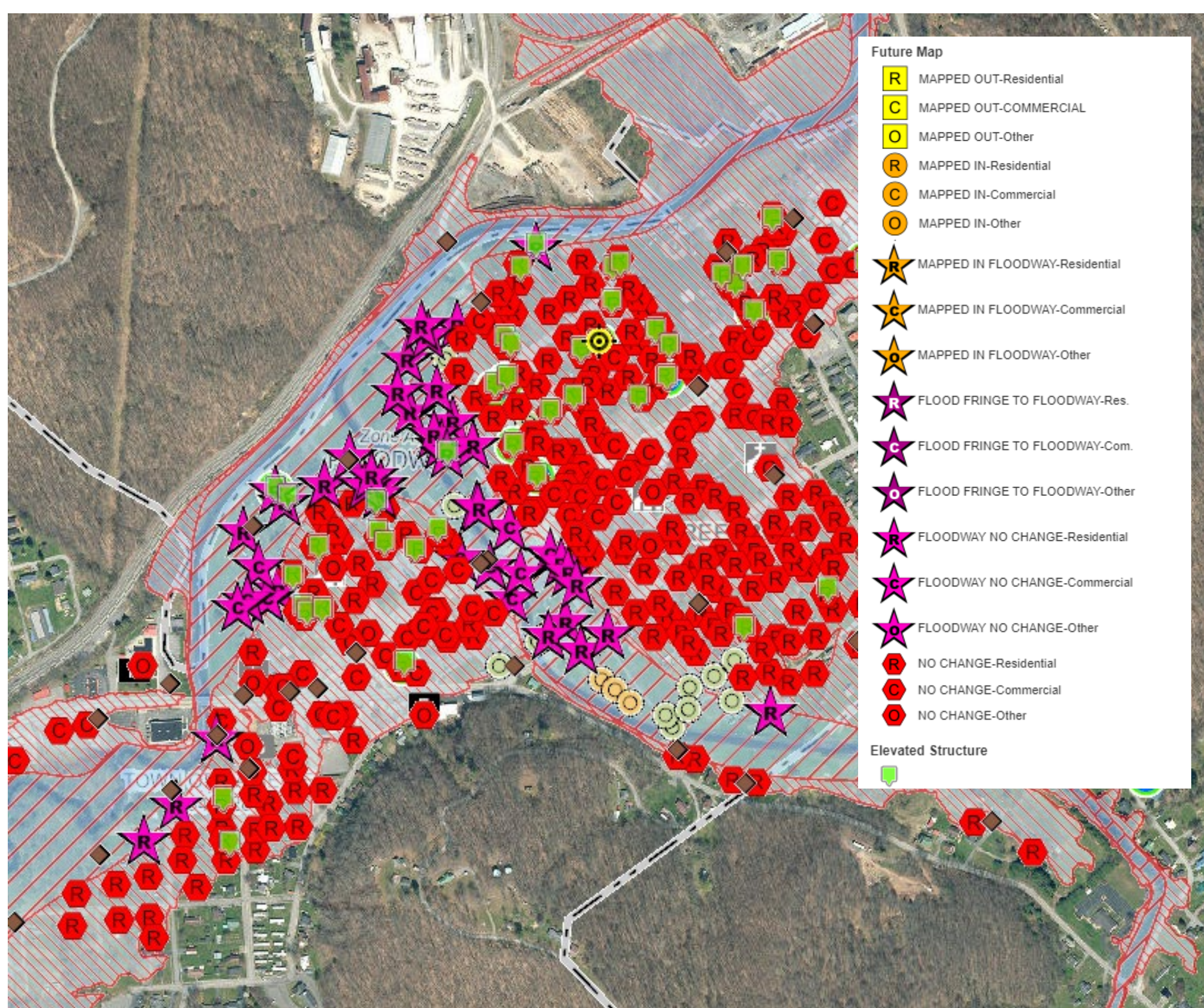
Communities may elect to participate in hazard mitigation buyout programs sponsored by FEMA and other agencies aimed at repetitive loss properties. Parcels are typically deed-restricted to maintain open space and prevent future losses.



Structure Level Risk Assessment

At-risk buildings are depicted with symbols and colors representing severity of risk and changes in status, e.g. "Mapped In" or "Mapped Out."

Buildings in the Floodway are at greatest risk of loss.

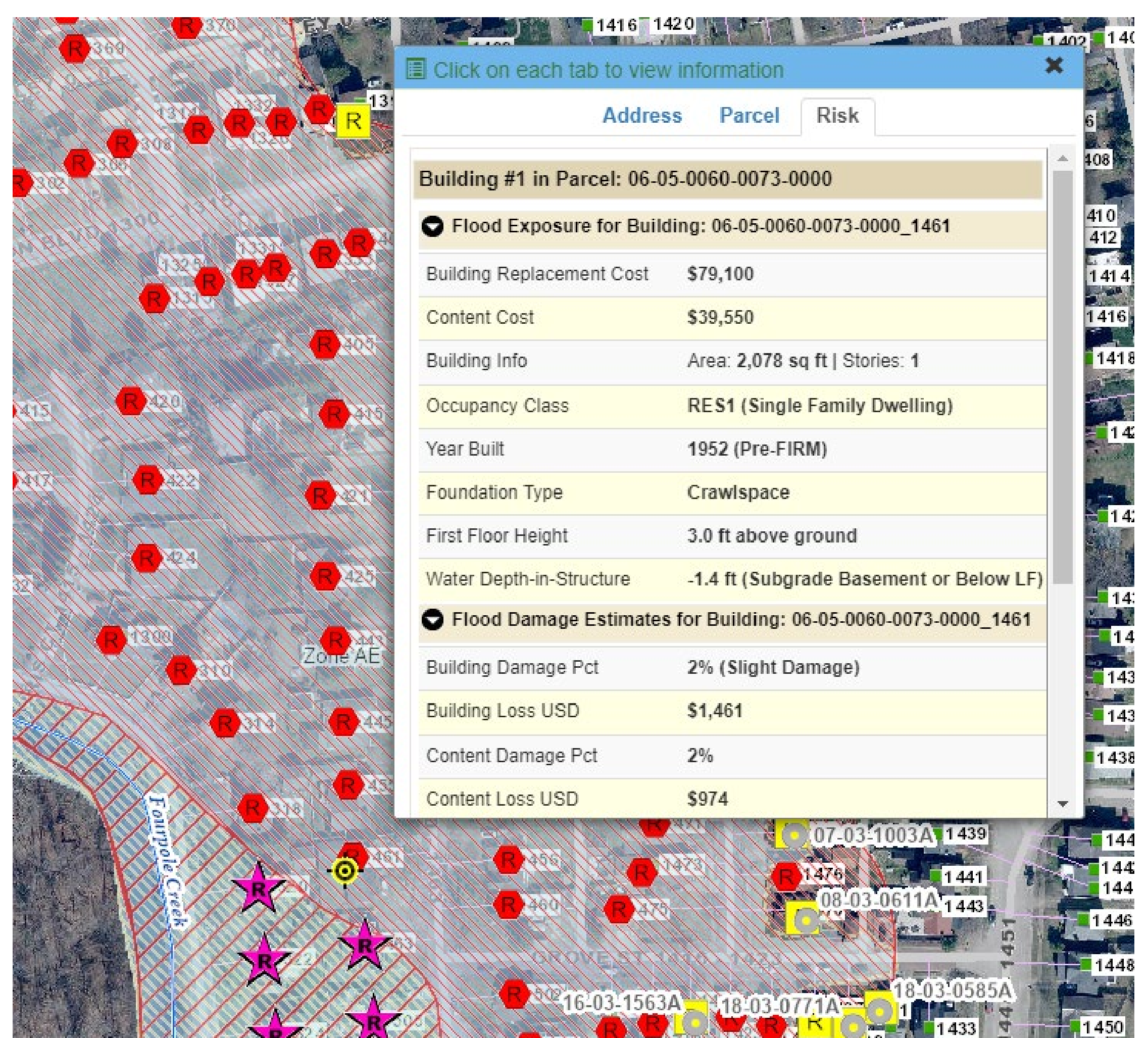


Physical Damage Estimates

- Based on flood depth
- Utilize FEMA loss formulas

Building Types / Value information

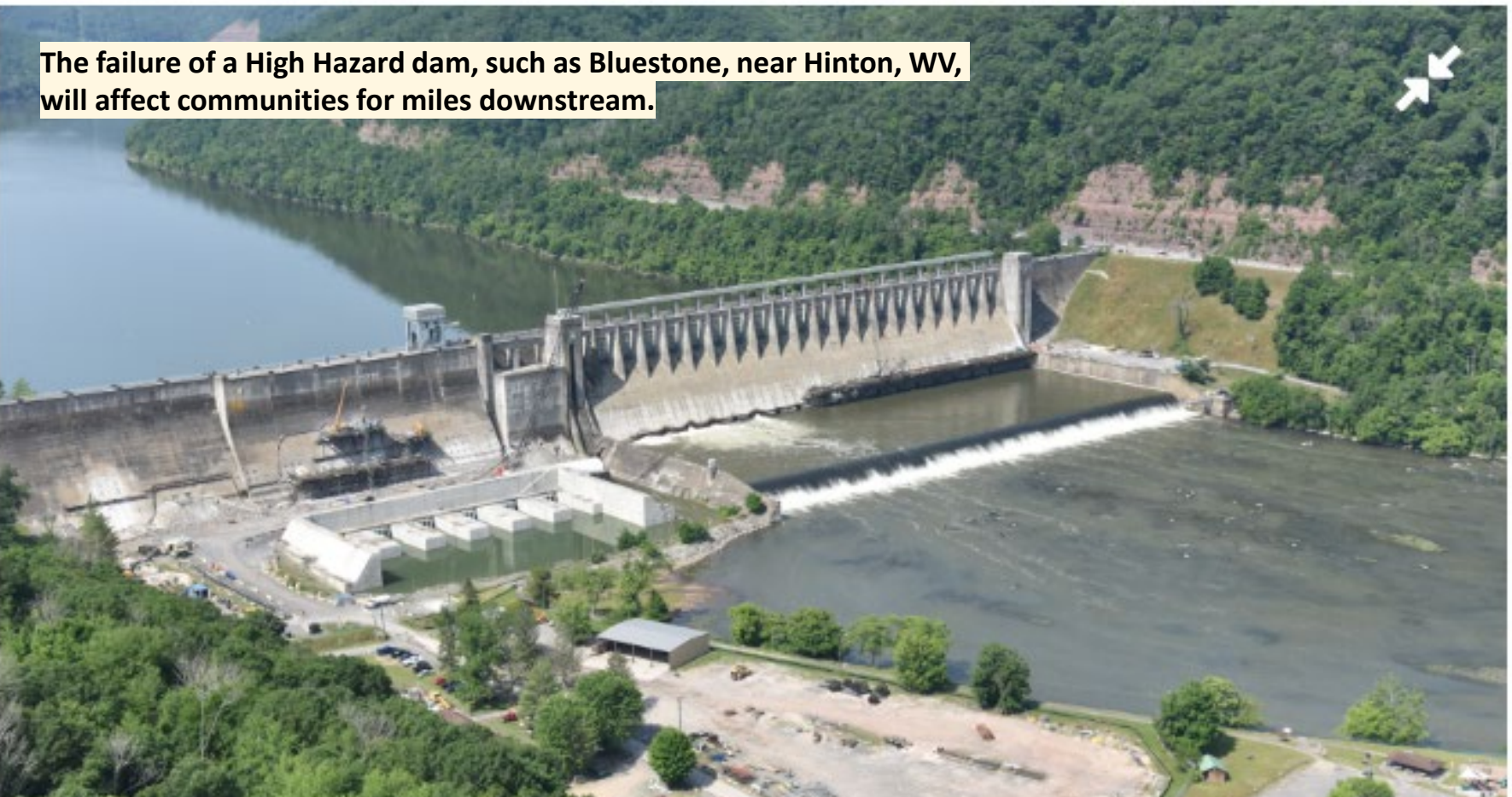
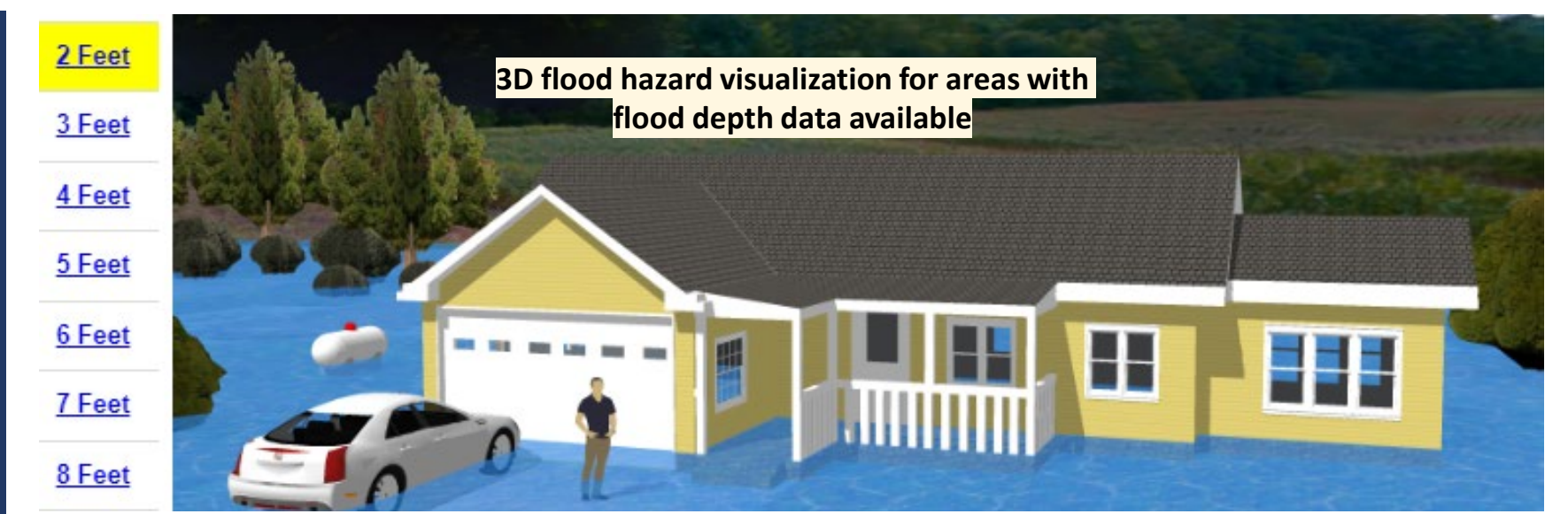
- Based on flood depth



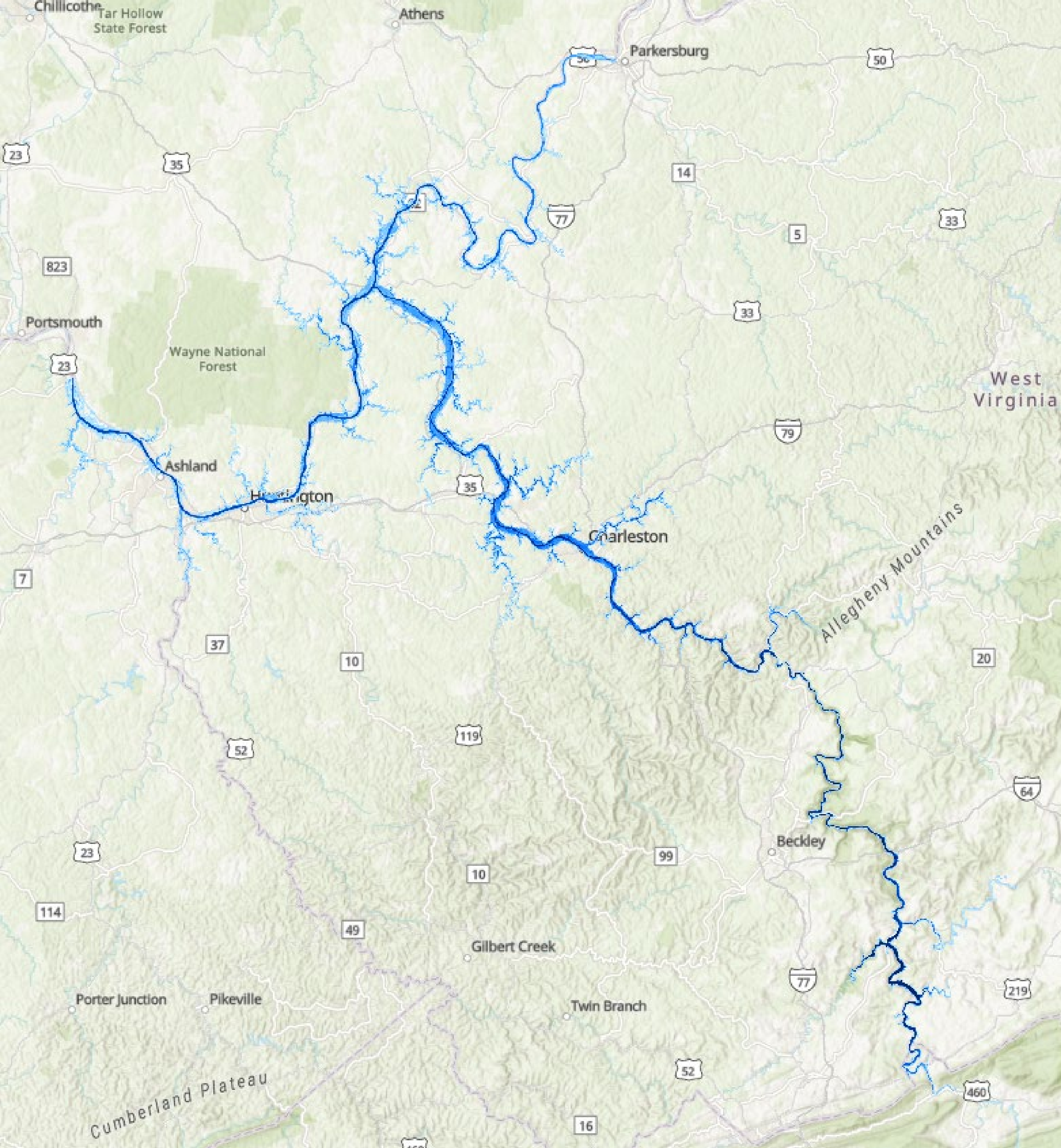
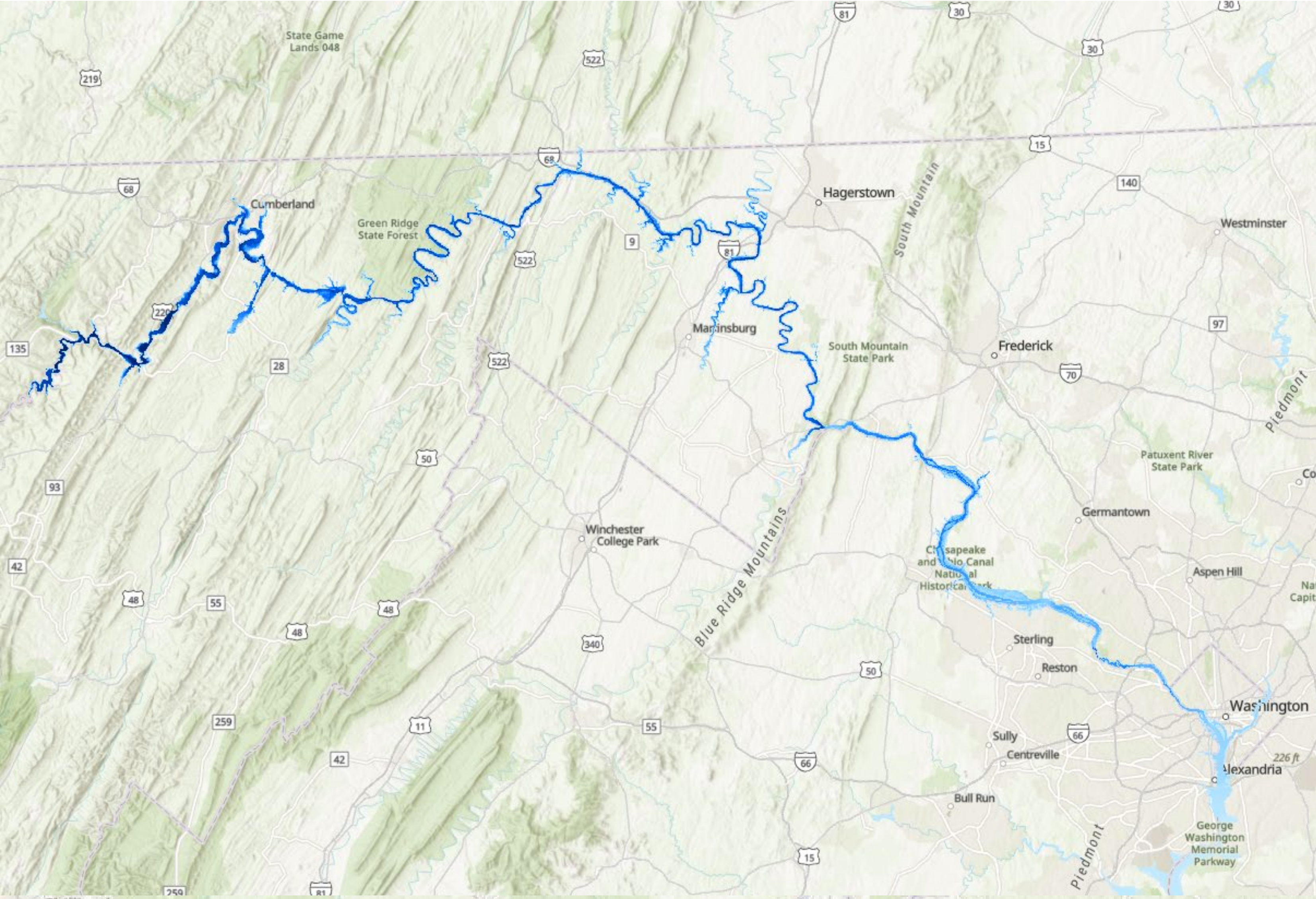
Multi-Hazard Analysis

Landslide susceptibility along the Guyandotte River in Logan County

- Damaged homes along Pine Street correlate with areas of strong susceptibility as determined by landslide modeling



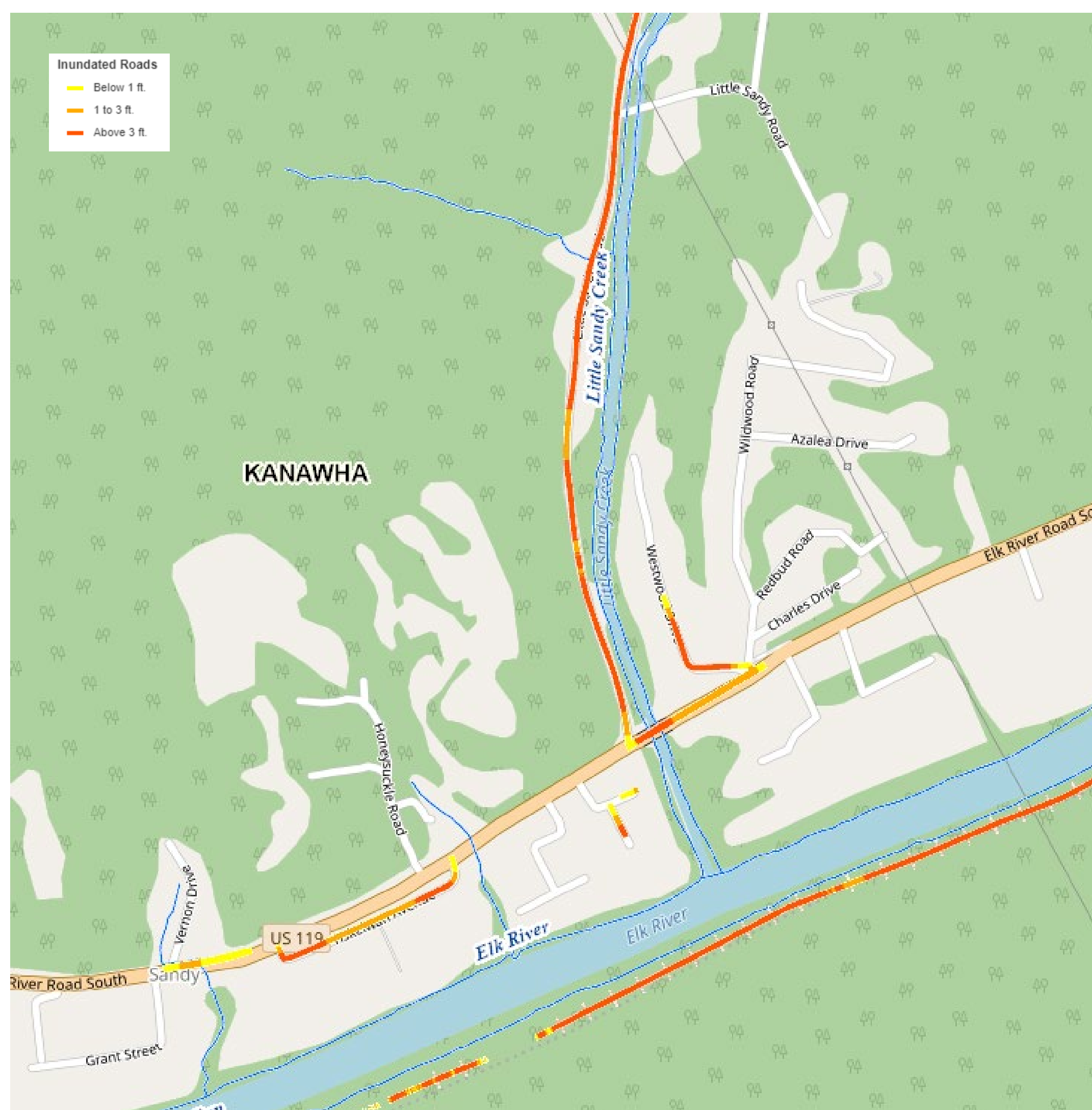
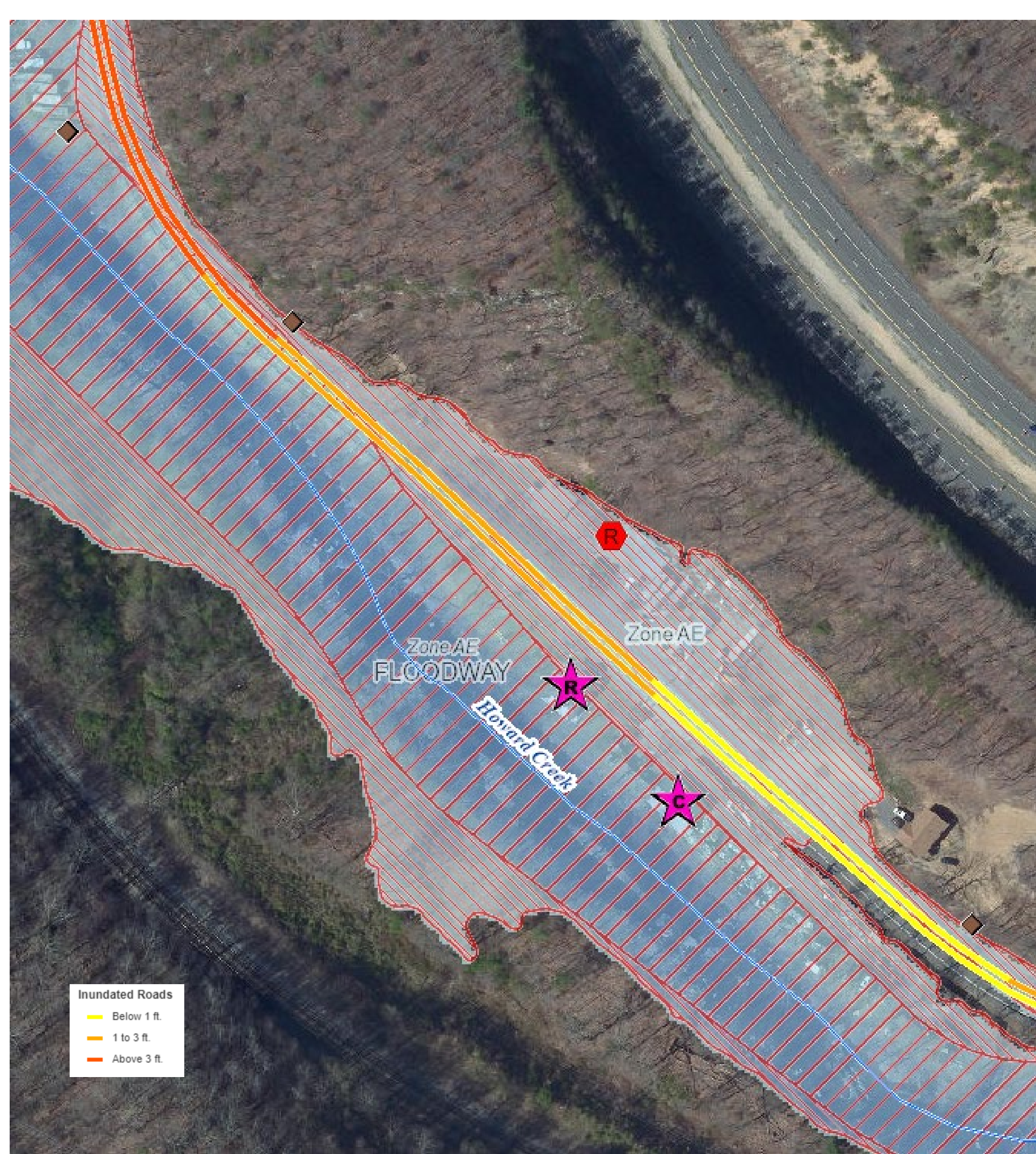


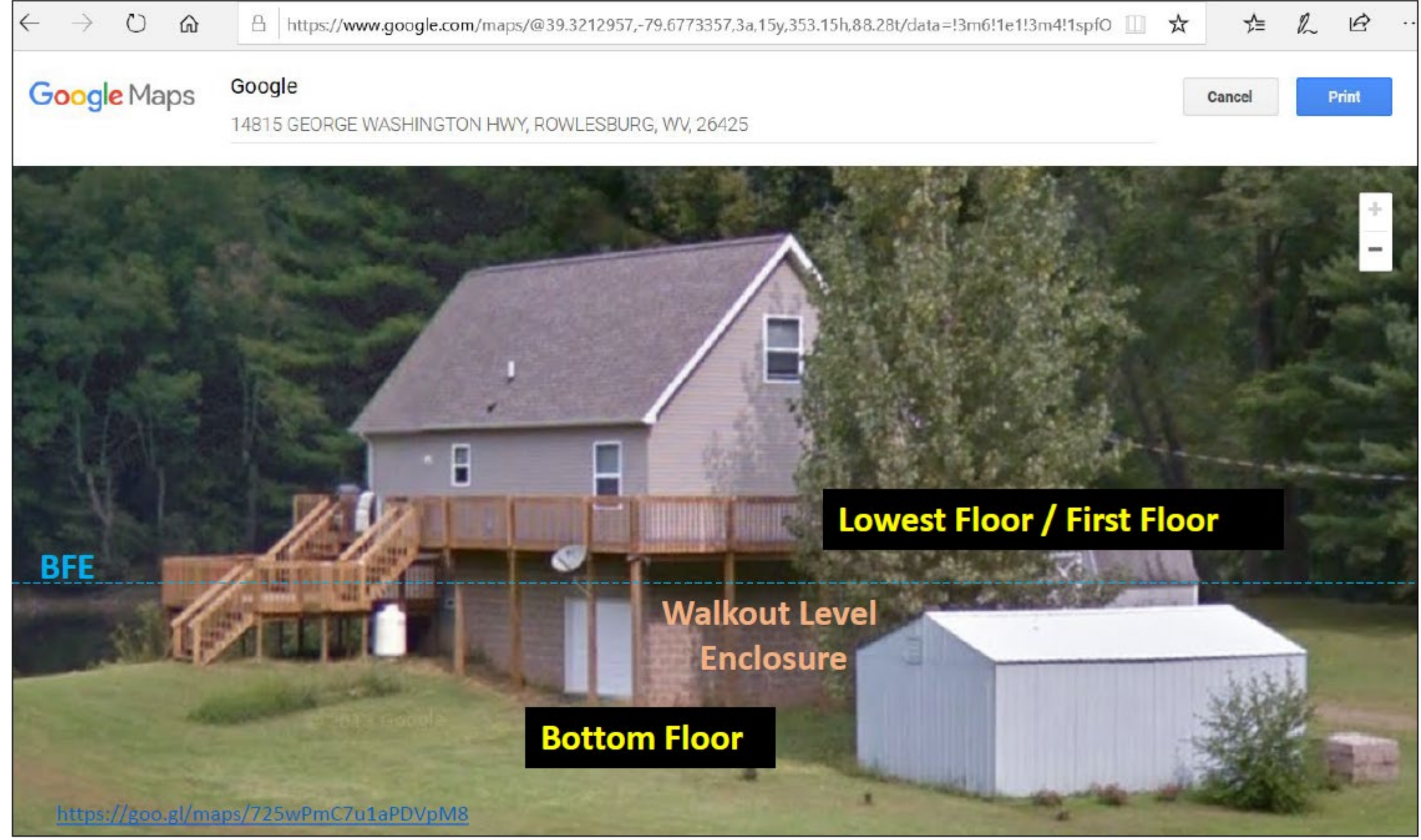






Bluestone Dam (WV08902)





Elevation Certificates are beneficial for Floodplain Management and Risk Assessments

- Future Map
- R MAPPED OUT-Residential
 - C MAPPED OUT-COMMERCIAL
 - O MAPPED OUT-Other
 - R MAPPED IN-Residential
 - C MAPPED IN-Commercial
 - O MAPPED IN-Other
 - ★ MAPPED IN FLOODWAY-Residential
 - ★ MAPPED IN FLOODWAY-Commercial
 - ★ MAPPED IN FLOODWAY-Other
 - ★ FLOOD FRINGE TO FLOODWAY-Res.
 - ★ FLOOD FRINGE TO FLOODWAY-Com.
 - ★ FLOOD FRINGE TO FLOODWAY-Other
 - ★ FLOODWAY NO CHANGE-Residential
 - ★ FLOODWAY NO CHANGE-Commercial
 - ★ FLOODWAY NO CHANGE-Other
 - NO CHANGE-Residential
 - NO CHANGE-Commercial
 - NO CHANGE-Other
- Elevated Structure
-

