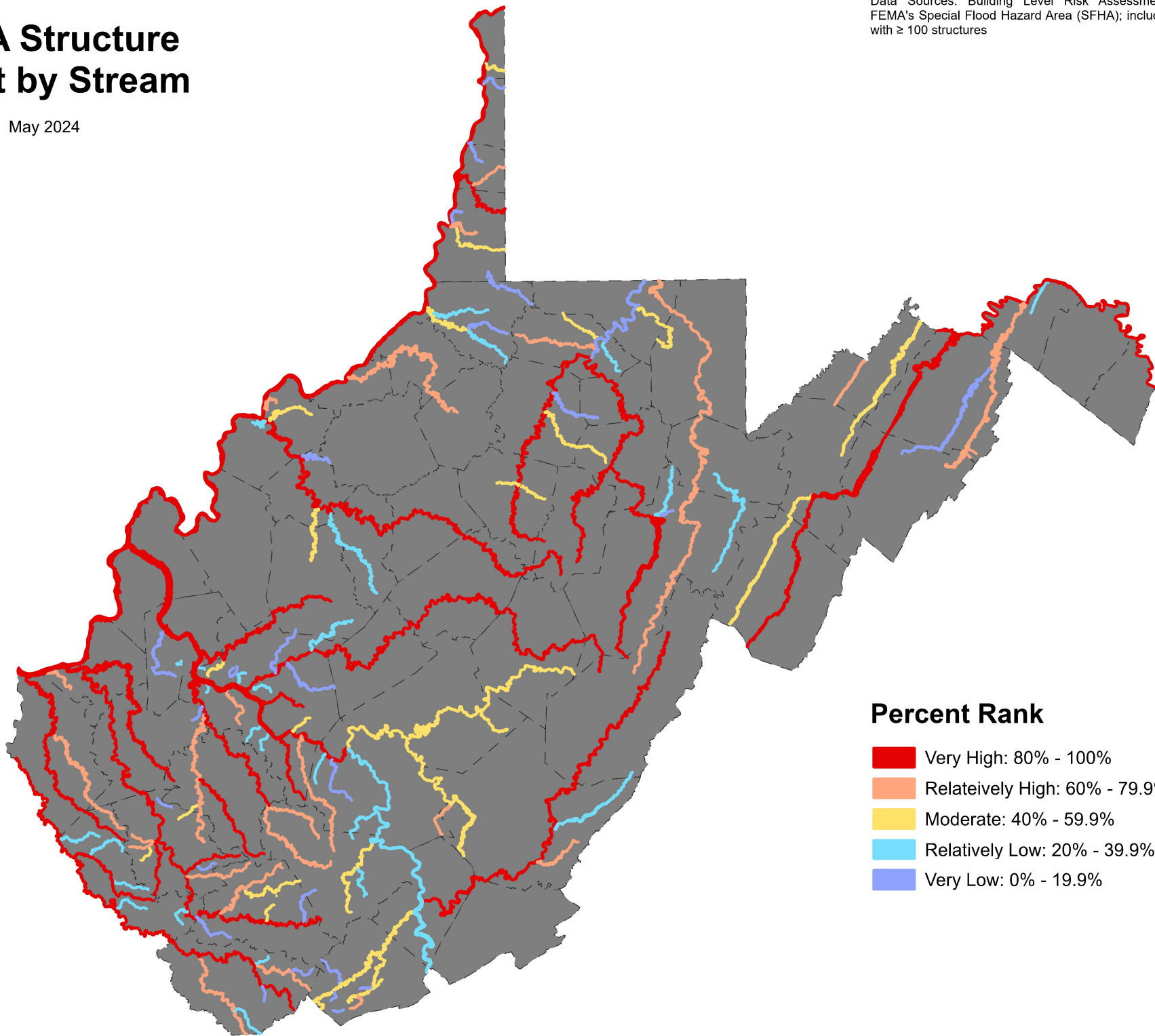


SFHA Structure Count by Stream

May 2024

Data Sources: Building Level Risk Assessment (BLRA), FEMA's Special Flood Hazard Area (SFHA); includes streams with ≥ 100 structures



Percent Rank

- Very High: 80% - 100%
- Relatively High: 60% - 79.9%
- Moderate: 40% - 59.9%
- Relatively Low: 20% - 39.9%
- Very Low: 0% - 19.9%