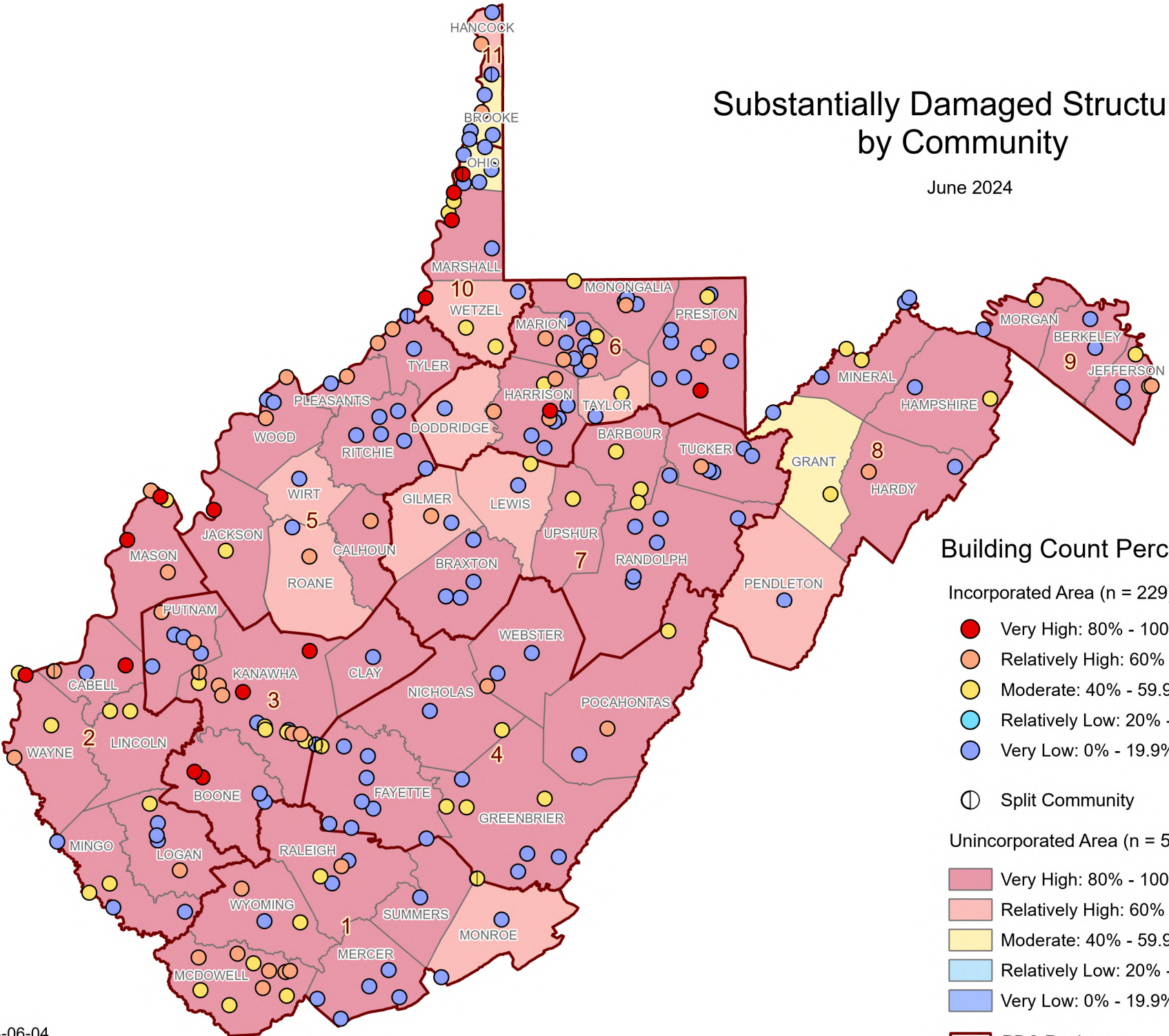


Substantially Damaged Structures by Community

June 2024



Building Count Percent Rank

Incorporated Area (n = 229)

- Very High: 80% - 100%
- Relatively High: 60% - 79.9%
- Moderate: 40% - 59.9%
- Relatively Low: 20% - 39.9%
- Very Low: 0% - 19.9%

⊕ Split Community

Unincorporated Area (n = 55)

- Very High: 80% - 100%
- Relatively High: 60% - 79.9%
- Moderate: 40% - 59.9%
- Relatively Low: 20% - 39.9%
- Very Low: 0% - 19.9%

PDC Region