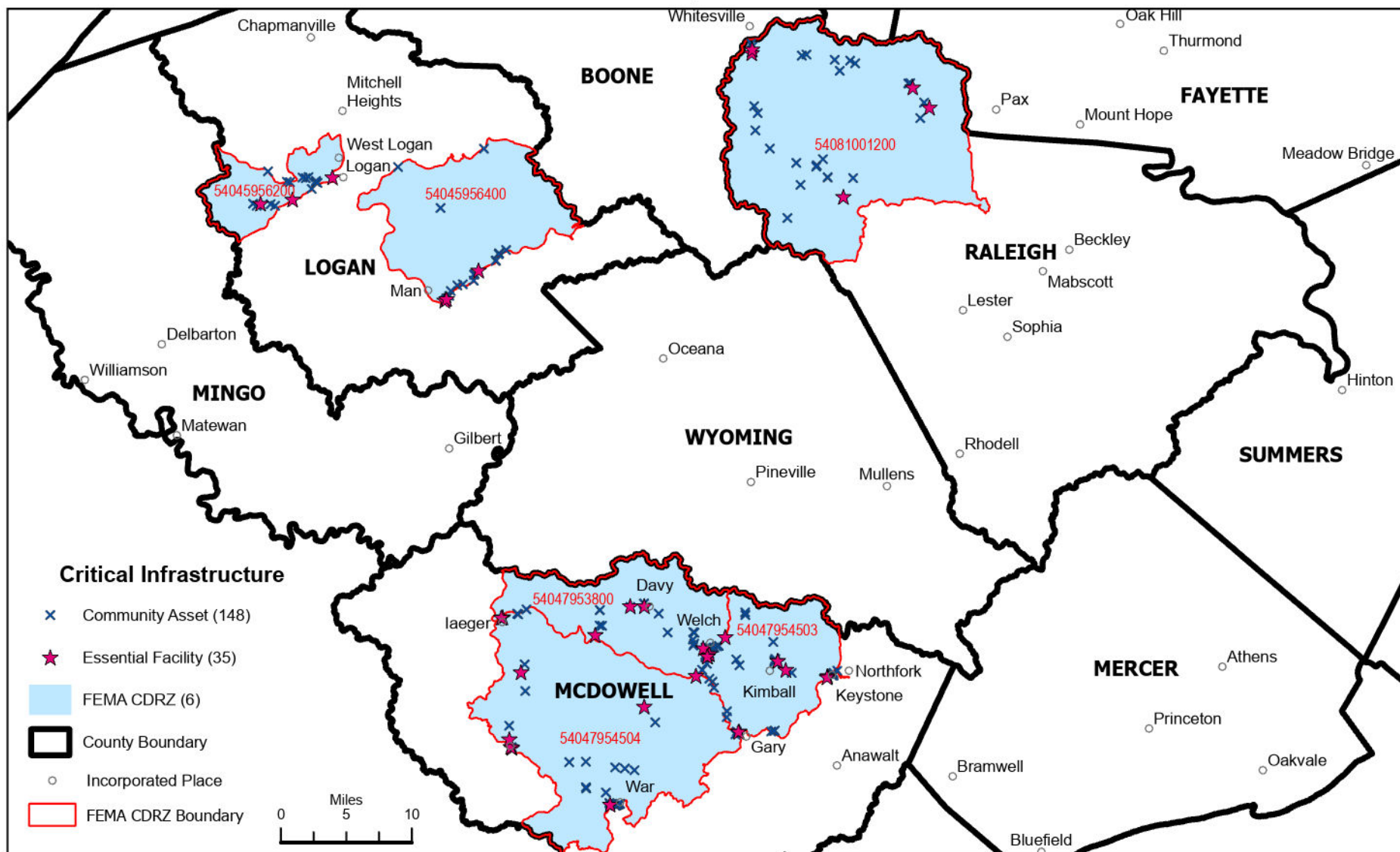


Community Disaster Resiliency Zones in West Virginia

Critical Infrastructure Within Floodplain

January 2024



Places Affected by County	
Logan	Man, City of Logan, Logan County Unincorporated
McDowell	Bradshaw, Davy, Gary, laeger, Keystone, Kimball, War, Welch, McDowell County Unincorporated
Raleigh	Raleigh County Unincorporated

Critical Infrastructure by County in CDRZ		
County	Community Assets	Essential Facilities
Logan	33	6
McDowell	89	24
Raleigh	26	5

Source: FEMA
<https://www.fema.gov/partnerships/community-disaster-resilience-zones>