

Occupancy Class	Count	Percent of Total	
Residential	RES1	3180	47.1%
	RES2	3489	51.7%
	RES3x	14	0.2%
Non-Residential Commercial	COMx	52	0.8%
	INDx	5	0.1%
Other Non-Residential	GOVx	7	0.1%
	RELx	3	0.0%
	AGRx	1	0.0%
<b>Total</b>	<b>6751</b>		

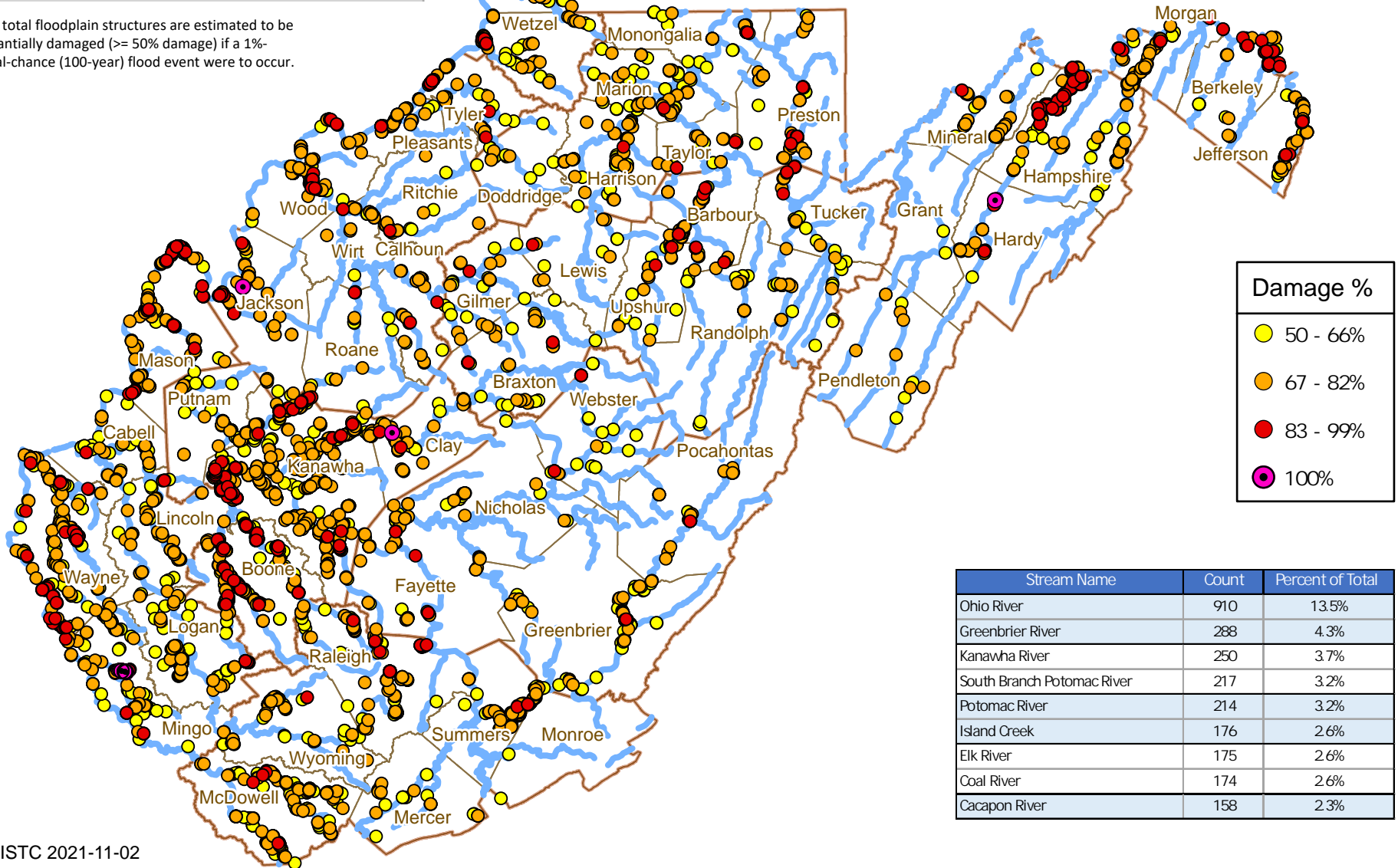
7% of total floodplain structures are estimated to be substantially damaged (>= 50% damage) if a 1%-annual-chance (100-year) flood event were to occur.

# High Substantial Damage Estimates (%)

6,751 (>= 50% damage) of 98,451 Floodplain Structures

Statewide Flood Risk Assessment - 1% Annual Chance (100-yr) Floodplain

November 2021



Damage %
50 - 66%
67 - 82%
83 - 99%
100%

Stream Name	Count	Percent of Total
Ohio River	910	13.5%
Greenbrier River	288	4.3%
Kanawha River	250	3.7%
South Branch Potomac River	217	3.2%
Potomac River	214	3.2%
Island Creek	176	2.6%
Elk River	175	2.6%
Coal River	174	2.6%
Cacapon River	158	2.3%