

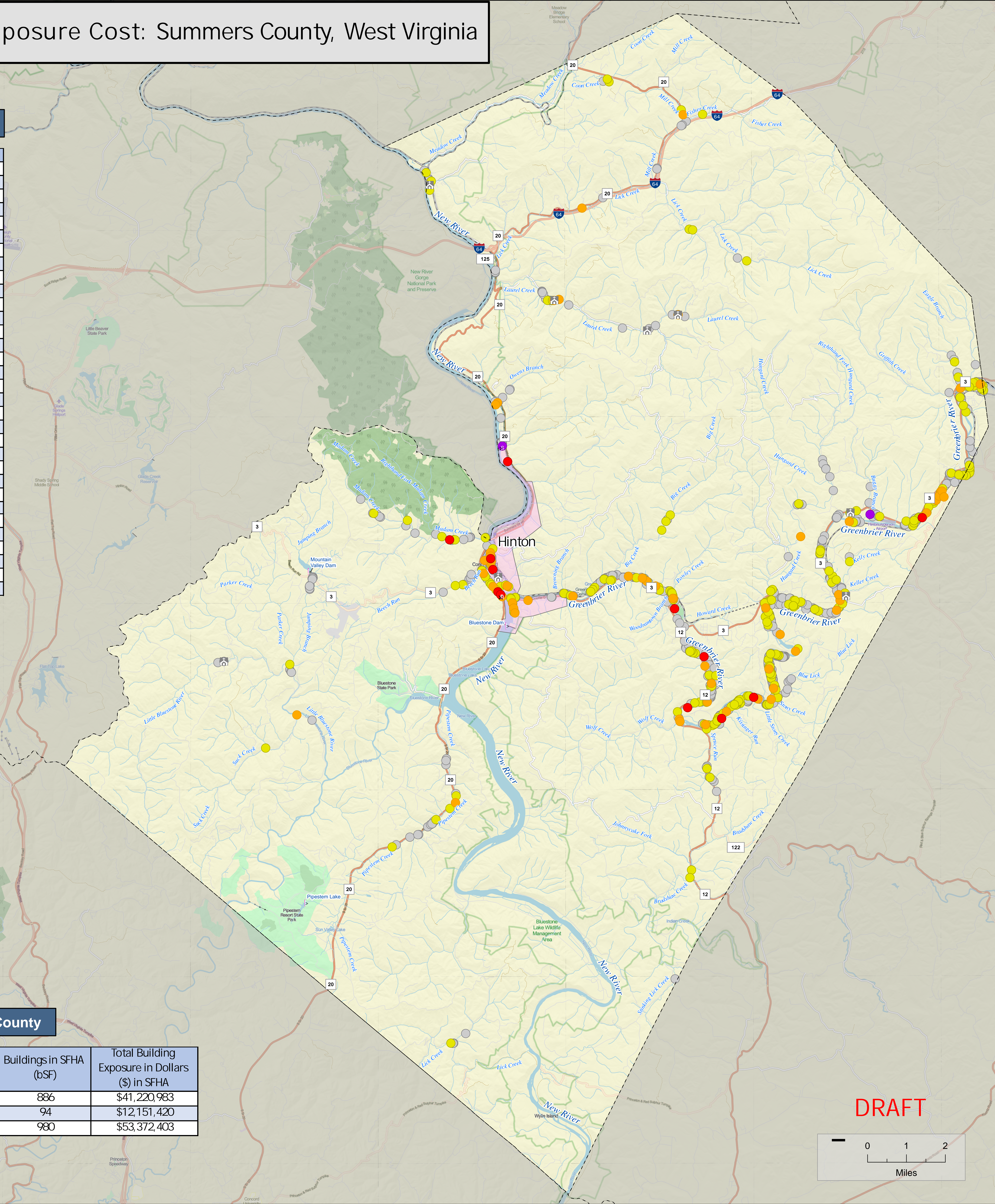
Countywide Flood Risk Exposure Cost: Summers County, West Virginia

of Impacted Structures by Stream

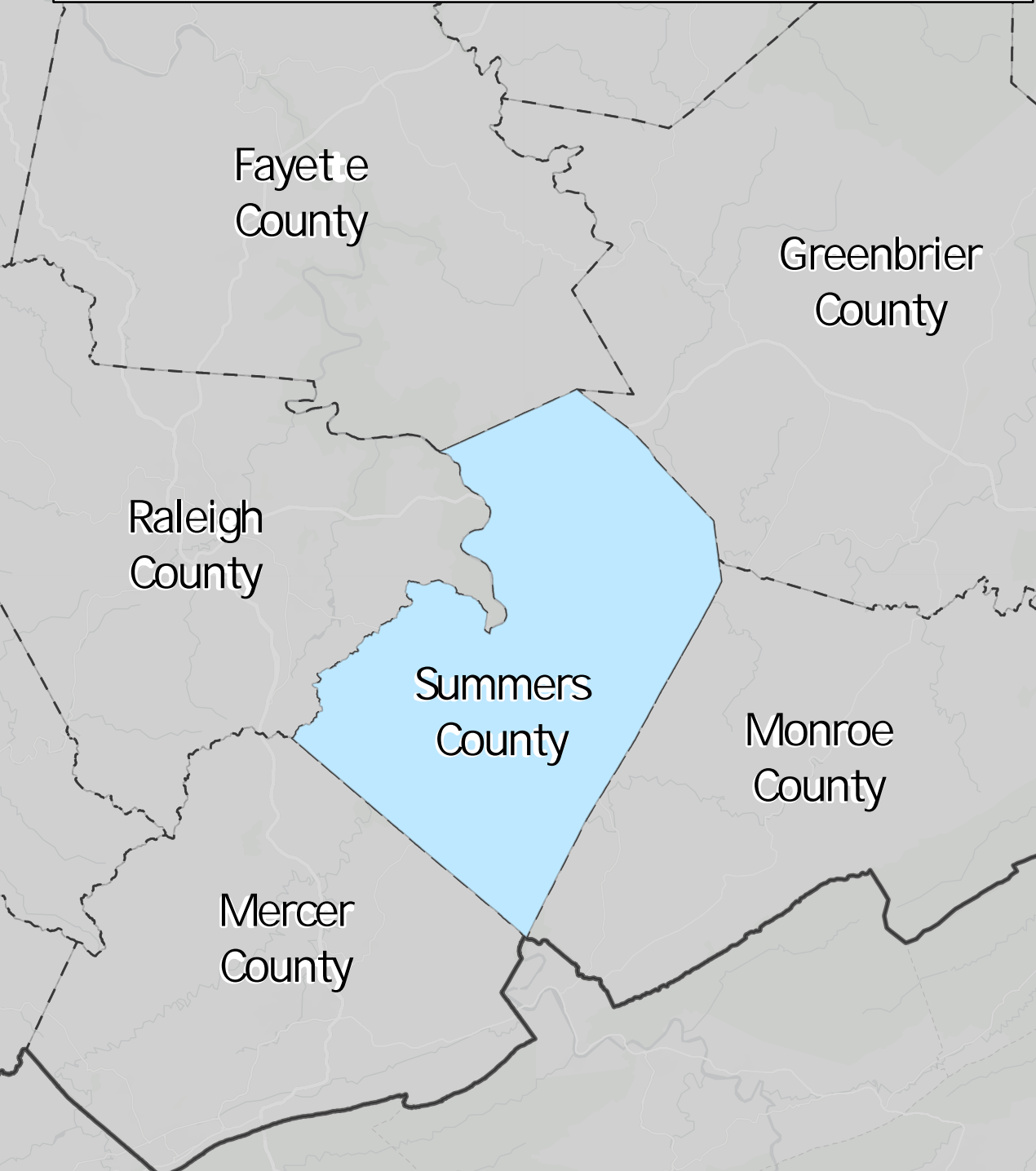
Stream Names	Building Count	Building Value
Greenbrier River	681	\$31,287,353
New River	128	\$14,733,460
Pipestem Creek	22	\$850,190
Laurel Creek	21	\$1,002,660
Madam Creek	19	\$1,073,210
Hungard Creek	14	\$616,160
Jumping Branch	10	\$145,190
Beech Run	9	\$391,600
Lick Creek	9	\$530,250
Spruce Run	9	\$371,990
Eagle Branch	7	\$193,360
Little Bluestone River	7	\$259,230
Mill Creek	6	\$363,560
Blue Lick Creek	5	\$194,060
Righthand Fork Hungard	5	\$136,240
Big Creek	4	\$212,400
Owens Branch	4	\$97,000
Coon Creek	3	\$199,200
Bradshaw Creek	2	\$142,800
Buggy Branch	2	\$65,400
Fisher Creek	2	\$126,300
Kelly Creek	2	\$75,800
Greenbrier River	1	\$9,800
Griffith Creek	1	\$7,300
Lick Creek Tributary 1	1	\$14,900
Madam Creek Tributary	1	\$24,000
Parker Creek	1	\$63,500
Striking Lick Creek	1	\$42,000
Suck Creek	1	\$65,000
Tributary 1 to New River	1	\$53,300
Woodramtown Branch	1	\$25,200
Total	980	\$53,372,403

Community Statistics for Summers County

Community	2017 Population	Buildings in SFHA (bSF)	Total Building Exposure in Dollars (\$) in SFHA
Summers County (Unincorporated)	10,497	886	\$41,220,983
Hinton	2,713	94	\$12,151,420
Total	13,210	980	\$53,372,403



STUDY LOCATOR



Flood Risk Building Exposure



At-Risk State Asset or Essential Facility

- Government Building (Verified)
- ⊠ Religious Organization
- × Government Facility
- × Hospital
- × Police Department
- × 911 Center
- × National Register
- × Nursing Home
- × Fire Department
- × School

Dams

- ⌋ High Hazard Level

Municipality

- Incorporated Area
- Repetitive Loss Area

Risk Mapping, Assessment, And Planning (Risk MAP)

Countywide Flood Risk Map (FRM)
Summers County and Incorporated Areas, WV



This Flood Risk Map has been prepared in conjunction with the Flood Risk Report and Flood Risk Database for Summers County, WV.

Refer to WV Flood Tool: <https://www.mapwv.gov/flood> Map Date: 2/11/2021

DRAFT

