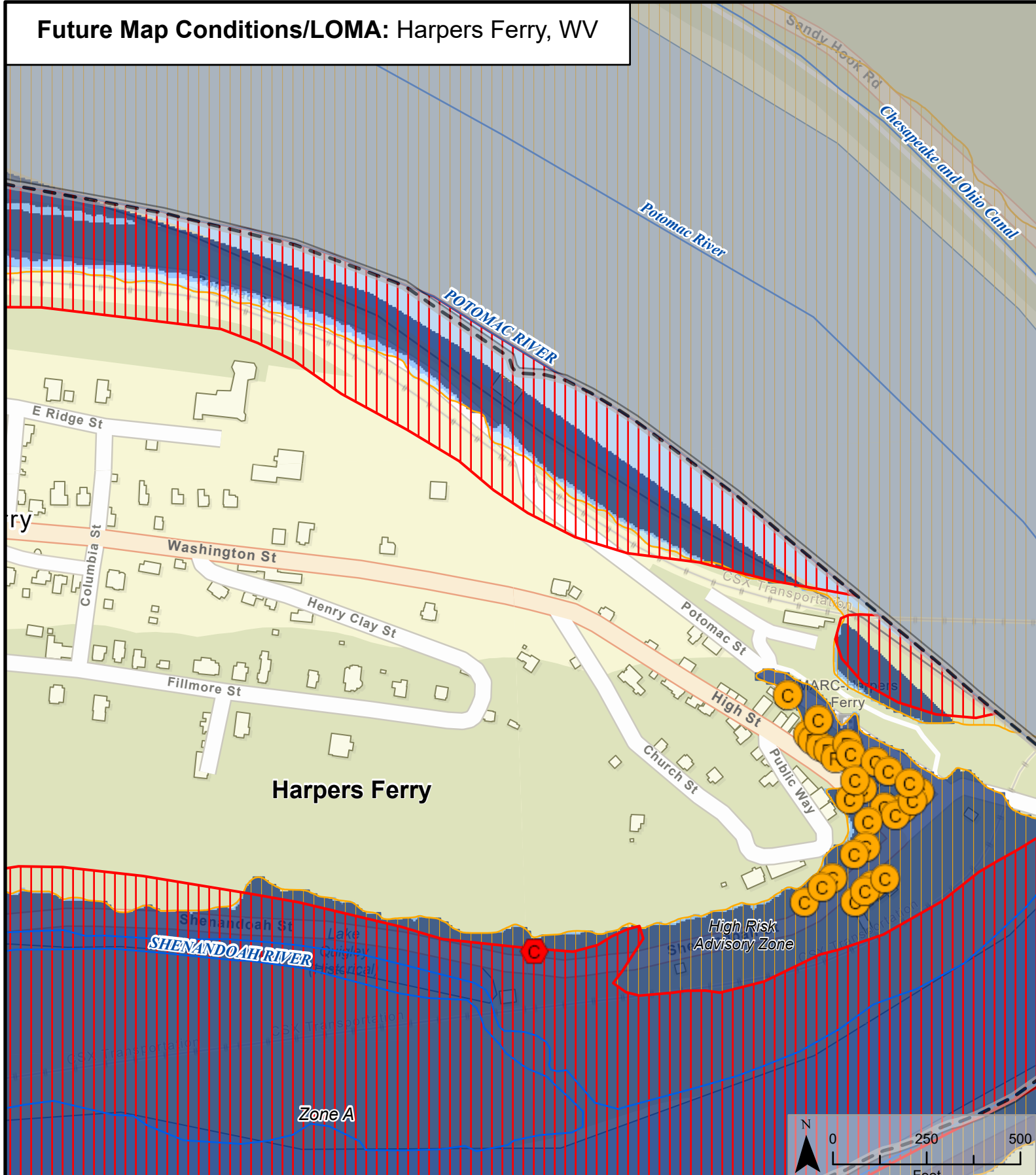


Future Map Conditions/LOMA: Harpers Ferry, WV



Future Map Condition	Land Use Category	LOMA Verified	1%-Annual-Chance Event Flood Depth	1%-Annual-Chance Event Flood Zone
Mapped Out SFHA	Residential	Non-Removal	≤ 1 Foot	Zone AE FLOODWAY
Mapped In SFHA	Commercial	Removal	1 - 4 Feet	Zone AE (AH, AO)
Remains Same	Other	Out as Shown	4+ Feet	Zone A
Remains Same Floodway				High Risk Advisory Flood Zones Updated Zone AE
At-Risk State Asset or Essential Facility				Advisory Zone A

Map Extent

Map Date 7/22/2020