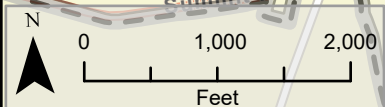
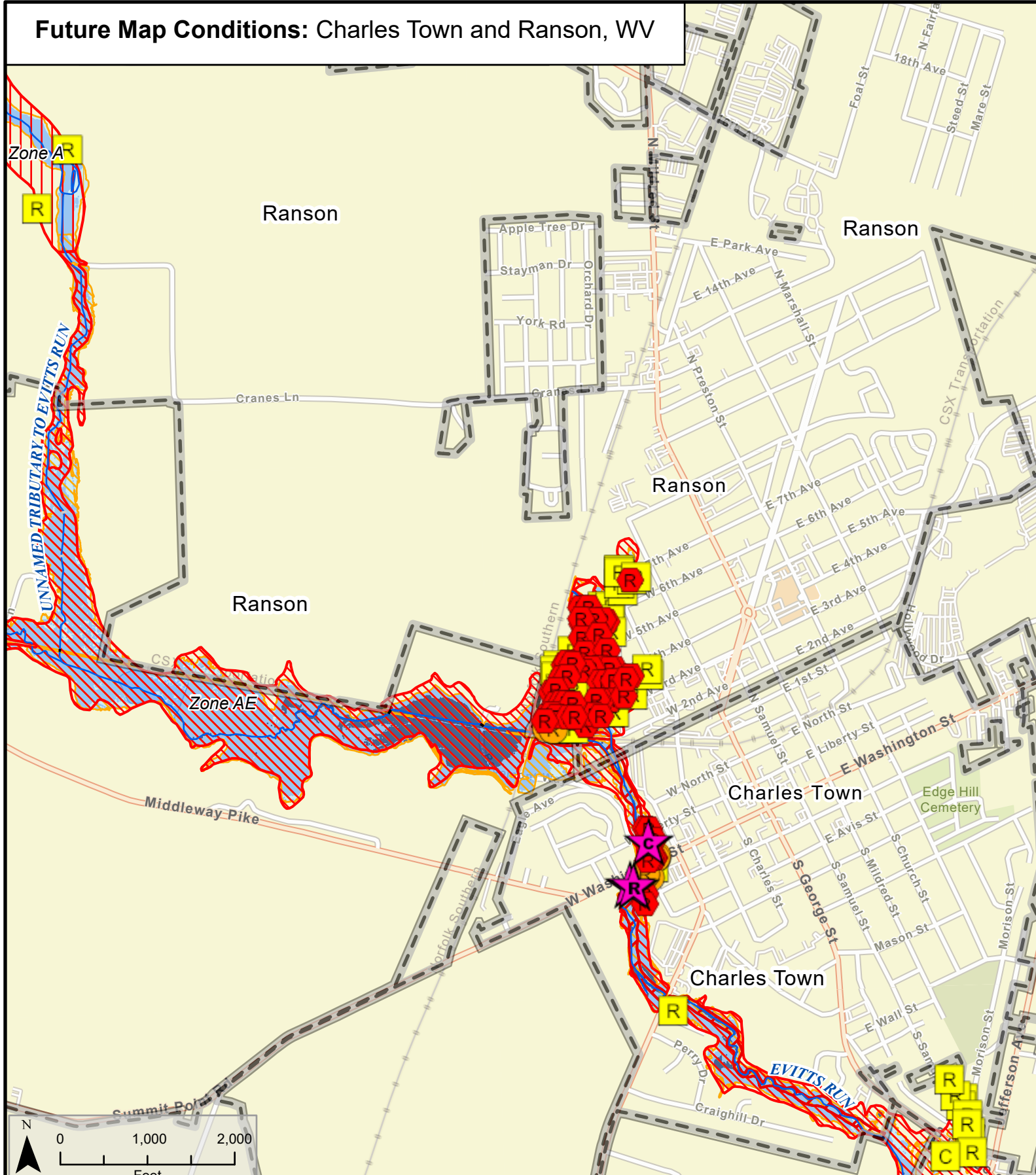


# Future Map Conditions: Charles Town and Ranson, WV



<b>Future Map Condition</b> <ul style="list-style-type: none"> <li>Yellow square: Mapped Out SFHA</li> <li>Yellow circle: Mapped In SFHA</li> <li>Red hexagon: Remains Same</li> <li>Purple star: Remains Same Floodway</li> </ul>	<b>Land Use Category</b> <ul style="list-style-type: none"> <li>(R) Residential</li> <li>(C) Commercial</li> <li>(O) Other</li> </ul>	<ul style="list-style-type: none"> <li>Dashed line: Buried Stream/River</li> <li>Blue line: Stream/River</li> <li>Grey outline: Political Boundary</li> <li>Black circle: At-Risk State Asset or Essential Facility</li> </ul>	<b>1%-Annual-Chance Event Flood Depth</b> <ul style="list-style-type: none"> <li>Light blue: ≤ 1 Foot</li> <li>Medium blue: 1 - 4 Feet</li> <li>Dark blue: 4+ Feet</li> </ul>	<b>1%-Annual-Chance Event Flood Zone</b> <b>FEMA Effective Flood Zones</b> <ul style="list-style-type: none"> <li>Red diagonal lines: Zone AE FLOODWAY</li> <li>Red horizontal lines: Zone AE (AH, AO)</li> <li>Red vertical lines: Zone A</li> </ul>	<b>High Risk Advisory Flood Zones</b> <ul style="list-style-type: none"> <li>Yellow diagonal lines: Updated Zone AE</li> <li>Yellow horizontal lines: Advisory Zone A</li> </ul>	<p>Berkeley County, Maryland, Virginia, Jefferson County</p> <p>Map Date: 7/22/2020</p>
---	--	--	--	---	---	---