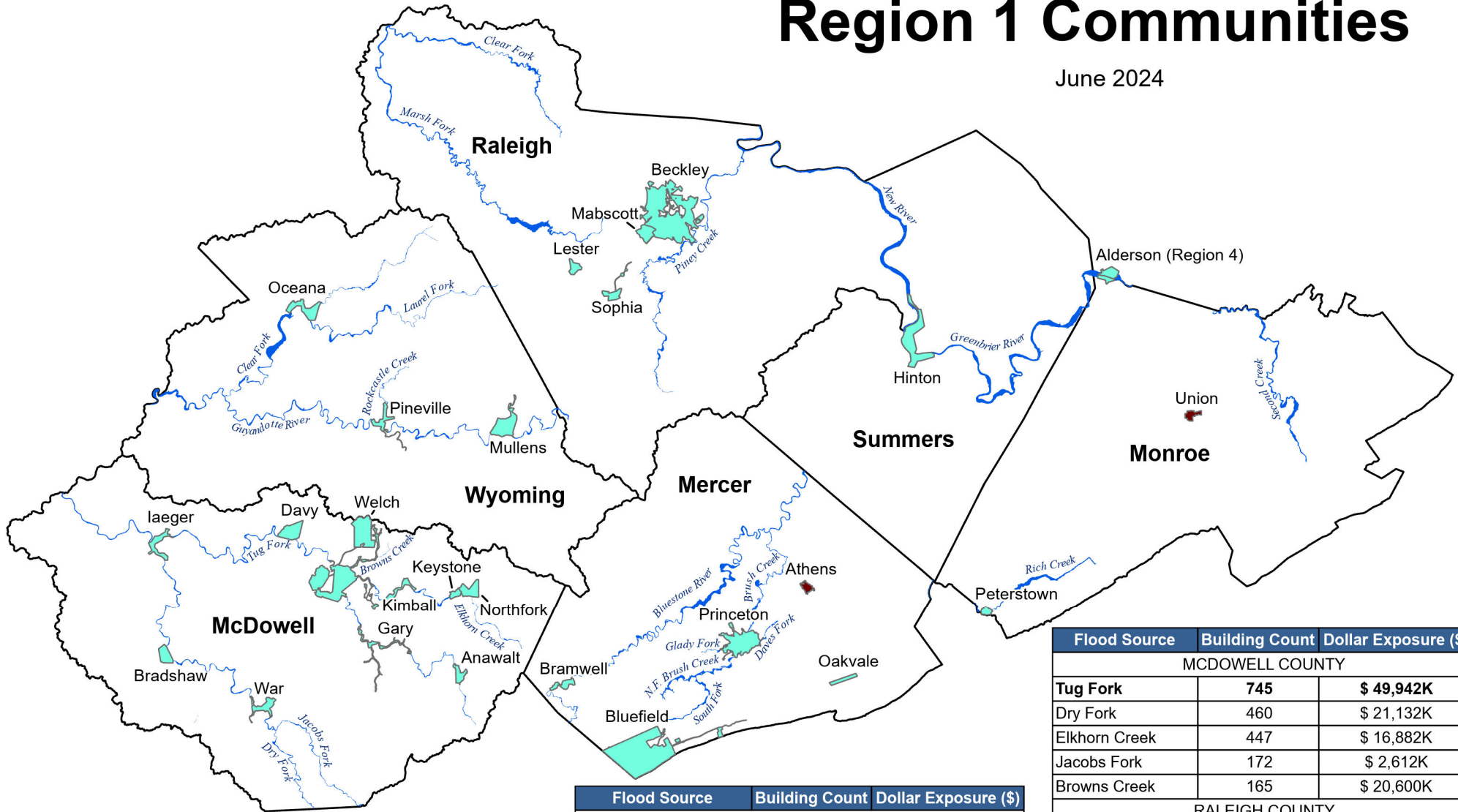




Region 1 Communities

June 2024



 Participating in National Flood Insurance Program (NFIP)

 Not Participating in NFIP or no Special Flood Hazard Area (SFHA)

Flood Source	Building Count	Dollar Exposure (\$)
MERCER COUNTY		
South Fork	272	\$ 17,695K
Bluestone River	253	\$ 16,013K
Brush Creek	249	\$ 63,814K
North Fork Brush Creek	212	\$ 18,428K
Daves Fork	187	\$ 12,747K
Glady Fork	109	\$ 25,765K
MONROE COUNTY		
Second Creek	52	\$ 2,713K
Greenbrier River	51	\$ 2,844K
Rich Creek	44	\$ 14,382K

Flood Source	Building Count	Dollar Exposure (\$)
MCDOWELL COUNTY		
Tug Fork	745	\$ 49,942K
Dry Fork	460	\$ 21,132K
Elkhorn Creek	447	\$ 16,882K
Jacobs Fork	172	\$ 2,612K
Browns Creek	165	\$ 20,600K
RALEIGH COUNTY		
Marsh Fork	360	\$ 15,808K
Clear Fork	328	\$ 11,784K
Piney Creek	177	\$ 21,508K
SUMMERS COUNTY		
Greenbrier River*	634	\$ 31,206K
New River*	70	\$ 5,900K
WYOMING COUNTY		
Guyandotte River	469	\$ 19,689K
Clear Fork	447	\$ 25,923K
Rockcastle Creek	180	\$ 7,044K
Laurel Fork	179	\$ 10,009K

* 2016 Disaster Restudy