

# Building Resilient Infrastructure and Communities (BRIC) and Community Lifelines

July 22, 2020



Photo of Memphis, Tennessee



FEMA





Photo of Miami, Florida

# Agenda

- **Welcome:**  
Kayed Lakhia, FEMA
- **Defining Community Lifelines:**  
Ben Cabana, FEMA
- **Where Lifelines Fit into BRIC:**  
Camille Crain, FEMA

# Kayed Lakhia

Director, Hazard Mitigation Division,  
FEMA







# Defining Community Lifelines

---

Ben Cabana, FEMA

**FB**  
FARM BUREAU  
FINANCIAL SERVICES  
CORY A. ALBIN  
(406) 426-5088

BULLY BEAN  
BALKAN LABRI  
& RESTAURANT

BUILDING

TEA

206 208A

CHEVROLET

# Incorporating Community Lifelines into Response

FEMA developed the community lifelines construct to increase effectiveness in disaster operations and better position the Agency to respond to catastrophic incidents. The construct allows emergency managers to:

- Characterize the incident and identify the root causes of priority issue areas
- Distinguish the highest priorities and most complex issues from other incident information

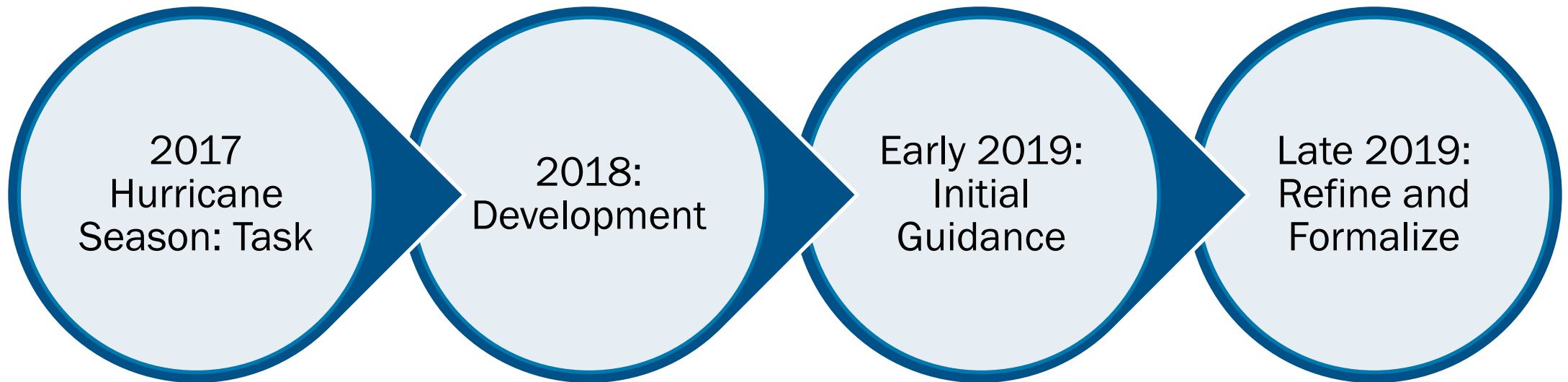
## WHY A LIFELINES CONSTRUCT?

Lifelines provide an outcome-based, survivor-centric frame of reference that assists responders with the following:

- Rapidly determining the scale and complexity of a disaster
- Identifying the severity, root causes, and interdependencies of impacts to basic, critical lifesaving and life-sustaining services within impacted areas
- Developing operational priorities and objectives that focus response efforts on the delivery of these services by the most effective means available
- Communicating disaster-related information across all levels of public, private, and non-profit sectors using a commonly understood, plain language lexicon
- Guiding response operations to support and facilitate integration across mission areas

# Evolution of the Community Lifelines Construct

Developed and refined over the past two years, gaining significant momentum in the emergency management community



- After Action Report identified need to create a new operational prioritization and response tool

- Initial concept development
- First implemented for Hurricanes Florence, Michael, Pacific Typhoons

- Toolkit 1.0 released in February
- Validation in Shaken Fury, Interagency and FEMA-wide comments

- *National Response Framework 4<sup>th</sup>* edition introduces lifelines in national policy
- Toolkit 2.0 and Incident Stabilization Guide released

# Toolkit 2.0

The 4<sup>th</sup> Edition of the *National Response Framework* formalizes the lifelines construct in national level response doctrine

- Toolkit Version 2.0 reflects refinements and improvements to the lifelines construct based on stakeholder feedback and lessons learned from incidents and exercises
- Major changes:
  - Refined components and subcomponents
  - Developed stabilization target examples
  - Revised and expanded planning content, consistent with Regional All-Hazards Plan revisions

FEMA National Response Framework, 4<sup>th</sup> Edition:  
<https://www.fema.gov/media-library/assets/documents/117791>

FEMA Community Lifelines Implementation Toolkit:  
<https://www.fema.gov/media-library/assets/documents/177222>

# Community Lifelines Defined

A lifeline enables the continuous operation of critical government and business functions and is essential to human health and safety or economic security

- The most fundamental services in the community that, when stabilized, enable all other aspects of society to function
- The integrated network of assets, services, and capabilities that are used day-to-day to support the recurring needs of the community
- When disrupted, decisive intervention (e.g., rapid service re-establishment or employment of contingency response solutions) is required to stabilize the incident





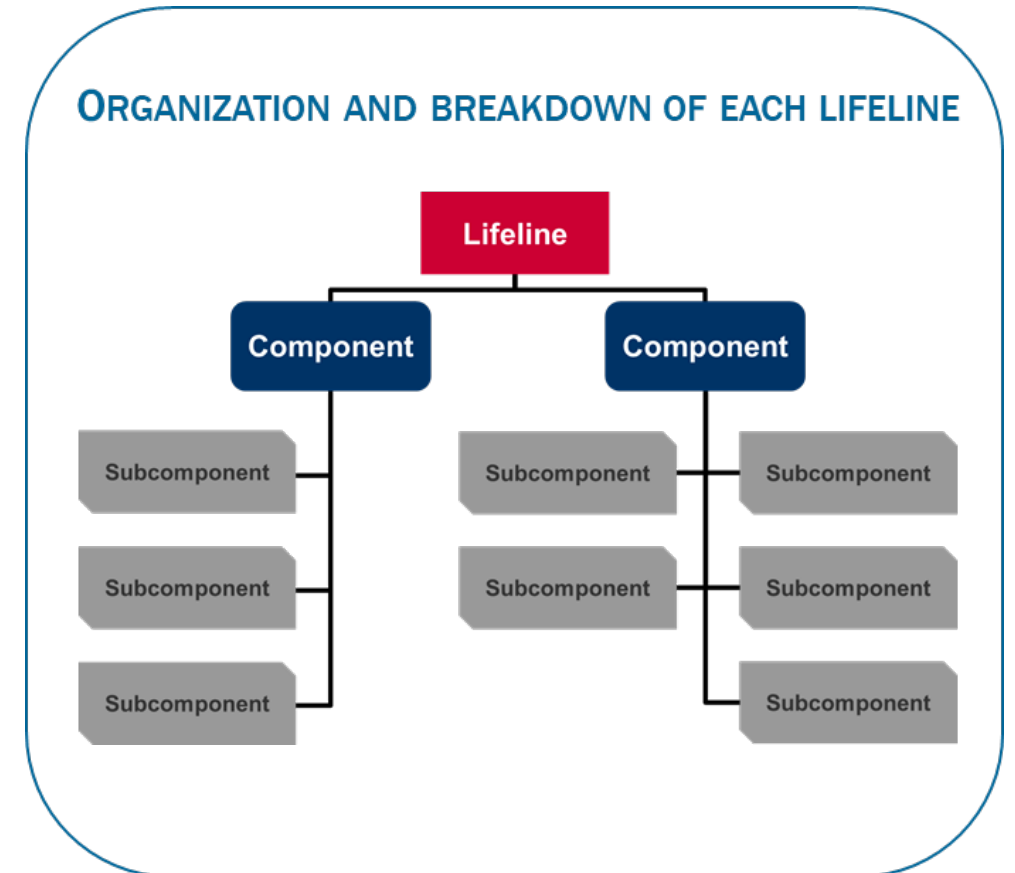
# Lifelines, Core Capabilities, ESFs

The interrelationship of Emergency Support Functions (ESF), Core Capabilities, and lifelines can be thought of in terms of means, ways, and ends

- **Means:** ESFs and other organizing bodies—the means—are the way we organize across departments and agencies, community organizations, and industries to enhance coordination and integration to deliver the Response Core Capabilities.
- **Ways:** Response Core Capabilities describe the grouping of response actions—the ways—that can be taken to stabilize and re-establish the lifelines. FEMA executes Lines of Effort (LOE) to operationalize the Core Capabilities (the ways) for response and recovery planning and operations.
- **Ends:** Lifelines describe the critical services within a community that must be stabilized or re-established—the ends—to alleviate threats to life and property.

# Deconstructing Community Lifelines

- Multiple components and subcomponents help define the services for that lifeline
  - Components – the general scope of services for a lifeline
  - Subcomponents – enabling functions for the delivery of services to a community



# Community Lifeline Components

Multiple components and subcomponents establish the parameters of the lifeline





# FEMA's Implementation of Community Lifelines

FEMA incorporates community lifelines into its planning and reporting products

## Planning products include:

- All Hazards Plans
- Information Analysis Brief
- Incident Action Plan
- Incident Approach
- National/Regional Support Plan

## Reporting products include:

- Senior Leadership Brief / SitReps
- Daily Operations Brief
- SPOT Reports

# Evolution of the Community Lifelines Concept

While Toolkit 2.0 still focuses on the Response Mission Area, FEMA continues to examine the application of community lifelines across the disaster lifecycle and all five mission areas

Driving Lifeline Resilience through:

- **Preparedness:** Reorganizing threat & hazard identification and risk assessments by lifeline
- **Protection:** Assessing lifeline infrastructure vulnerability
- **Recovery:** Transitioning stable lifelines to recovery outcomes
- **Mitigation:** Reducing lifeline vulnerability through mitigation activities

*The Lifelines Toolkit will continue to be refined as the construct evolves*

# Community Lifelines and Mitigation

- Lifelines were built by Response to highlight the priority area of focus for initial incident stabilization
- However, lifelines exist steady-state, and enable all other aspects of society
- How can lifelines be used to prioritize mitigation investments?
  - Reduce likelihood that lifelines will fail as a result of an incident
  - Understand risk to and vulnerability of lifelines

*Resilient lifelines can help build resilient communities!*





An aerial photograph of a coastal town, likely in New England, featuring a harbor filled with numerous sailboats. The town is built on a hillside, with a prominent white church steeple visible on the right side. The entire image is overlaid with a semi-transparent blue filter.

# Where Lifelines Fit into BRIC

---

Camille Crain, FEMA

# BRIC and Community Lifelines

The goals and objectives of FEMA's Strategic Plan promote using mitigation to reduce risk to lifelines before a disaster and to quickly stabilize a community after disaster by preventing cascading impacts

**BRIC mitigation grants can go toward projects which mitigate these structures, facilities, and systems**

**Lifeline-focused mitigation projects** could involve a wide variety of public, private, and non-profit organizations





# Hazard Mitigation Assistance for Community Lifelines



Food, Water,  
Sheltering

**Funded**

\$5,695,957,175



Energy

**Funded**

\$1,509,480,137



Health and  
Medical

**Funded**

\$810,653,585

National summary of  
funding to date through  
July 16, 2020



Safety and  
Security

**Funded**

\$3,484,357,306



Transportation

**Funded**

\$1,147,613,095



Communications

**Funded**

\$203,547,640



Hazardous  
Material

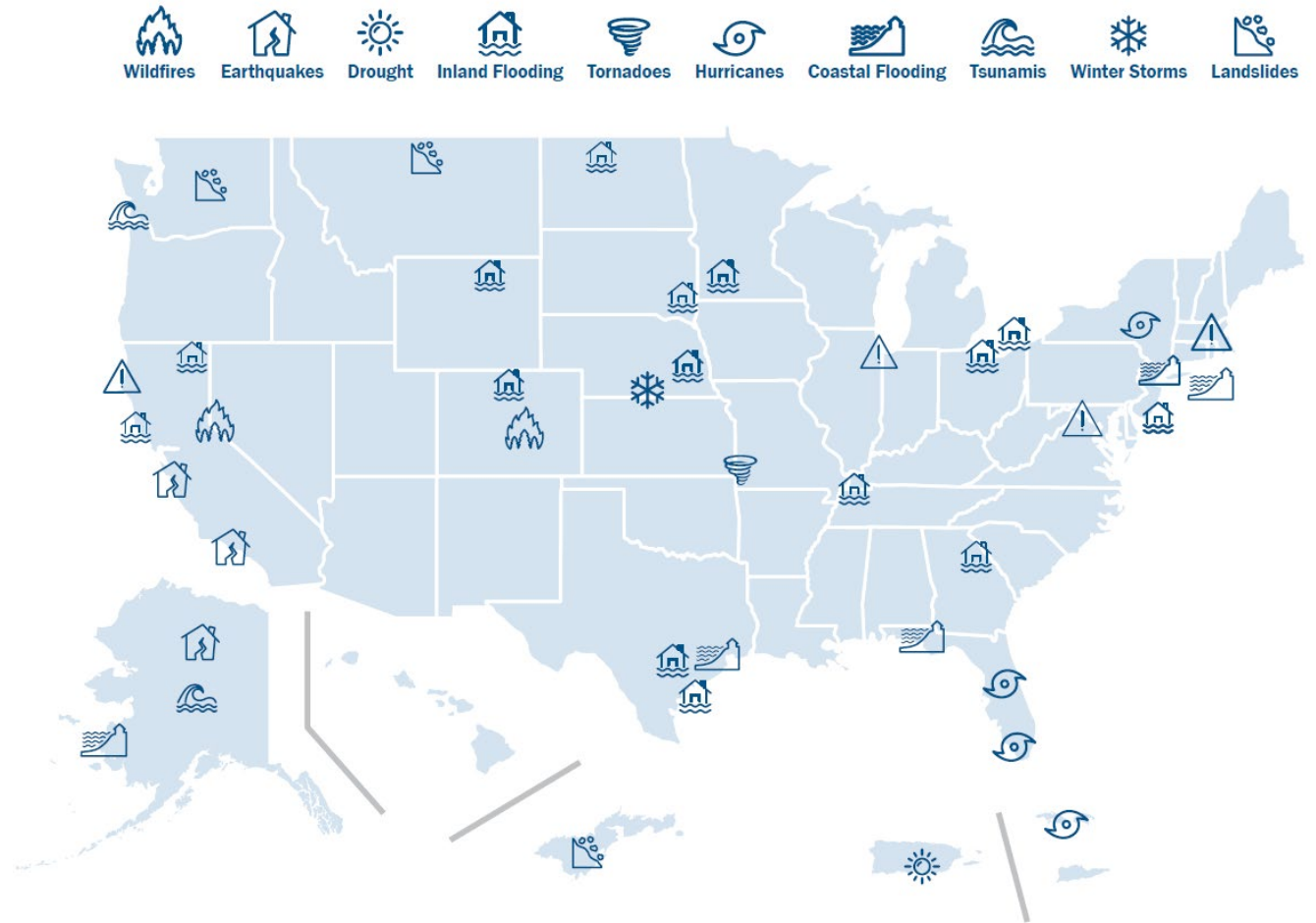
**Funded**

\$349,737,307



# Mitigation Action Portfolio

- Showcases innovative hazard mitigation projects
- Addresses variety of hazard types
- Highlights mitigation projects for different types of community lifelines





# Example Project: Safety and Security

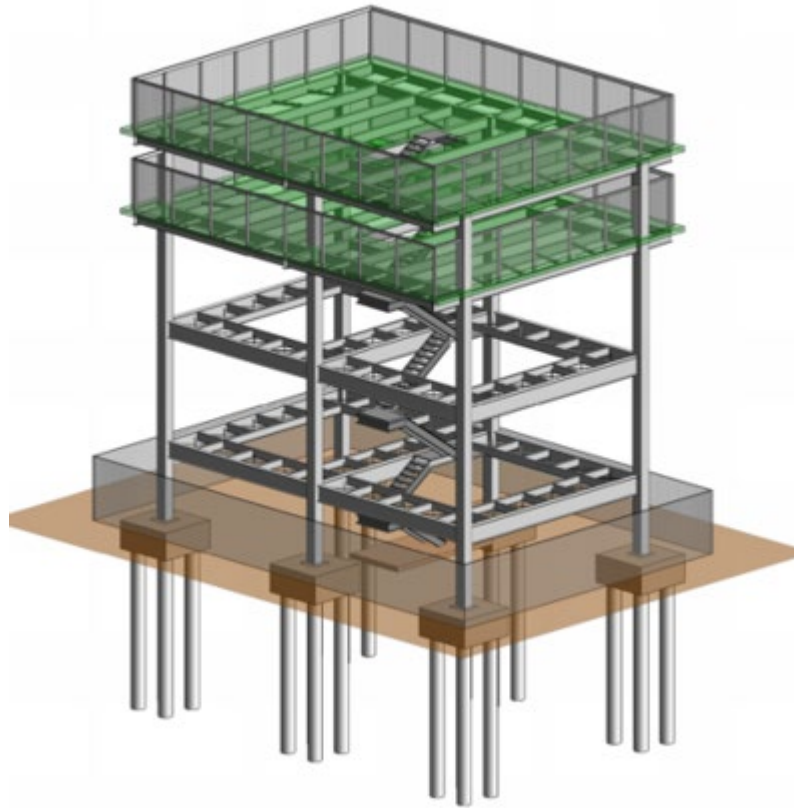


Exploration Green Stormwater Park, Houston, TX

## Stormwater Management Project Exploration Green Stormwater Park, Houston, TX



# Example Project: Food, Water, and Shelter



## Tsunami Evacuation

Shoalwater Bay Tribe Tsunami  
Evacuation Structure, Tokeland, WA

Proposed view of the Shoalwater Bay Indian Tribe vertical  
tsunami evacuation shelter





# Example Project: Health and Medical



Nicklaus Children's Hospital, Miami, FL



## Hurricane Retrofits for Critical Infrastructure

Nicklaus Children's Hospital,  
Miami, FL



# Example Project: Energy

## Microgrid Installation

Blue Lake Rancheria Tribe  
Microgrid, Humboldt Co., CA



Blue Lake Rancheria Tribe Microgrid, Humboldt Bay, CA



**CALIFORNIA**  
ENERGY COMMISSION



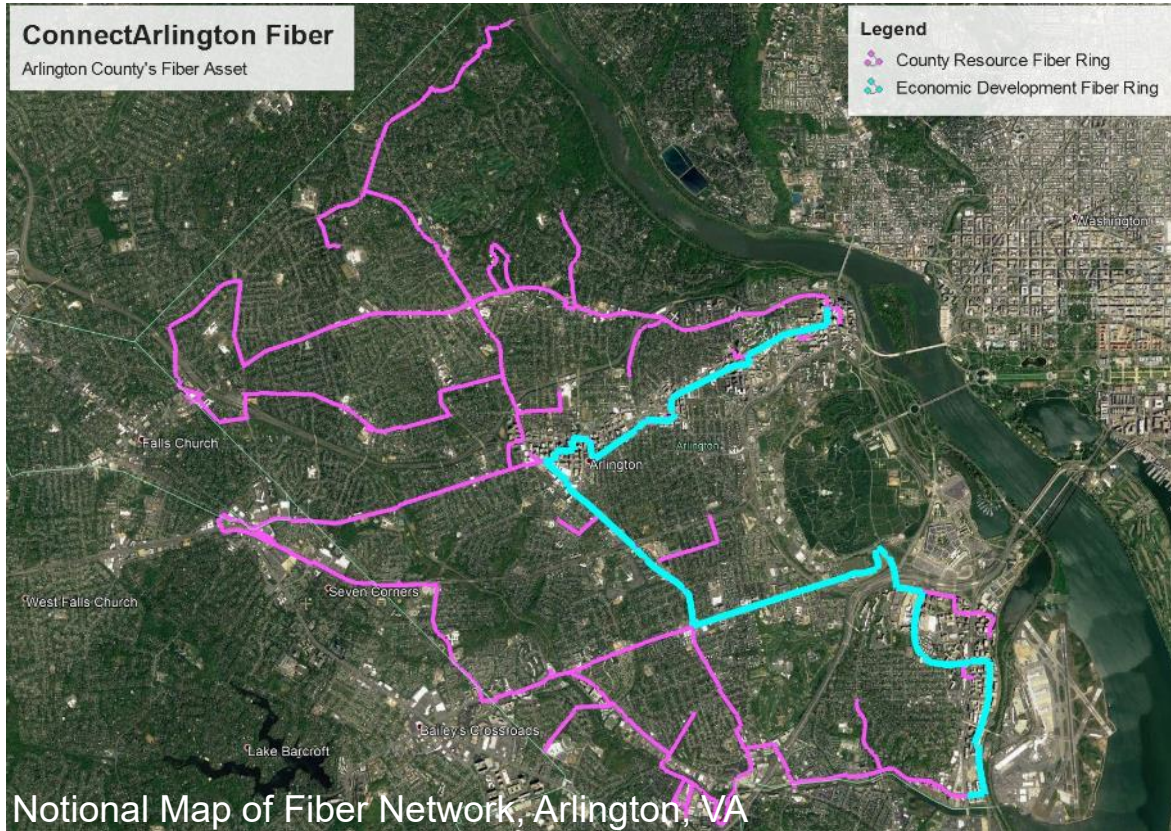
**SIEMENS**







# Example Project: Communications



## Communication Infrastructure Upgrades

ConnectArlington, Arlington County,  
VA



# Example Project: Transportation



Landslide mitigation retention wall in WA

## Landslide Mitigation Projects

Washington State Department of  
Transportation (DOT)



**Washington State  
Department of Transportation**





# Example Project: Hazardous Materials



## Statewide Resilience Projects

NY Rising Community  
Reconstruction Program

<https://stormrecovery.ny.gov/community-reconstruction-program>



# BRIC Stakeholder Engagement Sessions

- BRIC Engagement Sessions – all about the BRIC program (July 2020)

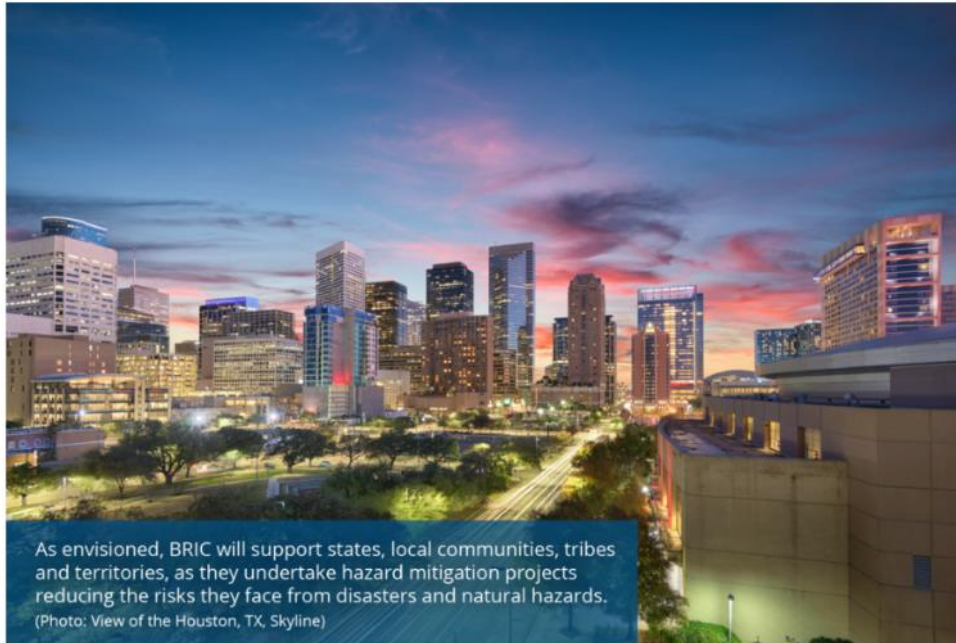
Recordings available at:

[https://www.youtube.com/playlist?list=PL720Kw\\_0oJlKKwDJQpkCLJ-6v4I\\_ndNEJ](https://www.youtube.com/playlist?list=PL720Kw_0oJlKKwDJQpkCLJ-6v4I_ndNEJ)

- July 1: Introduction to BRIC
  - July 8: Meaning of the BRIC Name
  - July 15: BRIC and Building Codes
  - July 22: BRIC and Community Lifelines
  - July 29: BRIC and Nature-based Solutions
- BRIC NOFO Webinars – will occur after NOFO is released (August - September 2020)

# FEMA Resources

## Building Resilient Infrastructure and Communities



This page provides general information about a new pre-disaster hazard mitigation program.

<https://www.fema.gov/bric>

**Sign up for BRIC and HMA Updates:**  
<https://www.fema.gov/hazard-mitigation-assistance>

### Other Resources:

- Community Lifelines Implementation Toolkit:  
<https://www.fema.gov/media-library/assets/documents/177222>
- Benefit Cost Analysis (BCA):  
[www.fema.gov/benefit-cost-analysis](http://www.fema.gov/benefit-cost-analysis)
- Hazard Mitigation Planning:  
<https://www.fema.gov/hazard-mitigation-planning>
- ISO Mitigation – Building Codes  
<https://www.isomitigation.com/bcegs/>







Thank you!

[fema.gov/bric](https://fema.gov/bric)