

Legend

USACE Districts

Owner Type:

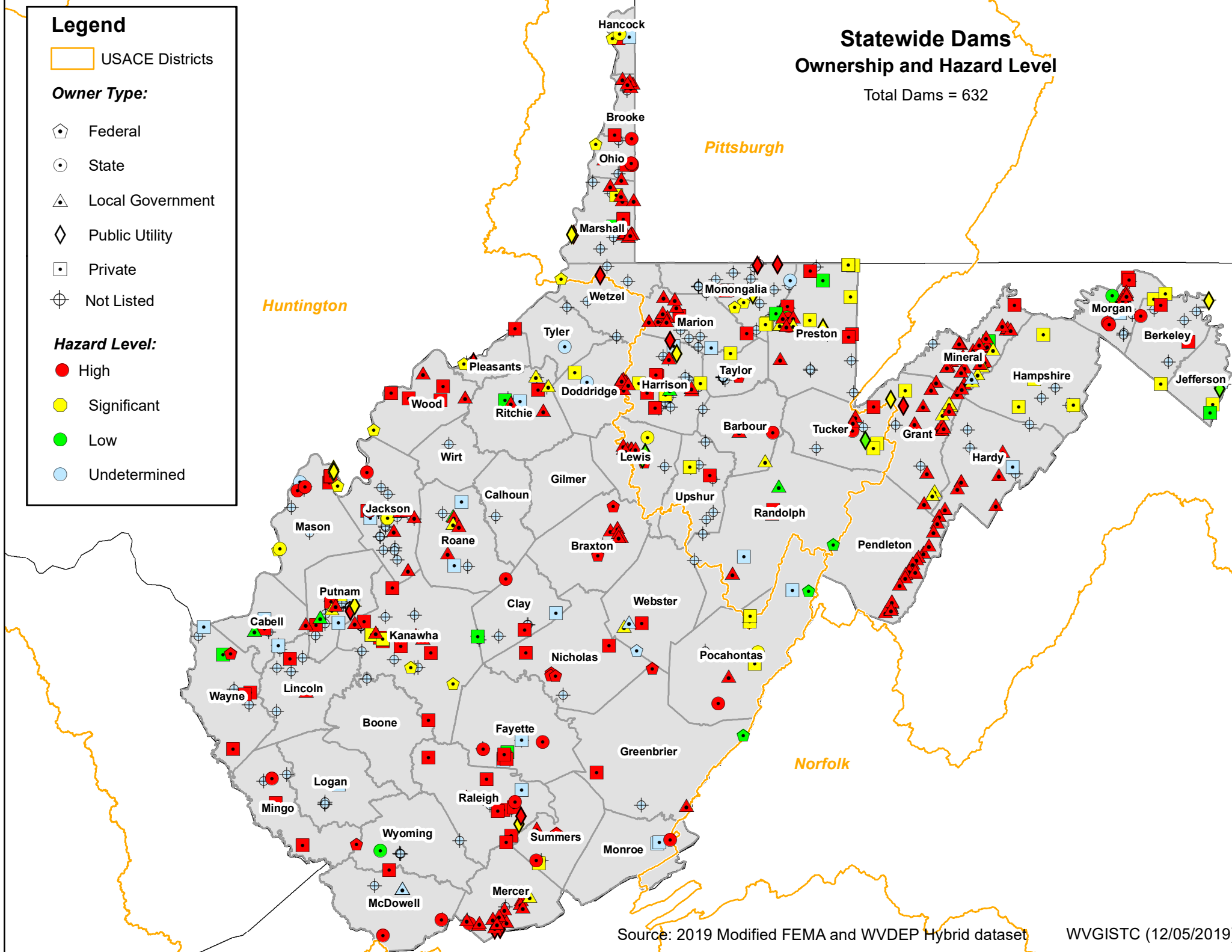
- Federal
- State
- Local Government
- Public Utility
- Private
- Not Listed

Hazard Level:

- High
- Significant
- Low
- Undetermined

Statewide Dams Ownership and Hazard Level

Total Dams = 632



Corps Silver Jackets Program Districts in West Virginia

Map Date: 17 August 2016
Huntington Silver Jackets Program







Huntington (65%)

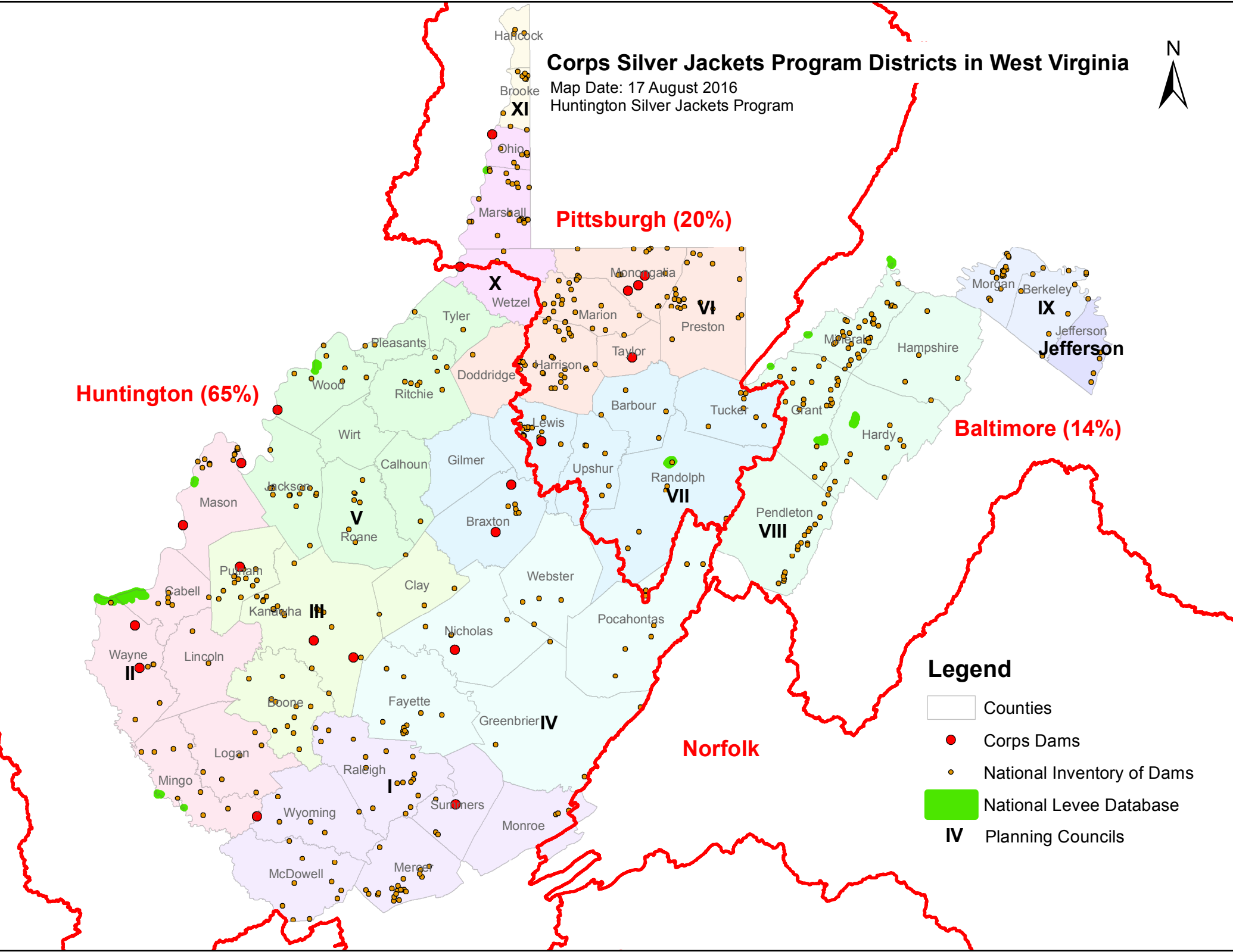
Pittsburgh (20%)

Baltimore (14%)

Norfolk

Legend


-  Counties
-  Corps Dams
-  National Inventory of Dams
-  National Levee Database
- IV** Planning Councils



Statewide Dam By Mining or Non-Mining For West Virginia


Total Dams = 55


Legend

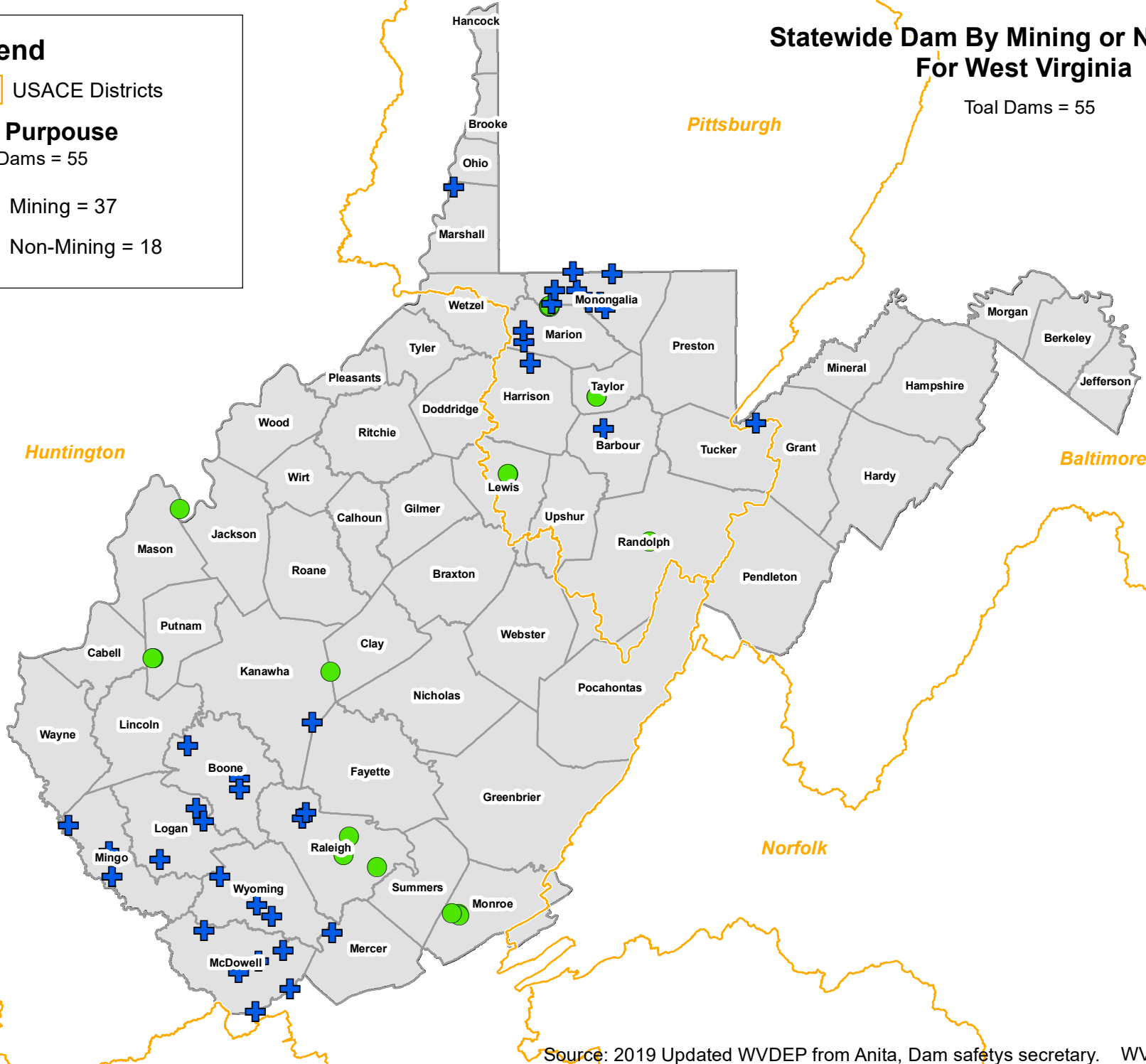
 USACE Districts

Dam Purpose

Total Dams = 55

 Mining = 37

 Non-Mining = 18



Source: 2019 Updated WVDEP from Anita, Dam safety secretary. WV GISTC (11/6/2019)

Statewide Levees

No. of Levees = 22

Huntington

Pittsburgh

Baltimore

Norfolk

Legend

Levee Status

- Accredited
- Non-Accredited
- Provisionally Accredited
- Under Review
- USACE Districts

Sources: 2019 FEMA's National Flood Hazard Layers; supplemented names from USACE National Levee Database.

WVGISTC (11/8/2019)

