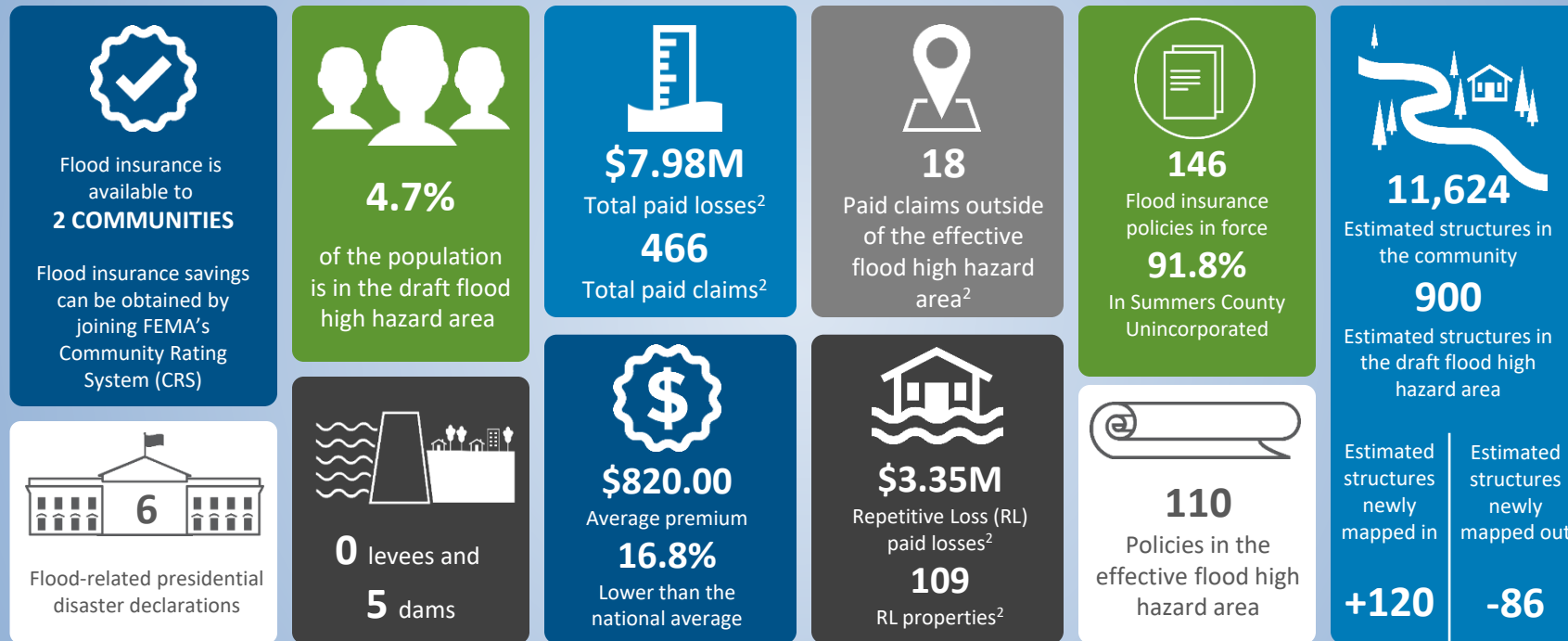


Flood Risk Dashboard

Summers County, WV and Incorporated Areas

FEMA's Risk Mapping, Assessment, and Planning (Risk MAP) Program helps strengthen communities by identifying actions they can take now to reduce their hazard risk, enhance local planning, improve outreach through risk communications, and increase local resilience to natural hazards. Below is an overview of some key items identified during the Changes Since Last FIRM¹ impact assessment.

The information presented below are estimates as of [Month Year]. ¹Flood Insurance Rate Map ²Since 1978 ³Community Coordination and Outreach (CCO) Meeting



KEEPING COMMUNITIES INFORMED: Your Risk MAP Timeline

