

WV Flood Study Project Status

March 2023

<< Future Trends in Mapping >>

- Floodplain Mapping Resolution: Mapping at higher watershed drainage resolution (1-square mile watershed)
- Gridded Flood Risk Products Resolution: Higher spatial resolution of 1-meter grid cell size for flood risk products (e.g., Water Surface Elevation, Water Depth).
- Depth Grids for Multiple Flood Events: Depth Grids published for multiple flood events (10, 04, 02, 01, 0.2 percent chance)
- X-Sections for A Zones: In addition to AE Zones, published BFE cross sections for all Approximate A Zones

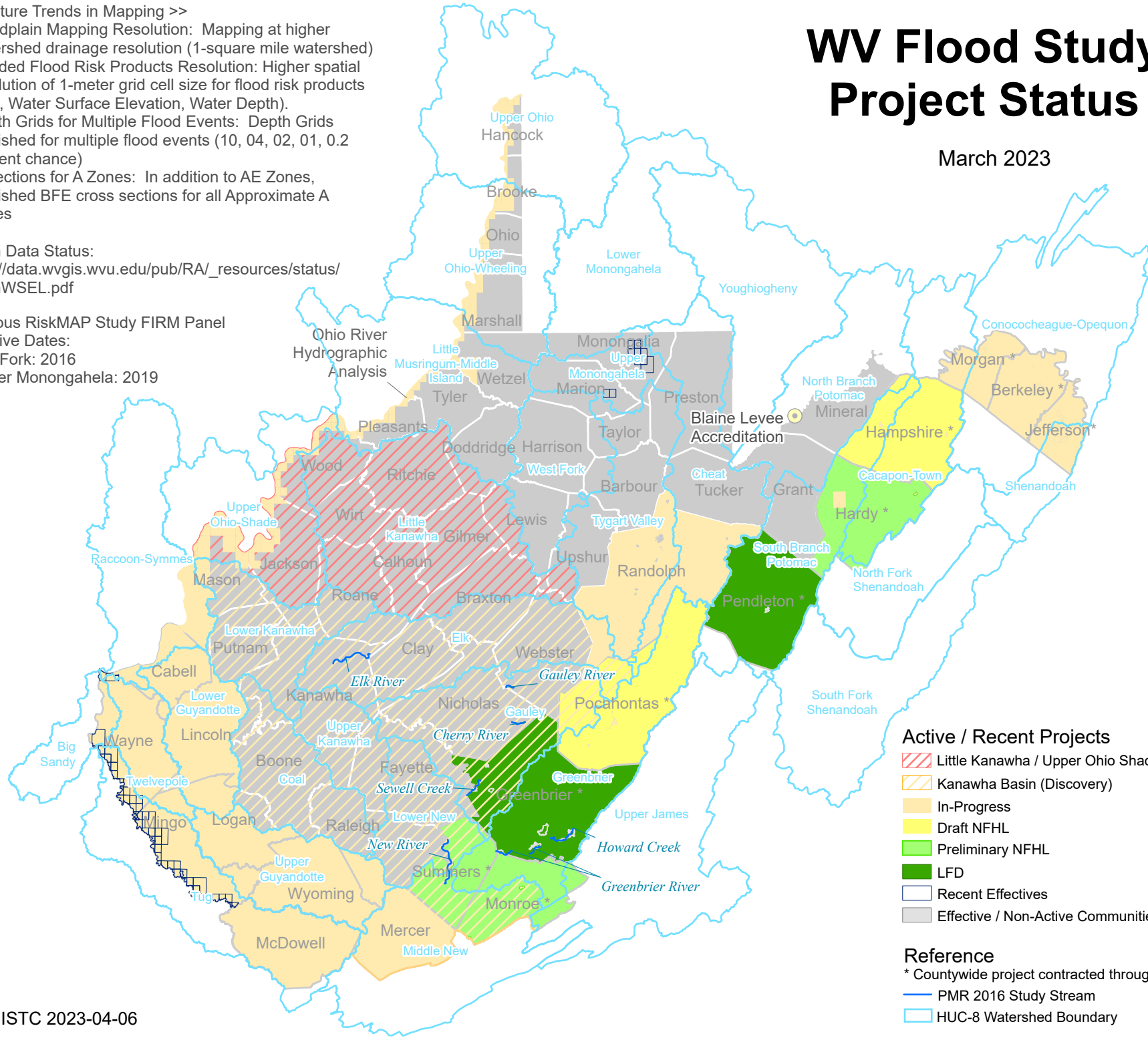
Depth Data Status:

https://data.wvgis.wvu.edu/pub/RA/_resources/status/DepthWSEL.pdf

Previous RiskMAP Study FIRM Panel

Effective Dates:

- Tug Fork: 2016
- Upper Monongahela: 2019



Active / Recent Projects

- Little Kanawha / Upper Ohio Shade (Discovery Pending)
- Kanawha Basin (Discovery)
- In-Progress
- Draft NFHL
- Preliminary NFHL
- LFD
- Recent Effectives
- Effective / Non-Active Communities

Reference

- * Countywide project contracted through the State
- PMR 2016 Study Stream
- HUC-8 Watershed Boundary