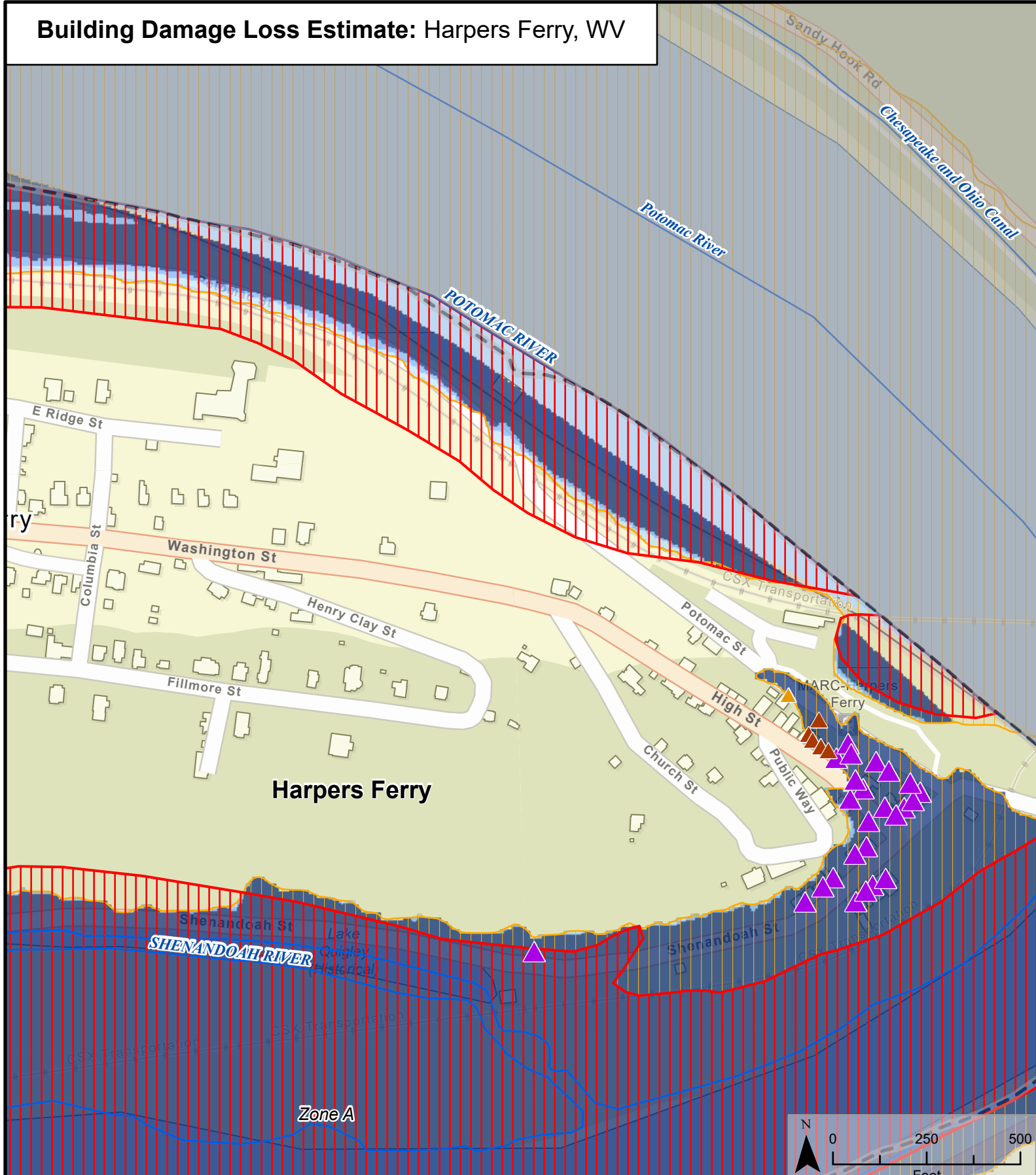


# Building Damage Loss Estimate: Harpers Ferry, WV



<ul style="list-style-type: none"> <li>--- Buried Stream/River</li> <li>— Stream/River</li> <li>▭ Political Boundary</li> <li>● At-Risk State Asset or Essential Facility</li> </ul>	<p><b>Building Loss (%)</b></p> <ul style="list-style-type: none"> <li>▲ &gt; 50%</li> <li>▲ 25-50%</li> <li>▲ 0-25%</li> <li>● No depth (May qualify for LOMA)</li> </ul>	<p><b>1%-Annual-Chance Event Flood Depth</b></p> <ul style="list-style-type: none"> <li>□ ≤ 1 Foot</li> <li>□ 1 - 4 Feet</li> <li>□ 4+ Feet</li> </ul>	<p><b>1%-Annual-Chance Event Flood Zone</b></p> <p>FEMA Effective Flood Zones</p> <ul style="list-style-type: none"> <li>▨ Zone AE FLOODWAY</li> <li>▨ Zone AE (AH, AO)</li> <li>▨ Zone A</li> </ul>	<p>High Risk Advisory Flood Zones</p> <ul style="list-style-type: none"> <li>▨ Updated Zone AE</li> <li>▨ Advisory Zone A</li> </ul>	<p>Map Extent</p> <p>Map Date 7/15/2020</p>
--	--	--	--	--	---