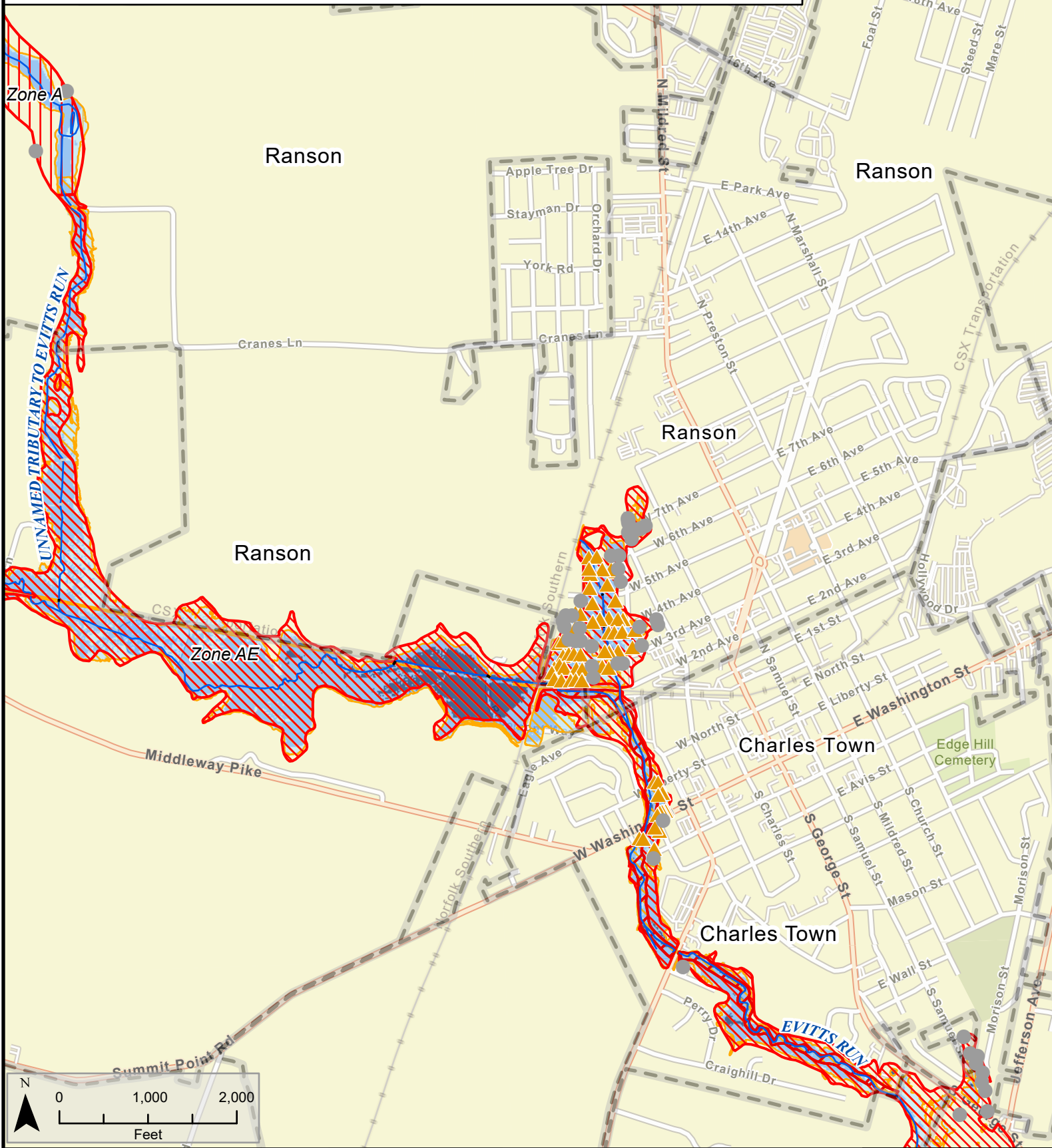


# Building Damage Loss Estimate: Charles Town and Ranson, WV



|  |  |  |   |  |
|--|--|--|---|--|
| <ul style="list-style-type: none"> <li>--- Buried Stream/River</li> <li>— Stream/River</li> <li>- - - Political Boundary</li> <li>● At-Risk State Asset or Essential Facility</li> </ul> | <p><b>Building Loss (%)</b></p> <ul style="list-style-type: none"> <li>▲ &gt; 50%</li> <li>▲ 25-50%</li> <li>▲ 0-25%</li> <li>● No depth (May qualify for LOMA)</li> </ul> | <p><b>1%-Annual-Chance Event Flood Depth</b></p> <ul style="list-style-type: none"> <li>■ ≤ 1 Foot</li> <li>■ 1 - 4 Feet</li> <li>■ 4+ Feet</li> </ul> | <p><b>1%-Annual-Chance Event Flood Zone</b></p> <p>FEMA Effective Flood Zones</p> <ul style="list-style-type: none"> <li>■ Zone AE FLOODWAY</li> <li>■ Zone AE (AH, AO)</li> <li>■ Zone A</li> </ul> <p>High Risk Advisory Flood Zones</p> <ul style="list-style-type: none"> <li>■ Updated Zone AE</li> <li>■ Advisory Zone A</li> </ul> | <p>Berkeley County Maryland</p> <p>Jefferson County</p> <p>Map Extent</p> <p>Virginia</p> <p><b>Map Date 7/15/2020</b></p> |
|--|--|--|---|--|