

# WV Redistricting GIS Products

04/01/2022

PRODUCT	DESCRIPTION	WEB LINKS
<b>County Reports</b> (Excel Spreadsheet)	GEO-SVRS Precinct Mismatch List	<a href="#">Download County Mismatch File</a>
	GEO-SVRS Voter List	<a href="#">Download County Voter List File</a>
	E-911 Site and Street Ranges	<a href="#">Download Select Counties</a>
<b>Map Viewers</b> (Online Web)	WV Voter Map 2022 (Public)	<a href="http://www.mapwv.gov/vote">www.mapwv.gov/vote</a>
	WV Geo-Enables SVRS Tool (Non-Public) <i>formerly the redistricting web map</i>	<a href="http://www.mapwv.gov/svrs">www.mapwv.gov/svrs</a>
<b>Progress Tracking</b> (Excel Spreadsheet)	County SVRS-GEO and Address Geocoding Statuses	<a href="#">Table</a>   <a href="#">Graphic</a>   <a href="#">Geocode Status</a>
	Precinct SVRS-GEO Status	<a href="#">Table</a>   <a href="#">Graphic</a>
<b>Online Resources</b>	County Clerk Redistricting Resources	<a href="http://www.mapwv.gov/redistricting">www.mapwv.gov/redistricting</a>

Statewide Voter Registration System (SVRS) Reports link tabular data to Map Viewer

G-SVRS TOOL

PUTNAM Precinct Mismatch List (V3)										
03/24/2022										
GEO	Voting Precinct	SVRS Voter ID	VRS Combo	SVRS Precinct	GEO Precinct	VR	PV	FT	X	Y
1	1	331973	81 22	1	1	<a href="#">Link</a>	<a href="#">Link</a>	<a href="#">Link</a>	-81.9838	38.60887
7	1	737224	73 22	1	1	<a href="#">Link</a>	<a href="#">Link</a>	<a href="#">Link</a>	-81.9838	38.60887
8	1	349926	81 22	1	1	<a href="#">Link</a>	<a href="#">Link</a>	<a href="#">Link</a>	-81.9838	38.60887
9	1	100771046	4 7	1	1	<a href="#">Link</a>	<a href="#">Link</a>	<a href="#">Link</a>	-81.981	38.60915
0	1	100275392	9 15	1	1	<a href="#">Link</a>	<a href="#">Link</a>	<a href="#">Link</a>	-81.9818	38.61775
1	1	356393	49 40	1	1	<a href="#">Link</a>	<a href="#">Link</a>	<a href="#">Link</a>	-81.9749	38.62171
12	1	100890117	49 40	1	1	<a href="#">Link</a>	<a href="#">Link</a>	<a href="#">Link</a>	-81.9749	38.62171
3	1	100662277	49 40	1	1	<a href="#">Link</a>	<a href="#">Link</a>	<a href="#">Link</a>	-81.9749	38.62171

County Precinct Mismatch Report



G-SVRS Map Tool

# Geo-enabled SVRS

## STATEWIDE SPATIAL DATA ASSESSMENT 3/22/2022

### County Summary Audit Report for SVRS Data Pull 3/22/2022

- 93% of the Total SVRS records were geocoded to site voter points (Column H in spreadsheet) and then validated by the spatial data audit
- 20 counties have SVRS-GEOgraphic Precinct Mismatch Rates < 5% (Column N in spreadsheet)
- 13% of the site geocoded SVRS PRECINCT records do not match the GEO PRECINCTS; or vice versa, a statewide 87% SVRS-GEO match rate (Column N summary)

### Precinct Summary Audit Report for SVRS Data Pull 3/22/2022

- [Precinct 43](#) in Mingo County (town of Kermit) has the lowest address “site” geocode rate at 30.6%
- 17 precincts have less than 20 site geocoded voters in the precinct
- [Precinct 36](#) of Jefferson County has the largest number of Voter Precinct Mismatches at 1,440
- 68% of the precincts (1,149 of 1,679) have a Precinct Mismatch Rate < 10%

# SVRS Site Geocoding Match Rate

Countywide *Geocode* Site Address Match Rate should be > 95%

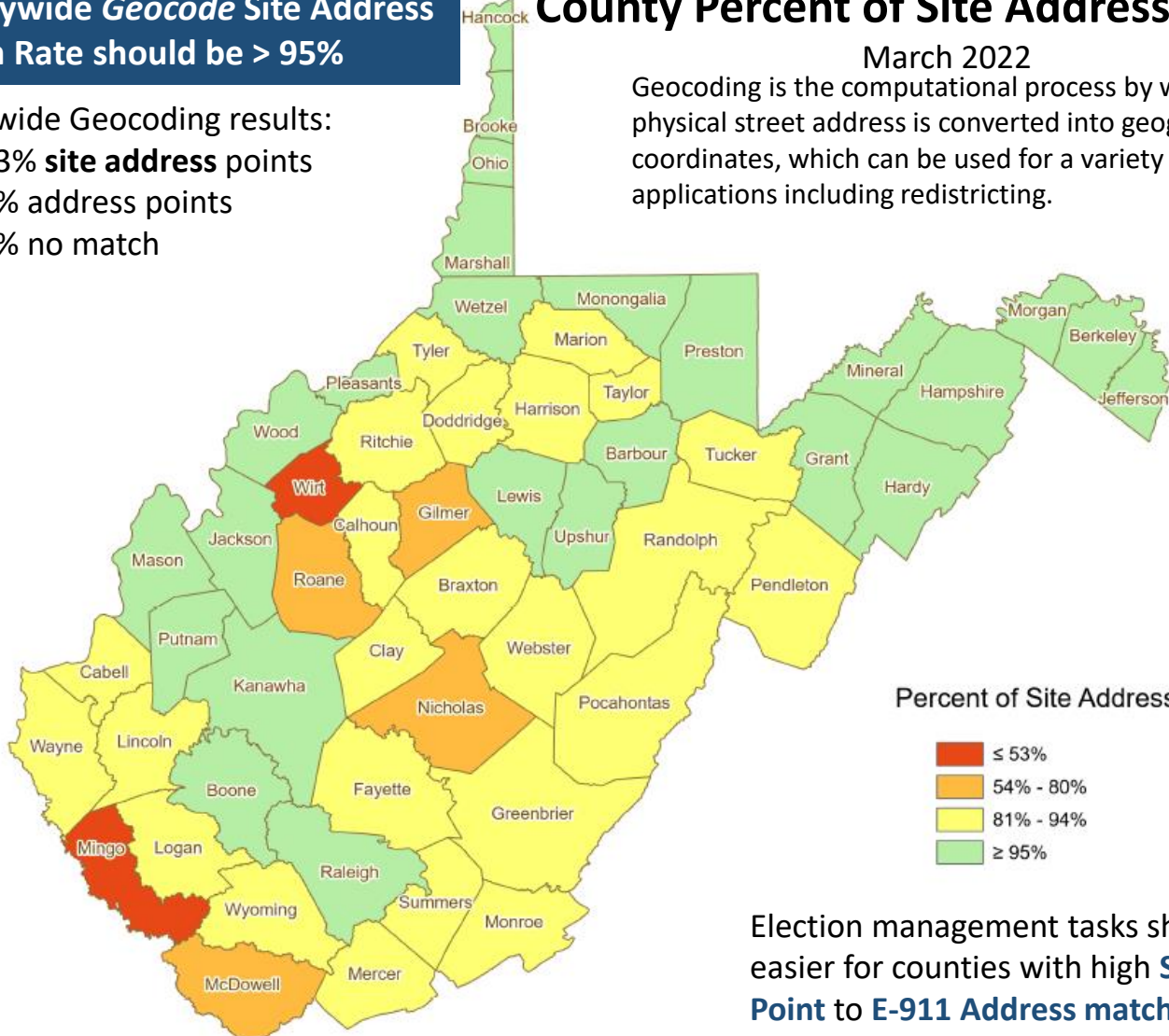
Statewide Geocoding results:

- 93% **site address** points
- 6% address points
- 1% no match

## County Percent of Site Address Matches

March 2022

Geocoding is the computational process by which a physical street address is converted into geographic coordinates, which can be used for a variety of mapping applications including redistricting.



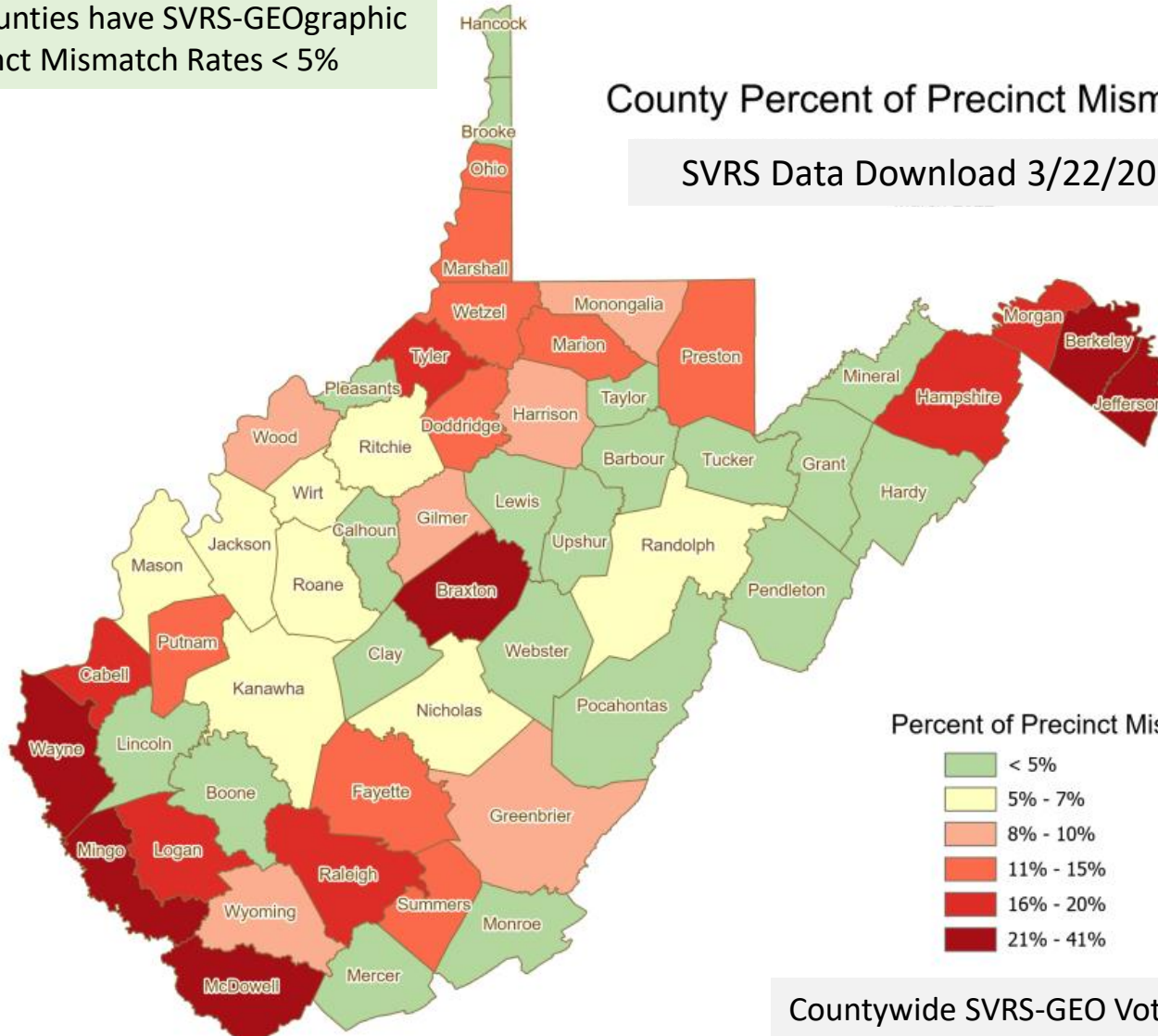
Election management tasks should be easier for counties with high **SVRS Voter Point to E-911 Address** match rates

# County Precinct Mismatch Status

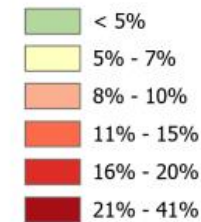
20 counties have SVRS-GEOgraphic Precinct Mismatch Rates < 5%

County Percent of Precinct Mismatches

SVRS Data Download 3/22/2022



Percent of Precinct Mismatches



Countywide SVRS-GEO Voter Mismatch Rate should be < 5%

# Precinct-Level Mismatch Status

SVRS Data Download 3/22/2022

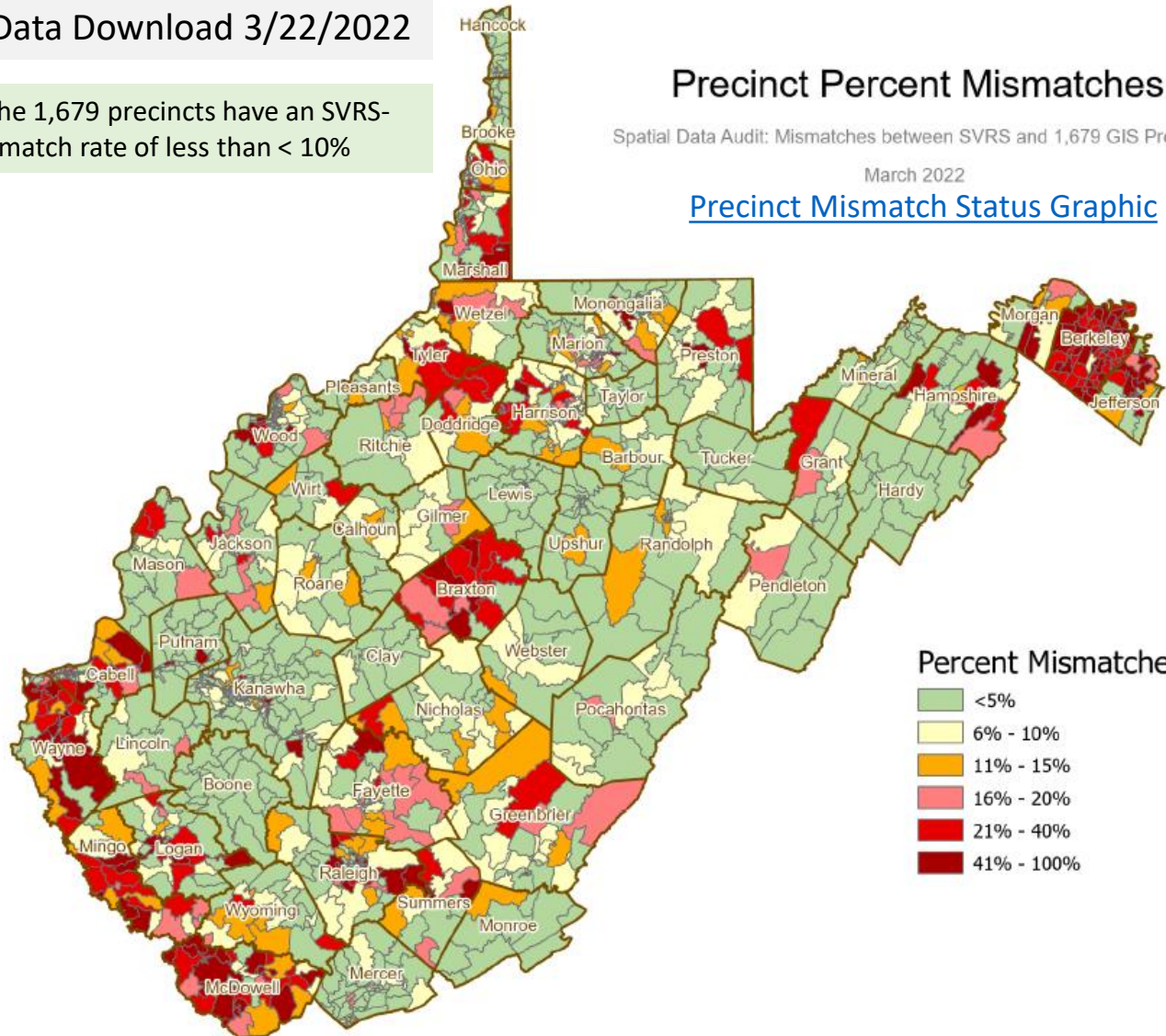
68% of the 1,679 precincts have an SVRS-GEO mismatch rate of less than < 10%

## Precinct Percent Mismatches

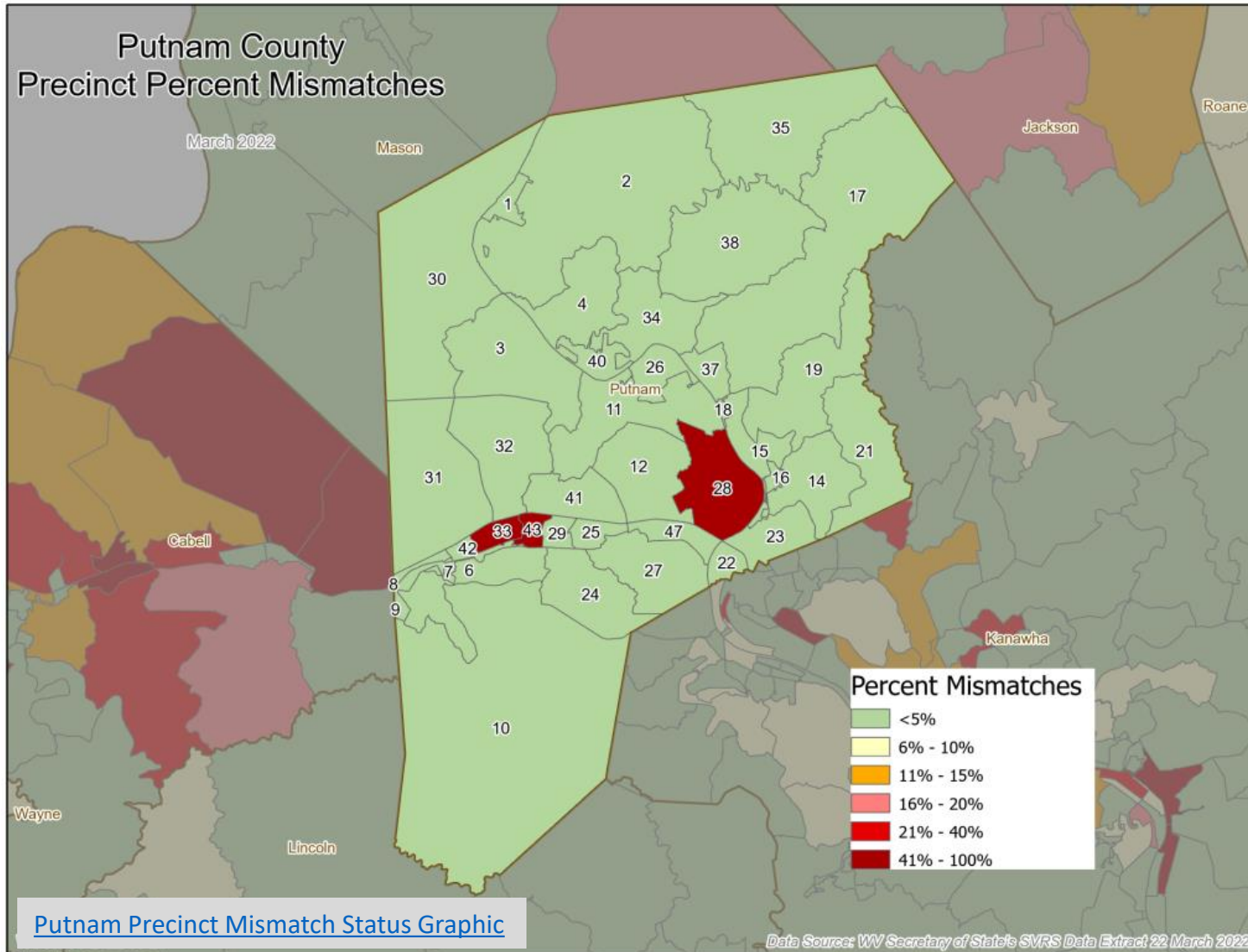
Spatial Data Audit: Mismatches between SVRS and 1,679 GIS Precincts

March 2022

[Precinct Mismatch Status Graphic](#)



# Precinct-Level Mismatch Status



A zoomed-in view of Putnam County's precinct redistricting status of 3/22/2022 reveals it will attain a countywide "mismatch" rate of less than 5% if Precincts 28, 33, and 43 are updated in the SVRS

# County-Level Audit (Putnam)

1

2

3

## Geocoding (Address Matching)

County	Total Voting Register Records	# Precincts	# Precincts Standardized	# SLDBP	# Magisterial Districts	# SITE ADDRESS MATCHES	% SITE Address Matches	# STREET Address Matches	% STREET Address Matches	# UN-MATCHED Address Matches	% UN-MATCHED Address Matches
Putnam	37,893	39	7	34	3	35,963	94.9%	1,842	5%	88	0%

4

5

## Spatial Audit between SVRS Records and GEO-Election Districts

6

County	# Precinct Mismatches	% Precinct Mismatches	# Magisterial Mismatches	% Magisterial Mismatches	# House Mismatches	% House Mismatches	# Senate Mismatches	% Senate Mismatches	# Congressional Mismatches	% Congressional Mismatches	# County Mismatches	% County Mismatches	# Total Mismatch Flags
Putnam	3,861	10.7%	15,961	44%	33,317	93%	185	1%	6	0.0%	66	0.2%	53,396

- 1) # of precincts standardized (e.g., leading zeros 02, alphabet splits, 25-6 or 25A, town suffix 12T)
- 2) # of precincts where the State Legislative District Borders the Precinct (SLBD)
- 3) Geocode site address match rate for county (target match rate > 95%)
- 4) # of mismatched voter points between SVRS Records and GEO-Election Precincts
- 5) % of precinct SVRS-GEO mismatches (target mismatch rate < 5%)
- 6) Total mismatch flags (precinct, magisterial, state house, state senate, congressional, outside county)

# Precinct Level Audit (Putnam)

1

2

3

4

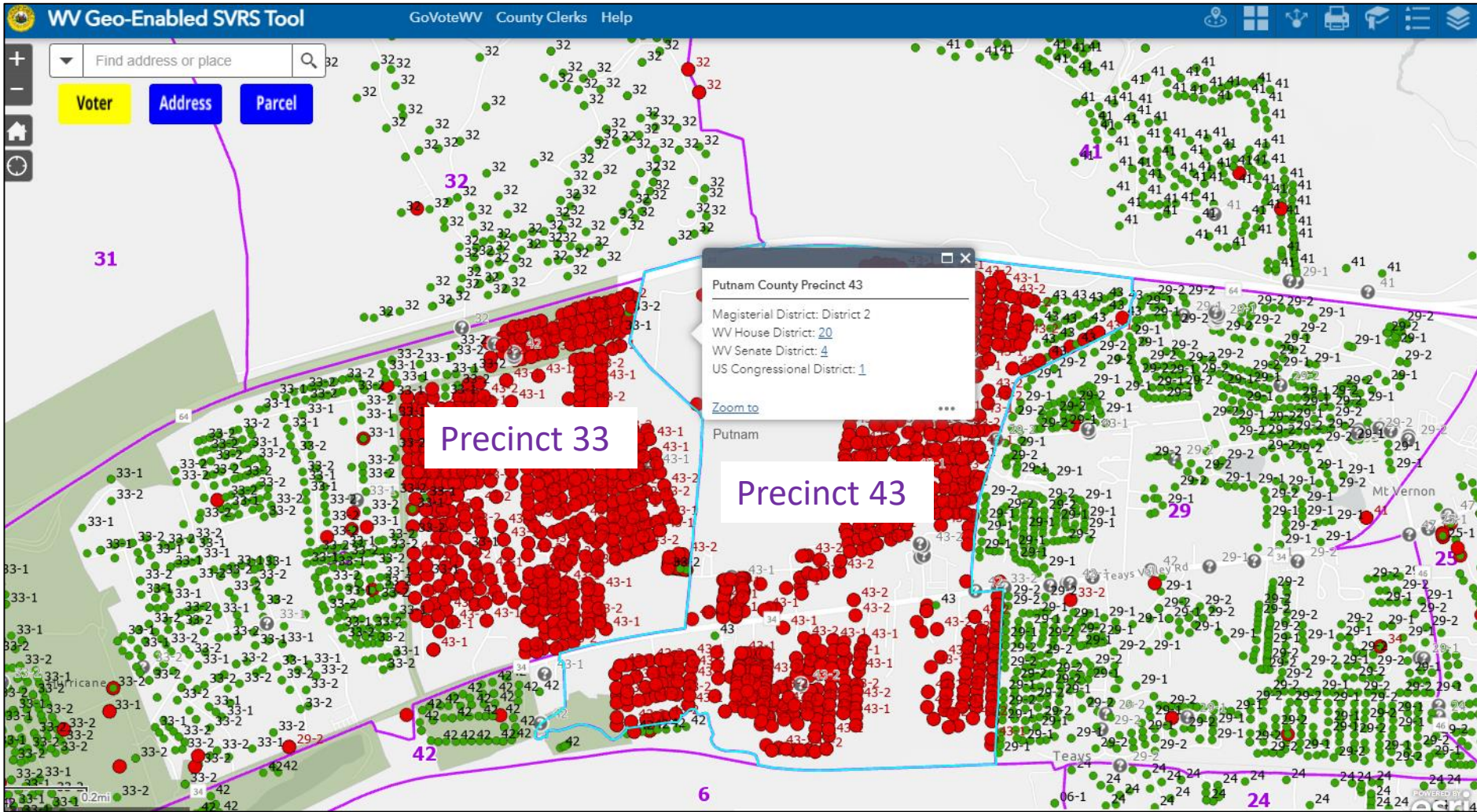
5

Precinct	County	Total Registered Voter Records	Precinct Standard-ized	SLDBP	# Precinct Mismatches	% Precinct Mismatches	Map Link
43	Putnam	1476	No	Yes	1359	95.0%	<a href="#">SVRS</a>
33	Putnam	2458	Yes	Yes	1169	48.1%	<a href="#">SVRS</a>
28	Putnam	867	No	Yes	823	99.5%	<a href="#">SVRS</a>
23	Putnam	1296	No	Yes	60	4.9%	<a href="#">SVRS</a>
37	Putnam	346	No	Yes	11	4.5%	<a href="#">SVRS</a>
18	Putnam	236	No	Yes	5	3.9%	<a href="#">SVRS</a>
35	Putnam	226	No	Yes	8	3.8%	<a href="#">SVRS</a>

- 1) # of SVRS precincts standardized (e.g., leading zeros 02, alphabet splits 25-6 or 25A, town suffix 12T)
- 2) # of precincts where the State Legislative District Borders the Precinct (SLBD)
- 3) # of of mismatched voter points between SVRS Records and GEO-Election Precincts
- 4) % of precinct SVRS-GEO mismatches (target mismatch rate < 5%)
- 5) Map link to precinct using GIS-Enabled SVRS Tool



# Precinct Level Audit (Putnam)

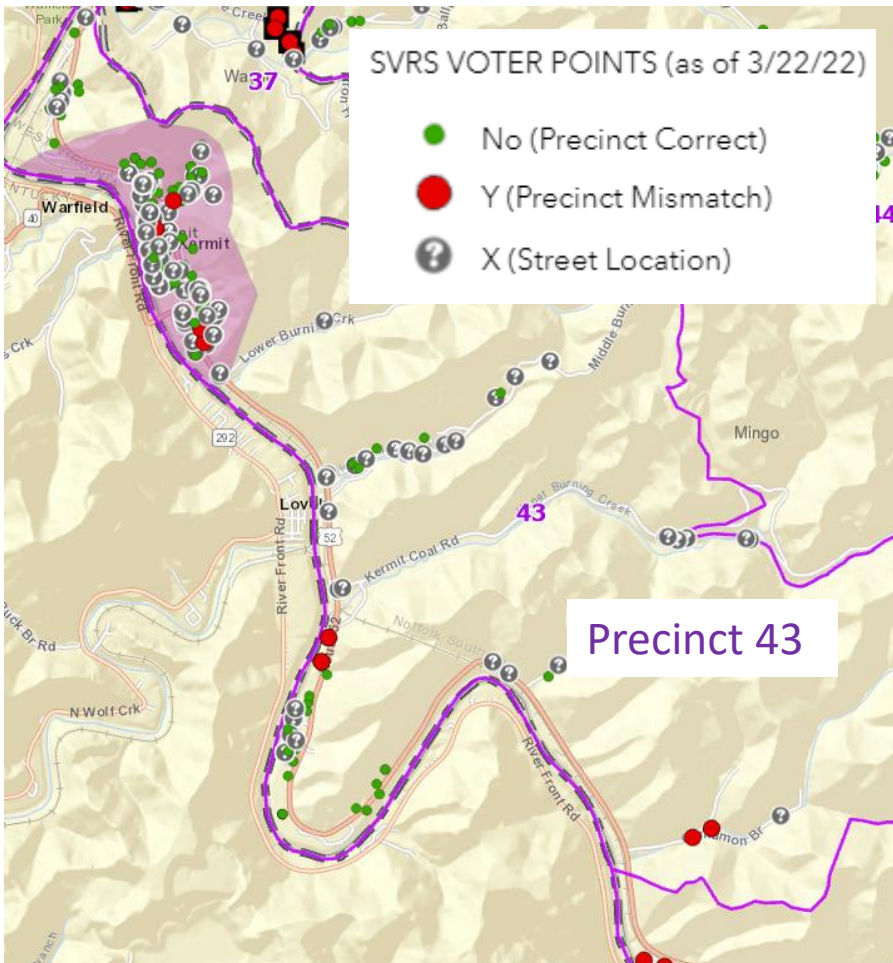


[View specific precincts on G-SVRS Tool](#)

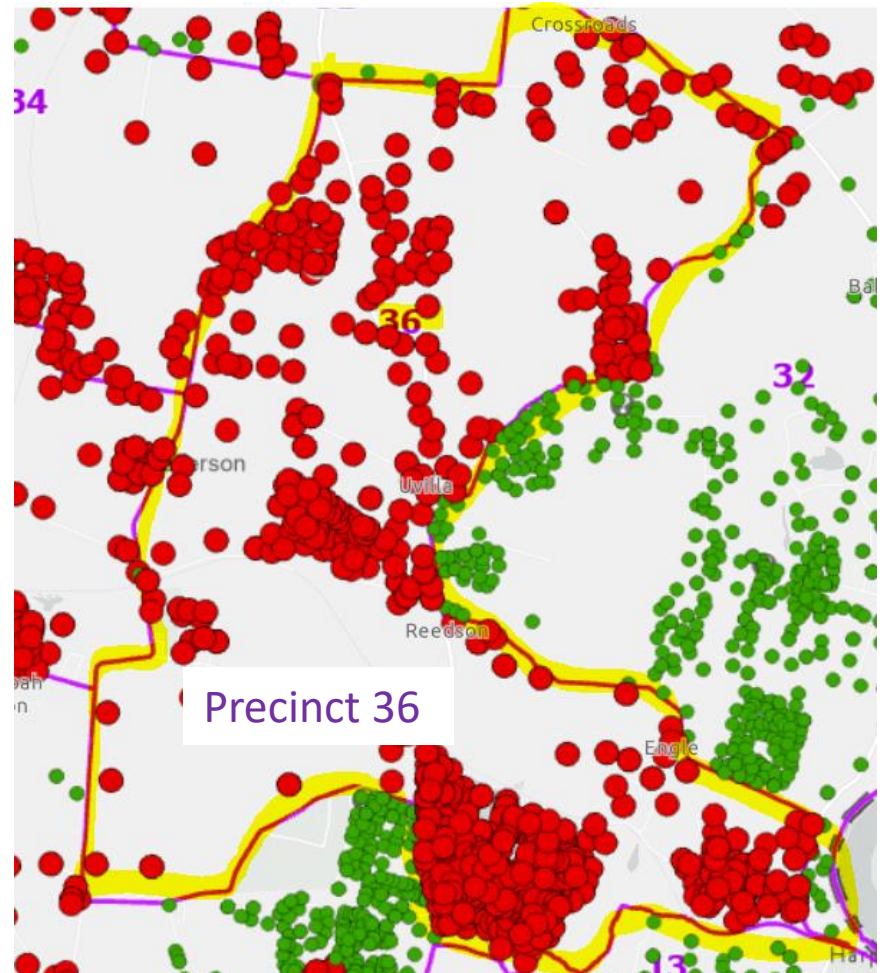
# Precinct-Level Audit (3/22/22)

## [SVRS Precinct Mismatch Spreadsheet Report](#)

[Precinct 43](#) in Mingo County (town of Kermit) has the lowest address “site” geocode rate at 30.6%



[Precinct 36](#) of Jefferson County has the largest number of Voter Precinct Mismatches at 1,440



# Statewide Spatial Audit Overview

SVRS SPATIAL AUDIT 3/22/22	COUNT	%	NOTES
<b>SVRS Records Geocoded</b>	<b>1,055,205</b>		
Precinct Mismatch	133,345	13%	13% of SVRS records do not match the GIS PRECINCT files
Magisterial District Mismatch	163,392	15%	15% of SVRS records do not match the GIS MAGISTERIAL Districts
State House	295,120	28%	28% of SVRS records do not match the GIS STATE HOUSE Districts
State Senate	46,978	4%	4% of SVRS records do not match the GIS STATE SENATE Districts
Congressional	6,028	1%	1% of SVRS records do not match the GIS CONGRESSOINAL Districts
Outside County	2,052	0.2%	0.2% of SVRS records are located OUTSIDE of the County. Points in parcels that overlap jurisdictional boundaries may be valid.

GEOCODING STATUS 3/22/22	COUNT	%	NOTES
<b>Total SVRS Records</b>	<b>1,130,271</b>		<b>Two Address Locators (WV SAMS &amp; Esri) performed the geocoding</b>
Site Address Match	1,055,205	93.4%	93% of SVRS records geocode to a site point. Some points may not be located to the building footprint or are false positives.
Street Address Match	64,199	5.7%	Records not evaluated for mismatch by spatial audit
Unmatched	10,867	1.0%	Records not evaluated for mismatch by spatial audit
<b>County Site Match Rates</b>			<b>County Site Matches should be &gt; 95%</b>
Highest Site Match		99.5%	Jefferson County has the highest site address match rate
Lowest Site Match		49.3%	Wirt County has the lowest site address match rate

PRECINCT/MAGISTERIAL STATEWIDE COUNTS	COUNT	%	NOTES
<b>Voting Precincts</b>	<b>1,679</b>		
Precincts Standardized	56	3%	3% of SVRS Precincts have to be standardized to Geo Precincts
SLDBP	1,263	75%	75% of the precincts border State Legislative Districts
Min	9		Richie County has the least number of precincts
Max	191		Kanawha County has the highest number of precincts
<b>Magisterial Districts</b>	<b>195</b>		

# Geo-Enabled SVRS

**County Reports**

# County Redistricting Reports

Report Type	Download	Source	Description
<b>Precinct Mismatch</b> (also known as V3 report)	<a href="#">Download</a> <a href="#">Link</a>  <a href="#">Metadata</a>	SVRS 3/22/2022 data pull	Spatial Audit. Lists precinct mismatches between site geocoded SVRS points and GEOgraphic GIS file. Links records to Geo-Enabled SVRS ( <a href="http://www.mapwv.gov/svrs">www.mapwv.gov/svrs</a> ) map view. Sorted on GEO Precinct, House Number, Street Name. Excel Spreadsheet format.
<b>Voter List</b>	<a href="#">Download</a> <a href="#">Link</a>  <a href="#">Metadata</a>	SVRS 3/22/2022 data pull	Spatial Audit. Lists all SVRS records and Address Matching (geocoding) status of each record: site match, street match, unmatched, and site matched outside county border. Identifies six mismatch types (precinct, magisterial, state house, state senate, congressional, and outside county) for site geocoded SVRS points. Links records to Geo-Enabled SVRS ( <a href="http://www.mapwv.gov/svrs">www.mapwv.gov/svrs</a> ) map view. Sorted on GEO Precinct, House Number, and Street Name. Text CSV format which can be imported into Excel or other software. Voter lists are generated at both the state and county levels.
<b>E-911 Street and Site Addresses</b>	<a href="#">Download</a> <a href="#">Link</a>	Statewide Master Address File	Two reports that provides street range and site address information of voting precincts for redistricting. Excel spreadsheet format.

Note: Use the Excel “Freeze Panes” and “Filter” commands to navigate and screen records of interest.

# County Precinct Mismatch Report

A spreadsheet that identifies the number of flagged Voter Points that are potentially incorrect in the SVRS. A map link to the G-SVRS Tool allows users to visualize precinct mismatches generated from the spatial audit of SVRS Voter Points. Records are sorted on Geo Precinct, House Number, and Street Address. [Download County Mismatch File](#).

GEO	SVRS							GEO	GEO Link
Voting Precinct Name (NEW)	VRS Voter ID	VRS Combo ID	VRS House Number	VRS Street Name	VRS City	VRS Zip	VRS Precinct	GEO Precinct (NEW)	G-SVRS Map Link
33	741486	3		#3 GREENBRIER AVENUE	HURRICANE	25526	43-1	33	<a href="#">Link</a>
33	736541	3	301	ADA DELL COURT	HURRICANE	25526	43-1	33	<a href="#">Link</a>
33	100757647	15	302	ADA DELL COURT	HURRICANE	25526	43-2	33	<a href="#">Link</a>
33	100187086	3	303	ADA DELL COURT	HURRICANE	25526	43-1	33	<a href="#">Link</a>
33	739249	3	303	ADA DELL COURT	HURRICANE	25526	43-1	33	<a href="#">Link</a>
33	100805746	15	304	ADA DELL COURT	HURRICANE	25526	43-2	33	<a href="#">Link</a>
33	100587102	3	27	AUGUSTA LANE	HURRICANE	25526	43-1	33	<a href="#">Link</a>

Example extract from Putnam County's Precinct Mismatch Report



# Voter List Data Fields (SVRS Fields)

DATA FIELD (SVRS)	SAMPLE SVRS RECORD 1	SAMPLE SVRS RECORD 2
USER_ID_VOTER	100421159	100741380
USER_County_Name	PUTNAM	PUTNAM
USER_Address	116 18 MILE CREEK RD	35 ALLEN ST
USER_HOUSE_Number	116	35
USER_STREET	18 MILE CREEK RD	ALLEN ST
USER_STREET2	N/A	N/A
USER_UNIT	N/A	N/A
USER_CITY	BUFFALO	BUFFALO
USER_STATE	WV	WV
USER_ZIP	25033	25033
USER_MAIL_HouseNum	116	35
USER_MAIL_Street	18 MILE CREEK RD	ALLEN ST
USER_MAIL_Street2	N/A	N/A
USER_MAIL_Unit	N/A	N/A
USER_MAIL_City	BUFFALO	BUFFALO
USER_MAIL_State	WV	WV
USER_MAIL_ZIP	25033	25033
USER_Precinct_Number	1	1
USER_Congressional	1	1
USER_Senatorial	8	8
USER_Delegate	13	13
USER_Magisterial	I	I
USER_CombolD	5	5
USER_POLL_NAME	BUFFALO HIGH SCHOOL	BUFFALO HIGH SCHOOL
USER_POLL_St_Num	19005	19005
USER_POLL_Street	CHARLESTON ROAD	CHARLESTON ROAD
USER_POLL_Street2	N/A	N/A
USER_POLL_City	BUFFALO	BUFFALO
USER_POLL_State	WV	WV
USER_POLL_ZIP	25033	25033

Columns A to AH are SVRS data fields

- Data records sorted by
- GEO Precinct (Column AM)
  - House Number (Column H)
  - Street Name (Column I)

[Download County Voter List File](#)



# Voter List Data Fields (GEO Fields)

DATA FIELD (SVRS)	SAMPLE GEO RECORD 1	SAMPLE GEO RECORD 2
Address_Match_Type	WV Site Match	WV Street Match
Geo_CensusBlock	Block 2015	Block 2028
Geo_Municipality	Buffalo	Buffalo
Geo_County	Putnam	Putnam
Geo_Precinct	1	1
Geo_Magisterial	I	I
Geo_House	19	19
Geo_Senate	8	8
Geo_Congressional	1	1
MM_Precinct	N	X
MM_Magisterial	N	X
MM_House	Y	X
MM_Senate	N	X
MM_Congressional	N	X
MM_County	N	X
Total_Flags	1	0
SLDBP	Yes	Yes
VR	<a href="#">G-SVRS map link</a>	<a href="#">G-SVRS map link</a>
PV	<a href="#">Property Viewer</a>	<a href="#">Property Viewer</a>
FT	<a href="#">Flood Tool</a>	<a href="#">Flood Tool</a>
POINT_X	-81.96915167	-81.98440036
POINT_Y	38.62528299	38.61527717

Columns AI to BD are  
GEO data fields

- Data records sorted by
- GEO Precinct (Column AM)
  - House Number (Column H)
  - Street Name (Column I)

[Download County  
Voter List File](#)

# Voter List Metadata (GEO Fields)

<b>Geocoded Address Match Type</b>	
Address_Match_Type	Whether the SVRS address point was a site match, street match or unmatched in the geocoding process. Two geocoder locators are used: WV SAMS and Esri.
<b>GIS Administrative Boundaries</b>	
GEO_Census_Block	Census Block 2020
GEO_Municipality	Unincorporated Community (Census)
GEO_County	County Boundary (1:24,000 scale)
<b>GIS Election GEOgraphies</b>	<b>2022 Redistricting</b>
GEO_Precinct	New Precinct District after 2022 Redistricting
GEO_Magisterial	New Magisterial District after 2022 Redistricting
GEO_House	New House District after 2022 Redistricting
GEO_Senate	New Senate District after 2022 Redistricting
GEO_Congressional	New Congressional District after 2022 Redistricting
<b>Mismatch Flags</b>	Mismatch between SVRS and GIS Election District
Mismatch_Precinct	"Y" if USER_Precinct_Number does not equal GEO_Precinct; "N" if equal; "X" if not applicable (all street matches and unmatched)
Mismatch_Magisterial	"Y" if USER_Magisterial does not equal GEO_Magisterial; "N" if equal; "X" if not applicable (all street matches and unmatched)
Mismatch_House	"Y" if USER_Delegate does not equal GEO_House; "N" if equal; "X" if not applicable (all street matches and unmatched)
Mismatch_Senate	"Y" if USER_Senatorial does not equal GEO_Senate; "N" if equal; "X" if not applicable (all street matches and unmatched)
Mismatch_Congressional	"Y" if USER_Congressional does not equal GEO_Congressional; "N" if equal; "X" if not applicable (all street matches and unmatched)
Mismatch_County	"Y" if USER_County_Name does not equal the geographic county the point is located; "N" if equal; "X" if not applicable (all street matches and unmatched)
<b>Boundary Flags</b>	
Total_Flags	# of Mismatch Flags (Precinct, Magisterial, State House, State Senate, Congressional, Outside County)
SLDBP	A State Legislative District Borders Precinct (SLDBP).
<b>Web Map Links</b>	
VR	Web map link to SVRS Geo-Enabled Tool ( <a href="http://www.mapwv.gov/svrs">www.mapwv.gov/svrs</a> )

[Download Full Metadata](#)

# County E-911 Address Reports

Two reports that provides street range and site address information of voting precincts for redistricting. Some counties found these reports helpful for assigning street segments to precincts. Excel spreadsheet format. [Download Select Counties](#)

County	PRECINCT	Address Number	Street Name	Full Address	Place	Zip
Putnam	1	6	6TH AVE	6 6TH AVE	Buffalo	25033
Putnam	1	66	6TH AVE	66 6TH AVE	Buffalo	25033
Putnam	1	124	6TH AVE	124 6TH AVE	Buffalo	25033
Putnam	1	68	7TH AVE	68 7TH AVE	Buffalo	25033
Putnam	1	106	7TH AVE	106 7TH AVE	Buffalo	25033
Putnam	1	118	<b>Address Precinct Report</b>			25033
Putnam	1	39	8TH AVE	39 8TH AVE	Buffalo	25033
Putnam	1	55	8TH AVE	55 8TH AVE	Buffalo	25033
Putnam	1	64	8TH AVE	64 8TH AVE	Buffalo	25033
Putnam	1	41	9TH AVE	41 9TH AVE	Buffalo	25033
Putnam	1	46	9TH AVE	46 9TH AVE	Buffalo	25033
Putnam	1	62	9TH AVE	62 9TH AVE	Buffalo	25033
Putnam	1	63	9TH AVE	63 9TH AVE	Buffalo	25033
Putnam	1	72	9TH AVE	72 9TH AVE	Buffalo	25033

Data records sorted by:

- GEO Precinct
- House Number
- Street Name

*27,012 Putnam County address points from statewide master address file*

The **Address Precinct** report is a list of all 911 addresses within a specific county precinct. This list does not reflect the voters of that precinct, only addresses.

# County E-911 Address Reports

The report summarizes all 911 addresses based upon the street name, giving a high and low address range per **Precinct Road Summary** precinct. This list provides the majority of street and address ranges per precinct, but there are known issues with roads that have discontinuous areas, or roads that traverse multiple precincts (Roads Highlighted in Orange). It is highly recommended that counties consult a map to determine proper ranges for these roads. Download [Address Reports](#) for select counties.

County	PRECINCT	MIN Address	MAX Address	Street Name	County Road ID	Place	Address Count	Multi Precinct
Putnam	1	6	124	6TH AVE	Putnam - 6TH AVE	Buffalo	3	1
Putnam	1	68	118	7TH AVE	Putnam - 7TH AVE	Buffalo	3	1
Putnam	1	39	64	8TH AVE	Putnam - 8TH AVE	Buffalo	3	1
Putnam	1	41	103	9TH AVE	Putnam - 9TH AVE	Buffalo	6	2
Putnam	1	12	73	ALLEN ST	Putnam - ALLEN ST	Buffalo	7	1
Putnam	1	35				Buffalo	4	1
Putnam	1	56				Buffalo	3	1
Putnam	1	18	188	BARBERSHOP LN	Putnam - BARBERSHOP LN	Buffalo	10	1
Putnam	1	36	62	BIRCH LN	Putnam - BIRCH LN	Buffalo	6	1
Putnam	1	106	20924	BUFFALO RD	Putnam - BUFFALO RD	Buffalo	113	2
Putnam	1	17	154	CARDINAL CT	Putnam - CARDINAL CT	Buffalo	22	1

## Precinct Road Summary Report

### Data records sorted by

- GEO Precinct
- House Number
- Street Name

*2,285 Putnam County road summary records from statewide master address file*

### Field Definitions

- **Multi-Precinct field:** Number of precincts the road appears in county
- **Address Count field:** Number of addresses within that precinct on that road

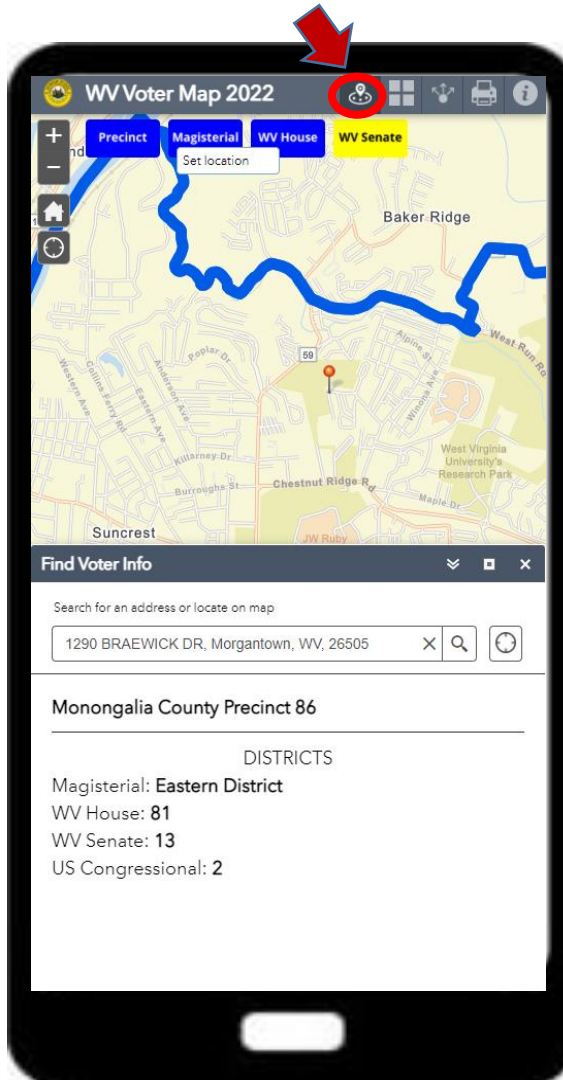
# Geo-Enabled SVRS

**Map Viewers**

# WV Voter Map 2022 (Public)



Find Voter Info function



A public web map application powered by GIS mapping technology to look up election districts and precincts by address

Statewide Extent URL: [www.mapwv.gov/vote](http://www.mapwv.gov/vote)

County Extent URL Example: [www.mapwv.gov/vote/county/Marion](http://www.mapwv.gov/vote/county/Marion)

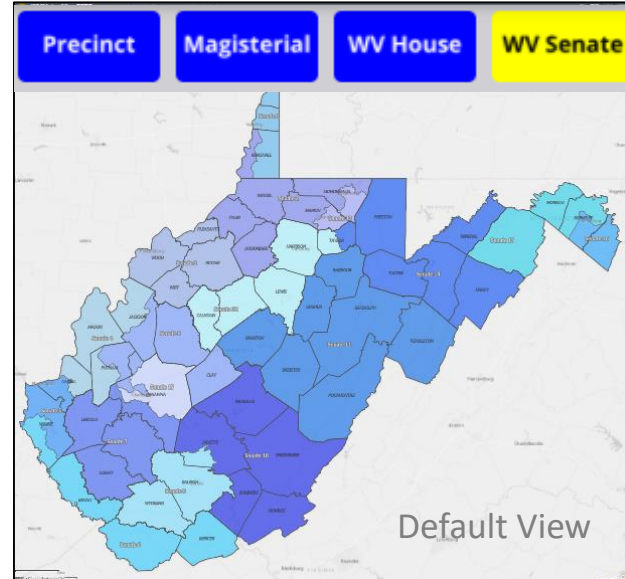
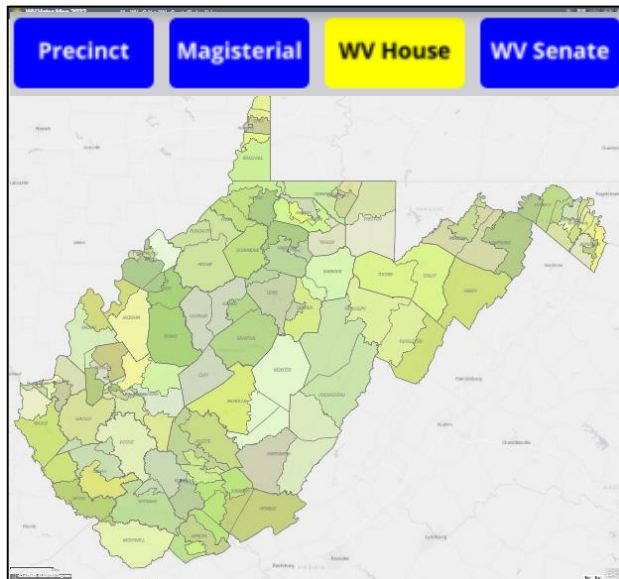
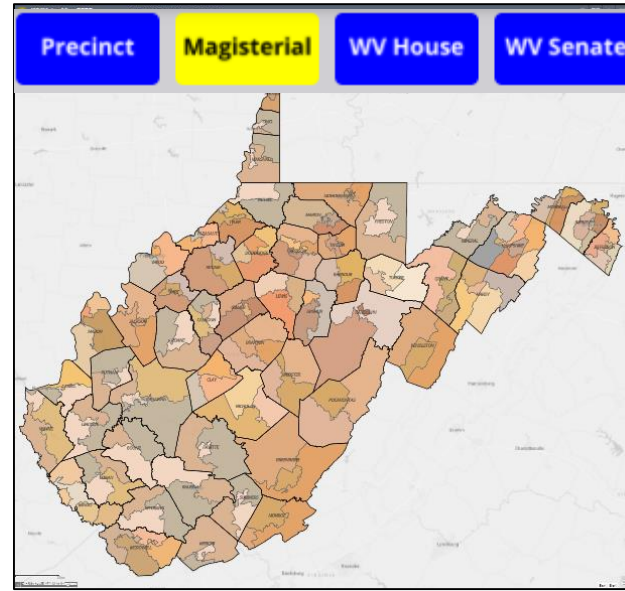
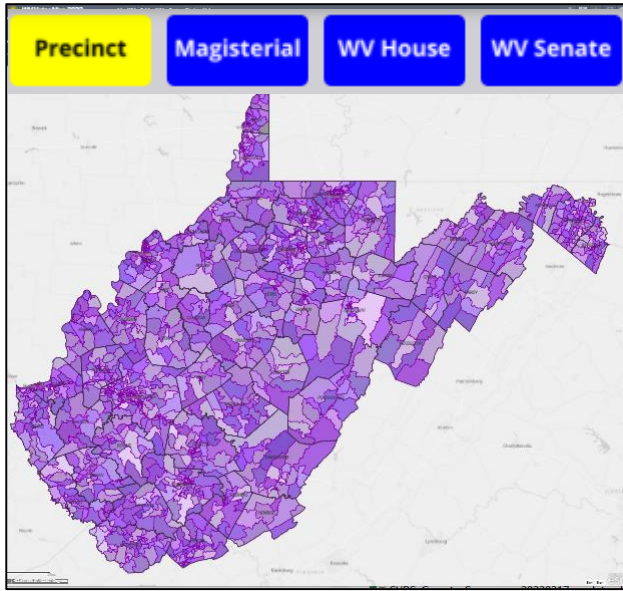
**Instructions:** Enter your street address in the *Find Voter Info* widget to locate your residence. If the address location found by the search tool is incorrect, then use the navigation buttons and base map layers to identify the exact location.

**Voter Info:** The Voter Info panel lists the Voting Precinct, Magisterial District, WV House District, WV Senate District, and U.S. Congressional District.

Alternatively, if the *Voter Info* widget is closed, a *Popup Window* will display same voter information by clicking on the map fame.

**Map Tools:** Find Voter Info, Basemap Gallery, Share Web Link, Print, Info, and Navigation. Refer to the [Help](#) for more instructions about the different map functions

# WV Voter Map 2022 (Public)



Election Layer  
On / Off  
Buttons

Make **election layer** of interest visible by selecting **on/off buttons** (yellow-on; blue-off). Only one election layer can be visible at a time. State Senate districts are visible by default.

- Voter Precinct
- Magisterial District
- State House District
- State Senate District

# Geo-Enabled SVRS Tool (Non-Public)

*A non-public web map application to visualize and validate SVRS points and election boundaries*

Statewide Extent URL: [www.mapwv.gov/svrs](http://www.mapwv.gov/svrs)

County Extent URL Example: <https://Mapwv.gov/svrs/county/Marion>

**WV Geo-Enabled SVRS Tool** GoVoteWV County Clerks Help

Find address or place

Voter Address Parcel

SVRS Voter Point Layer Visible (Yellow Button = Map Layer On)

Click on point to display voter info

**Find Voter Info**

Search for an address or locate on map

1290 BRAEWICK DR, Morgantown, WV

SVRS VOTER POINTS (as of 3/8/22)

Voter ID: 100544936	4.38 ft
Voter ID: 635073	4.38 ft
Voter ID: 601844	4.38 ft

Approximate Distance: 1.41 ft

**Voter ID: 601844**

Combo ID: 161  
Voter Name: I  
Voter Address: 1290 BRAEWICK DR, MORGANTOWN, WV 26505  
Polling Location Name: NORTH ELEMENTARY SCHOOL  
Polling Location Address: 825 CHESTNUT RIDGE RD, MORGANTOWN, WV 26505  
County: MONONGALIA  
Precinct: 86  
Geocode Locator: WV Site Match



# Geo-Enabled SVRS Tool

*A non-public web map application to visualize and validate SVRS points and election boundaries*

Statewide Extent URL: [www.mapwv.gov/svrs](http://www.mapwv.gov/svrs)

County Extent URL Example: <https://mapwv.gov/svrs/county/Putnam>

**WV Geo-Enabled SVRS Tool** GoVoteWV County Clerks Help

Find address or place

Voter Address Parcel

**Popup Window Attributes**

**SVRS Voter Point Precinct Mismatch**

**Legend**

- SVRS VOTER POINTS (as of 3/22/22)
- No (Precinct Correct)
- Y (Precinct Mismatch)
- X (Street Location)
- SVRS VOTER POINTS (as of 3/22/22) - Outside County Mismatch
- Outside County Mismatch
- Geo ELECTION DISTRICTS
- Precinct 2022
- 

Cabell County Precinct 65  
Magisterial District: 3  
WV House District: 22  
WV Senate District: 4  
US Congressional District: 1  
[Zoom to](#)

WV County Assessor, WV Property Tax Division, WVDHSEM, WV

# Geo-Enabled SVRS Tool

County Clerks should verify if SVRS Points Geocoded Outside County Boundary are Valid

**WV Geo-Enabled SVRS Tool** GoVoteWV County Clerks Help

Find address or place

Voter Address Parcel

**SVRS Voter Points OUTSIDE County Boundary**

**District PopUp**

Marion County Precinct 72  
Magisterial District: West Augusta District  
WV House District: 74  
WV Senate District: 2  
US Congressional District: 2

**Voter Info PopUp**

Voter ID: 100717627  
Voter Address: 881 MCCURDYVILLE PIKE, RIVESVILLE, WV 26588  
Polling Location Name: BAXTER COMMUNITY BUILDING  
Polling Location Address: 2741 PAW PAW CREEK RD , BAXTER, WV 26560  
County: MARION  
Precinct: 088  
Geocode Locator: WV Site Match

**Layer List**

- SVRS VOTER POINTS (as of 3/22/22)
- SVRS VOTER POINTS (as of 3/22/22) - Outside County Mismatch
- Geo ELECTION DISTRICTS
- US Congressional 2021
- WV Senate 2021
- WV House 2021
- Magisterial 2022
- Precinct 2022
- E-911 Addressing Layers
- WVParcels
- Geo BOUNDARIES

Layer List (turn layers on /off)

# GIS Layers (G-SVRS Tool)

**GIS Layers.** The G-SVRS Tool makes available contextual GIS layers (E-911 addresses, tax parcels, jurisdictional boundaries, and census blocks) to verify that SVRS Voter Points are properly located and attributed. Background layers include street and aerial imagery base maps.

- **GEO Elections Layers.** Displays precincts, magisterial, state house, state senate, and congressional layers. Precinct layer visible on default view.
- **SVRS Point Layer.** Displays SVRS address geocoded points symbolized by spatial data precinct audit: Precinct SVRS-GIS Match (Green Dot), Precinct SVRS-GIS Mismatch (Red Dot), Match (Green Dots), or SVRS Outside County (Black Square with White Letter O). A grey circle with a question mark indicates an SVRS street match (not site match or to building footprint) and thus not accurate enough to determine a precinct mismatch type. An unmatched geocoded address (e.g., PO Box, rural address) is not shown.
- **E-911 Address Layers.** Displays E-911 addresses and street ranges.
- **Parcel Layer:** Displays parcel lines and owner information in Voting Widget when layer visible.
- **GEO Boundaries:** Boundaries for counties, incorporated places, and census blocks
- **Background Layers:** Various Street or Aerial Imagery base layers

# Geo-Validation (G-SVRS Tool)

*A GIS tool to the SVRS for assisting the County Clerks and the Secretary of State's Office in their redistricting efforts. Another objective is to assist those counties with limited access to GIS technologies as well as producing online mapping resources.*

## Geo-Validate **Voter Points** and **Geographic Boundaries**

- Validate Voter Points and Attributes
  - **Voter Precincts:** Review spatial data audit of precincts to ensure voters are assigned to the correct precinct.
  - **Reference Layers:** Use geospatial layers E-911 Addresses, Tax Parcels, and Aerial Imagery reference layers to validate Voter Point information.
  - **Site Address Geocode:** Update street and unmatched address errors (e.g., P.O. Boxes, Rural Addresses, incomplete addresses) to site address points such that every Voter Point is located within the correct building footprint. If necessary, coordinate with the local E-911 Office about the authoritative address for residents.
- Validate Geographic Boundaries (Election, Administrative, Statistical)
  - **Election Boundaries:** Review and ensure precinct and magisterial district boundaries on the map are correct and current.
  - **Administrative Incorporated Place Boundary:** Ensure incorporated place boundaries are correct and coincide with municipal precincts. Submit incorporated place boundary changed through [Census BAS](#) program. Refer to [WV BAS Updates](#) for past decade.
  - **Statistical Census Block Boundaries:** Use to identify and submit census block boundary suggestions to Census as part of the 2030 Census Redistricting Data Program.

# Geo-Enabled SVRS Tool

Use Tool to Geo-Validate SVRS Voter Points are in correct Precinct

The screenshot displays the WV Geo-Enabled SVRS Tool interface. At the top, the title bar reads "WV Geo-Enabled SVRS Tool" and includes navigation links for "GoVoteWV", "County Clerks", and "Help". A search bar is located at the top left, and a "Find Voter Info" widget is on the right. The map shows various voter points, with a red dot indicating a precinct mismatch. A "Toggle Layers" box highlights the "Voter", "Address", and "Parcel" layers. A "Voter Info Widget" box explains how to click on the map to display attributes for SVRS Voter Point, E-911 Address, Tax Parcel, Place Name, Voter Precinct, and Election Districts.

**WV Geo-Enabled SVRS Tool** GoVoteWV County Clerks Help

Find address or place

**Toggle Layers**  
On (Yellow) or Off (Blue)

**SVRS Voter Point**  
Precinct Mismatch  
(red dot)

**VOTER INFO WIDGET**  
Click on the map to display attributes for SVRS Voter Point, E-911 Address, Tax Parcel, Place Name, Voter Precinct, and Election Districts

**Find Voter Info**

Search for an address or locate on map

KNOLLVIEW ESTATES, 11 X

SVRS VOTER POINTS (as of 3/22/22)

GEO ELECTION DISTRICTS

E-911 Address Points

Tax Parcels

Incorporated Areas

WV County Assessor, WV Property Tax Division, WV

# Voting Info Widget or Popup

**Find Voter Info Widget:** Open the widget function and click the point of interest on the map. Select the Data Content Group of interest: Election Districts (on by default), Incorporated Place (activated if point in municipality), and SVRS Voter Point, E-911 Address, and Parcel data (Voter, Address, and Parcel content groups are activated if layers are turned on or visible).

**Popup Attribute Window:** Alternatively, click on the map frame and cycle through the Popup Info Attributes for Election District, Voter, Address, and Parcel layers.

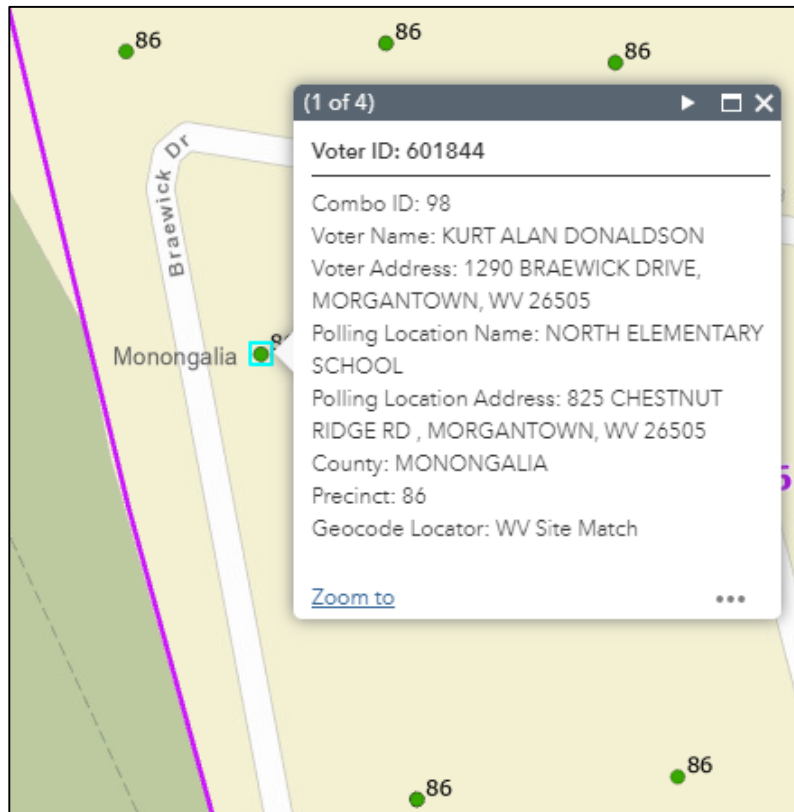
## Voting Info Data Content Groups:

- **GEO Election Districts.** If no Toggle Button Layers (Voter, E-911 Address, and Parcel) are turned on, then the election districts (precincts, magisterial, state house, state senate, congressional) are listed for the map location.
- **SVRS Voter Point.** If the Voter Layer is visible, then the SVRS voter point withing 100 feet of the map point are selected. SVRS Voter ID, Voter Name, and Voter Address attributes are displayed.
- **Tax Parcel.** If the Parcel Layer is visible, then the tax parcel owner and link to the WV Property Viewer are displayed.
- **E-911 Address.** If the Address Layer is visible, then site and street address matches are displayed. Search buffer is narrower the more zoomed in.
- **Incorporated Place** (Voter Info Widget Only). Name of municipality displays if location within an incorporated area.

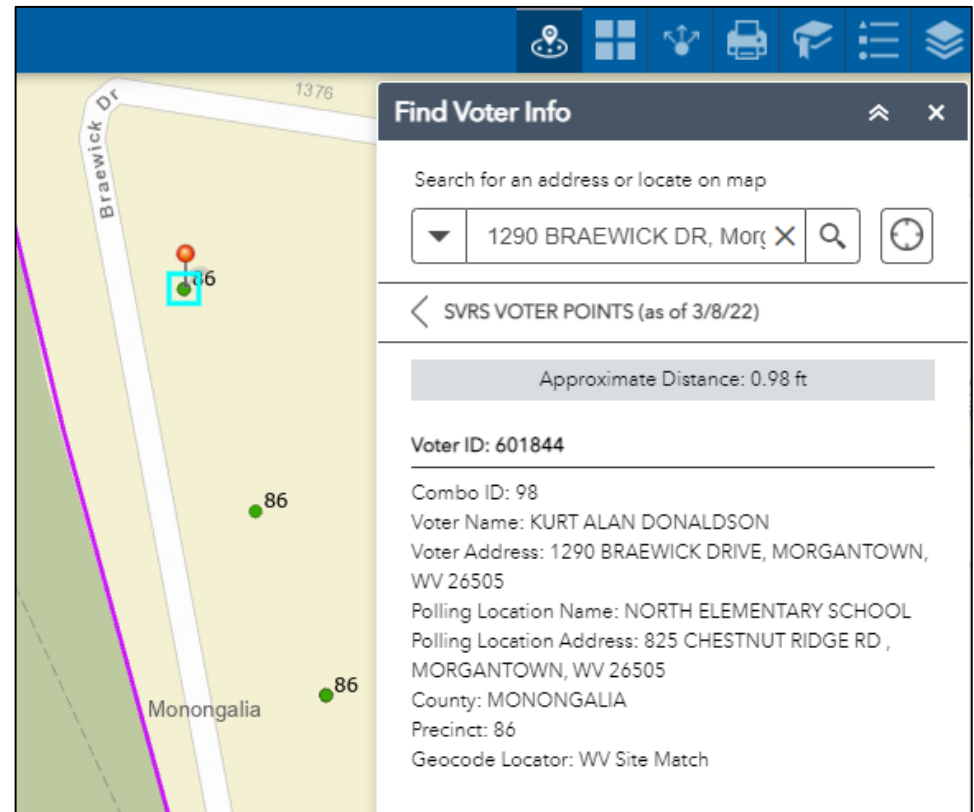
# Voter Point Info (G-SVRS Tool)



Popup Window Function



Voter Info Widget 

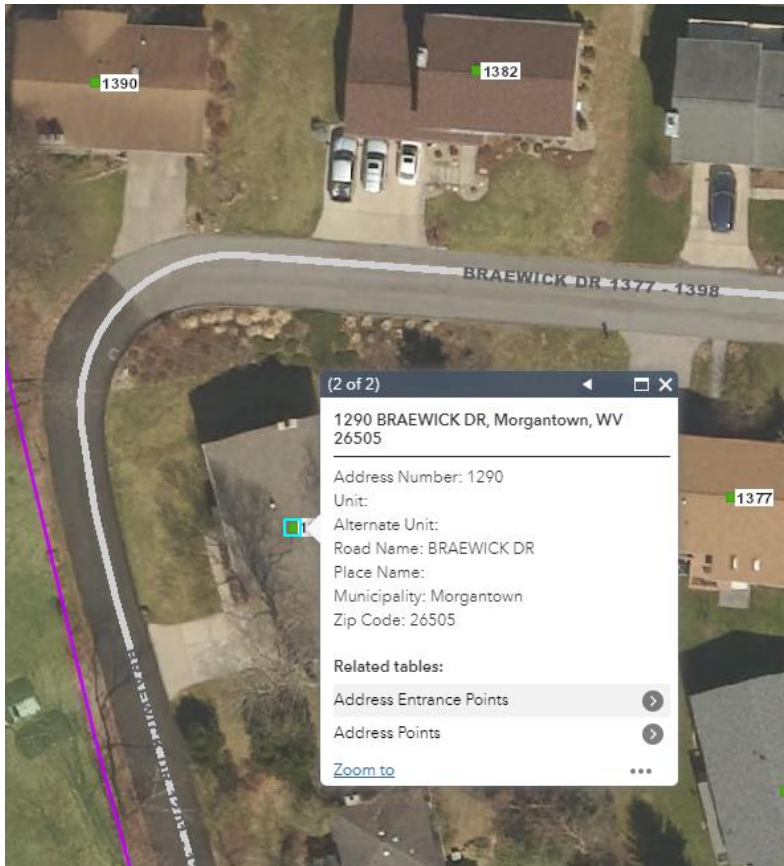


View **Voter Point** information two ways: Popup Window Function or Find Voter Info Widget

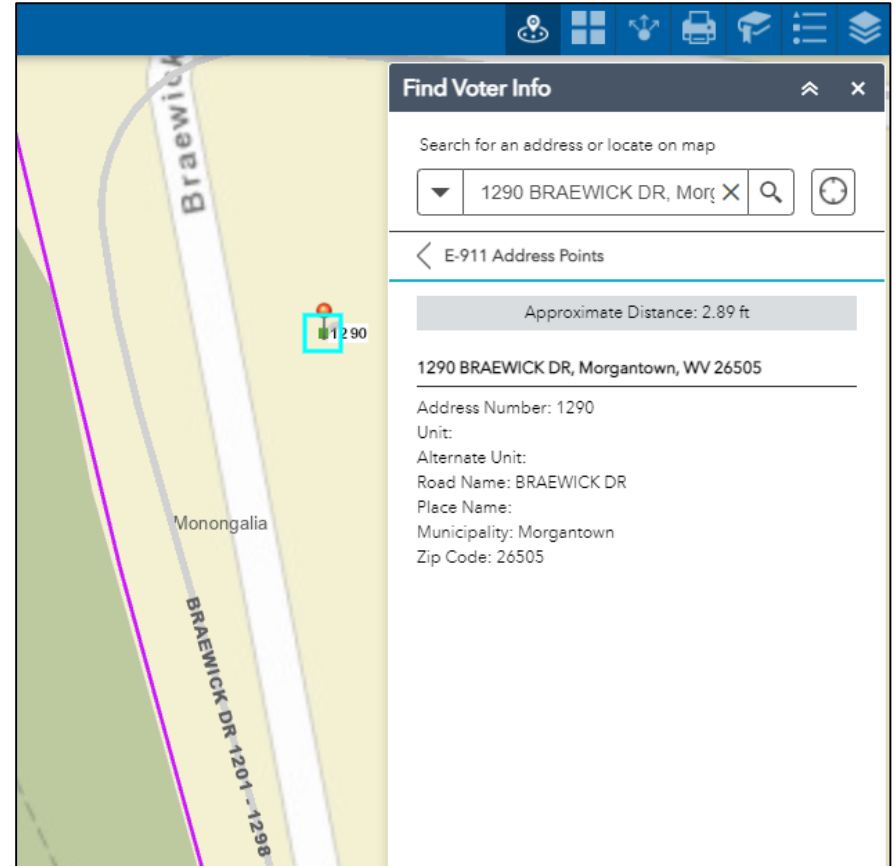
# E-911 Address (G-SVRS Tool)



Popup Window Function



Voter Info Widget



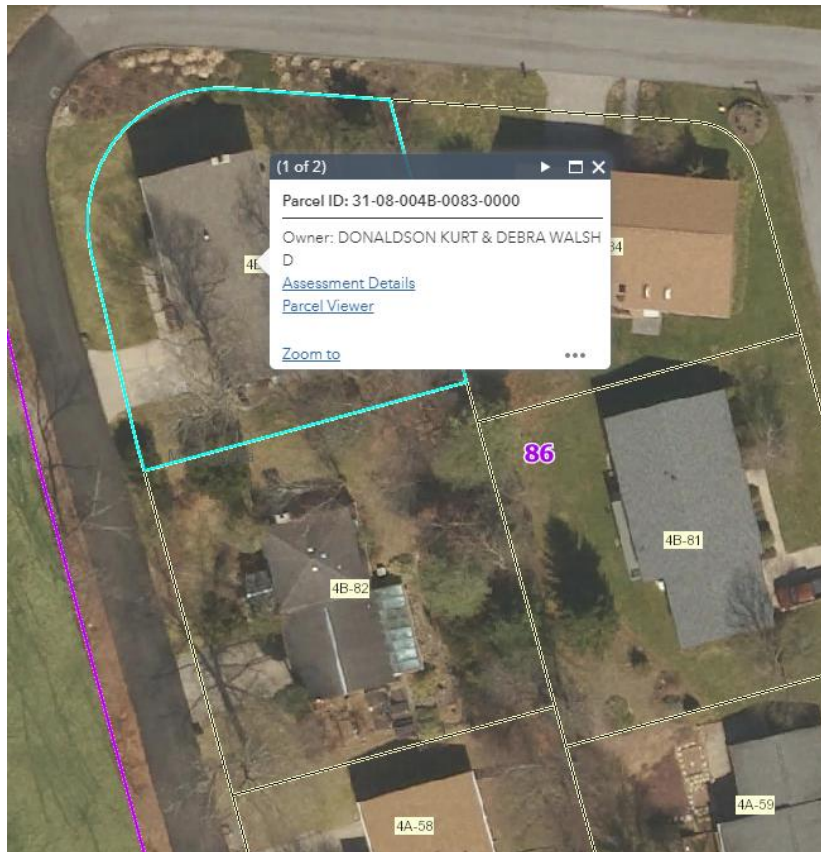
View **E-911 Address** information two ways: Popup Window Function or Find Voter Info Widget



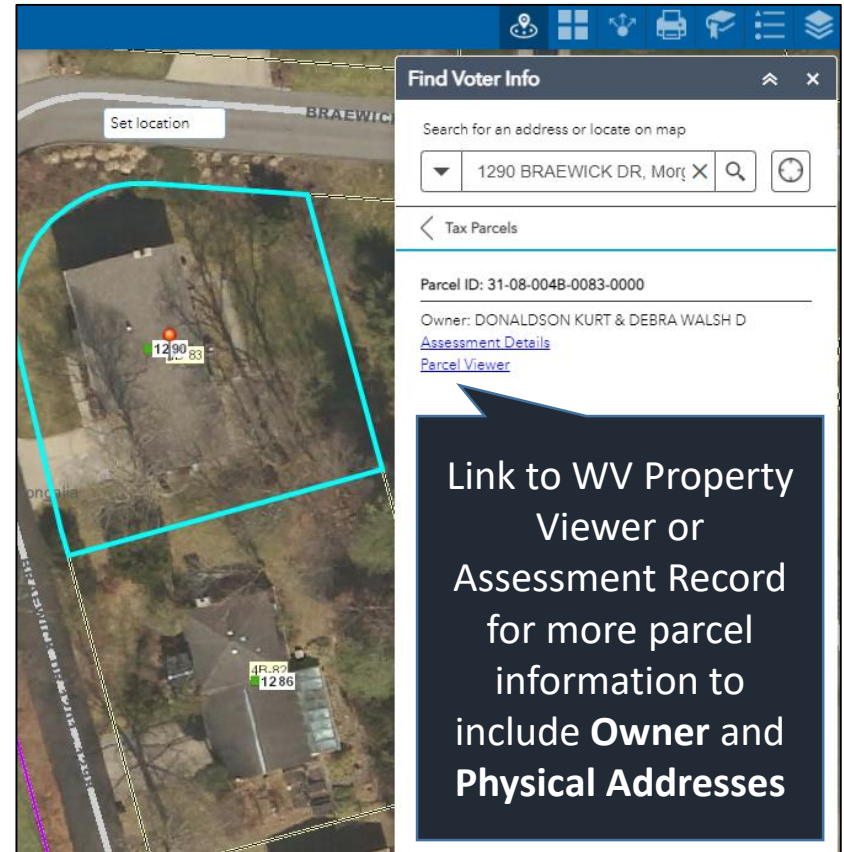
# Tax Parcel (G-SVRS Tool)



Popup Window Function



Voter Info Widget



View **Tax Parcel** information two ways: Popup Window Function or Find Voter Info Widget

# Map Tips (G-SVRS Tool)

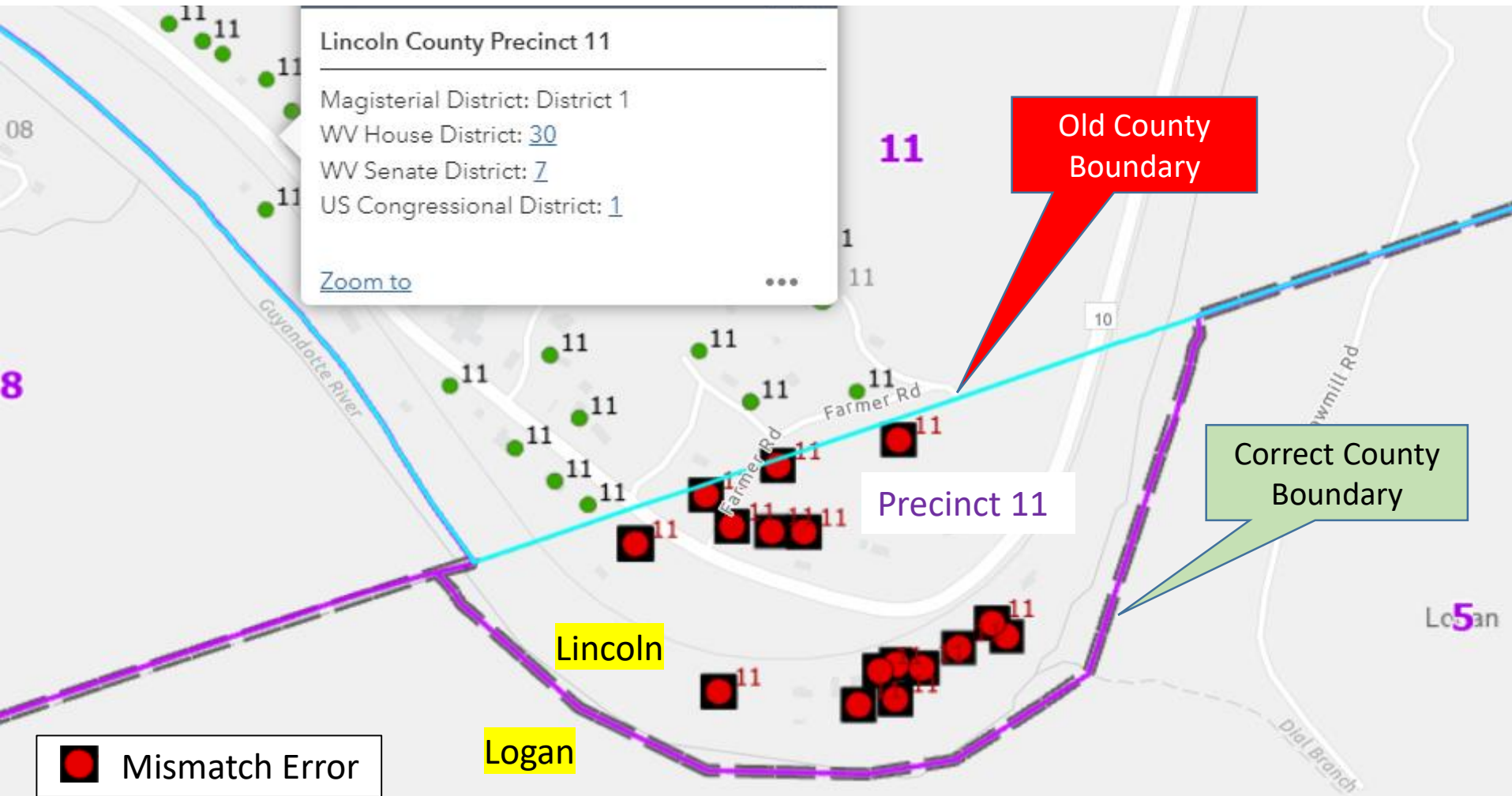
*Visualize and Geo-Validate **Voter Points** and **Geographic Boundaries***

- **Improve Layer Display Performance.** Toggle off data layers when navigating (zoom in, zoom out, pan) to area of interest to quicken display rendering of map layers.
- **Display Attribute Information.** The **Popup Window** and **Find Voter Info** functions display attribute information only if the Voter, Address, and Parcel layers are visible.
- **Shared Map Link:** Use the **Shared Link** function to share map location of interest to others. Shared links can be done by the G-SVRS Tool function or programmatically. Example shared links for 1290 Braewick Drive, Morgantown, WV:
  - URL with Long./Lat. Coordinates, Marker, Zoom Level 17:  
<https://www.mapwv.gov/svrs/?marker=-79.957363;39.663569;&level=17>
  - URL with Address Coordinates:  
<https://www.mapwv.gov/svrs/?find=1290%20Braewick%20Drive,%20Morgantown,%20WV>
- **Background Layers:** Select various street and imagery basemap from the **Background Gallery** function.
- **Apply Transparency to Incorporated Place Layer:** Set the transparency level of the group Geo Boundaries layer in the **Layer List** function to make the polygon shade Incorporated Areas less opaque.
- **Clear Web Cache:** Reset or [clear the web cache](#) if online layers are not displaying properly

# Jurisdictional Boundaries (G-SVRS Tool)

**Precinct Mismatch Errors will result if County or Incorporated Place boundaries are incorrect**

The Lincoln-Logan county boundary changed by the [2020 BAS](#) was not correct for the 3/22/2022 spatial audit, resulting in mismatch and outside county precinct errors for voter points in Lincoln County [Precinct 11](#). The GIS boundary has been updated in the G-SVRS Tool, so the precinct mismatch errors should be corrected when the next spatial audit is performed.



# Future Directions

## G-SVRS Tool Functions

- **Authentication Log-on.** Investigate login feature to authenticate access to G-SVRS Tool.
- **Modify Voter Point Location.** If an authorized user believes that the given geopoint of the address is incorrect, the user can drag the geopoint to the correct location on a map, and therefore assign a new geopoint for a given address. District assignment information is corrected in the SVRS.
- **Modify Flagged Voter Records.** Flagged geocoded site points in error (e.g., voter point at county border) can be denoted with an exception status to override the geocoding status.

## G-SVRS Tool GIS Layers

- **Census Boundary Layer.** Add U.S. Census County Boundary layer to compare with county boundary from 1:24,000 scale USGS topographic maps.
- **Polling Station.** Add polling stations from SVRS to Layer List and map.
- **Apartment Units.** Improve address features to more easily distinguish multiple units located in apartment buildings

## GoVoteWV Online Voter Tools

- **Online Voter Tools.** Explore integrating GIS technologies with [GoVoteWV](#) online voter tools on the Secretary of State's website

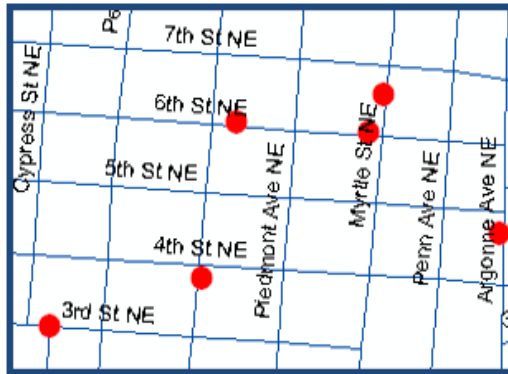
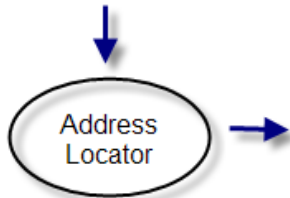
## Address Geocoding

- Improve accuracy of Geocode Locators
- Provide address mismatch lists to County Clerks and E-911 Offices

# Geocoding (Address Matching)

**Geocoding.** Geocoding, or address matching, is the computational process by which a physical address is converted into geographic coordinates, which can be used for a variety of mapping applications. The most highly accurate and precise geocode you can return is at the address point that is within the building footprint. Created by the WV GIS Technical Center, a composite locator of public and commercial address layers geocodes voter points.

customers			
	NAME	ADDRESS	CITY
▶	Ace Market	1171 PIEDMONT AVE NE	ATLANTA
	Andrew's Gasoline	1670 W PEACHTREE ST NE	ATLANTA
	AP Supermarket	4505 BEVERLY RD NE	
	Atlanta Market	241 16TH ST NW	ATLANTA



[Source Esri](#)

**Address Match Types and Reports.** Voter addresses are matched or unmatched based on geocode scores above the minimum match score. Geocoded results are classified by the *Locator Type* (WV Master Address file, Esri) and *Locator Role* (site point address, street address range, parcel, etc.)

- *Site Match:* Match to **Site** address point. The location match ideally is within building footprint.
  - *Site Match Outside County:* Voter records *site*-matched outside the county.
- *Street Match:* Match to the **street** address range but not pinpointed to the building location. A GIS file of street address matches can be provided for counties to improve the address matching of these voter records.
- *Unmatched Records:* Voter records could not be geocoded or geospatially pinpointed

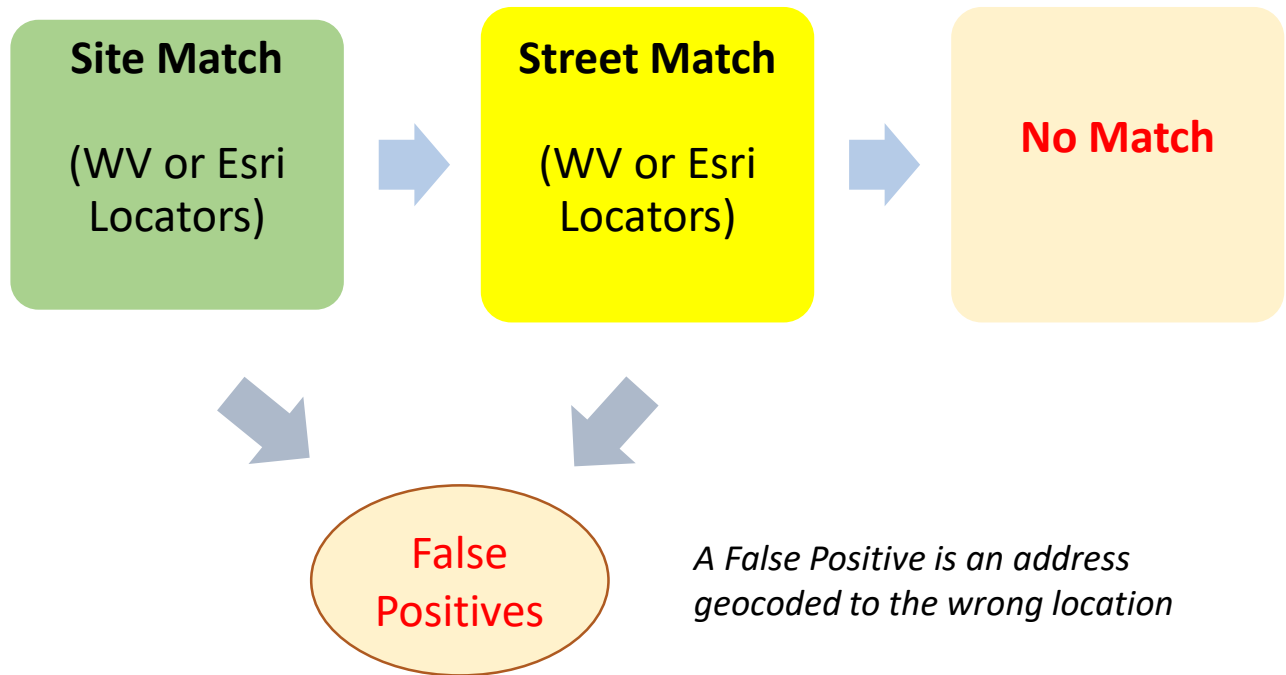
[Geocoding Definitions](#)

[Geocode Match Report Example](#)

# WV Geocoding Process

## Geocode Process Sequence

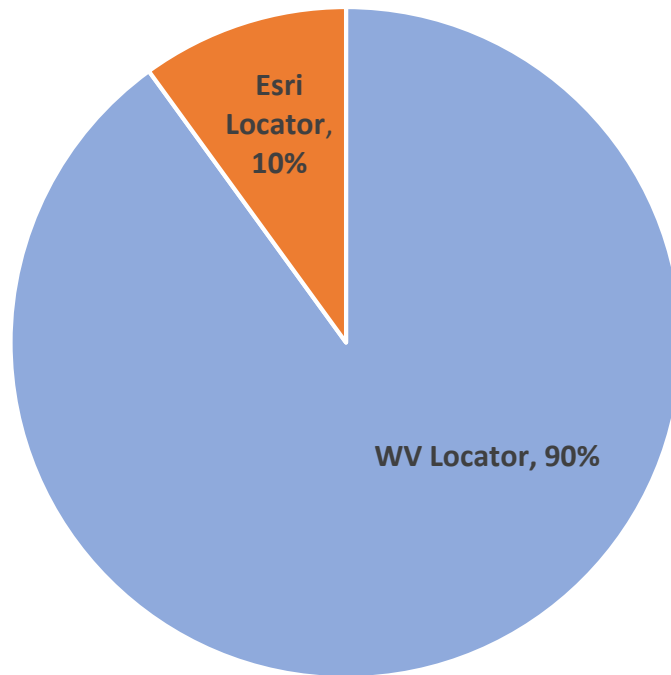
- 1) Clean and standardize address formats
- 2) Geocode all addresses with WV Locator address points using 90% confidence level
- 3) Geocode unmatched addresses with Esri Locator address points using 75% confidence level
- 4) Geocode unmatched addresses with WV Locator address street ranges using 90% confidence level
- 5) Geocode unmatched addresses with Esri Locator address street ranges using 75% confidence level



# Geocoding Locators

The composite locator combines geocoding results from both the **West Virginia** (public) and **Esri** (commercial) address lists

Composite Locator



- 90% of address matches are from the WV Locator
- 10% matches from the Esri Locator

# Override False Positives

Site geocodes that are “false positives” or geocoded to the wrong precinct can be overridden by providing a user-defined file with the voter information below

First check with...

- SVRS: Clean and standardized address input into SVRS
- E-911 Office: Current and accurate E-911 addresses have been uploaded by your County E-911 Office to Statewide Addressing File
- WVGISTC: Not an issue that can be resolved by geocoder

Voter ID	Geo Precinct	SVRS Precinct	Address	Latitude of correct location	Longitude of correct location	Note
<b>38444</b>	1	4	84 Bells Drive, Nitro, WV, WV	<b>38.288530</b>	<b>-81.68883</b>	Bad Geocode
<b>322</b>	1	4	105 Sandstone Dr, Eleanor, WV	<b>38.238530</b>	<b>-81.68996</b>	Bad Geocode
<b>8739</b>	1	6	200 Midland Trail, Hurricane, WV	<b>38.354444</b>	<b>-81.72233</b>	Outside County point is valid

Update G-SVRS Tool by...

- Highlight site match exceptions on Precinct Mismatch Tabular Report
- Add correct X,Y coordinates with Display Coordinate function to end of Precinct Mismatch Report
- Use Edit SVRS Widget (in development) to mark exceptions and update X,Y coordinate



# Geocode Exceptions

Use the **Display Coordinate** function to copy decimal degree Latitude and Longitude coordinates to Exception List

The screenshot displays a web-based geocoding application interface. At the top, there is a search bar with the placeholder text "Find address or place" and a magnifying glass icon. Below the search bar are three buttons: "Voter" (highlighted in yellow), "Address" (blue), and "Parcel" (blue). The main area is a map showing several parcels. One parcel is highlighted with a red dot and labeled "25-2". A dark blue tooltip box is overlaid on this parcel, containing the text "Putnam County Precin..." and "1 of 7". At the bottom left, a coordinate display tool shows the coordinates "38.444685 -81.924895 Degrees" in a grey box, which is circled in red. A blue arrow points from this box to a dark blue callout box at the bottom right that says "Use Display Coordinate Tool to Copy Coordinates".

38.444685 -81.924895 Degrees

Use Display Coordinate Tool to Copy Coordinates

# Exceptions

Site geocodes that are “false positives” or precinct mismatch errors can be overridden by providing a user-defined file with the voter information below

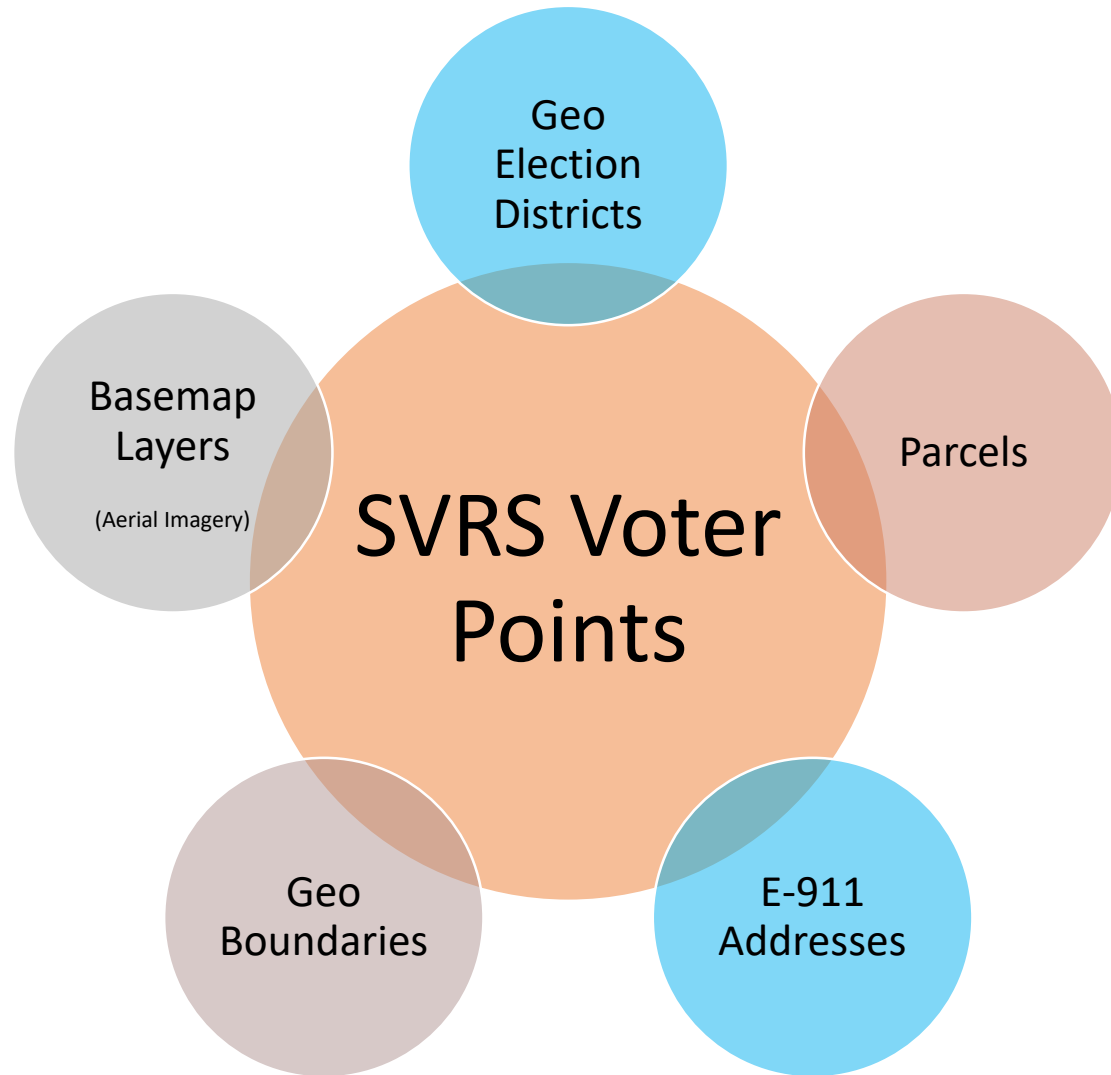
Voter ID	Geo Precinct	SVRS Precinct	Address	Longitude	Latitude	Note
38444	1	4	84 Bells Drive, Nitro, WV, WV	-81.68883	38.288530	Bad Geocode
322	1	4	105 Sandstone Dr, Eleanor, WV	-81.68996	38.238530	Bad Geocode
8739	1	6	200 Midland Trail, Hurricane, WV	-81.72233	38.354444	Outside County point is valid

A geocode returns a false positive if the address is geocoded to the wrong location

# Geo-Enabled SVRS

**Election and Reference GIS Layers  
that support G-SVRS Tool**

# GIS Layers for SVRS



**Election Districts** and **Addresses** are the most important GIS layers for *geo-enabling* elections

# GIS Layers for G-SVRS Tool

GIS					
DATA LAYER	SVRS	GEO LAYER	G-SVRS VOTER INFO WIDGET	GIS DATA SOURCE(S)	SVRS-GEO Mismatch Flag
VOTER POINTS	VOTER POINTS	VOTER POINTS			
Voter ID	SVRS-Voter ID	Geo-VoterPoint*	Voter Point	Statewide Voter Registration System (SVRS)	
Address	SVRS-Address	Geo-VoterPoint	Voter Point, E-911, Parcel	SVRS, E-911 Address (WVEMD), Parcels (WVPTD)	
Name	SVRS-Name	Geo-VoterPoint	Voter Point, Parcel	SVRS, Parcels	
ELECTION DISTRICTS	ELECTION DISTRICTS	ELECTION DISTRICTS			
Precinct	SVRS-Precinct	Geo-Precinct**	Election Districts	County Clerks / WVSOS	Yes
Magisterial	SVRS-Magisterial	Geo-Magisterial	Election Districts	County Clerks / WVSOS	Yes
State House	SVRS-WVHouse	Geo-WVHouse	Election Districts	State Legislature / WVSOS	Yes
State Senate	SVRS-Senate	Geo-WVSenate	Election Districts	State Legislature / WVSOS	Yes
Congressional	SVRS-Congressional	Geo-Congressional	Election Districts	State Legislature / WVSOS	Yes
BOUNDARIES	BOUNDARIES	BOUNDARIES			
Census Block		Geo_CensusBlock		Census 2020 (Statistical Boundary)	
Incorporated Place		Geo-Place	Incorporated Areas	Municipality-Census BAS (Legal / Administrative)	
County	SVRS-County	Geo-County		1:24K Scale Topo (Legal / Administrative)	Yes
BASEMAP GALLERY	BASEMAP GALLERY	BASEMAP GALLERY			
Street Background		Street		Esri Commercial Services	
Aerial Imagery		Aerial Imagery		Commercial, WVGISTC, Counties	

**Site Voter Addresses** can be validated with *statewide* **E-911 Address** and **Tax Parcel** GIS Layers

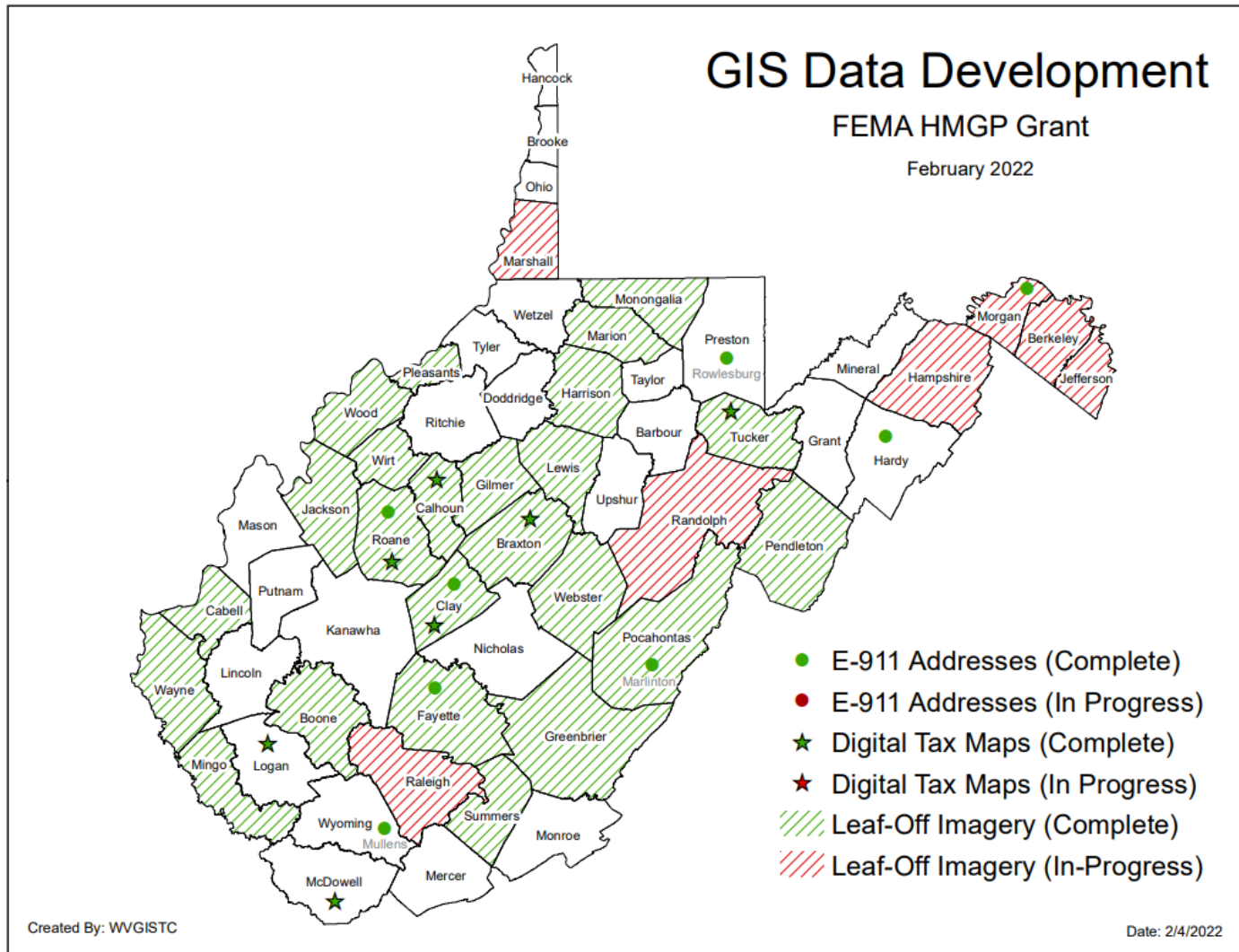
# GIS Layers

## **Data Development and Integration**

- **Local-Level Data Development**
- **State-Level Integration**



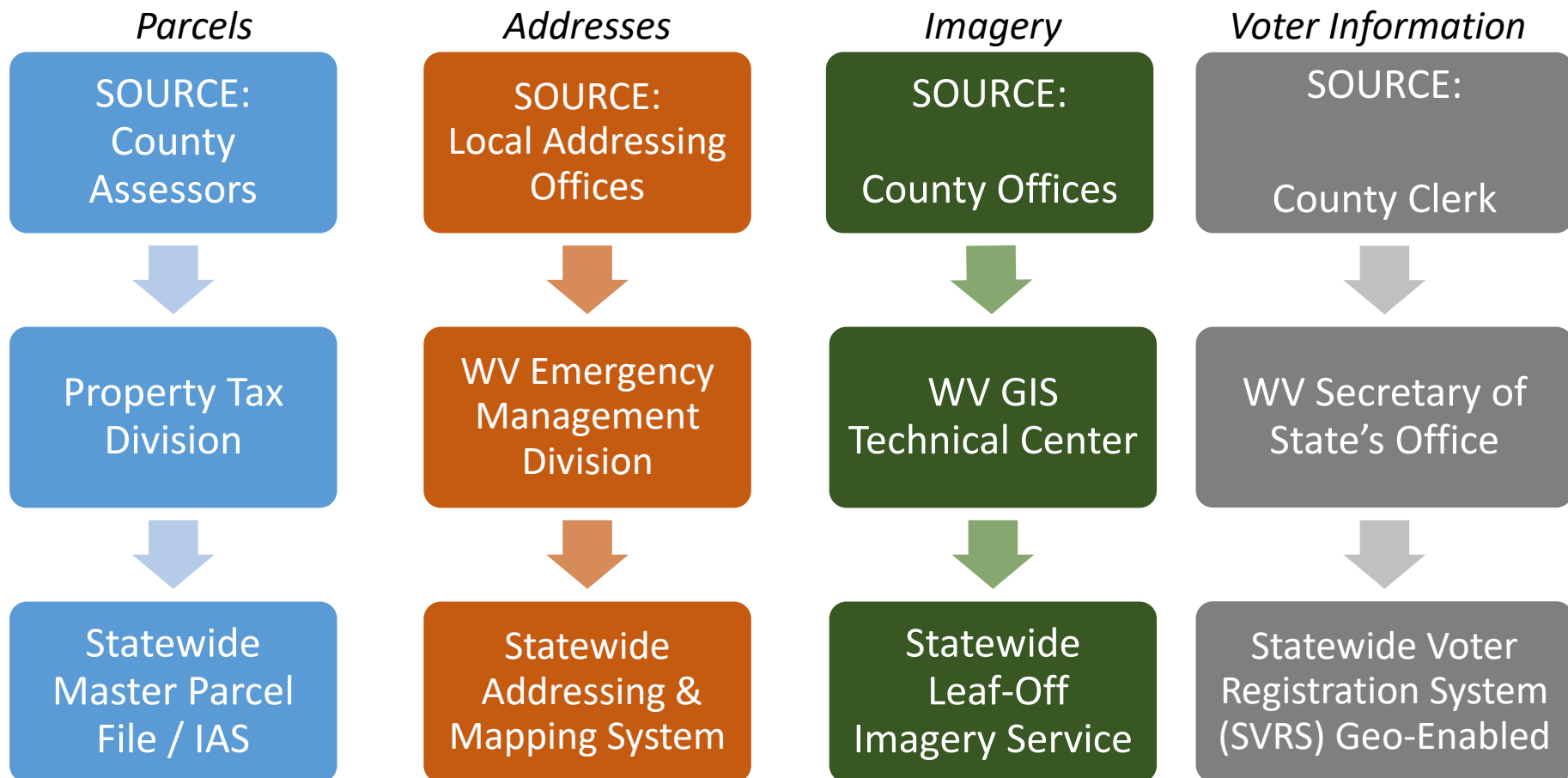
# GIS Data Development Projects



Recent grant-funded [GIS Data Development Projects](#) via statewide contracts for for [Addresses/Parcels](#) and [Leaf-off Aerial Imagery](#). Seed funding and state contracts are necessary to help disadvantaged counties.



# State-Level Integration



*State-level integration allows for statewide mapping products and services*

WVU GIS Technical Center creates web map services of these key mapping layers

# WV Addressing Stakeholders

## LOCAL GOVERNMENT

- County Clerks
- E-911 Address Directors
- County Assessors
- GIS Specialists and Mappers

## WV ASSOCIATIONS

- WV Association of County Clerks
- WV E-911 Council
- WV Association of Geospatial Professionals
- WV Broadband Enhancement Council
- WV Association of Counties
- WV Association of Assessors

## STATE GOVERNMENT

- WV Secretary of State's Office
- WV Emergency Management Division
- WV Division of Motor Vehicles
- WV Office of GIS Coordination
- WV GIS Technical Center
- WV Property Tax Division
- WV DHHR

## NATIONAL ORGANIZATIONS

- U.S. Census
- U.S. DOT
- U.S. Postal Service
- NSGIC
- NENA

## PRIVATE SECTOR

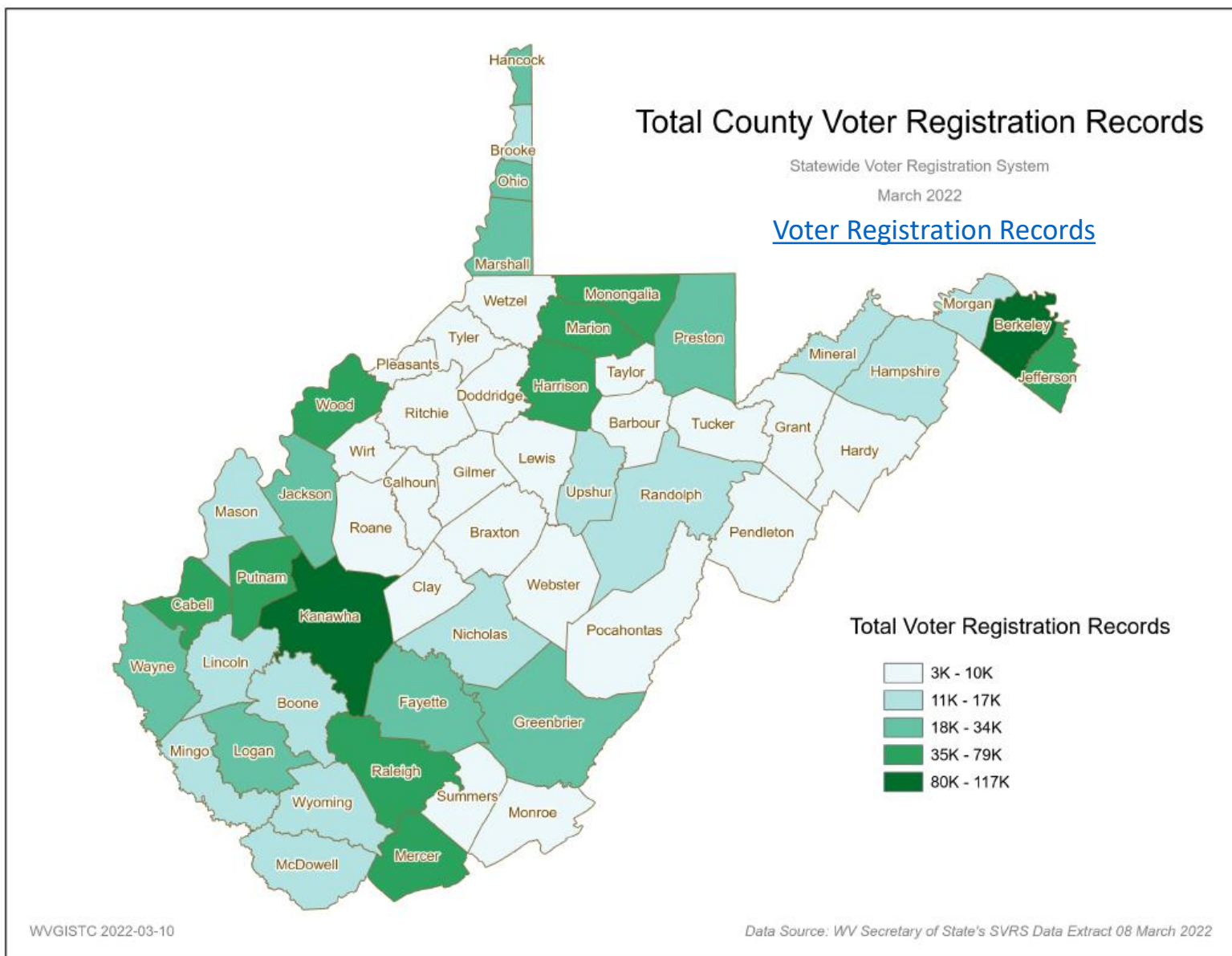
- GIS Professional Companies
- Address Vendors
- CAD Vendors
- Utilities

*Addressing standards/workflows are important for business/government services including*  
***Election Management Systems***

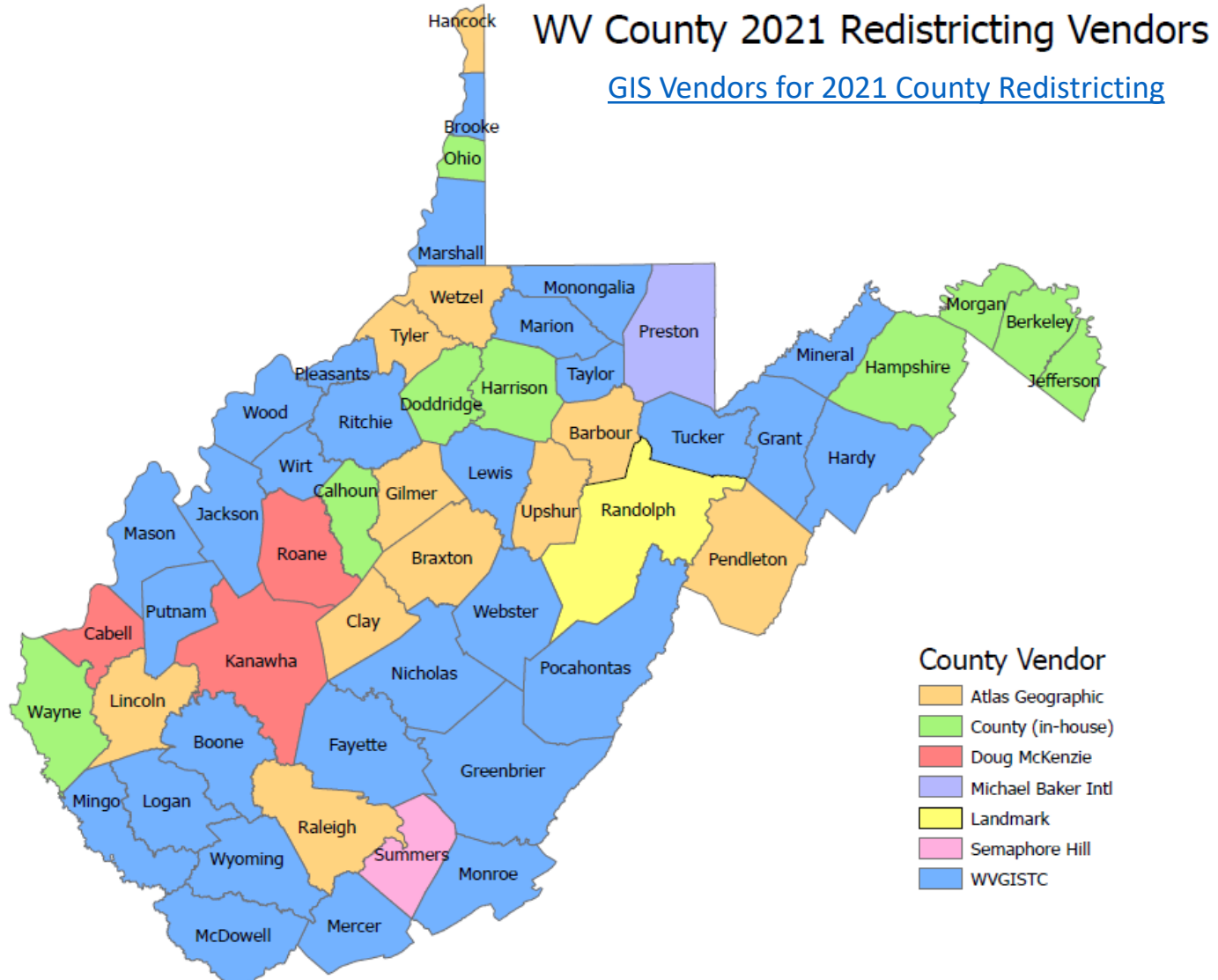
# Geo-Enabled SVRS

Other Notes

# Total Voter Registration Records



# 2021 Redistricting Vendors



# WV GIS Technical Center Contacts

Name	Email
Kurt Donaldson	<a href="mailto:kdonalds@wvu.edu">kdonalds@wvu.edu</a>
Eric Hopkins	<a href="mailto:eric.hopkins@mail.wvu.edu">eric.hopkins@mail.wvu.edu</a>
Kevin Kuhn	<a href="mailto:kevin.kuhn@mail.wvu.edu">kevin.kuhn@mail.wvu.edu</a>
Frank LaFone	<a href="mailto:frank.lafone@mail.wvu.edu">frank.lafone@mail.wvu.edu</a>
Shannon Maynard	<a href="mailto:smmaynard@mail.wvu.edu">smmaynard@mail.wvu.edu</a>
Johnna Murray	<a href="mailto:johnna.murray@mail.wvu.edu">johnna.murray@mail.wvu.edu</a>
Yibing Han	<a href="mailto:yibing.han@mail.wvu.edu">yibing.han@mail.wvu.edu</a>
Maneesh Sharma	<a href="mailto:maneesh.sharma@mail.wvu.edu">maneesh.sharma@mail.wvu.edu</a>