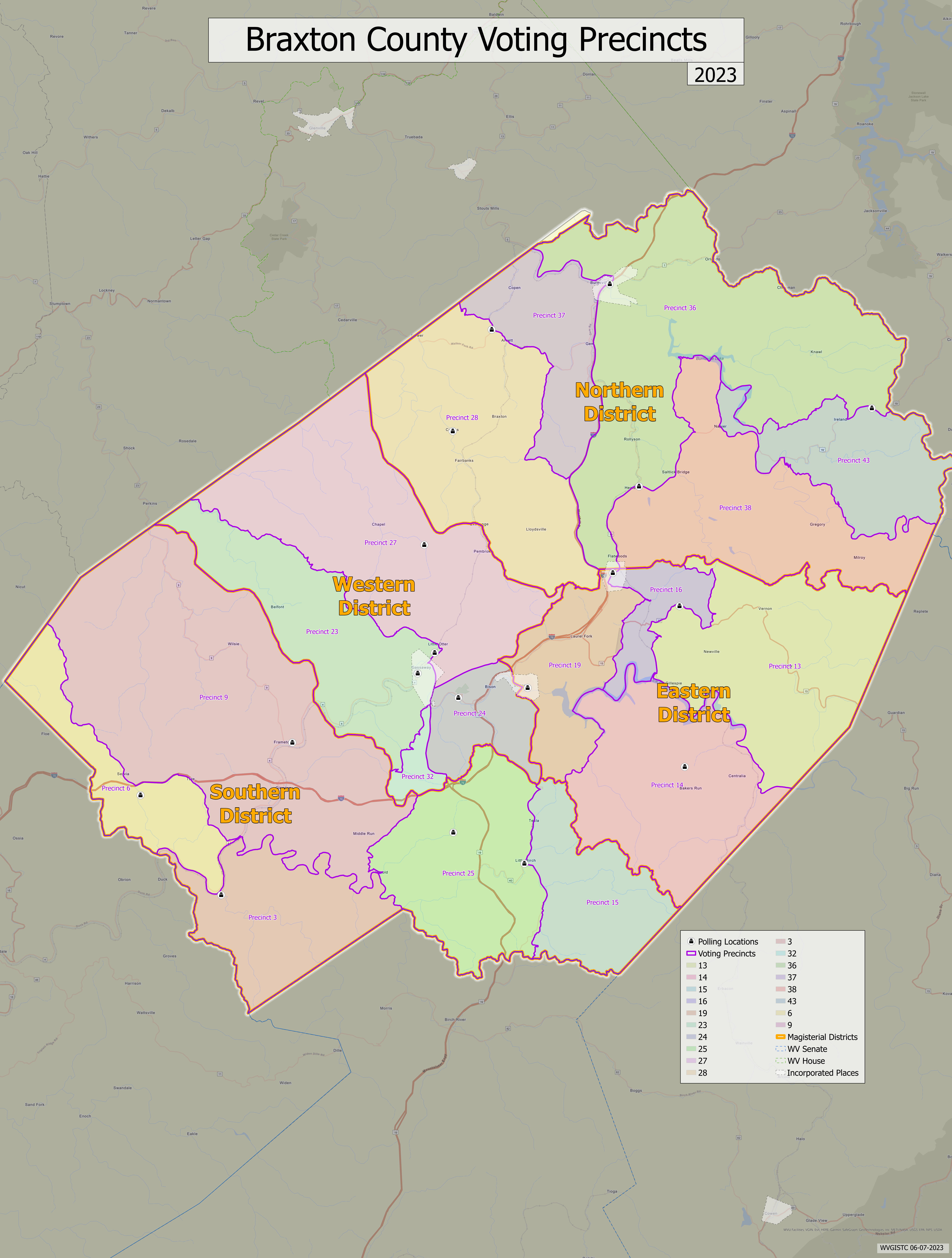


Braxton County Voting Precincts

2023



Northern District

Western District

Southern District

Eastern District

- Polling Locations
 - Voting Precincts
 - Magisterial Districts
 - WV Senate
 - WV House
 - Incorporated Places
- | | |
|--|-----|
| | 3 |
| | 32 |
| | 36 |
| | 37 |
| | 38 |
| | 43 |
| | 6 |
| | 9 |
| | 13 |
| | 14 |
| | 15 |
| | 16 |
| | 19 |
| | 23 |
| | 24 |
| | 25 |
| | 27 |
| | 28 |
| | 29 |
| | 30 |
| | 31 |
| | 33 |
| | 34 |
| | 35 |
| | 39 |
| | 40 |
| | 41 |
| | 42 |
| | 44 |
| | 45 |
| | 46 |
| | 47 |
| | 48 |
| | 49 |
| | 50 |
| | 51 |
| | 52 |
| | 53 |
| | 54 |
| | 55 |
| | 56 |
| | 57 |
| | 58 |
| | 59 |
| | 60 |
| | 61 |
| | 62 |
| | 63 |
| | 64 |
| | 65 |
| | 66 |
| | 67 |
| | 68 |
| | 69 |
| | 70 |
| | 71 |
| | 72 |
| | 73 |
| | 74 |
| | 75 |
| | 76 |
| | 77 |
| | 78 |
| | 79 |
| | 80 |
| | 81 |
| | 82 |
| | 83 |
| | 84 |
| | 85 |
| | 86 |
| | 87 |
| | 88 |
| | 89 |
| | 90 |
| | 91 |
| | 92 |
| | 93 |
| | 94 |
| | 95 |
| | 96 |
| | 97 |
| | 98 |
| | 99 |
| | 100 |