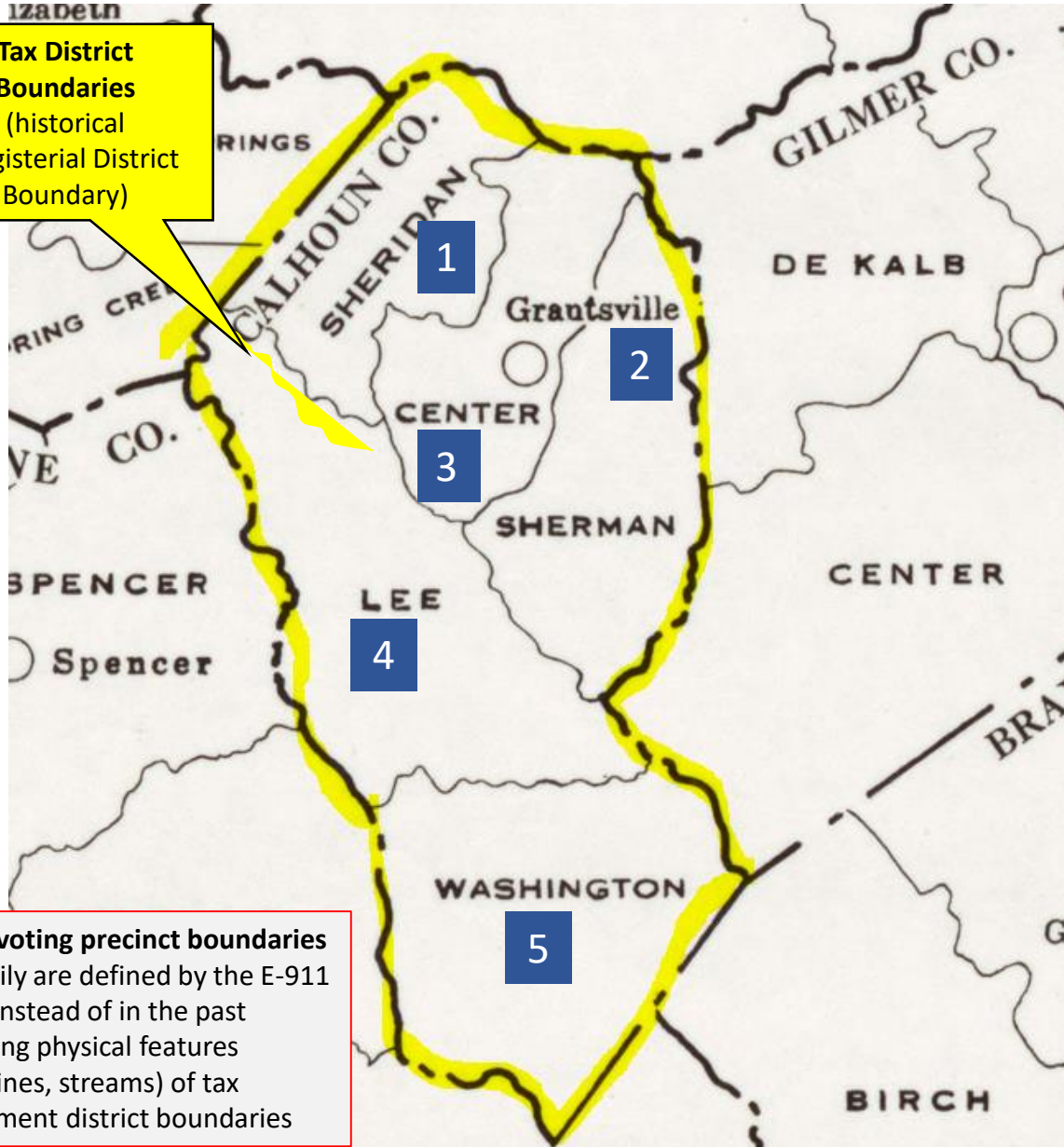


CALHOUN COUNTY: Election District Mapping

- Geo-SVRS Voter Match: Ensure **Voter Registration Site Points** are assigned to the correct geographic precinct. Refer to mismatch spreadsheet or red dots on G-SVRS Tool (www.mapwv.gov/SVRS). Consult with E-911 office about **invalid addresses** or **spatially inaccurate addresses** that cannot be mapped to the building footprint (less accurate street address match).
- Precinct Boundary Definition Factors:
 - **E-911 Addresses & Road Centerlines**
 - All addresses of smaller roads or roads in hollows/narrow valleys should be in a single voting precinct to minimize multiple road segment definitions in the SVRS
 - Street Geocodes: Geocode matches to street ranges are problematic for road precinct boundaries
 - **Incorporated Place Boundaries** should be accurate and match precinct boundaries
 - **Topographic Ridge Boundaries.** In rural counties, typically tax district and historical magisterial district line boundaries follow topographic ridgelines.
 - **Proximity to Polling Sites.** Voter point travel time/distance to polling site of precinct
 - **Census Blocks.** Follow existing census block edge boundaries if exist
- Voting Precinct Boundary Alignment Issues/No Gaps:
 - Precinct boundaries should align coincidentally with **USGS 1:24,000-scale county boundary** – not the less accurate Census boundary
 - Precinct boundaries should align coincidentally with **magisterial district lines**

CALHOUN COUNTY: PAST AND CURRENT MAGISTERIAL DISTRICTS

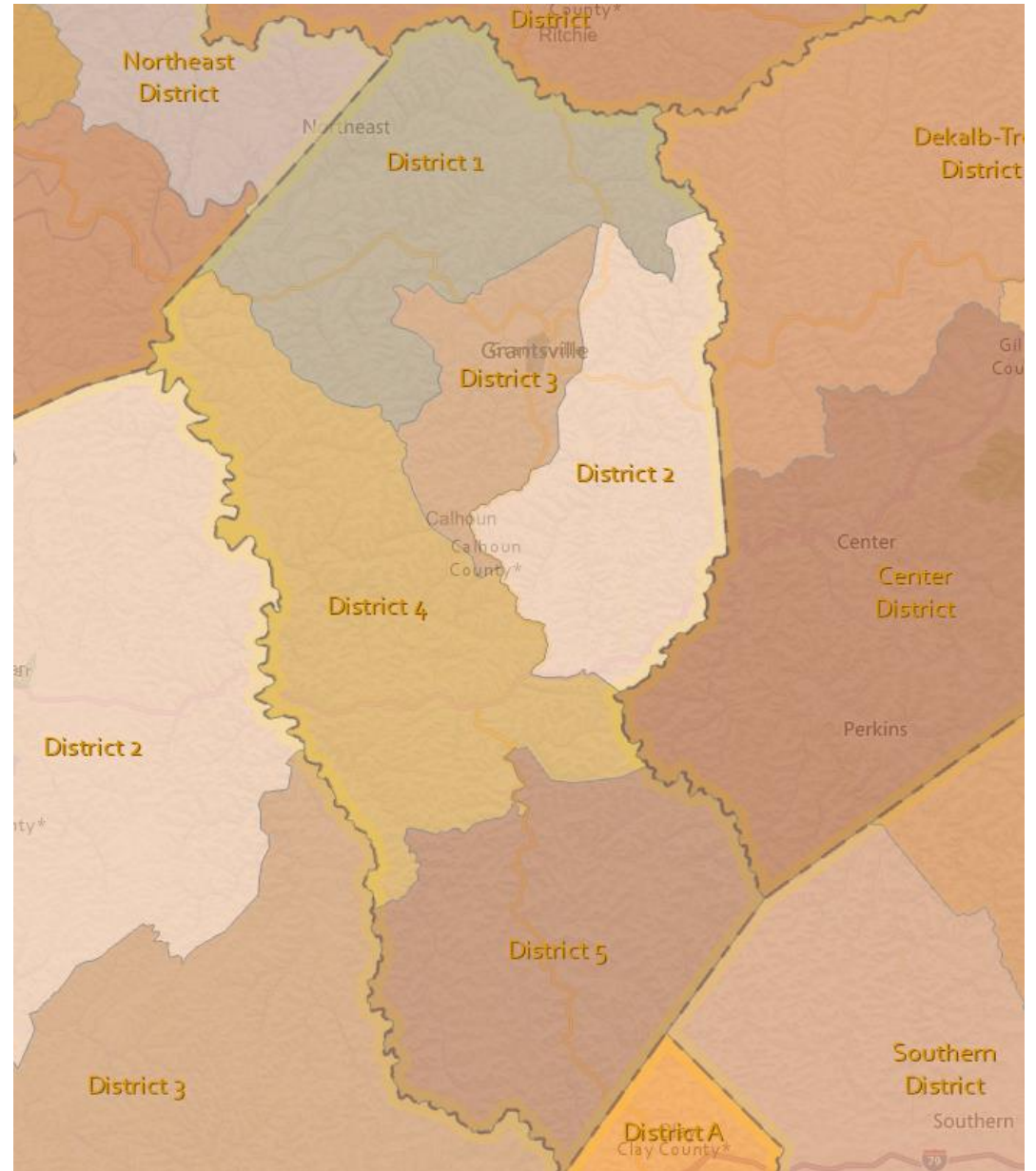
1970 Magisterial/Tax Districts



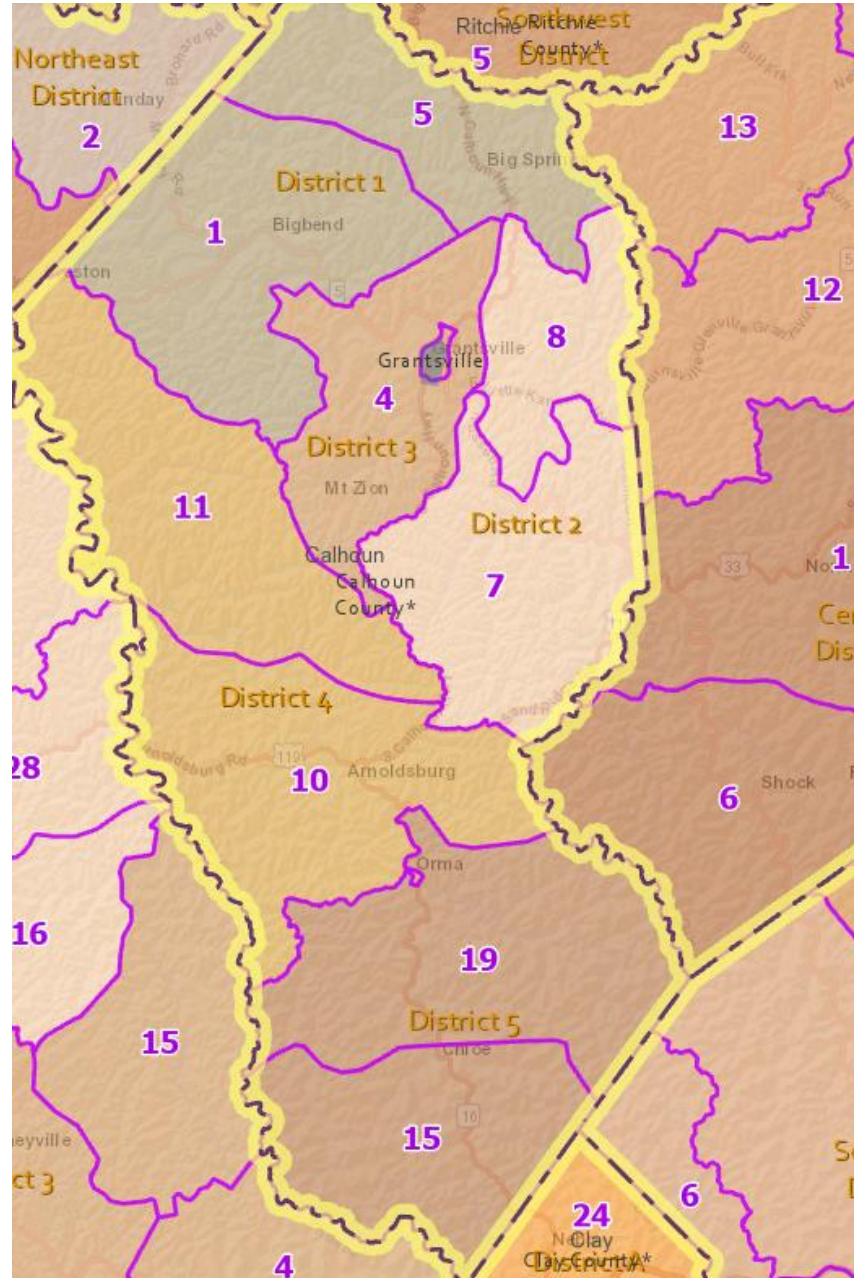
Tax District Boundaries (historical Magisterial District Boundary)

Today voting precinct boundaries primarily are defined by the E-911 roads instead of in the past following physical features (ridgelines, streams) of tax assessment district boundaries

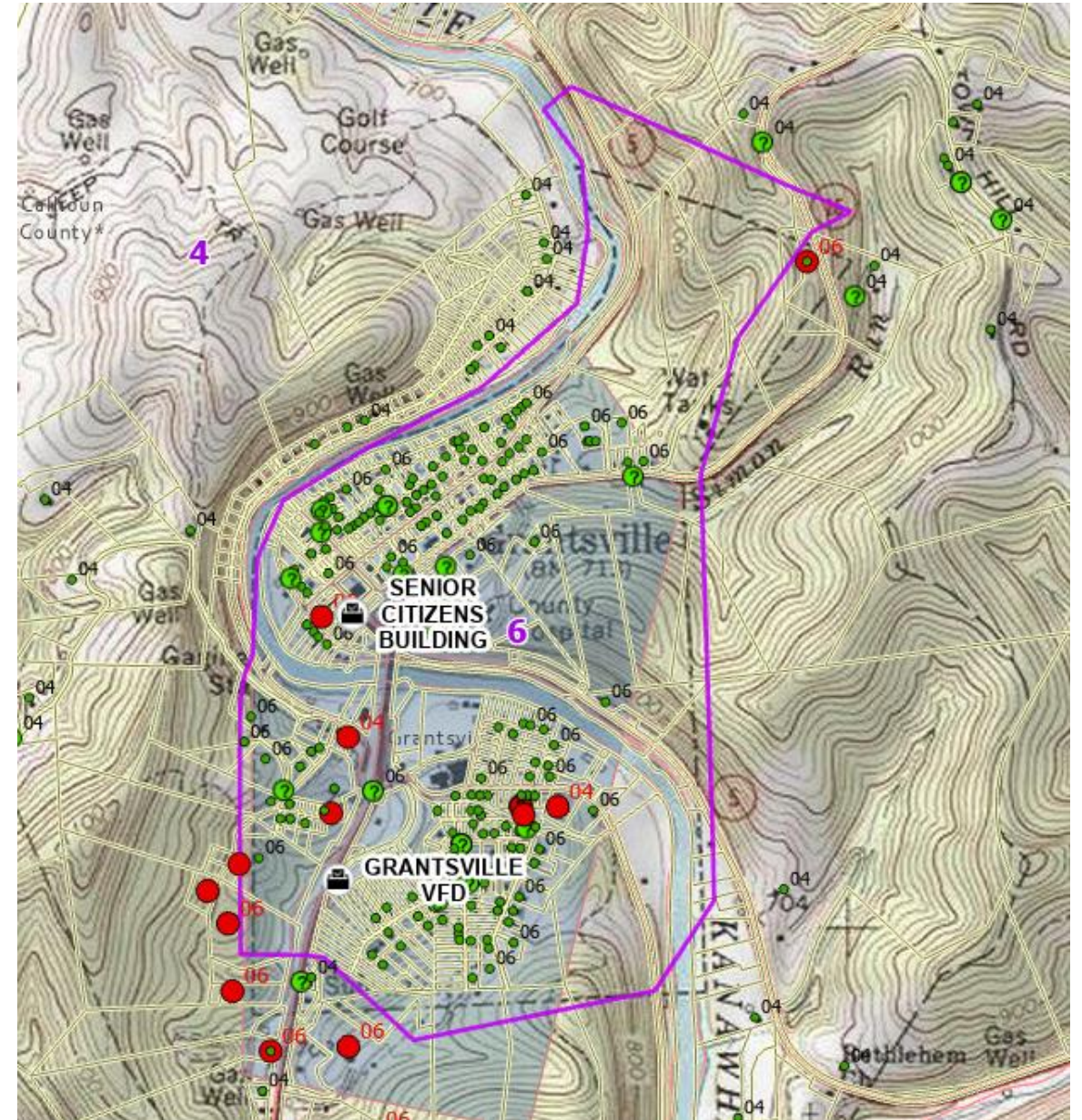
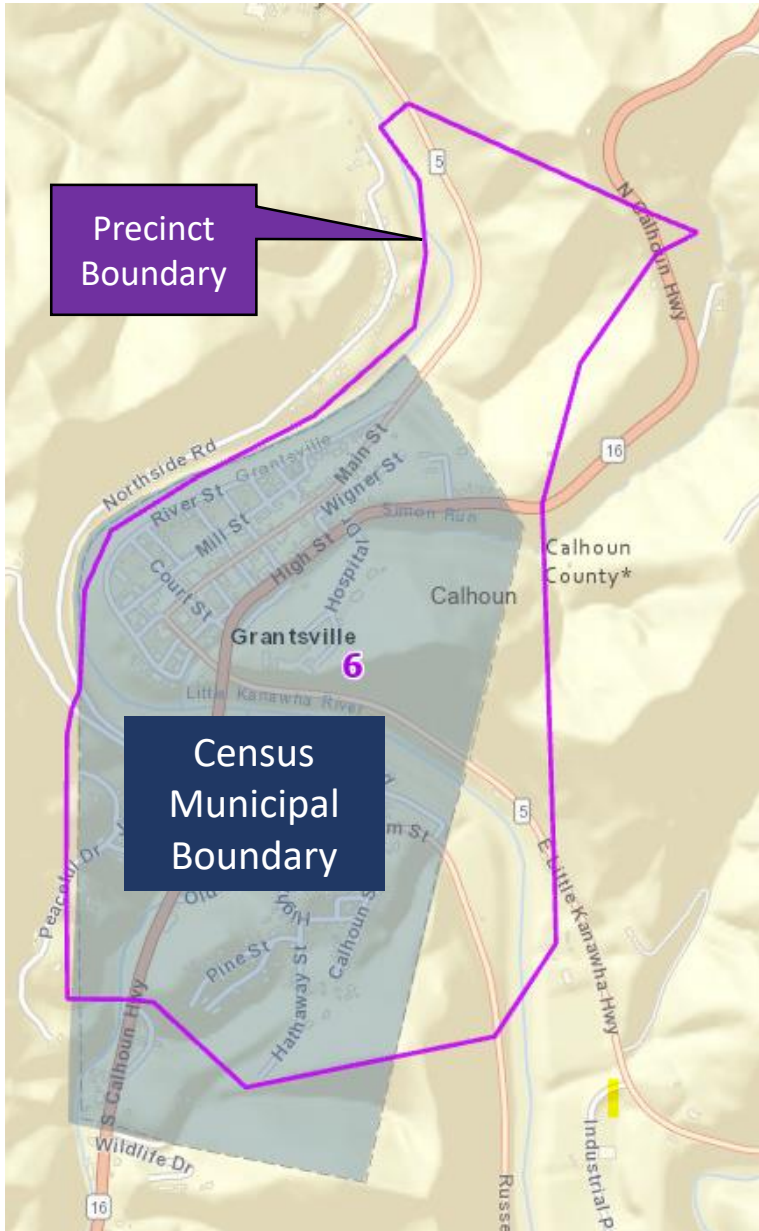
2023 Magisterial Districts



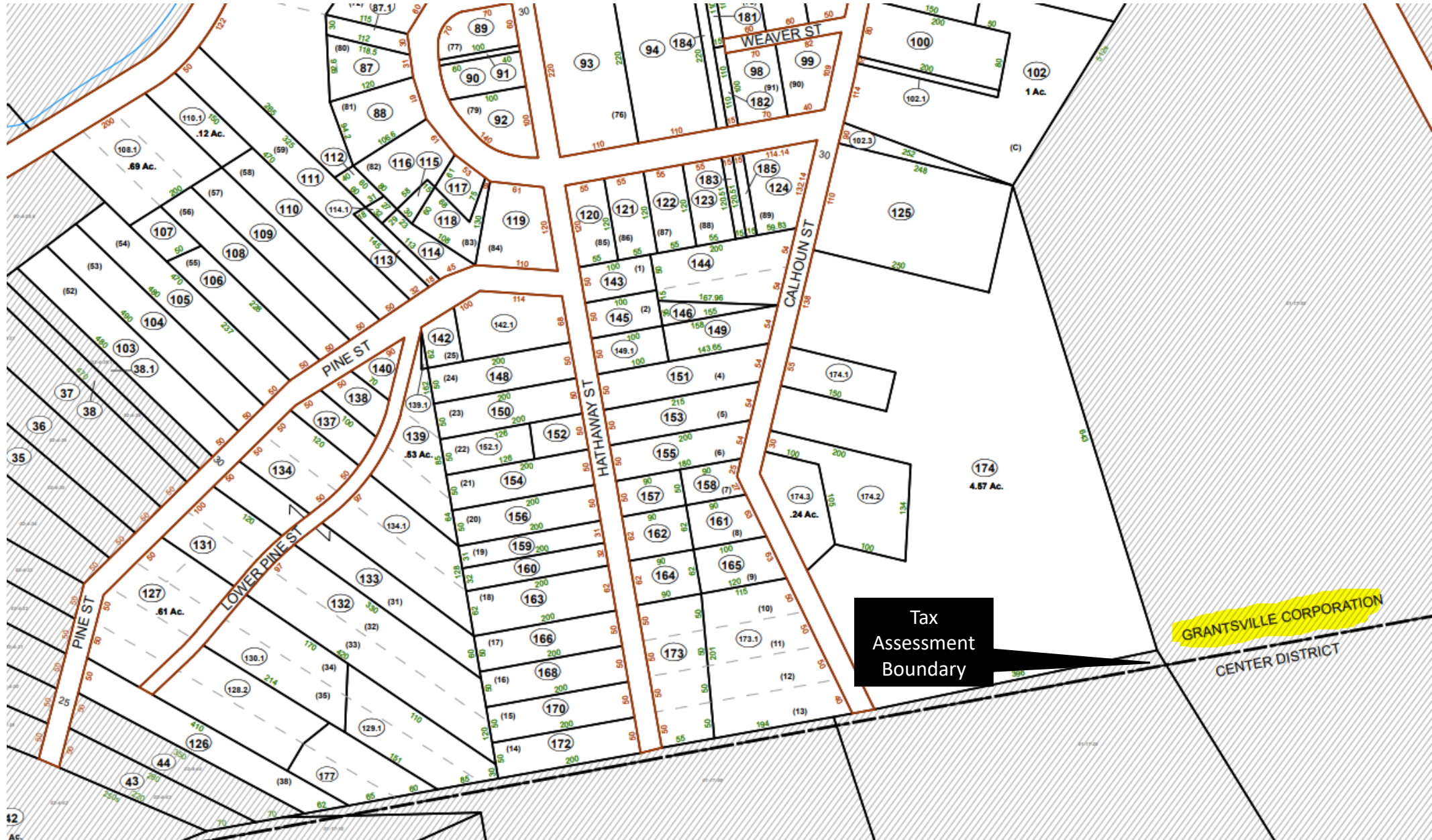
Voting Precinct & Magisterial Districts (Calhoun County)



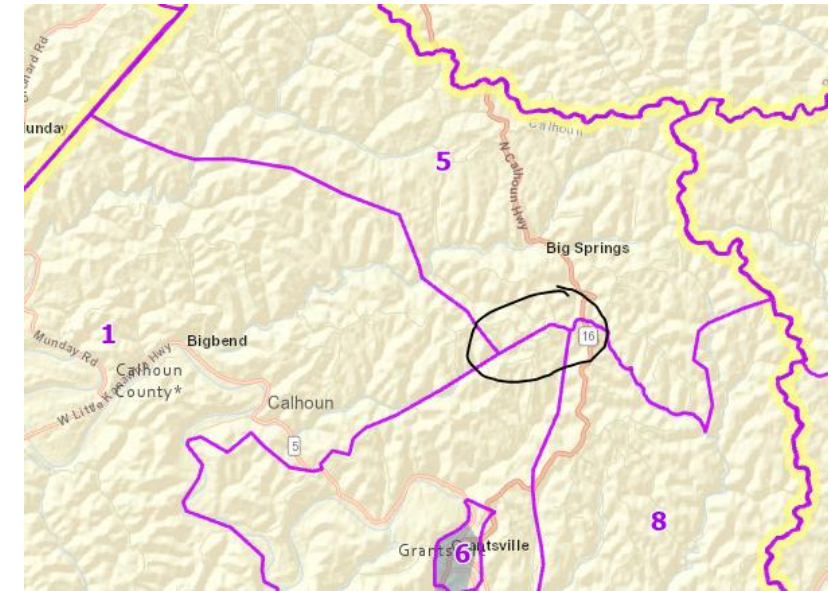
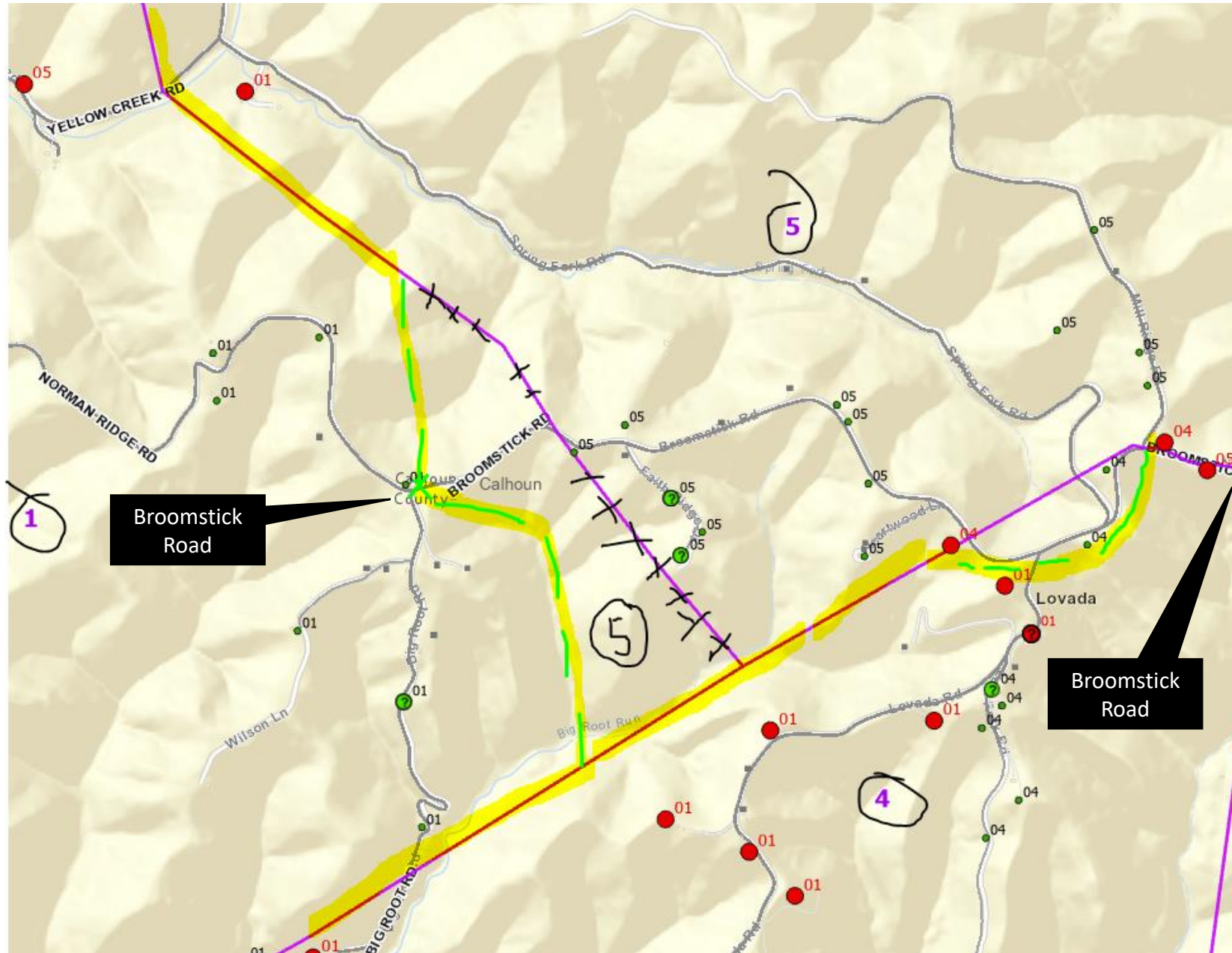
Precincts 6 Grantsville Corp. (Does not match Census or Tax District Bdrys)



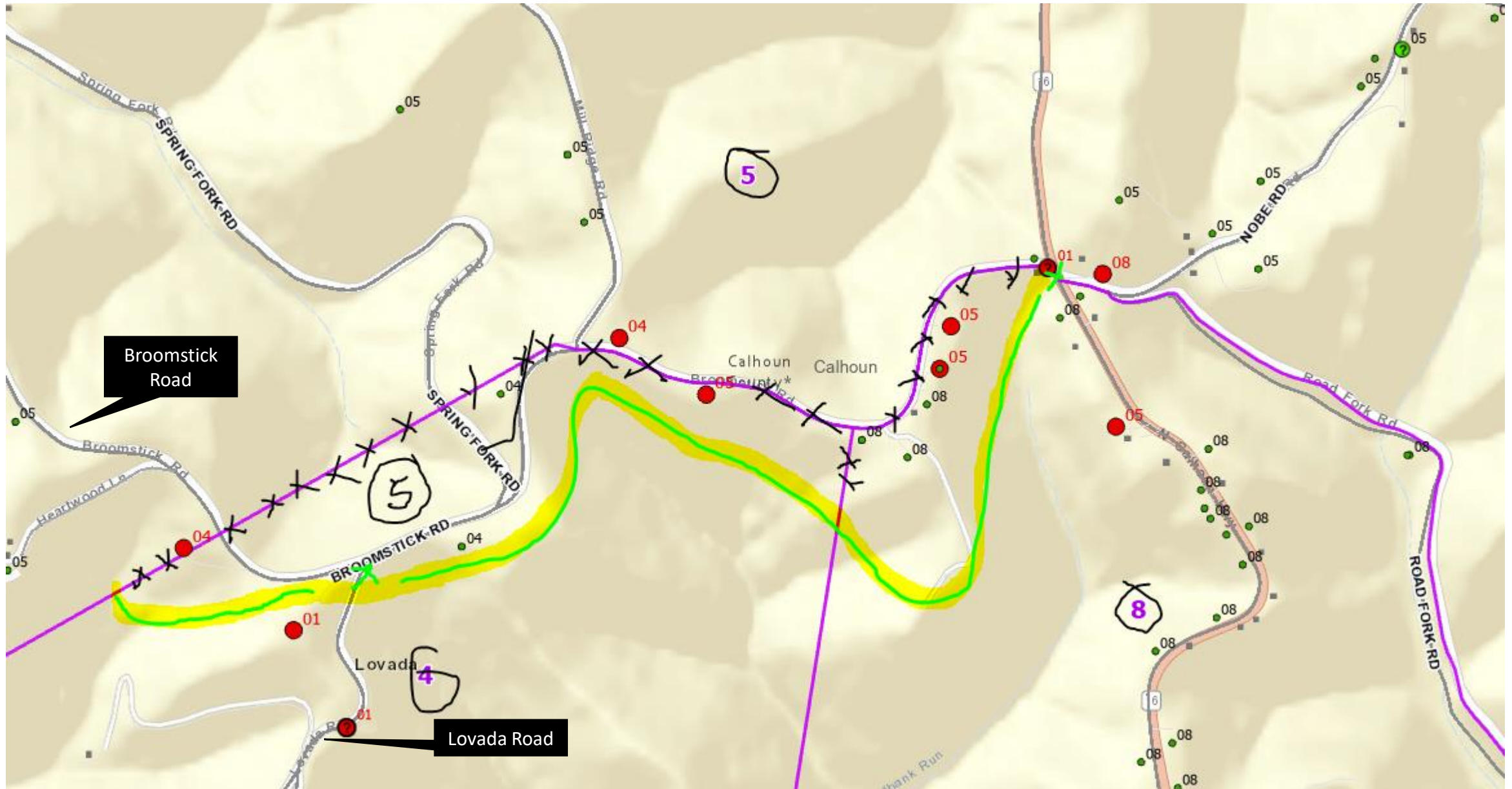
Precincts 6 Grantsville Corporation (Municipal boundary different on tax maps)



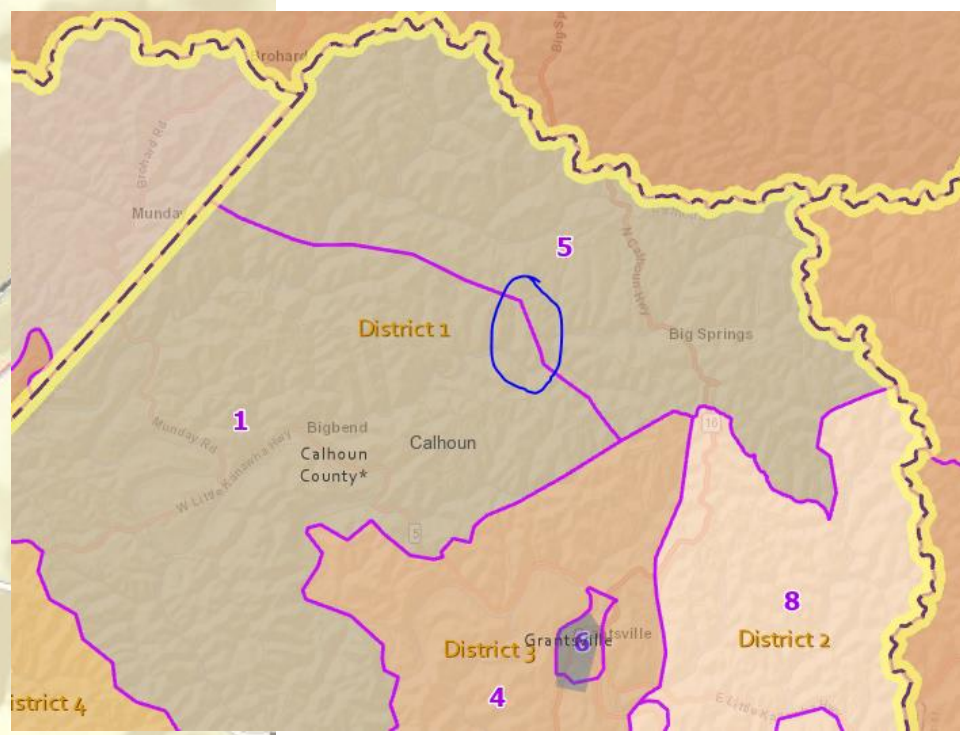
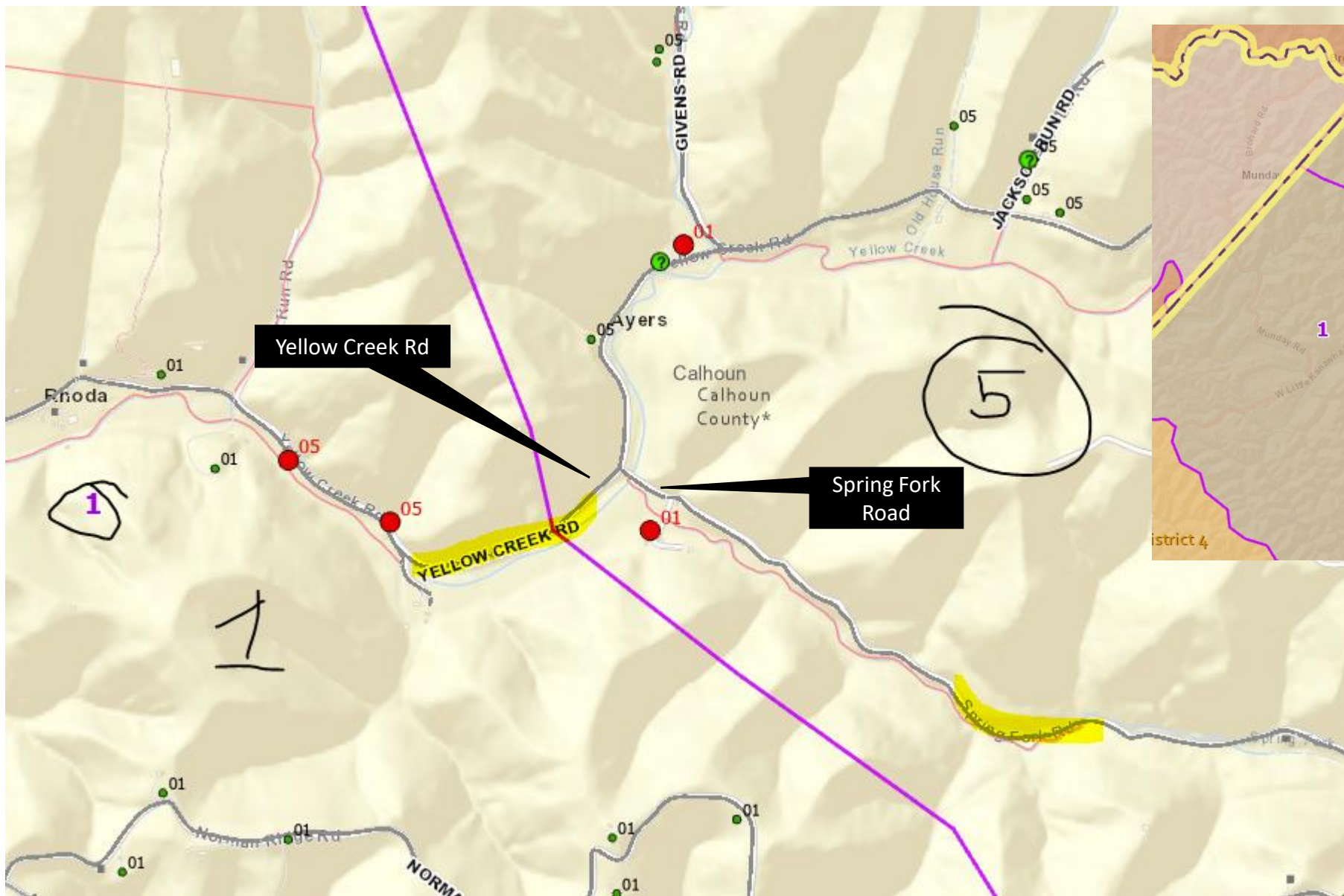
Precincts 5-4-1 Bdry, (Broomstick Rd – Precinct 5)



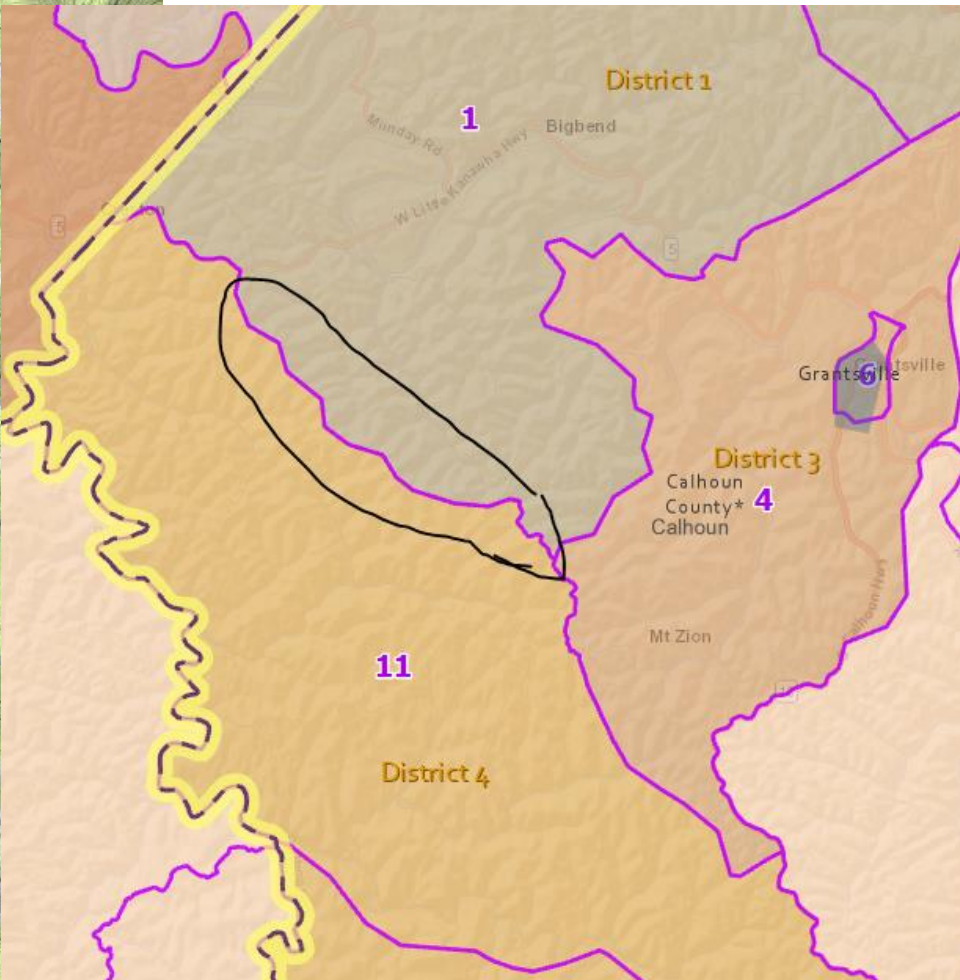
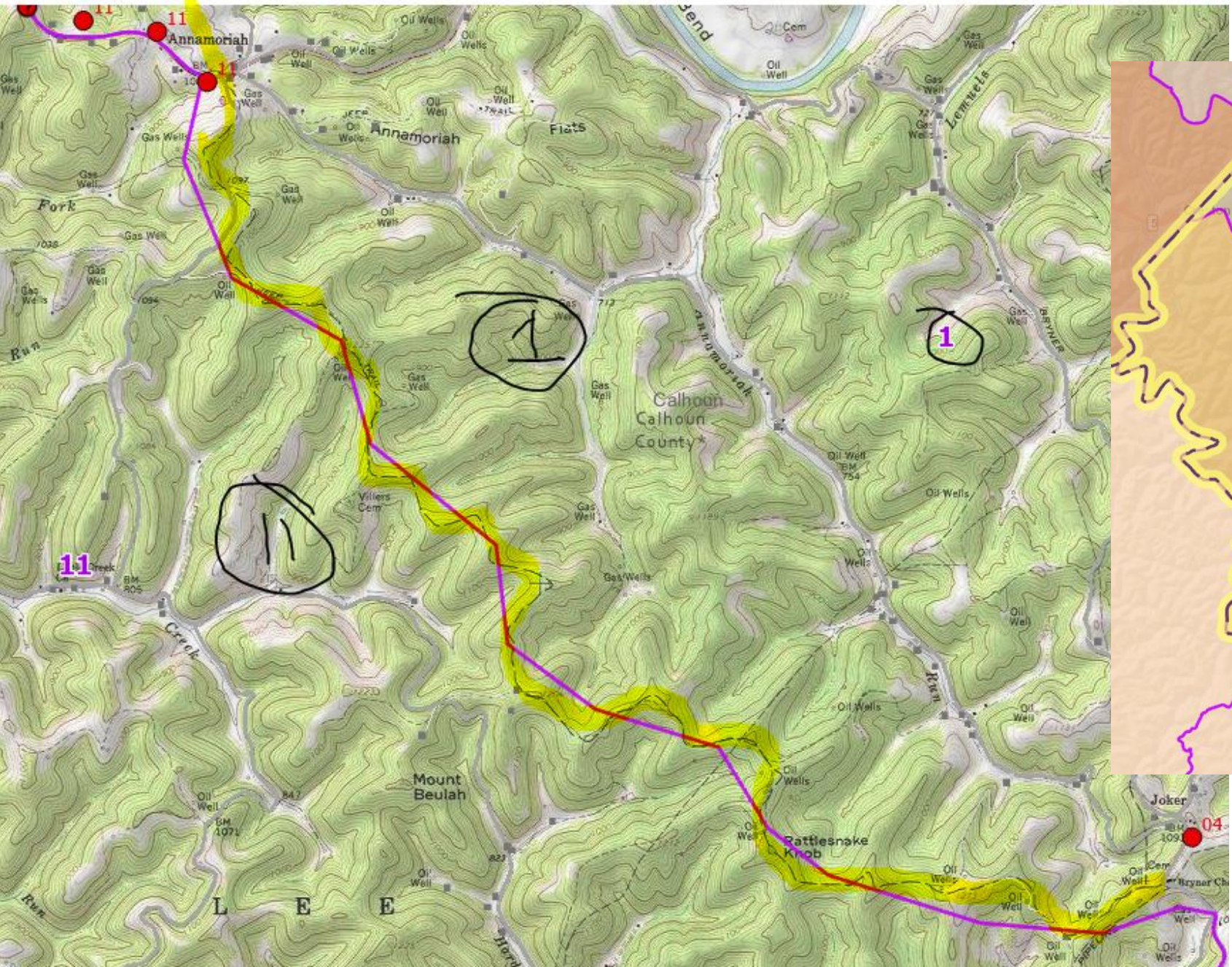
Precincts 5-4-8 Bdry, (Broomstick Rd – Precinct 5, Lovada Rd – Precinct 4)



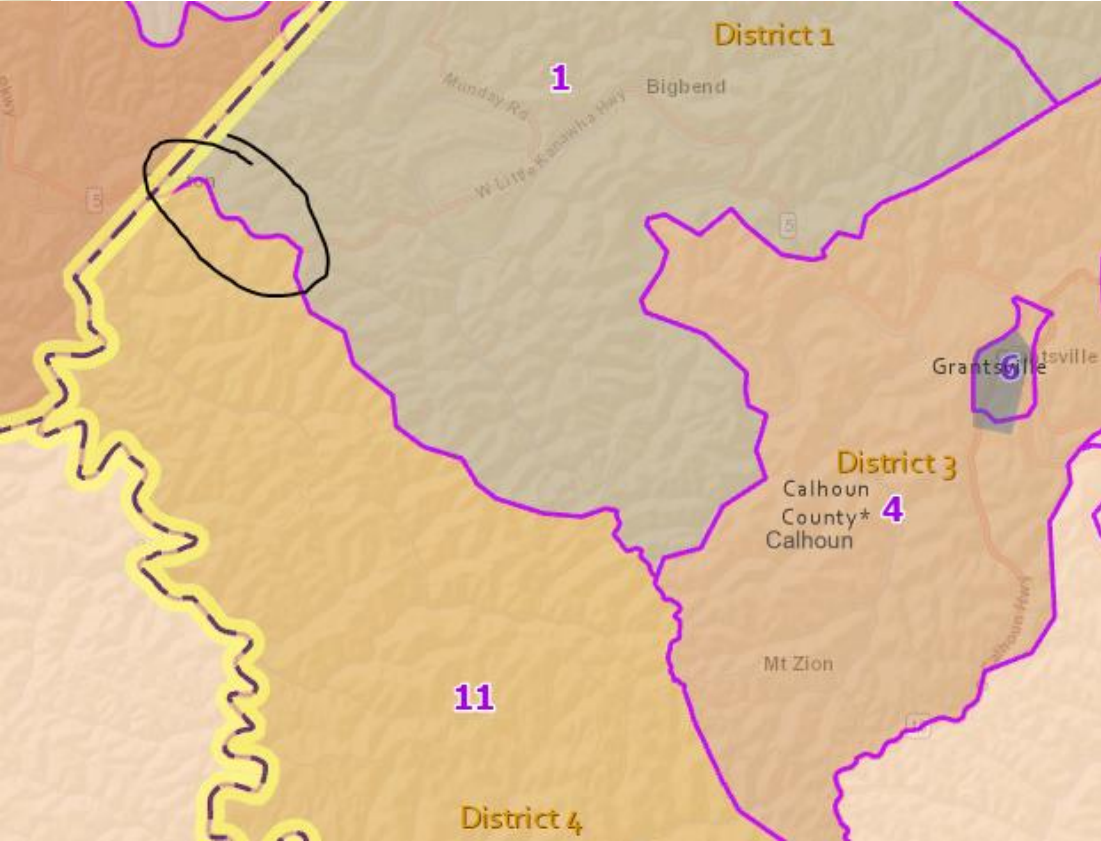
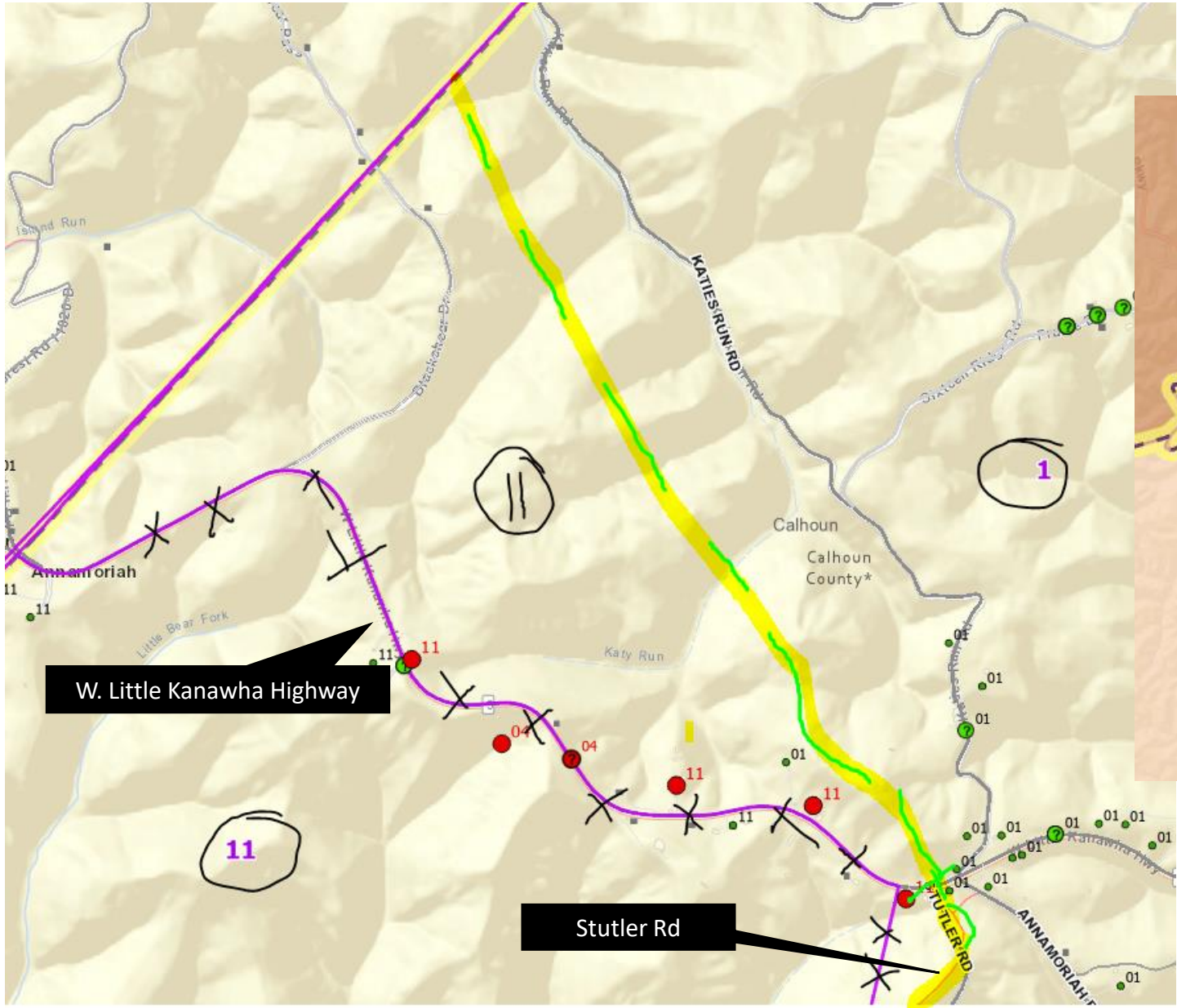
Precincts 5-1 Bdry, (Yellow Creek Rd, Spring Fork Rd – which precinct?)



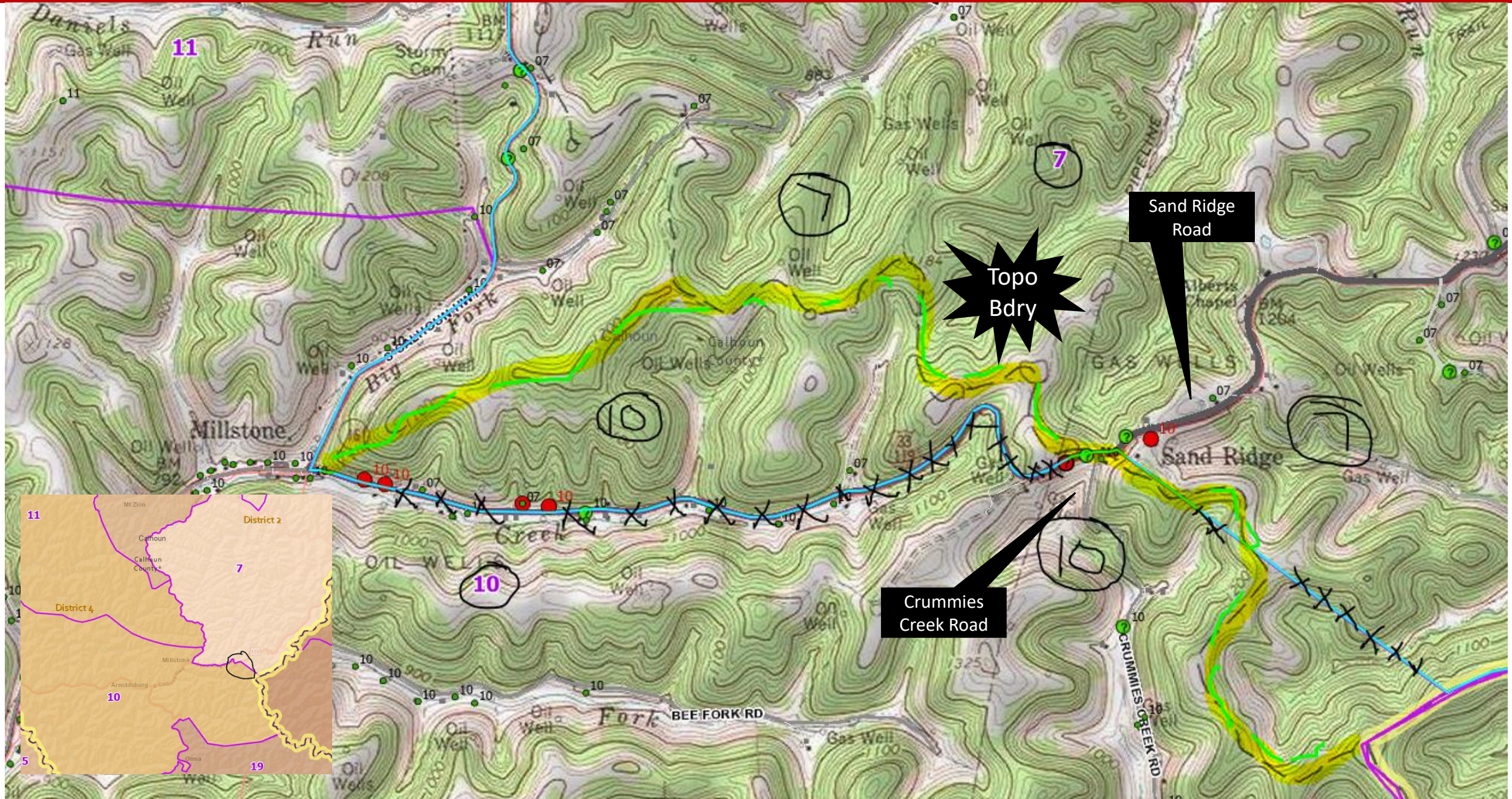
Precincts 1-11 Bdry (Tax District Boundary - Ridgeline)



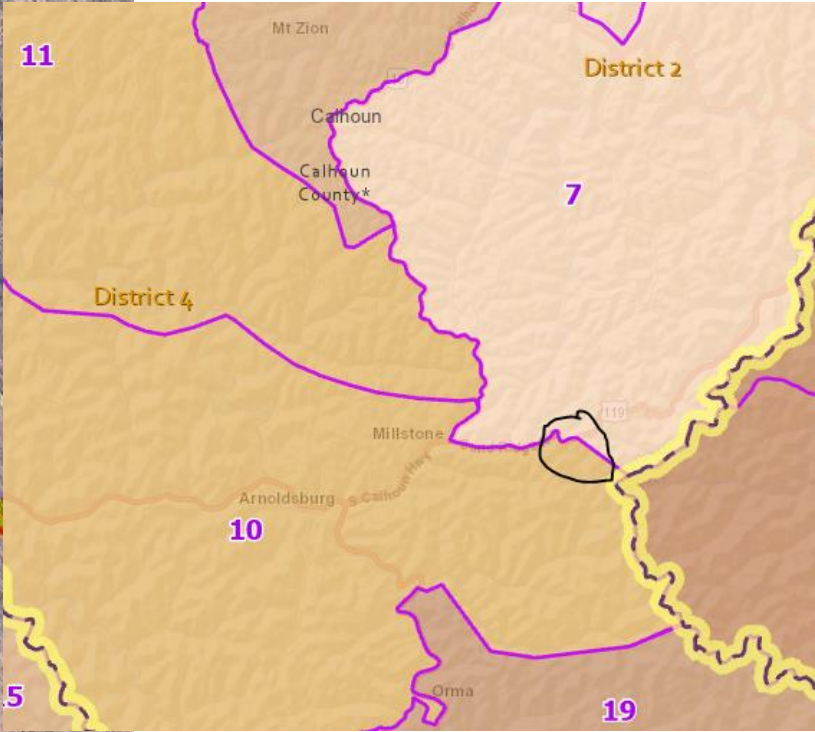
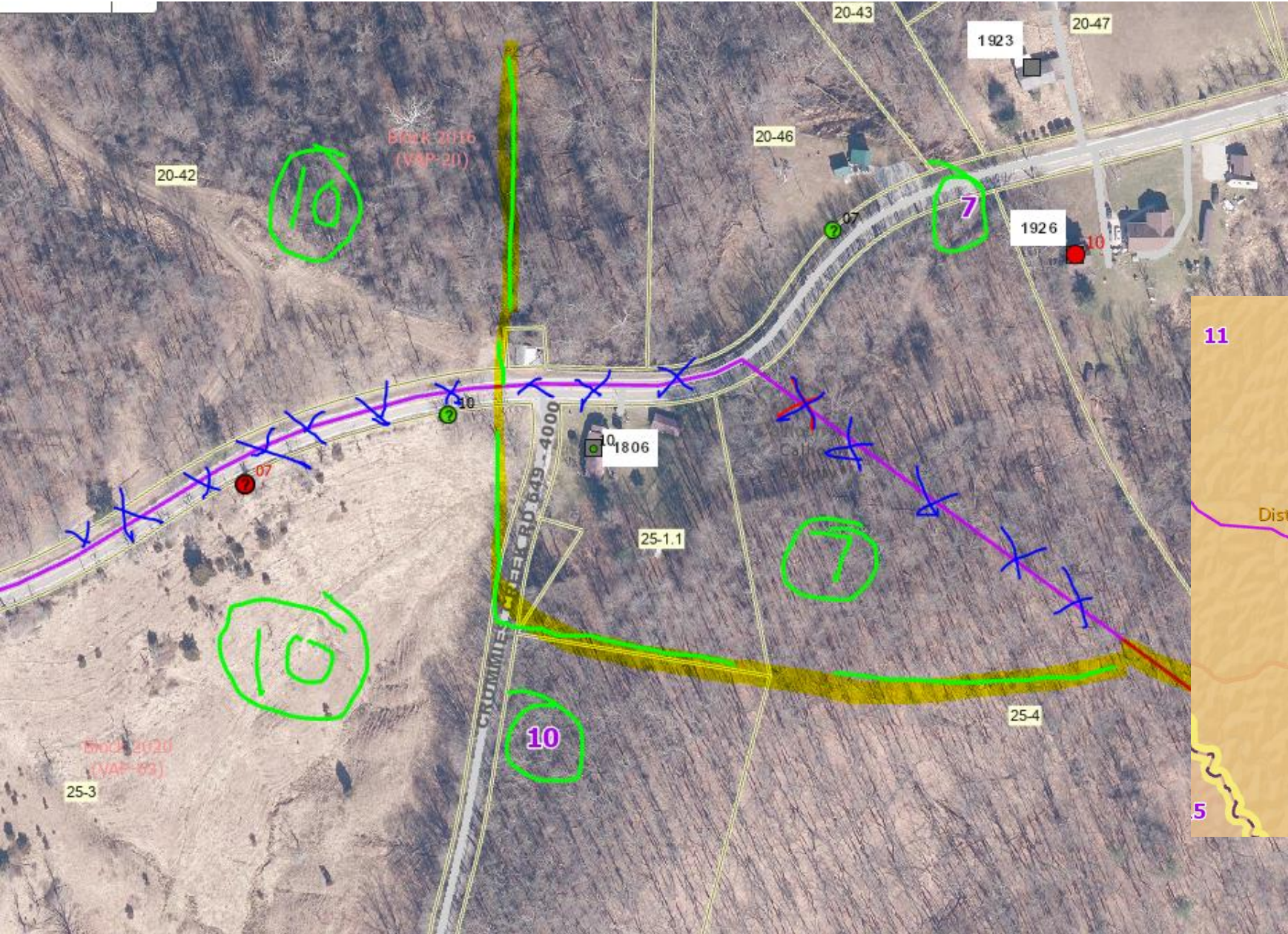
Precincts 1-11 Bdry (W. Little Kanawha Hwy west of Stutler road)



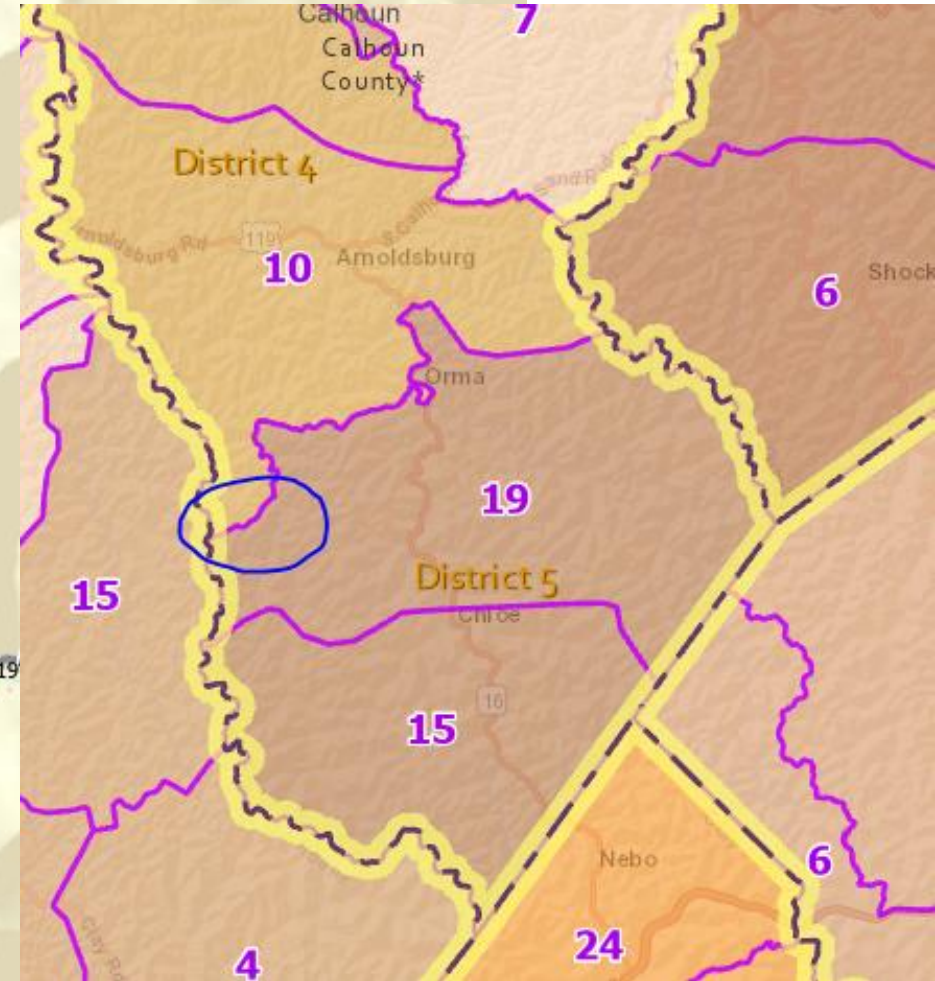
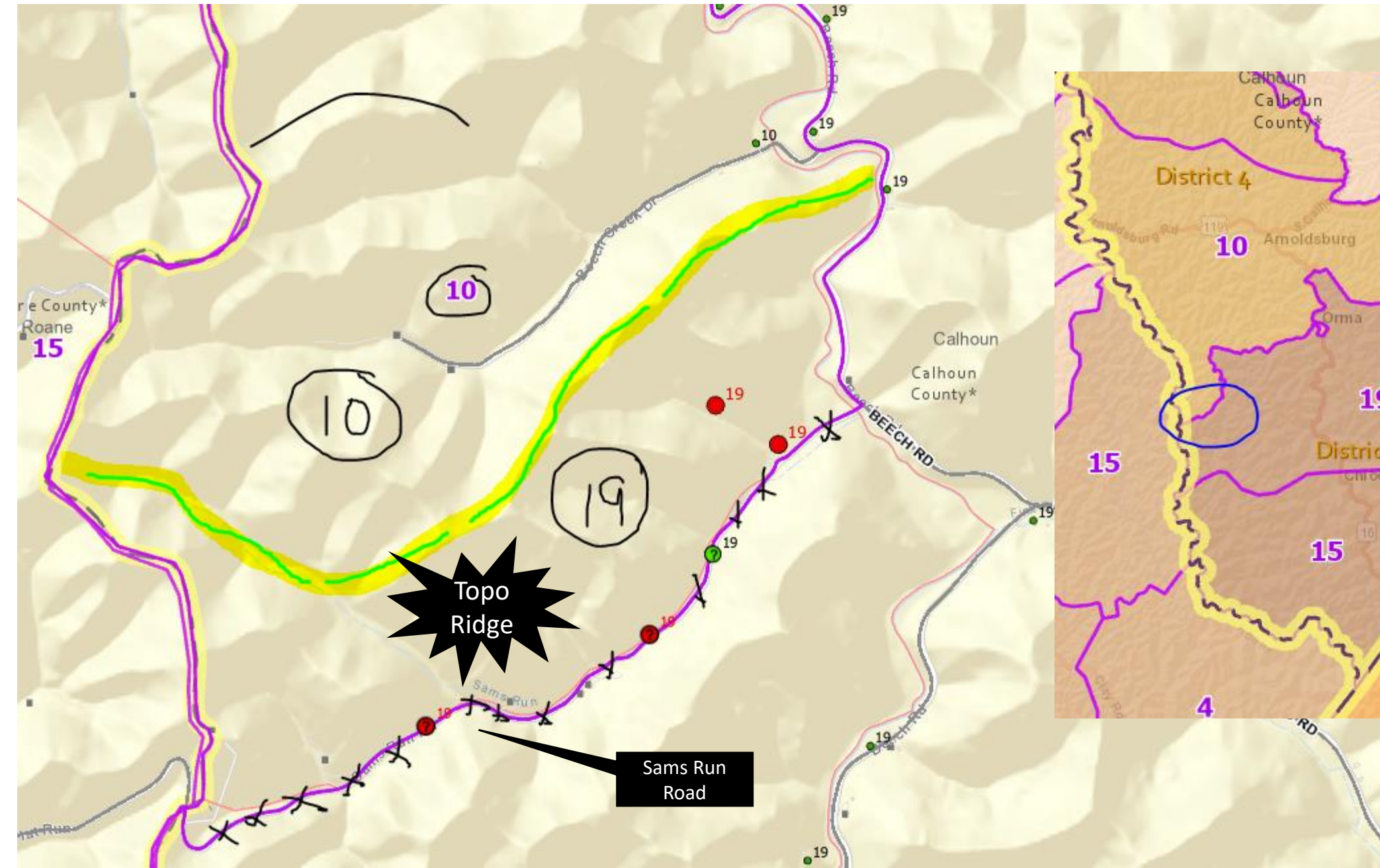
Precincts 10-7 Bdrys, (Crummies Creek Rd – Precinct 10)



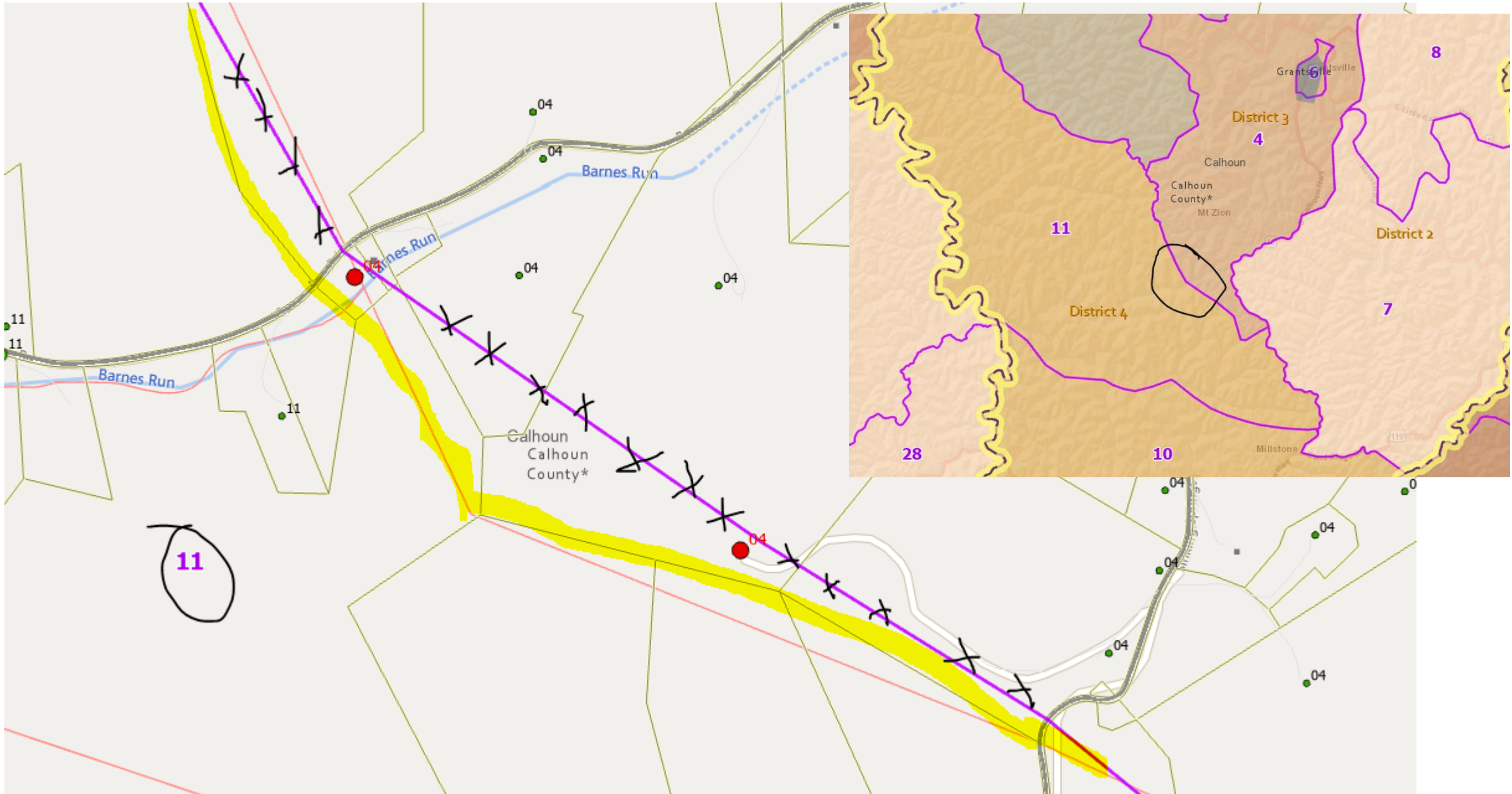
Precincts 10-7 Bdry, (Intersection Crummies Creek Rd, Sand Ridge Rd)



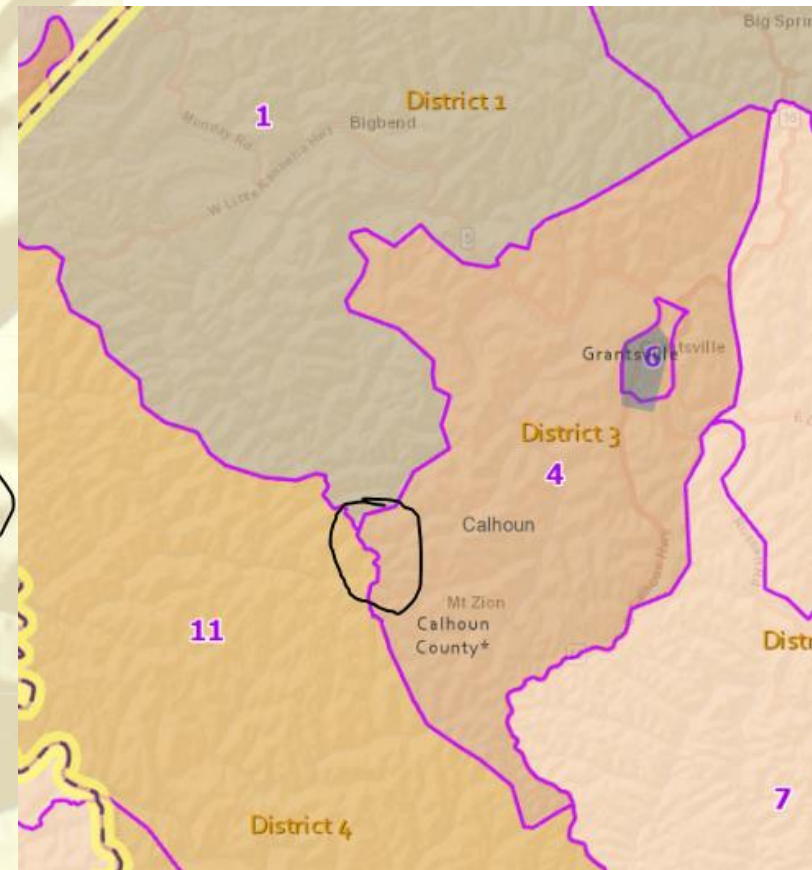
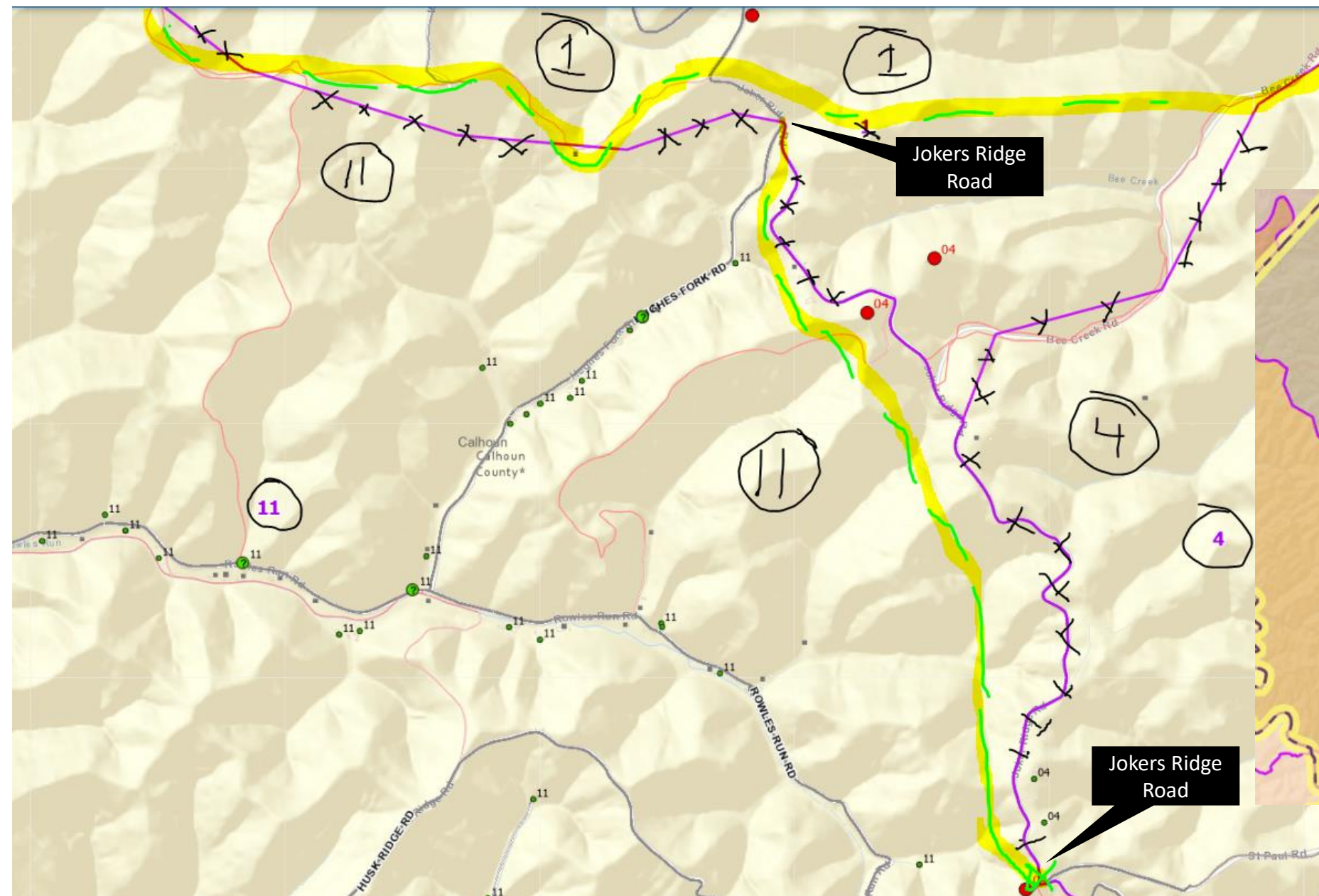
Precincts 10-19 Bdry, (Sams Run Rd – Precinct 19)



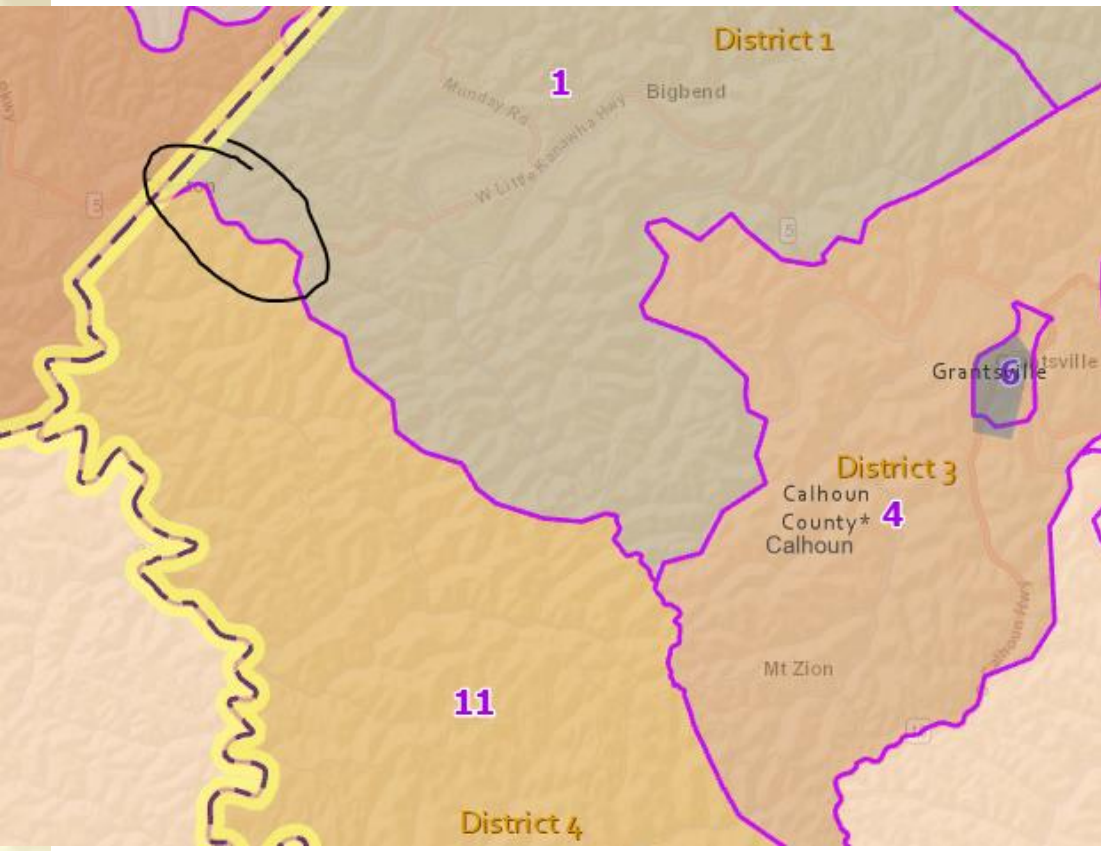
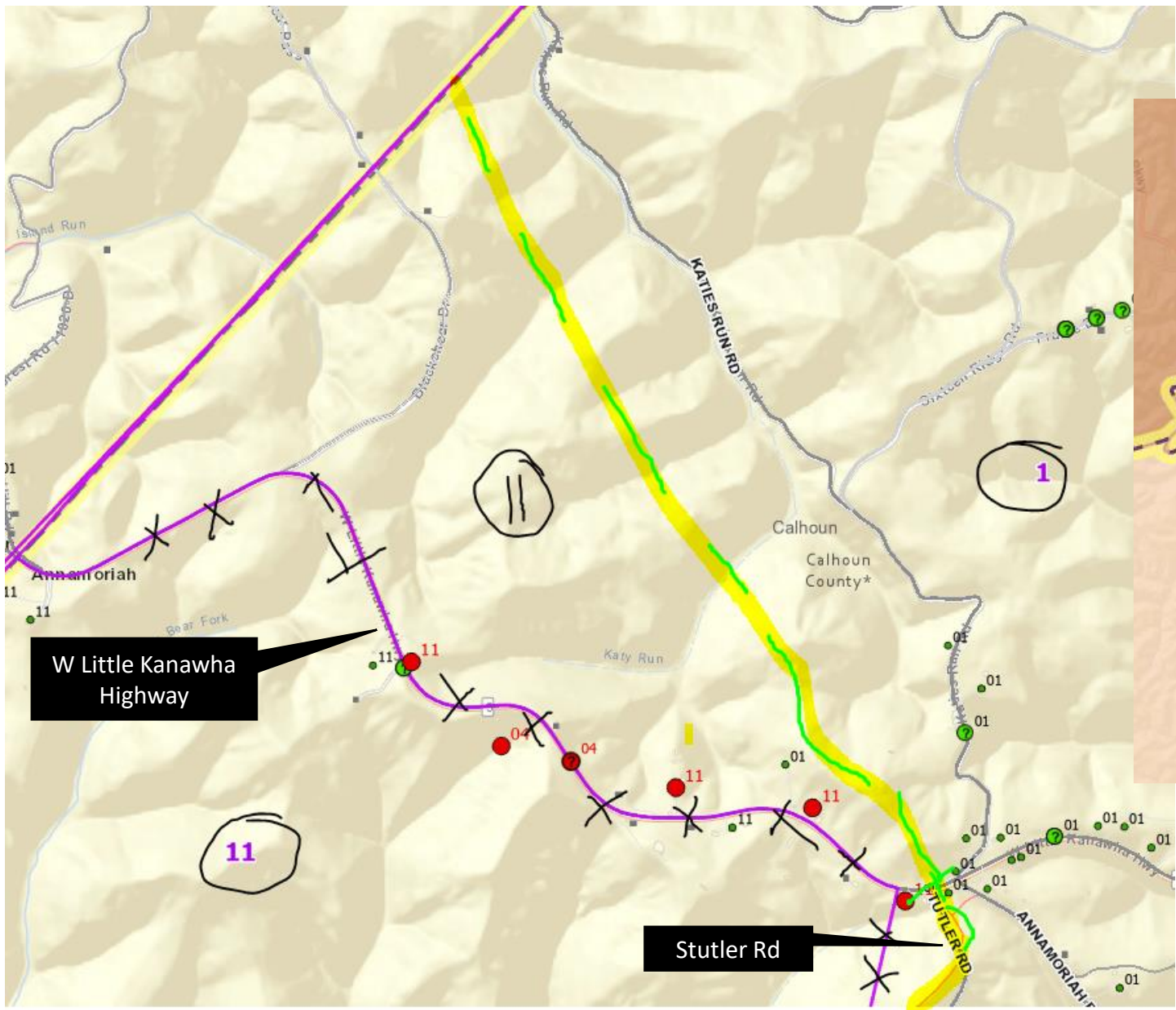
Precincts 4-11 Bdrys



Precincts 1-4-11 Bdry (Jokers Ridge Road – Precinct 4)



Precincts 1-11 Bdry (W. Little Kanawha Hwy west of Stutler road)



Precincts 15-19 Bdry, (Little Walnut Hill Rd – Precinct 19)

