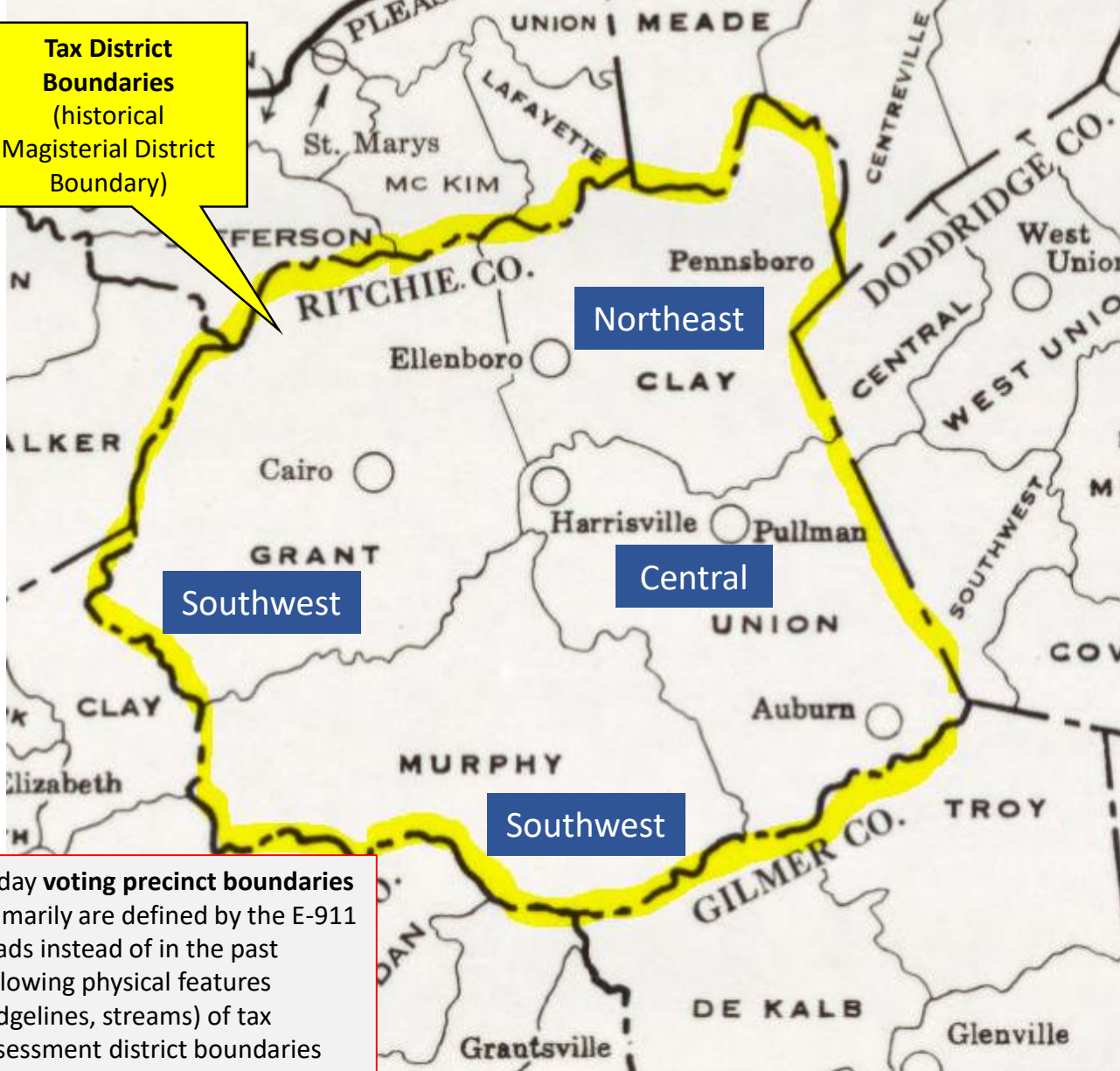


RITCHIE COUNTY: Election District Mapping

- Geo-SVRS Voter Match: Ensure **Voter Registration Site Points** are assigned to the correct geographic precinct. Refer to mismatch spreadsheet or red dots on G-SVRS Tool (www.mapwv.gov/SVRS). Consult with E-911 office about **invalid addresses** or **spatially inaccurate addresses** that cannot be mapped to the building footprint (less accurate street address match).
- Precinct Boundary Definition Factors:
 - **E-911 Addresses & Road Centerlines**
 - All addresses of smaller roads or roads in hollows/narrow valleys should be in a single voting precinct to minimize multiple road segment definitions in the SVRS
 - Street Geocodes: Geocode matches to street ranges are problematic for road precinct boundaries
 - **Incorporated Place Boundaries** should be accurate and match precinct boundaries
 - **Topographic Ridge Boundaries.** In rural counties, typically tax district and historical magisterial district line boundaries follow topographic ridgelines.
 - **Proximity to Polling Sites.** Voter point travel time/distance to polling site of precinct
 - **Census Blocks.** Follow existing census block edge boundaries if exist
- Voting Precinct Boundary Alignment Issues/No Gaps:
 - Precinct boundaries should align coincidentally with **USGS 1:24,000-scale county boundary** – not the less accurate Census boundary
 - Precinct boundaries should align coincidentally with **magisterial district lines**

RITCHIE COUNTY: PAST AND CURRENT MAGISTERIAL DISTRICTS

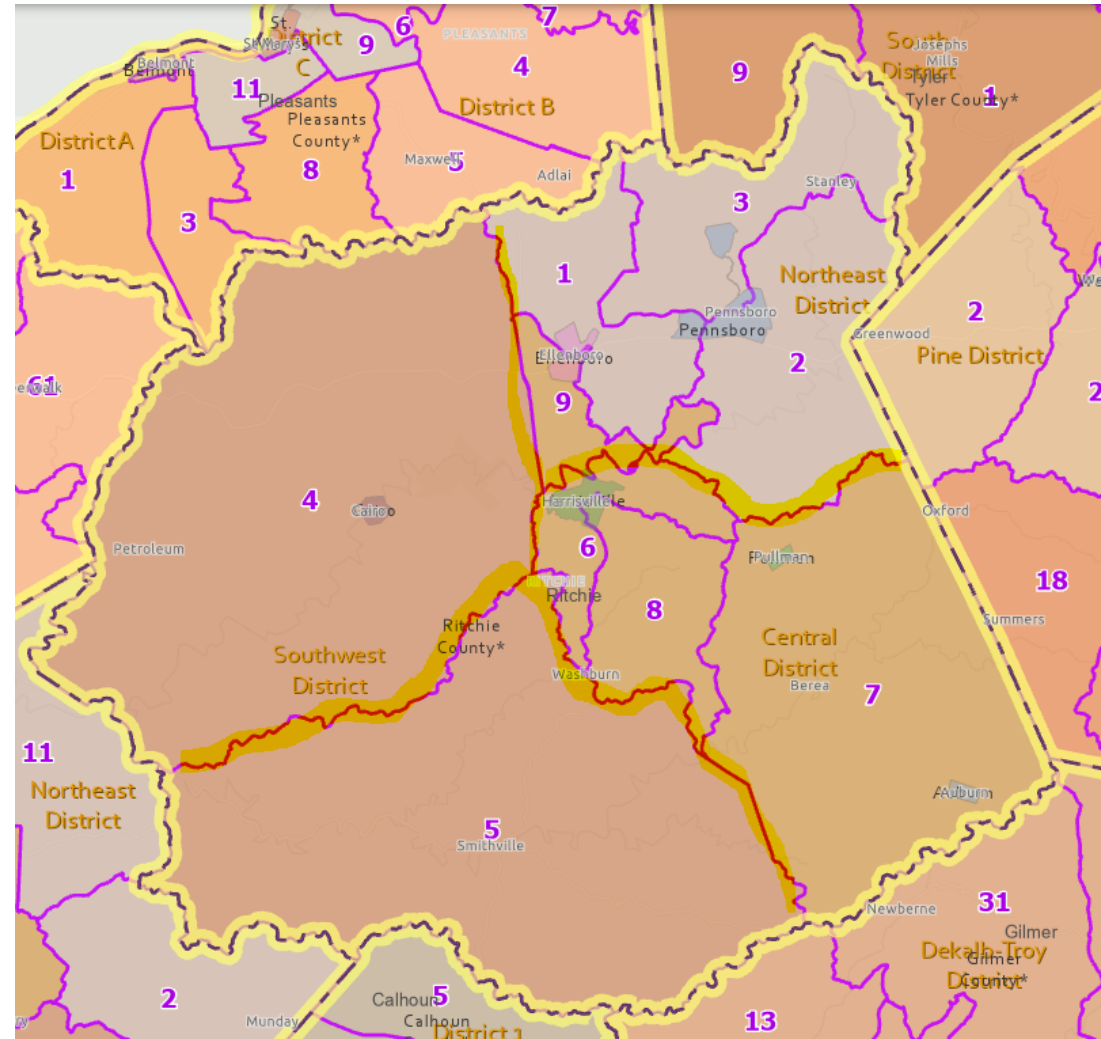
1970 Magisterial/Tax Districts



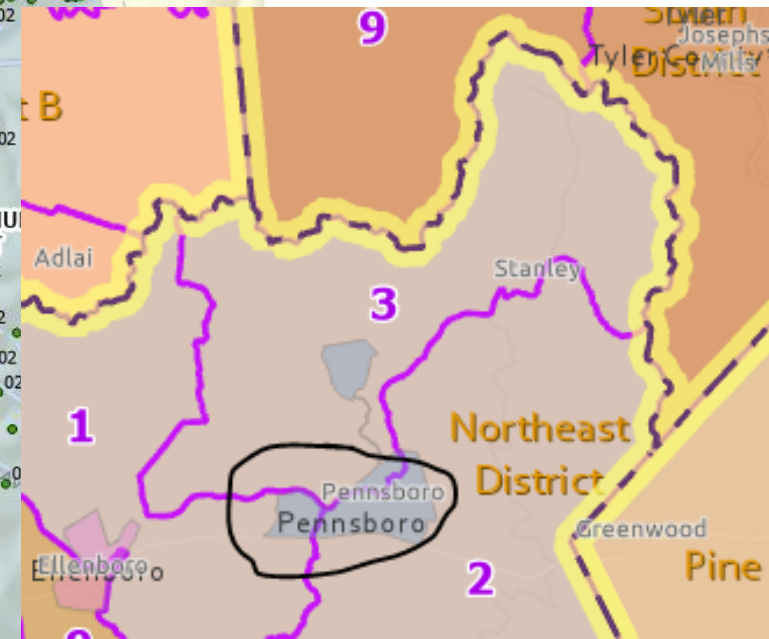
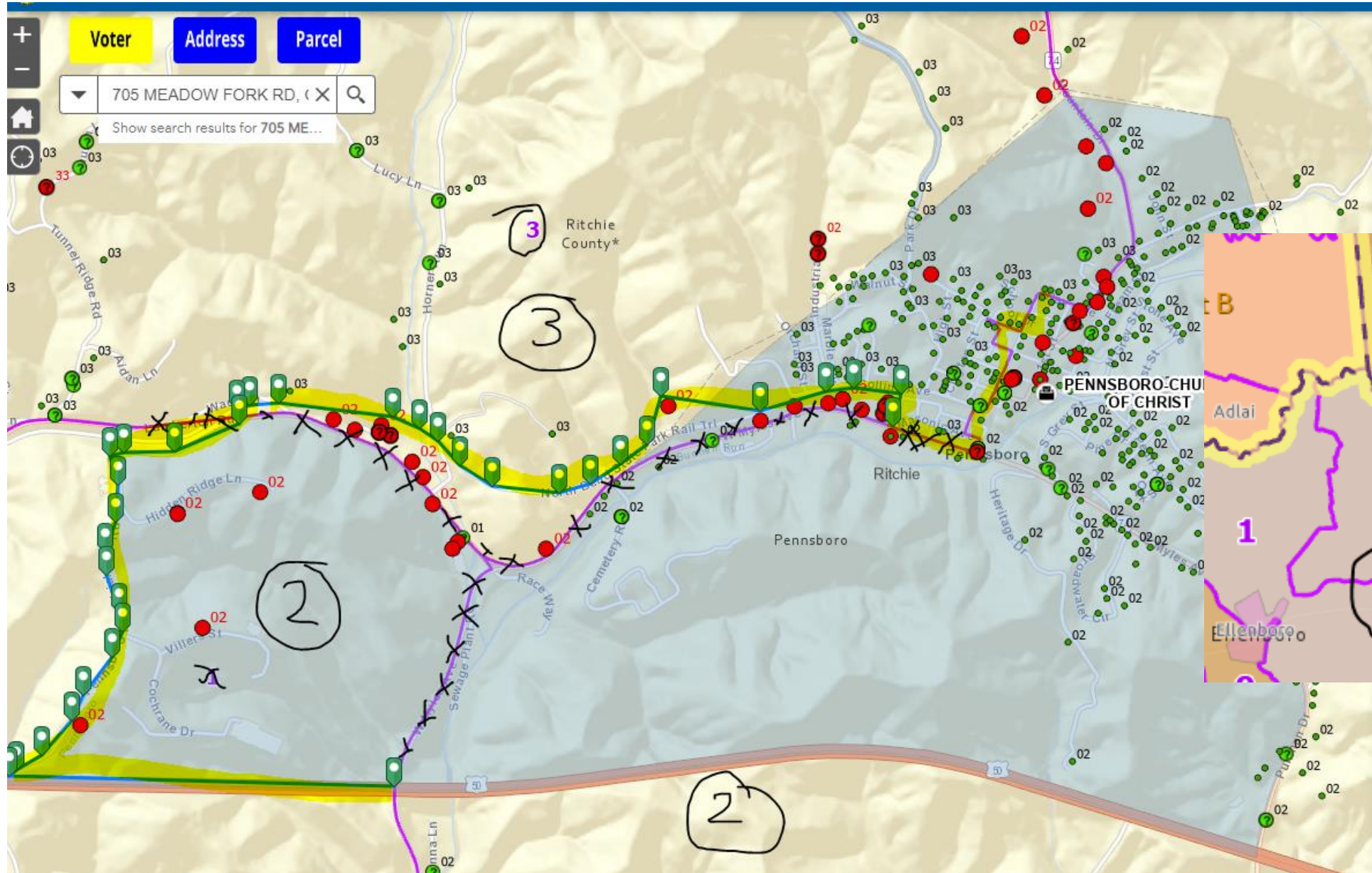
Tax District Boundaries
(historical Magisterial District Boundary)

Today **voting precinct boundaries** primarily are defined by the E-911 roads instead of in the past following physical features (ridgelines, streams) of tax assessment district boundaries

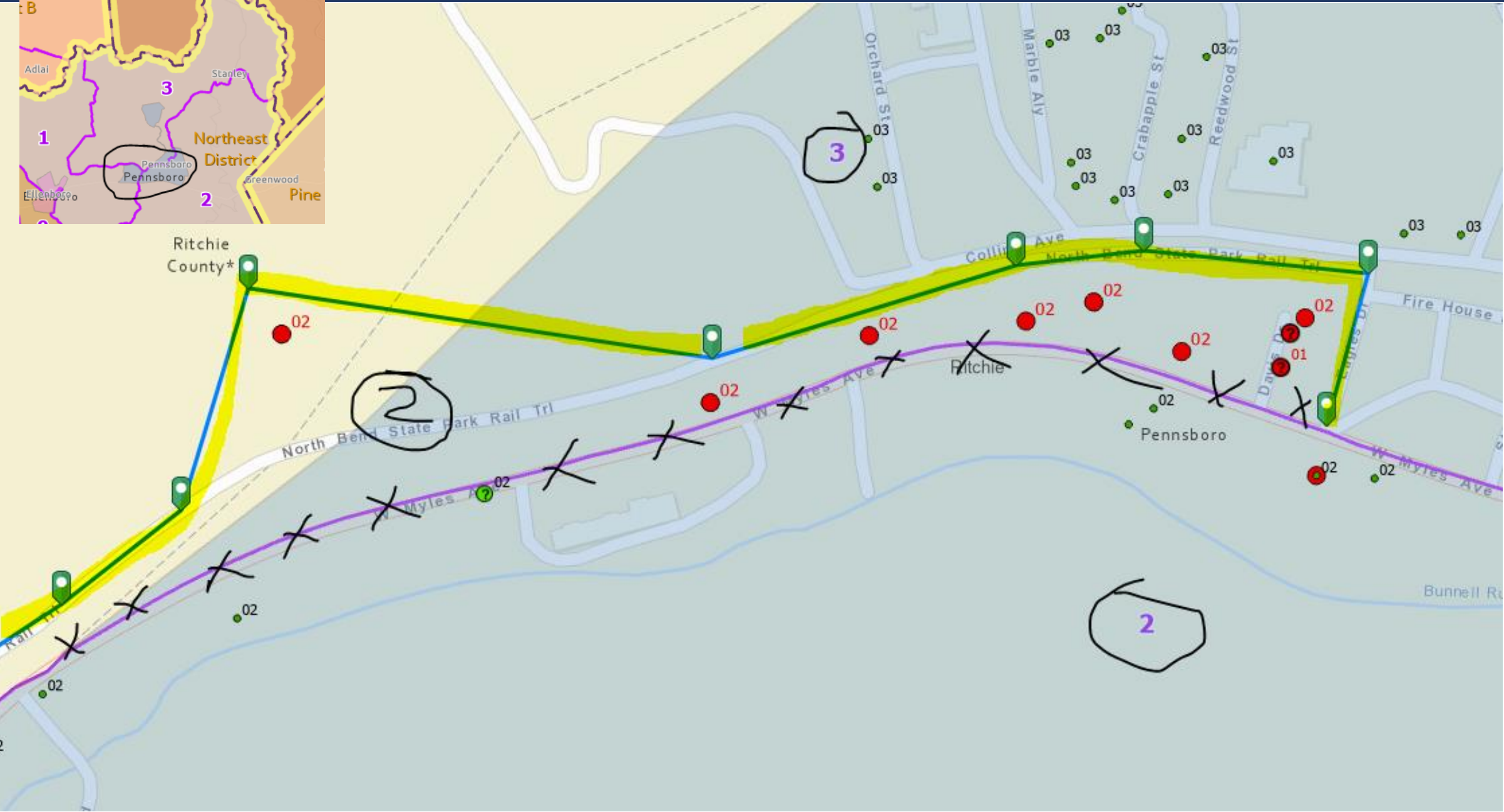
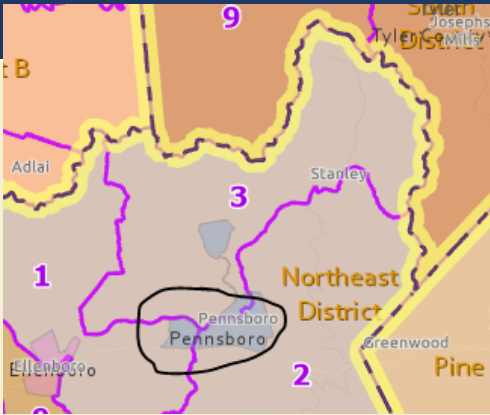
2023 Magisterial Districts & Precincts



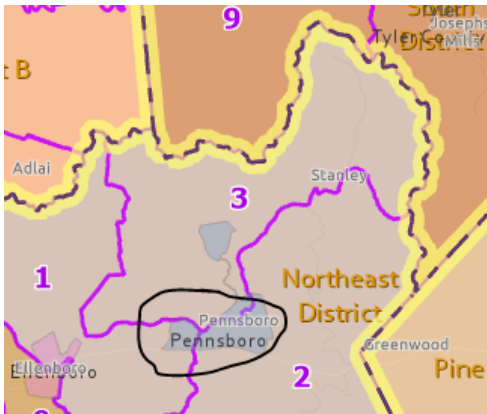
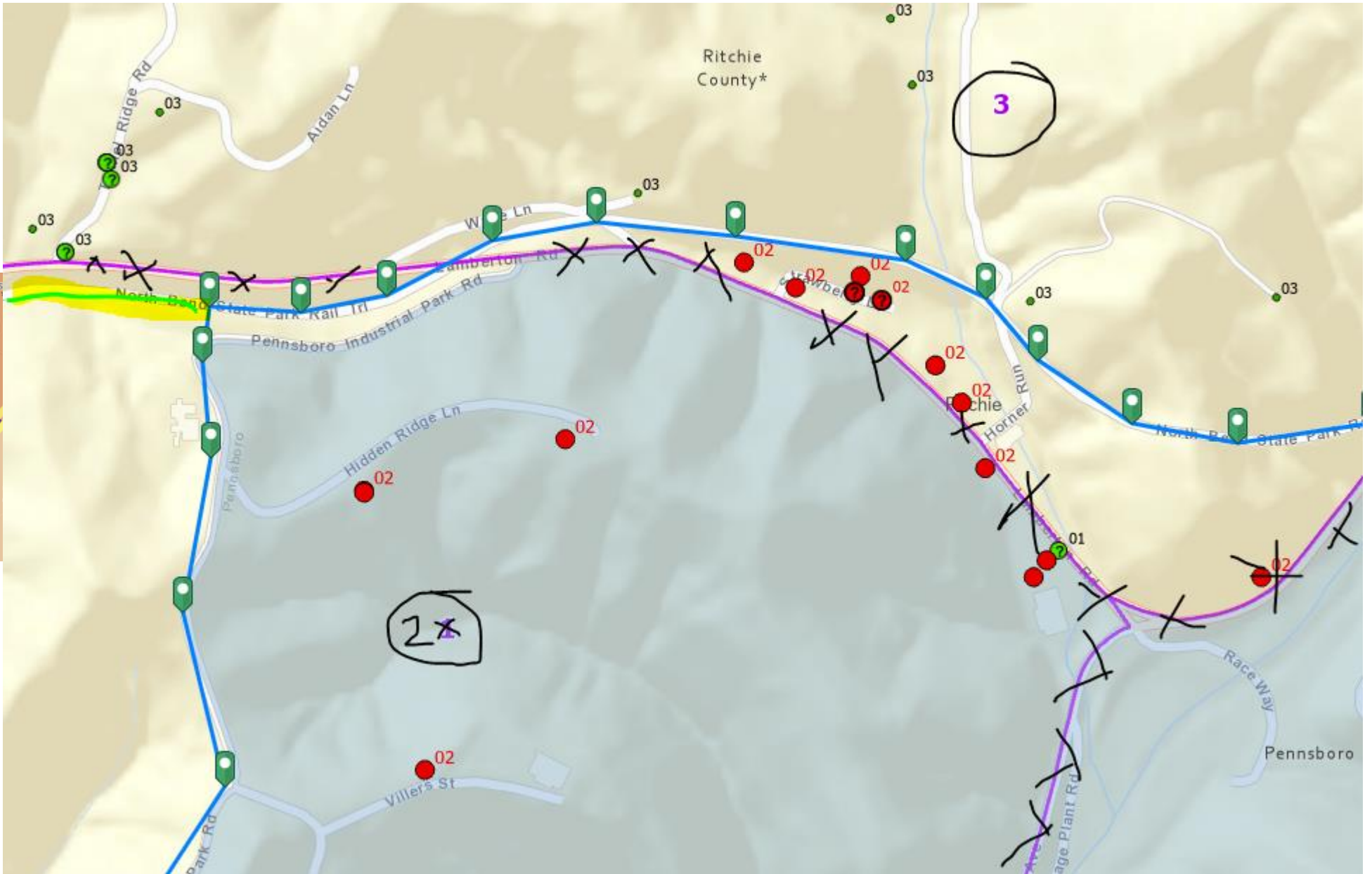
Precincts 2-3 Bdry, (Pennsboro)



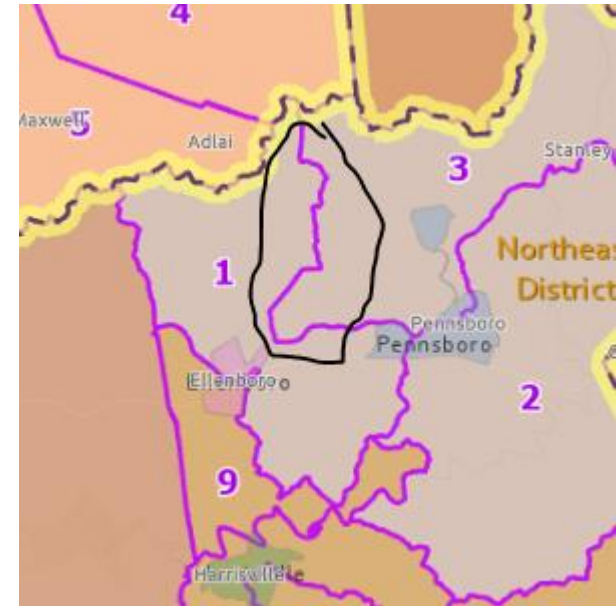
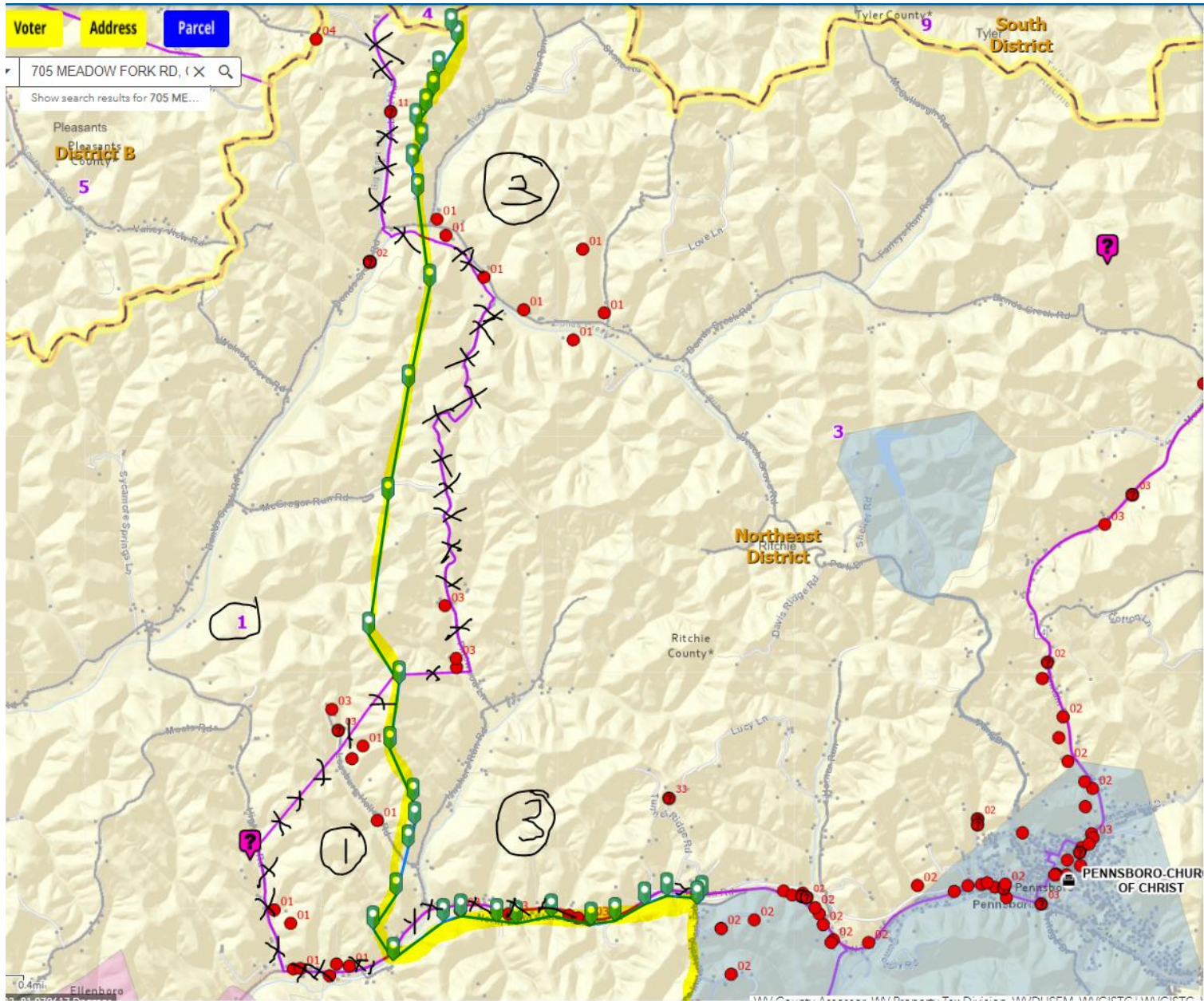
Precincts 2-3 Bdry, (Pennsboro)



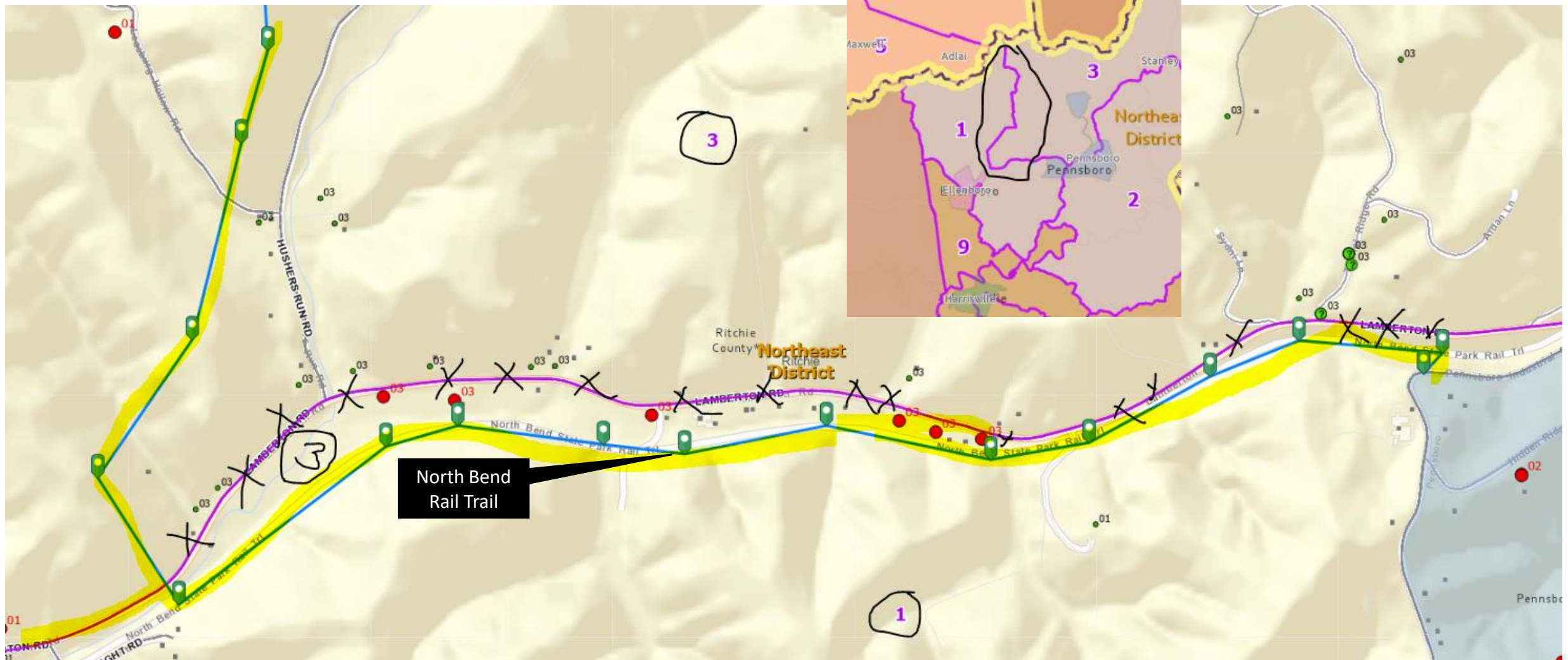
Precincts 2-3 Bdry, (Pennsboro)



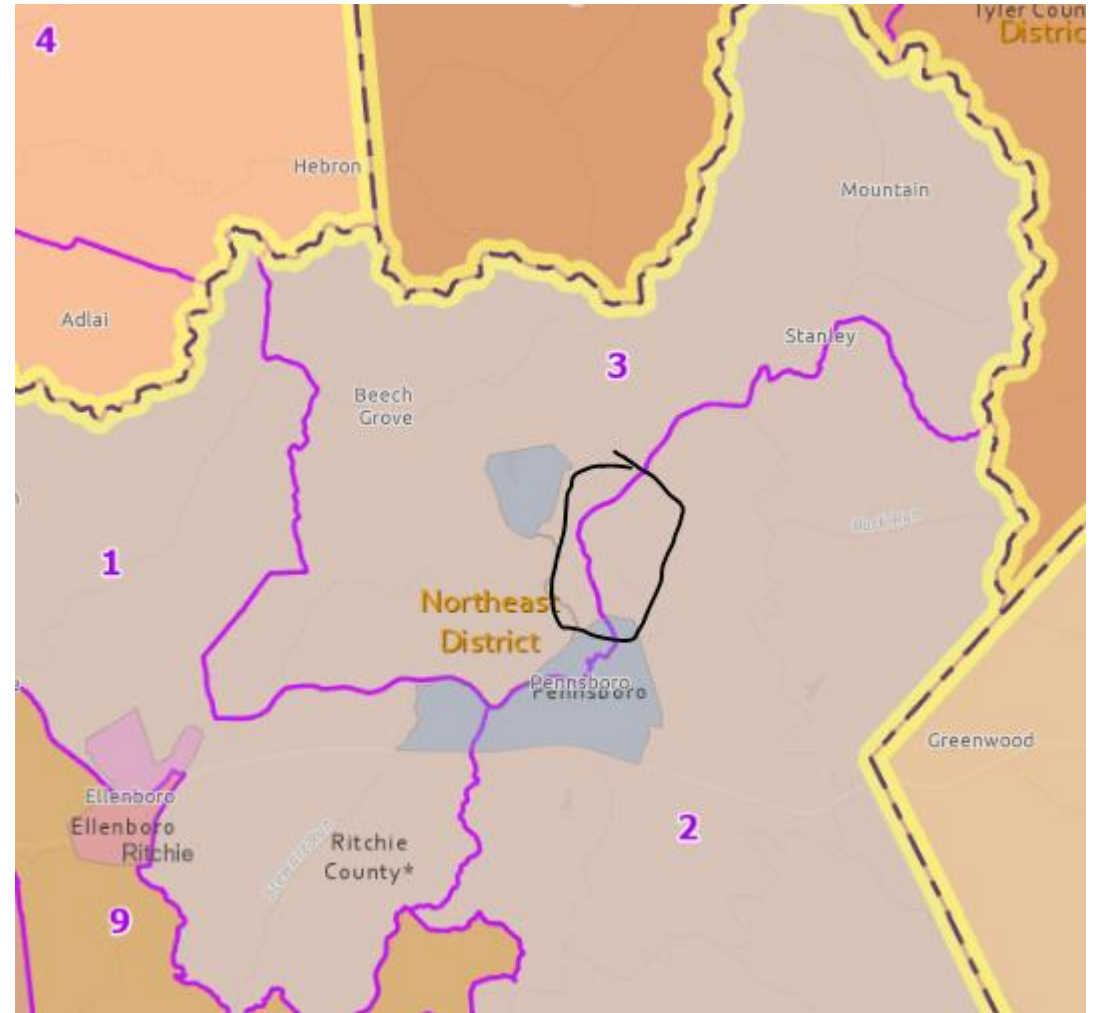
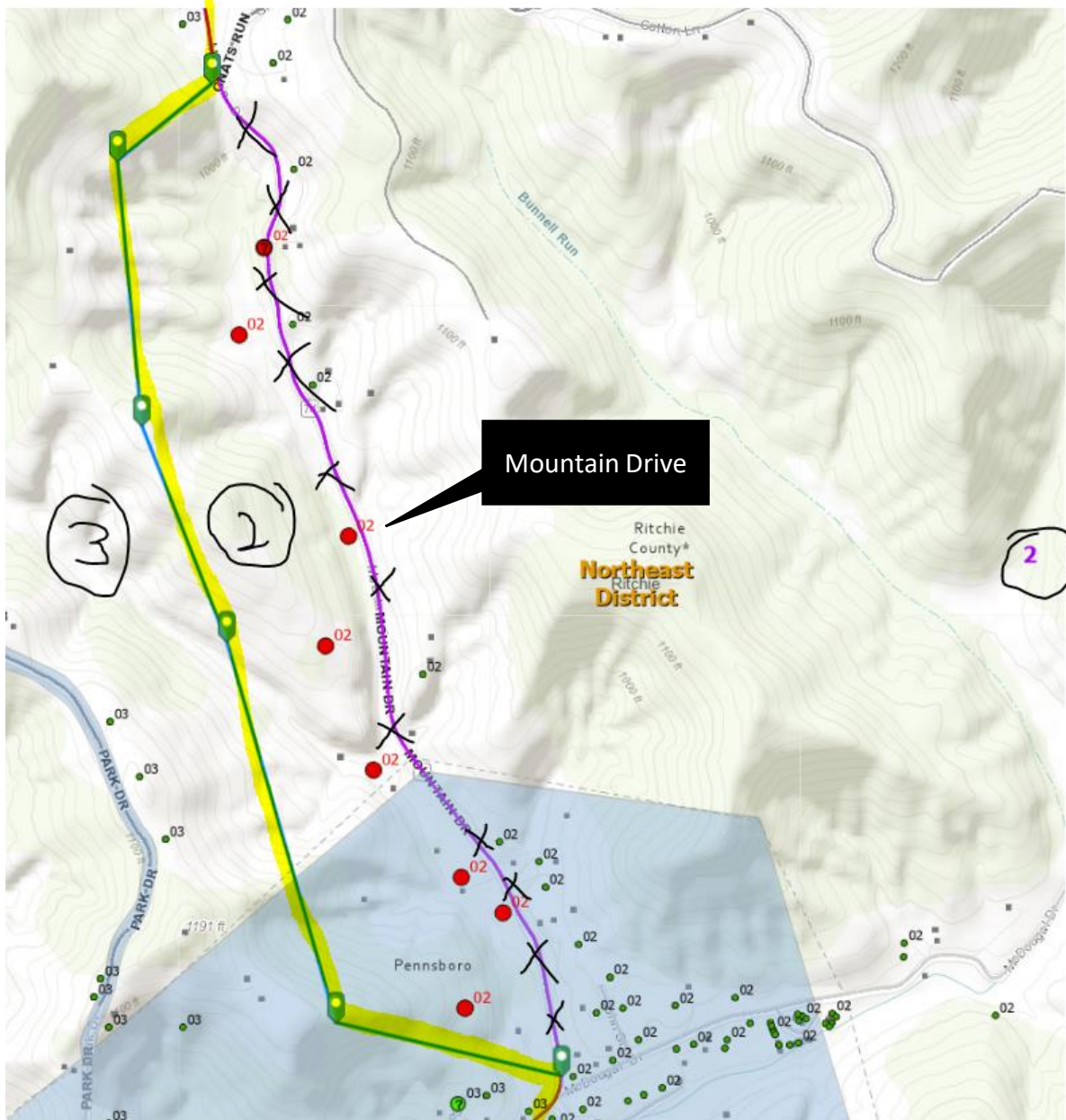
Precincts 1-3 Bdry



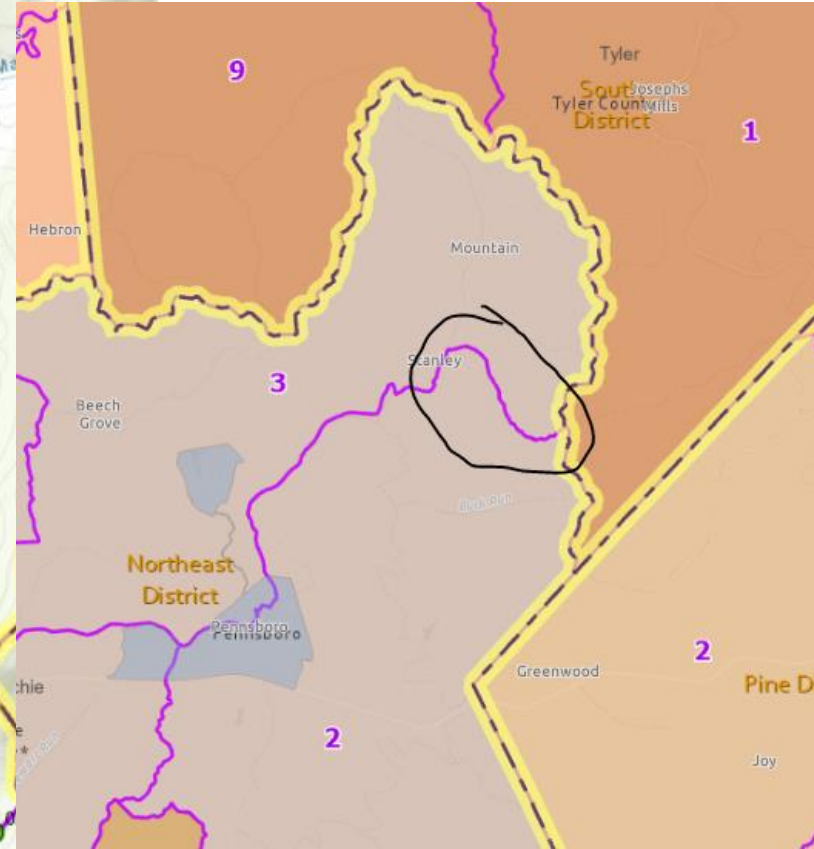
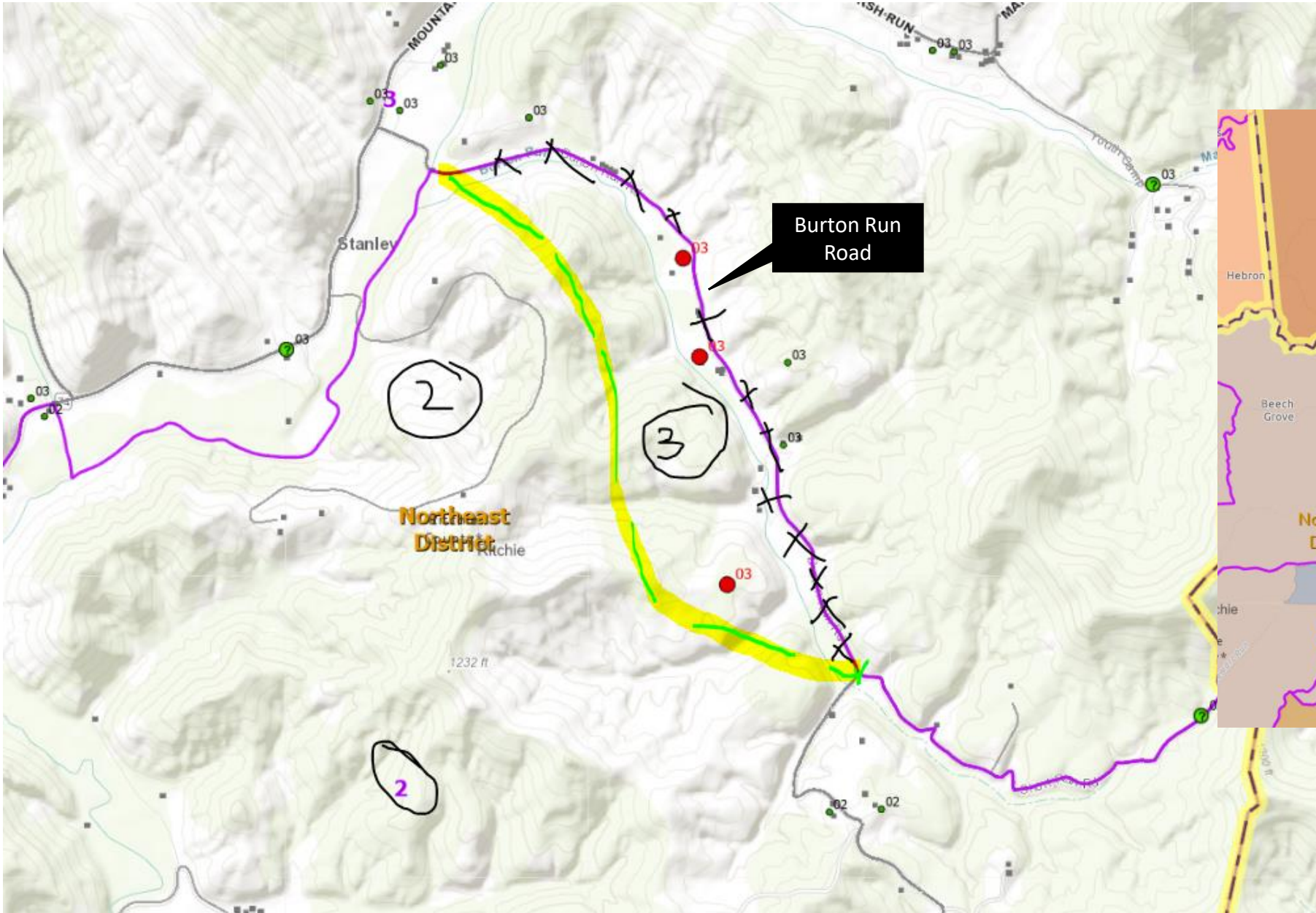
Precincts 1-3 Bdry



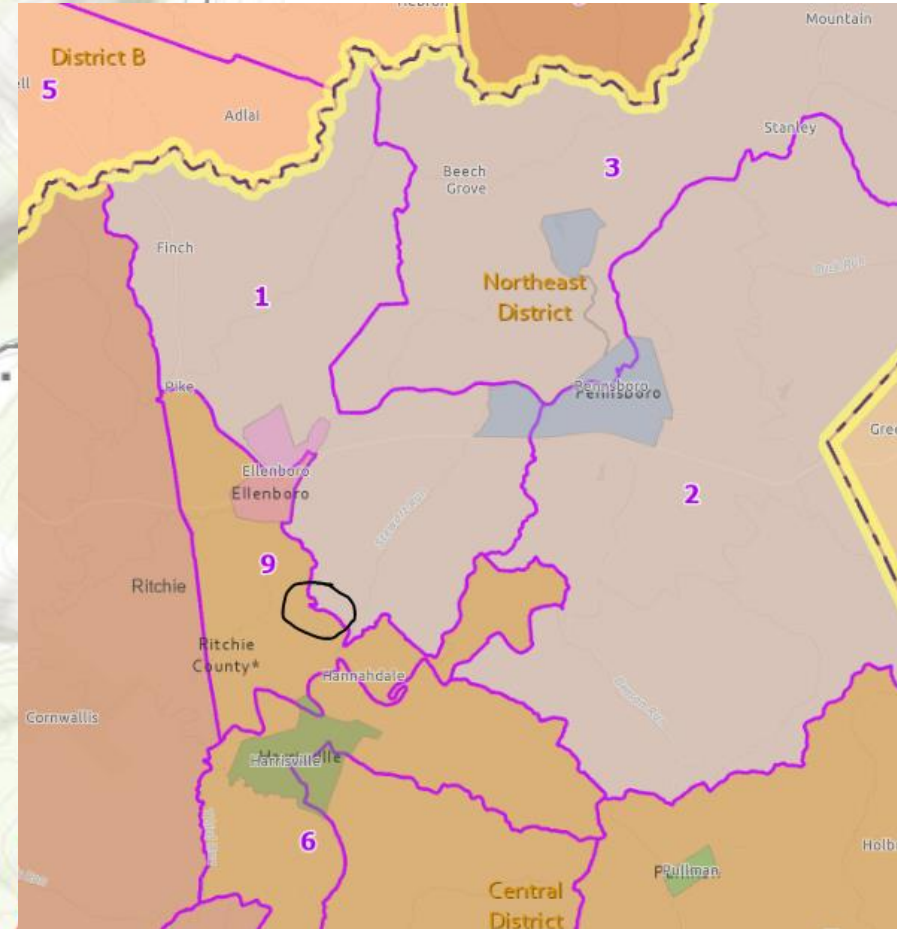
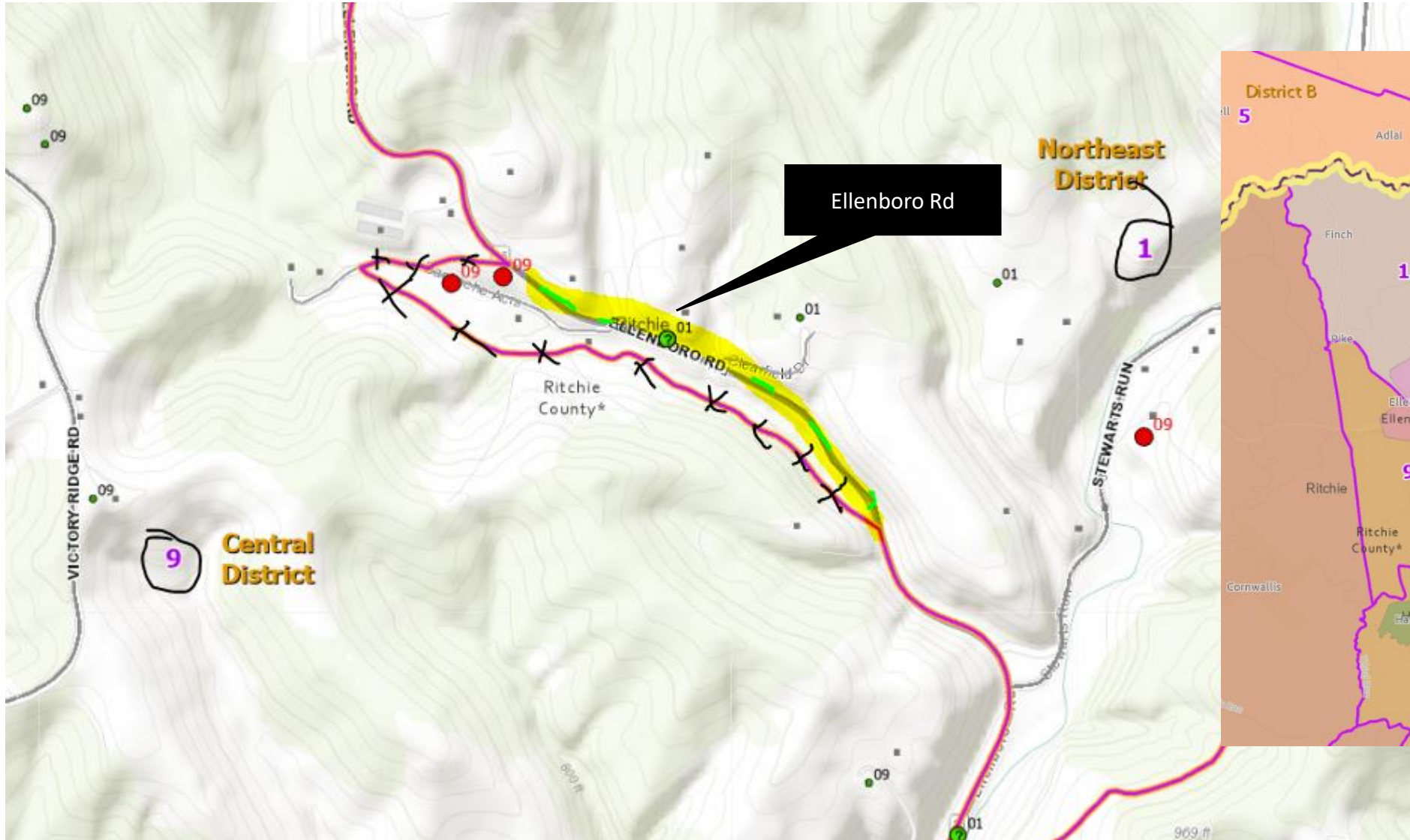
Precincts 2-3 Bdry



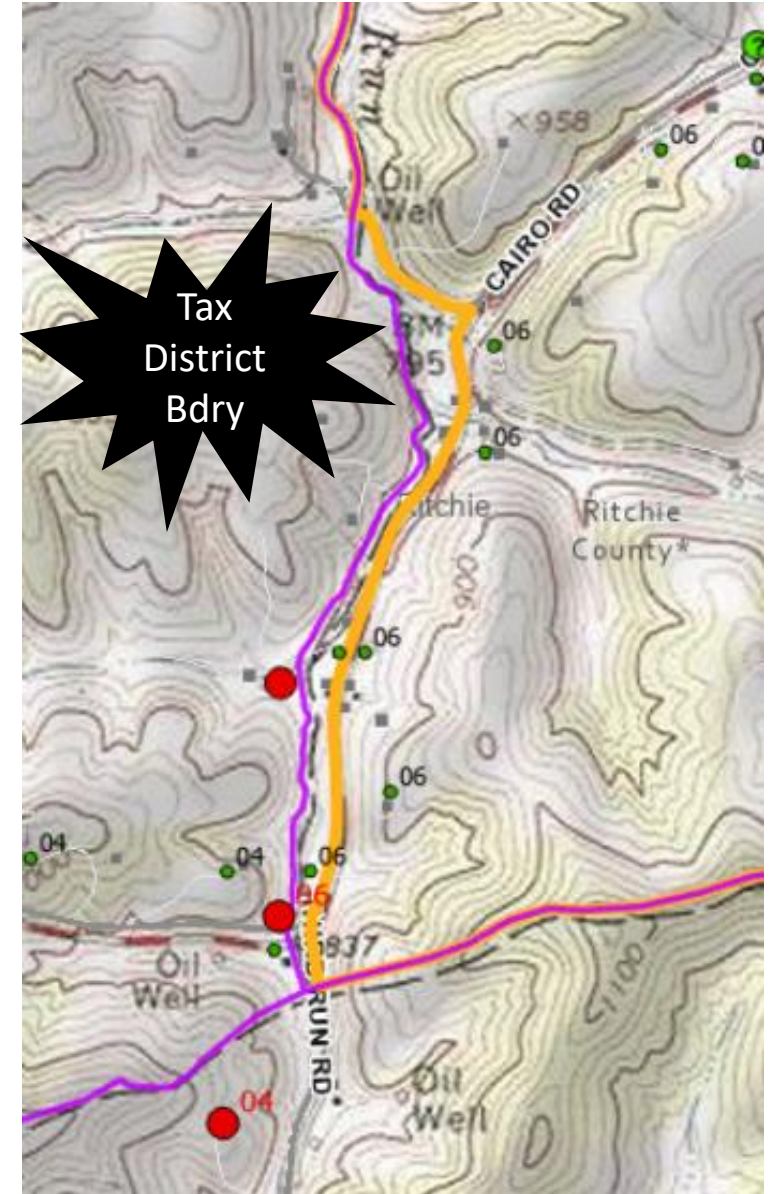
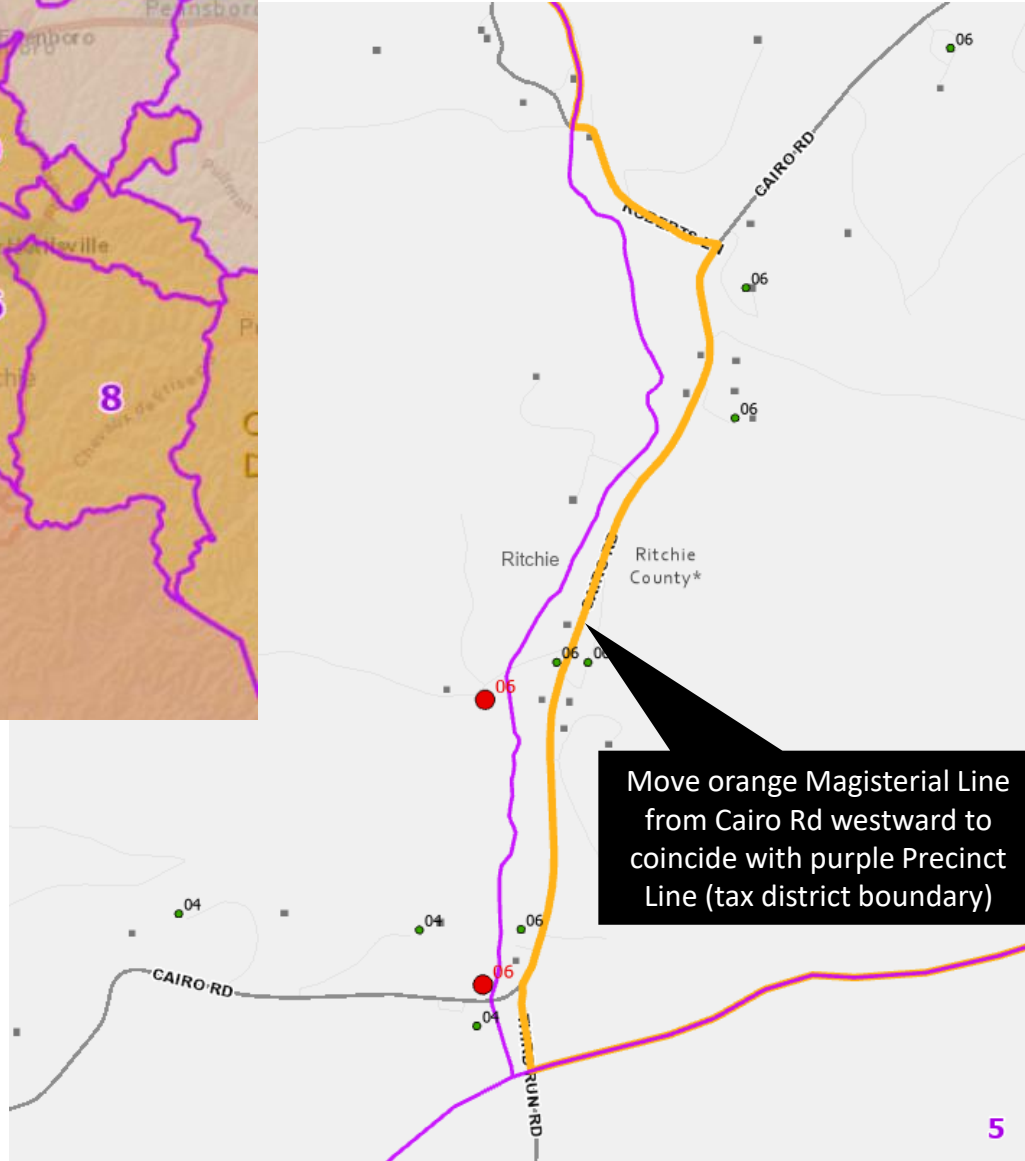
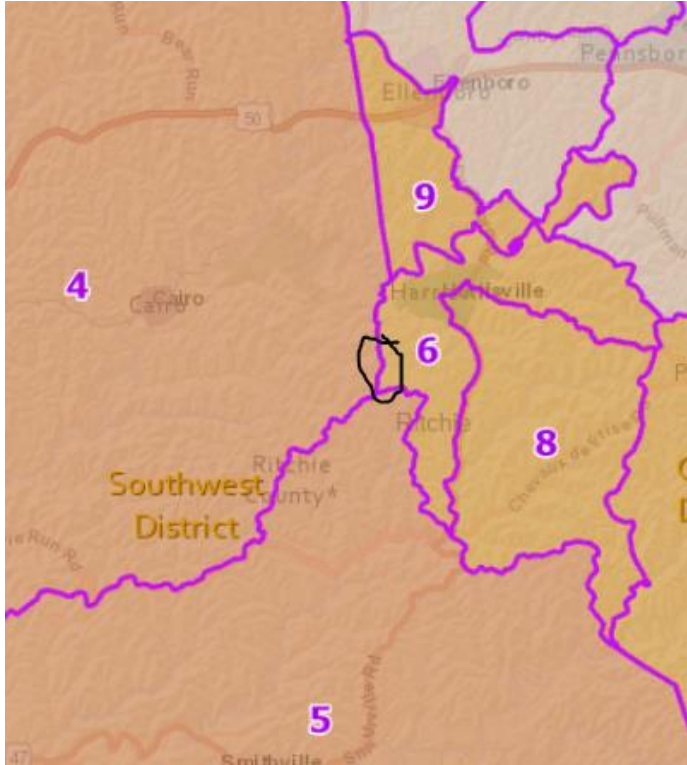
Precincts 2-3 Bdry



Precincts 1-9 Bdrys (Magisterial Line)



Precincts 4-6 Bdrys (Move Magisterial Line to Precinct Line)



Precincts 5-8 Bdrys (Magisterial Line)

