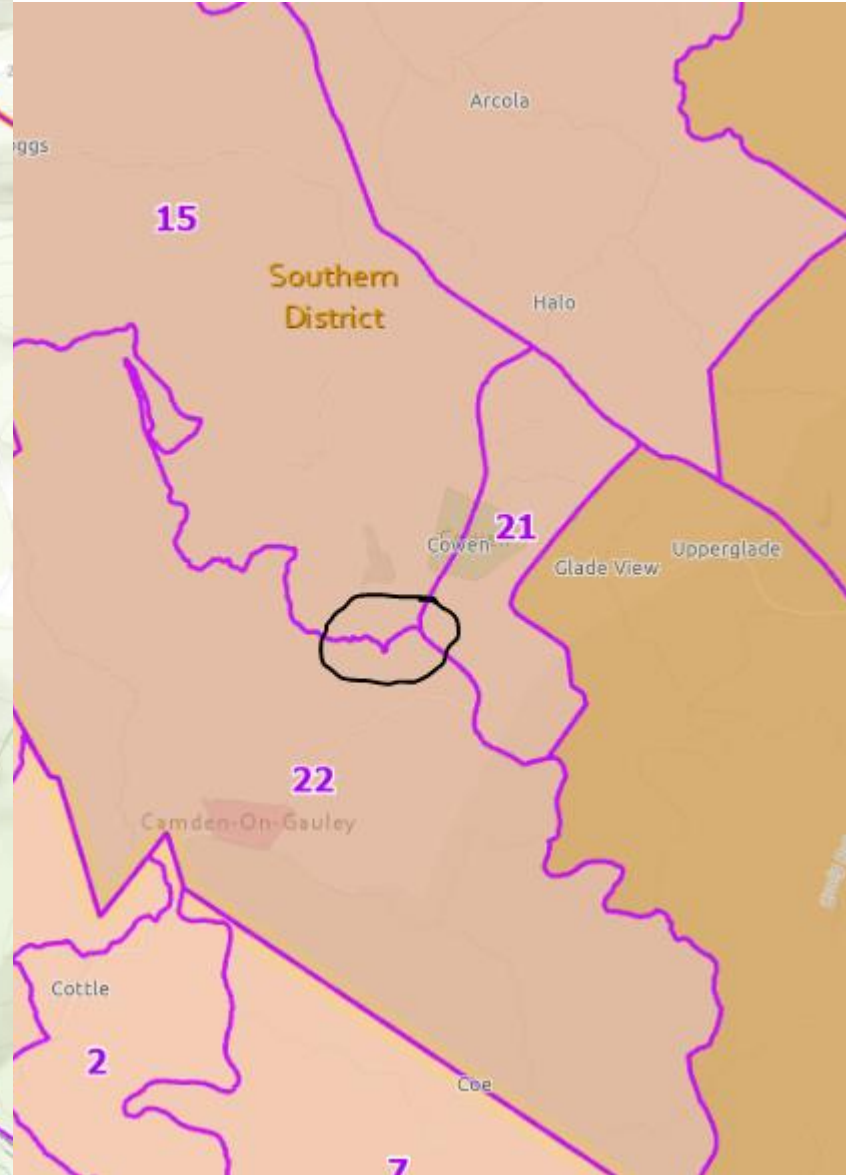
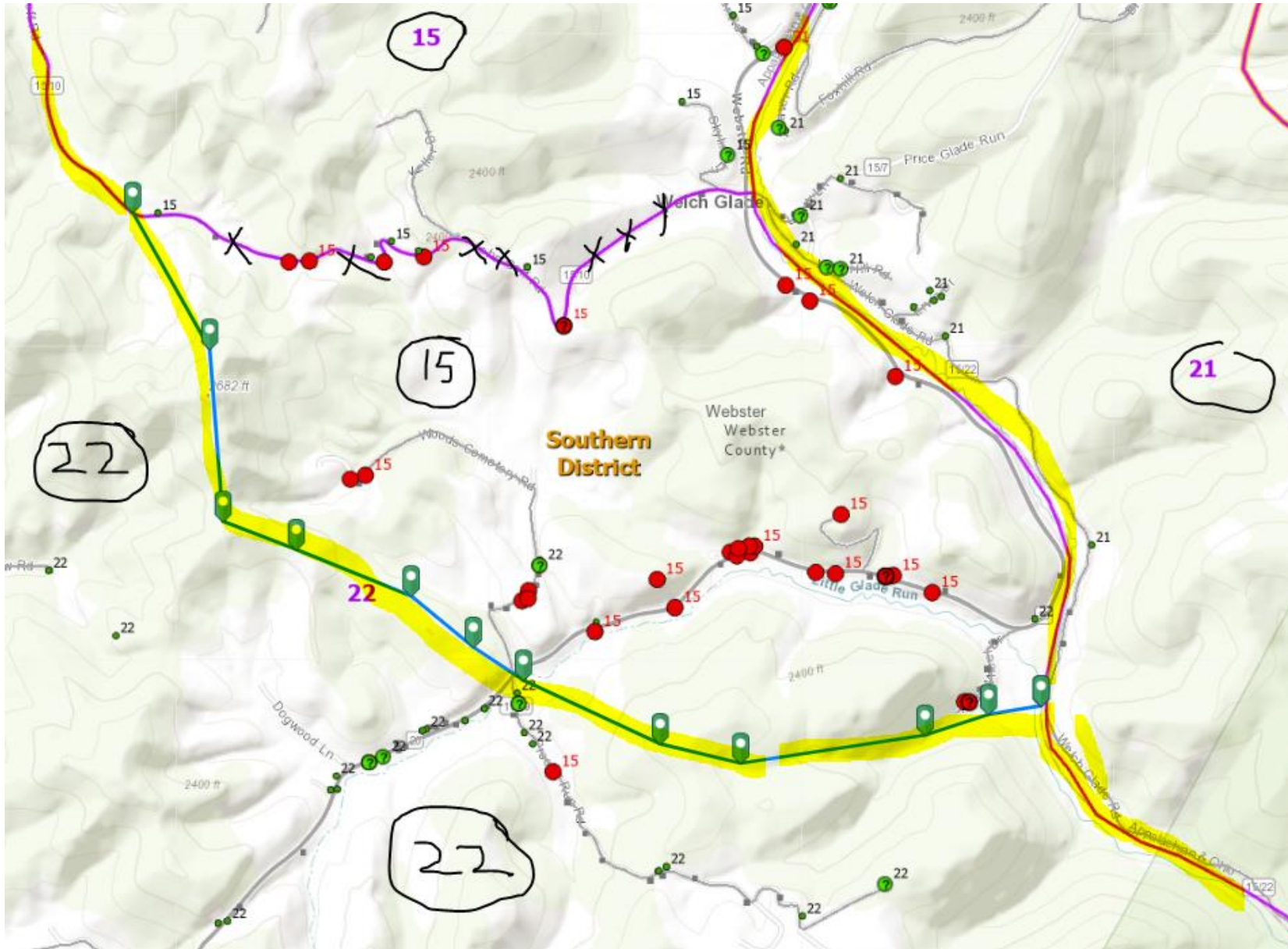


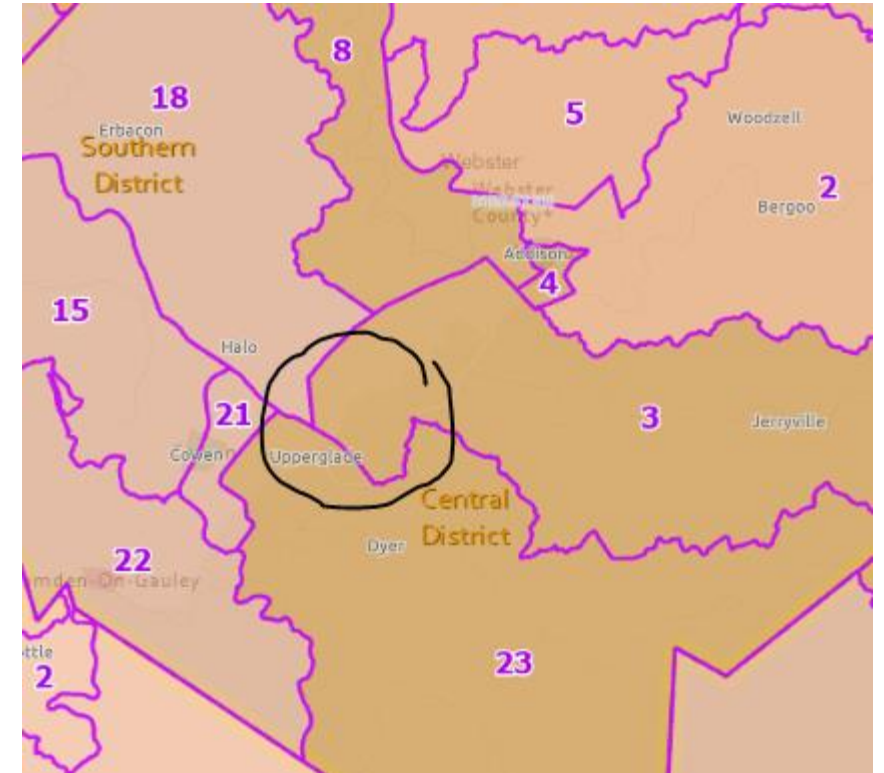
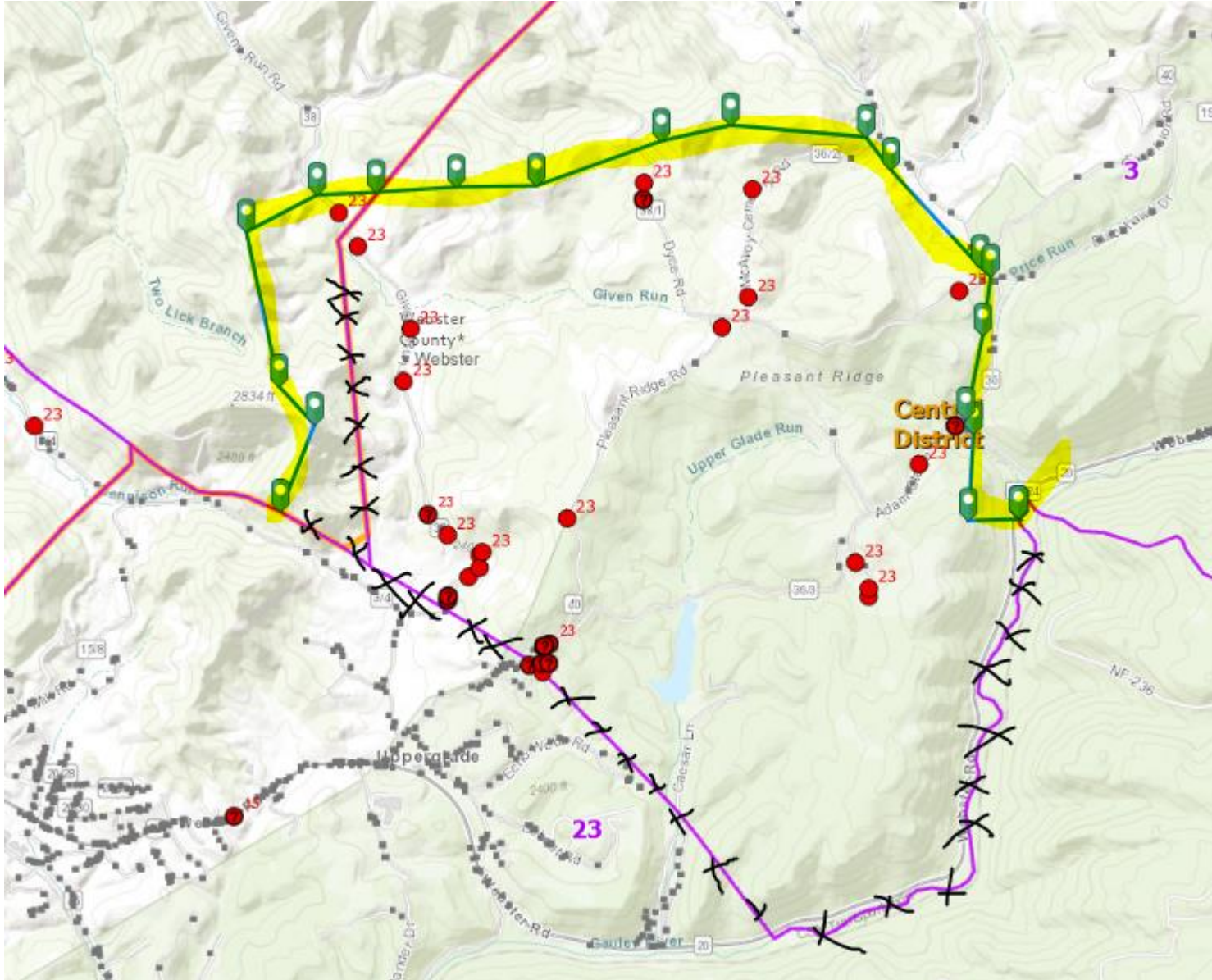
Webster COUNTY: Election District Mapping

- Geo-SVRS Voter Match: Ensure **Voter Registration Site Points** are assigned to the correct geographic precinct. Refer to mismatch spreadsheet or red dots on G-SVRS Tool (www.mapwv.gov/SVRS). Consult with E-911 office about **invalid addresses** or **spatially inaccurate addresses** that cannot be mapped to the building footprint (less accurate street address match).
- Precinct Boundary Definition Factors:
 - **E-911 Addresses & Road Centerlines**
 - All addresses of smaller roads or roads in hollows/narrow valleys should be in a single voting precinct to minimize multiple road segment definitions in the SVRS
 - Street Geocodes: Geocode matches to street ranges are problematic for road precinct boundaries
 - **Incorporated Place Boundaries** should be accurate and match precinct boundaries
 - **Topographic Ridge Boundaries.** In rural counties, typically tax district and historical magisterial district line boundaries follow topographic ridgelines.
 - **Proximity to Polling Sites.** Voter point travel time/distance to polling site of precinct
 - **Census Blocks.** Follow existing census block edge boundaries if exist
- Voting Precinct Boundary Alignment Issues/No Gaps:
 - Precinct boundaries should align coincidentally with **USGS 1:24,000-scale county boundary** – not the less accurate Census boundary
 - Precinct boundaries should align coincidentally with **magisterial district lines**

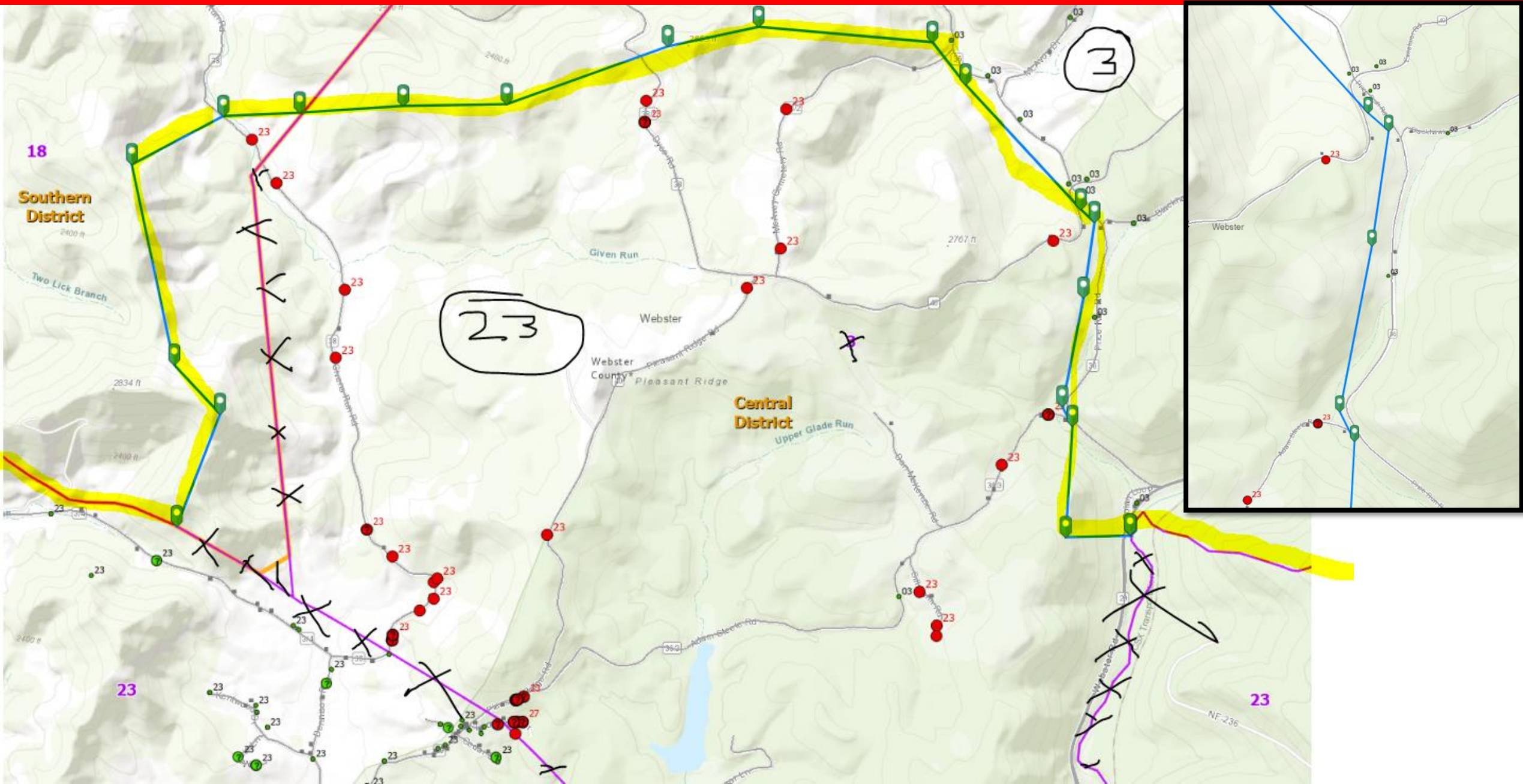
Precincts 15-21-22 Bdry



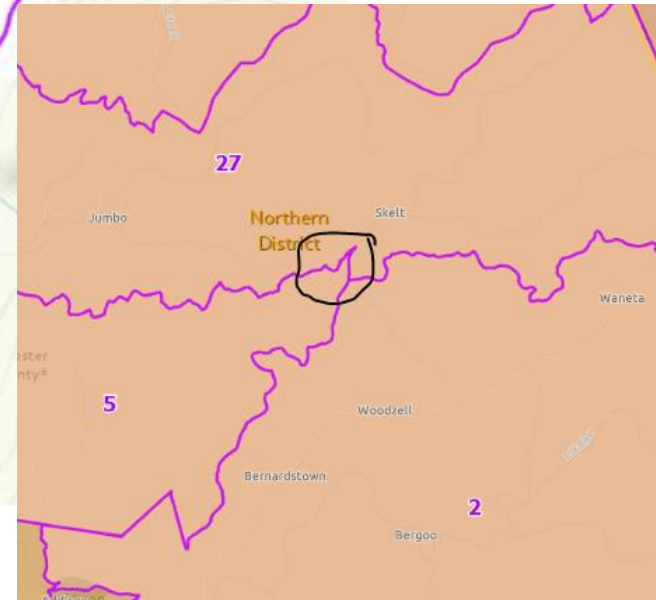
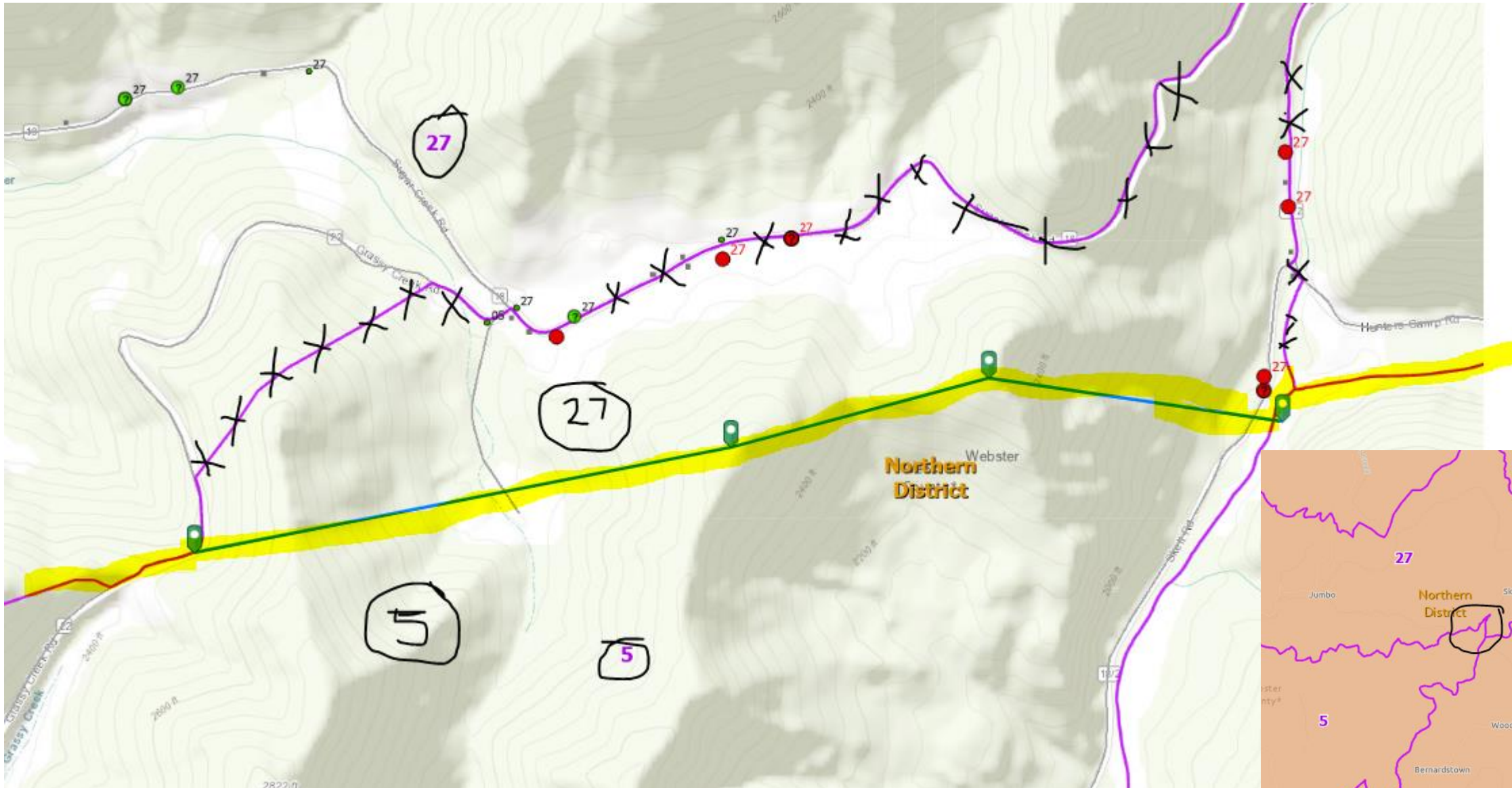
Precincts 3-23 Bdrys



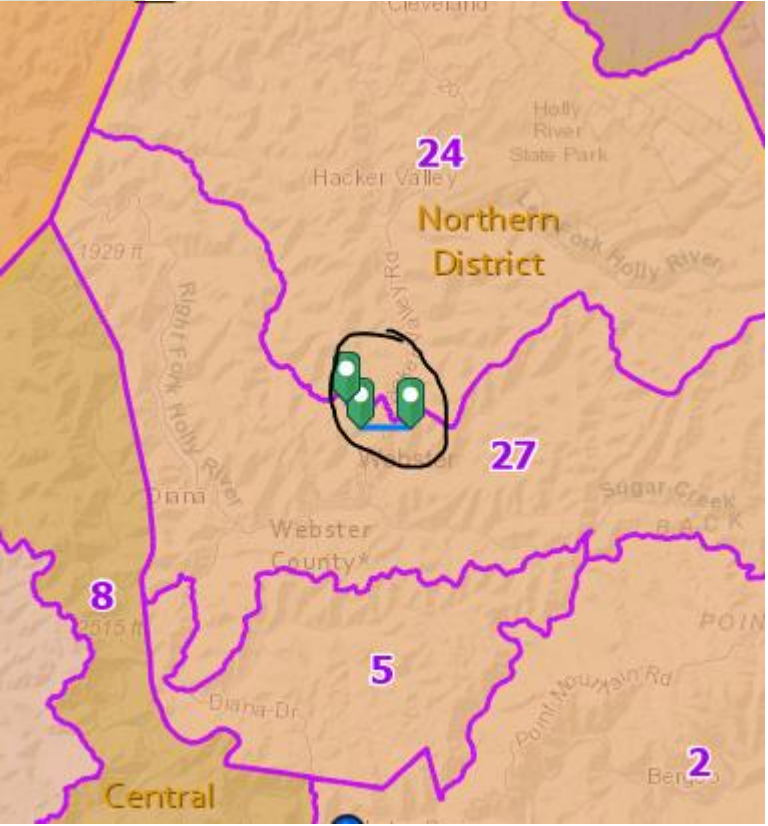
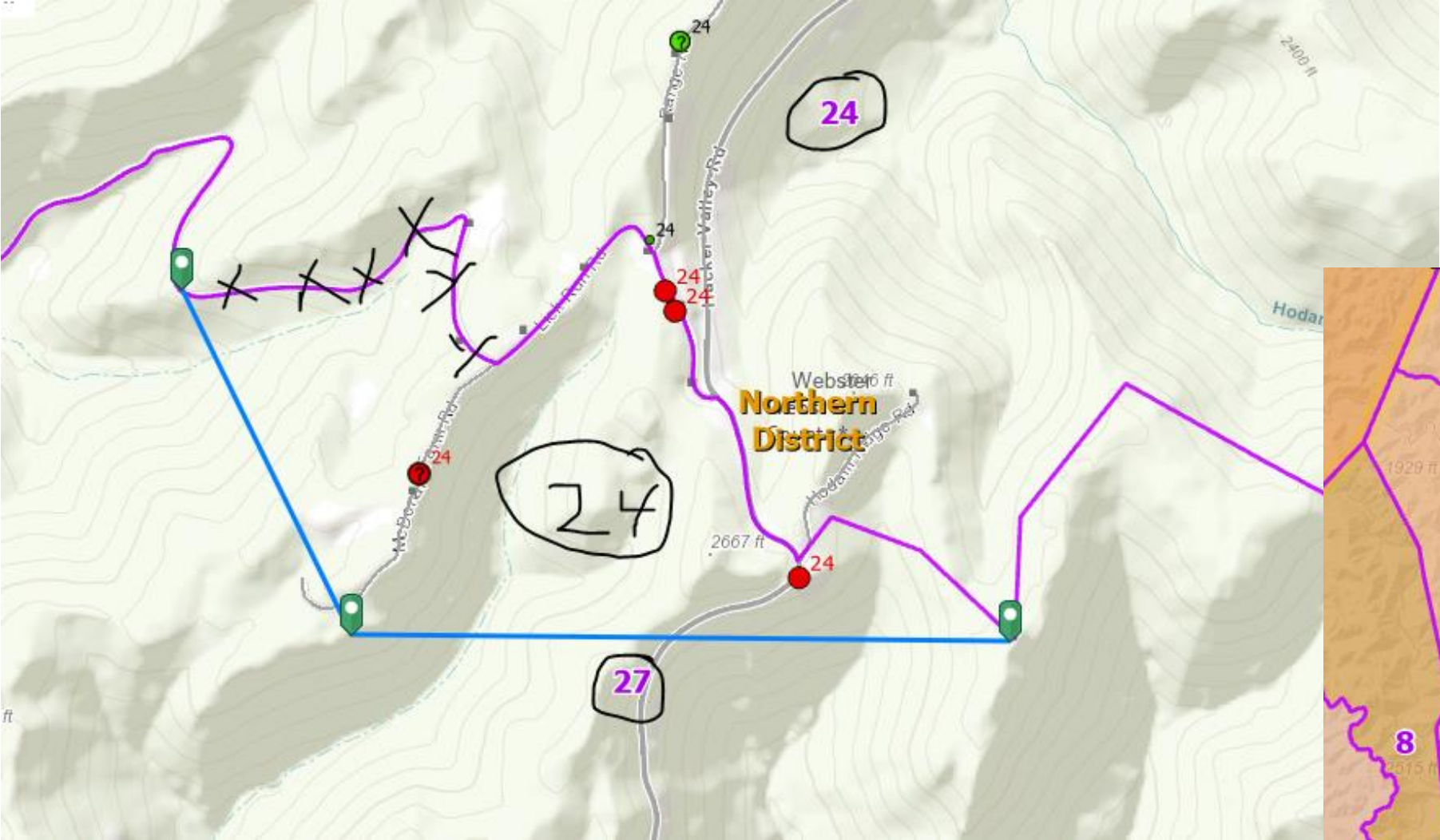
Precincts 3-23 Bdrys



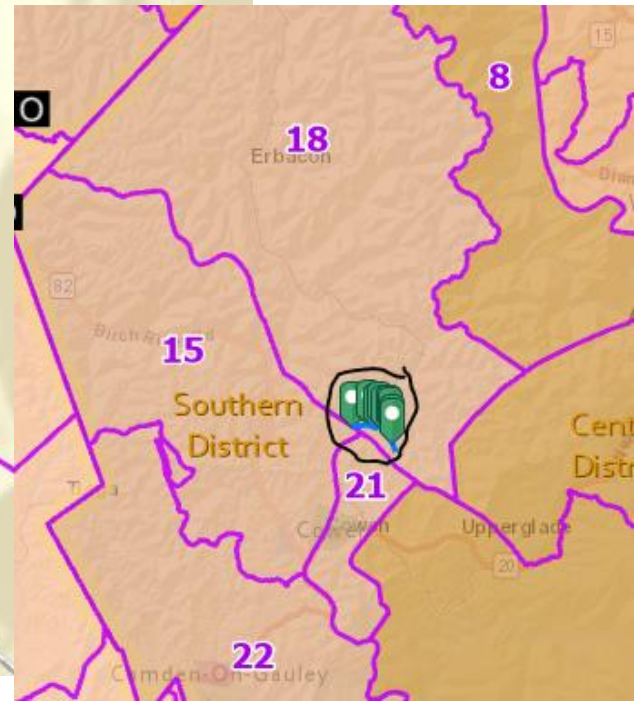
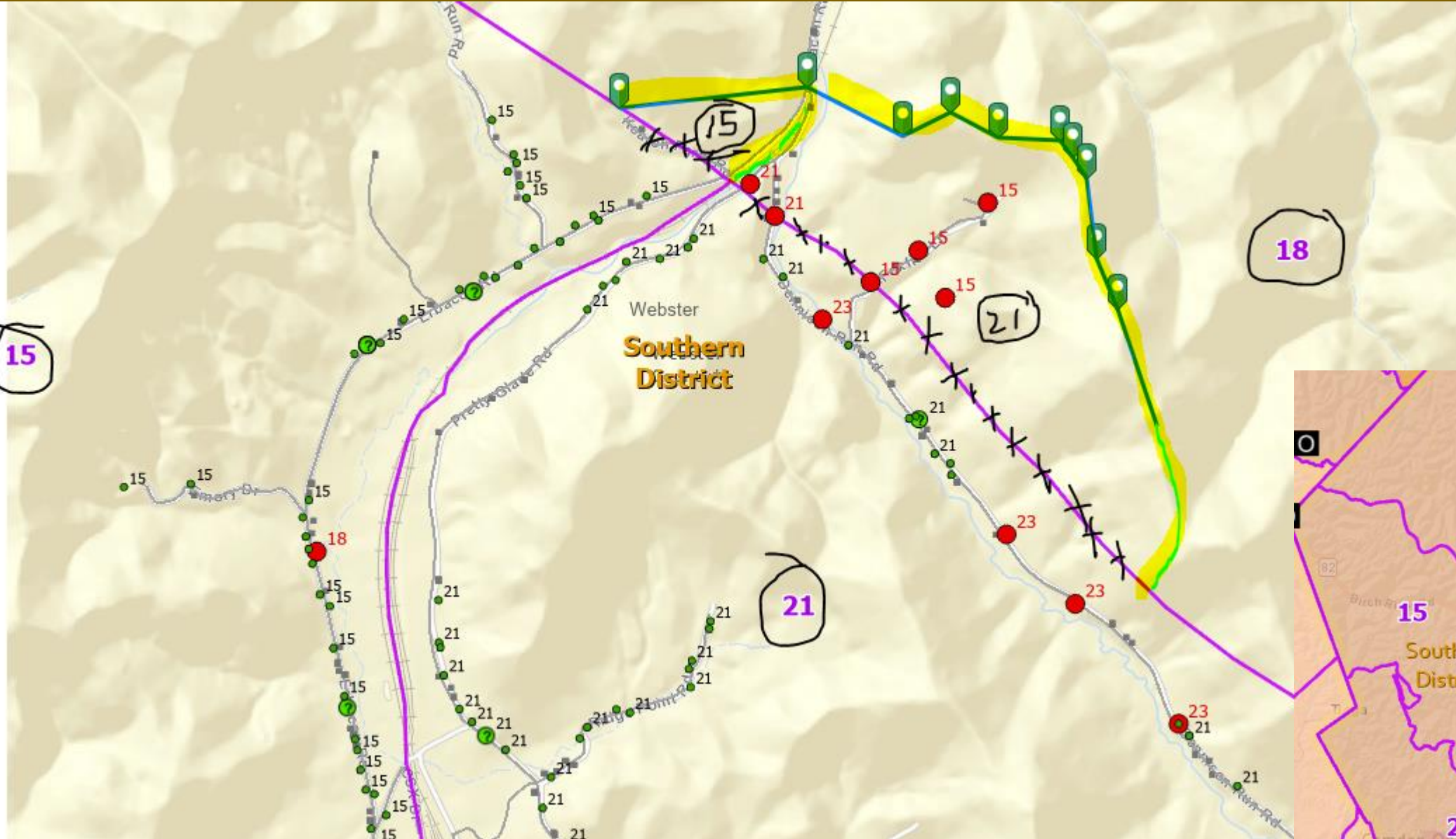
Precincts 5-27 Bdry



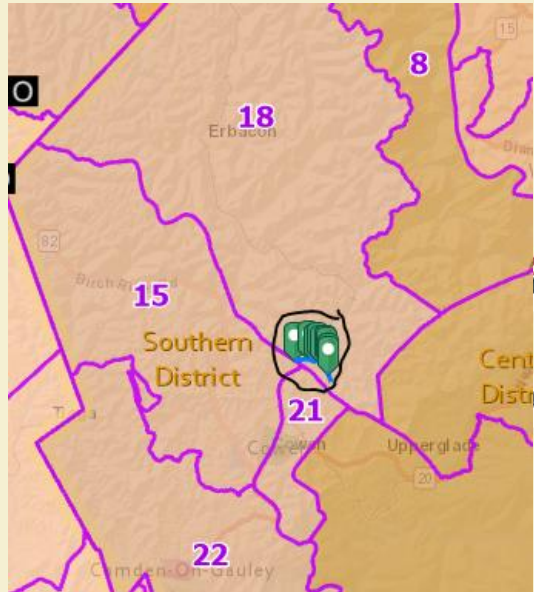
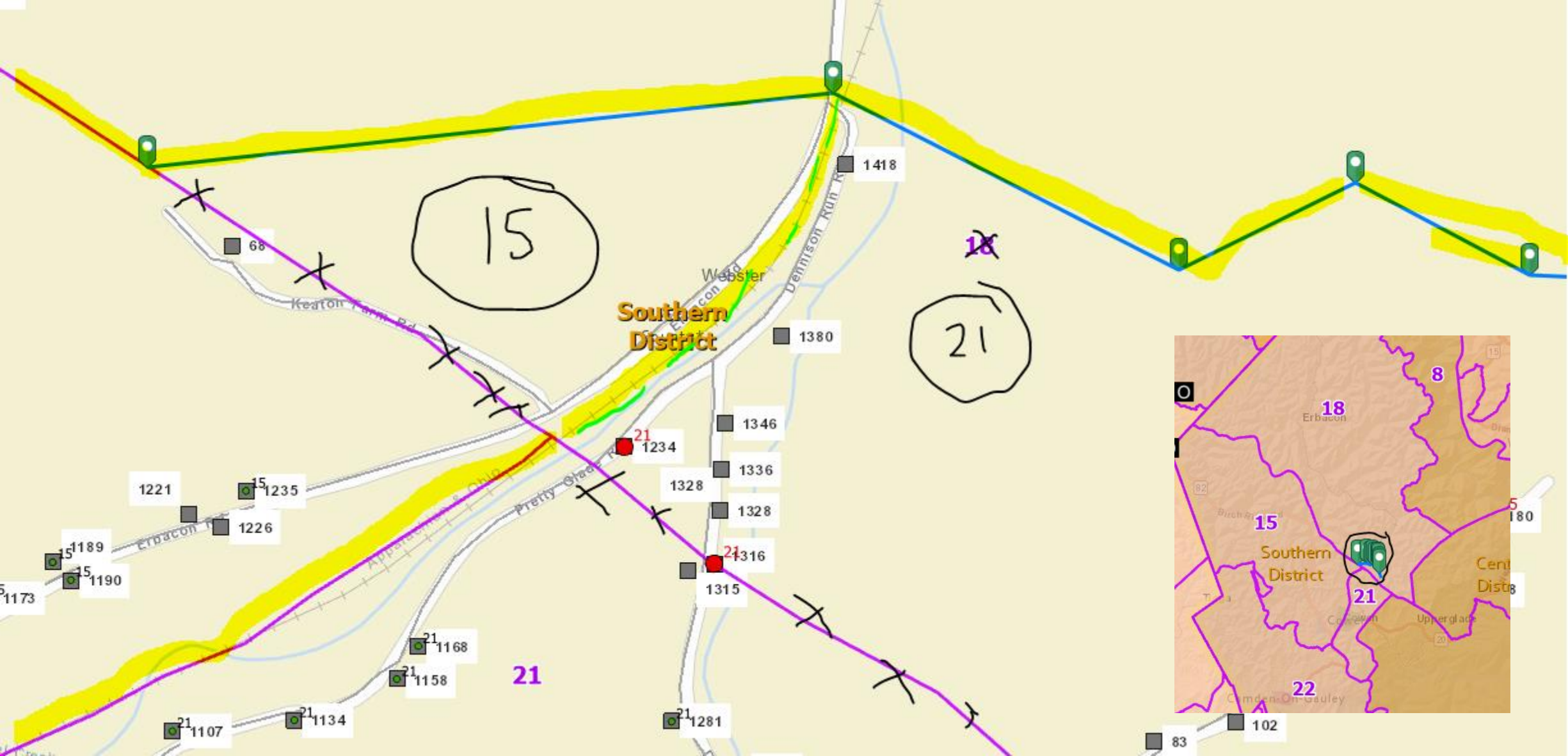
Precincts 24-27 Bdry



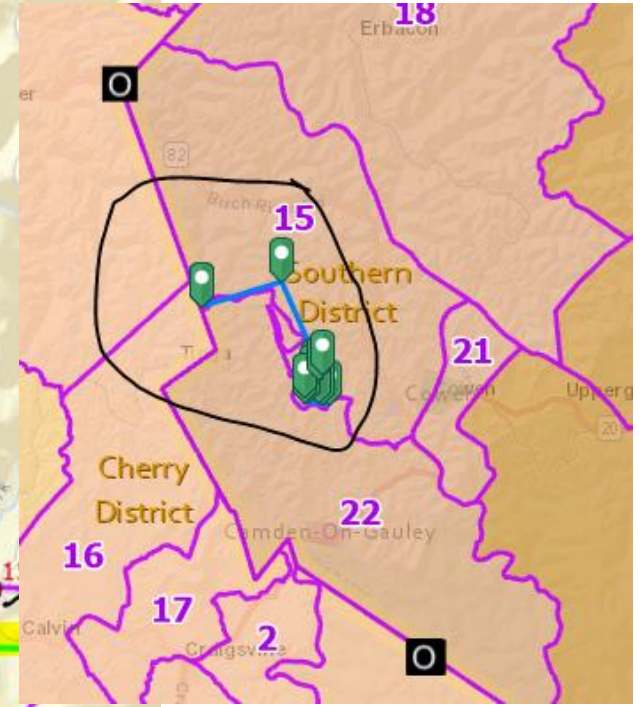
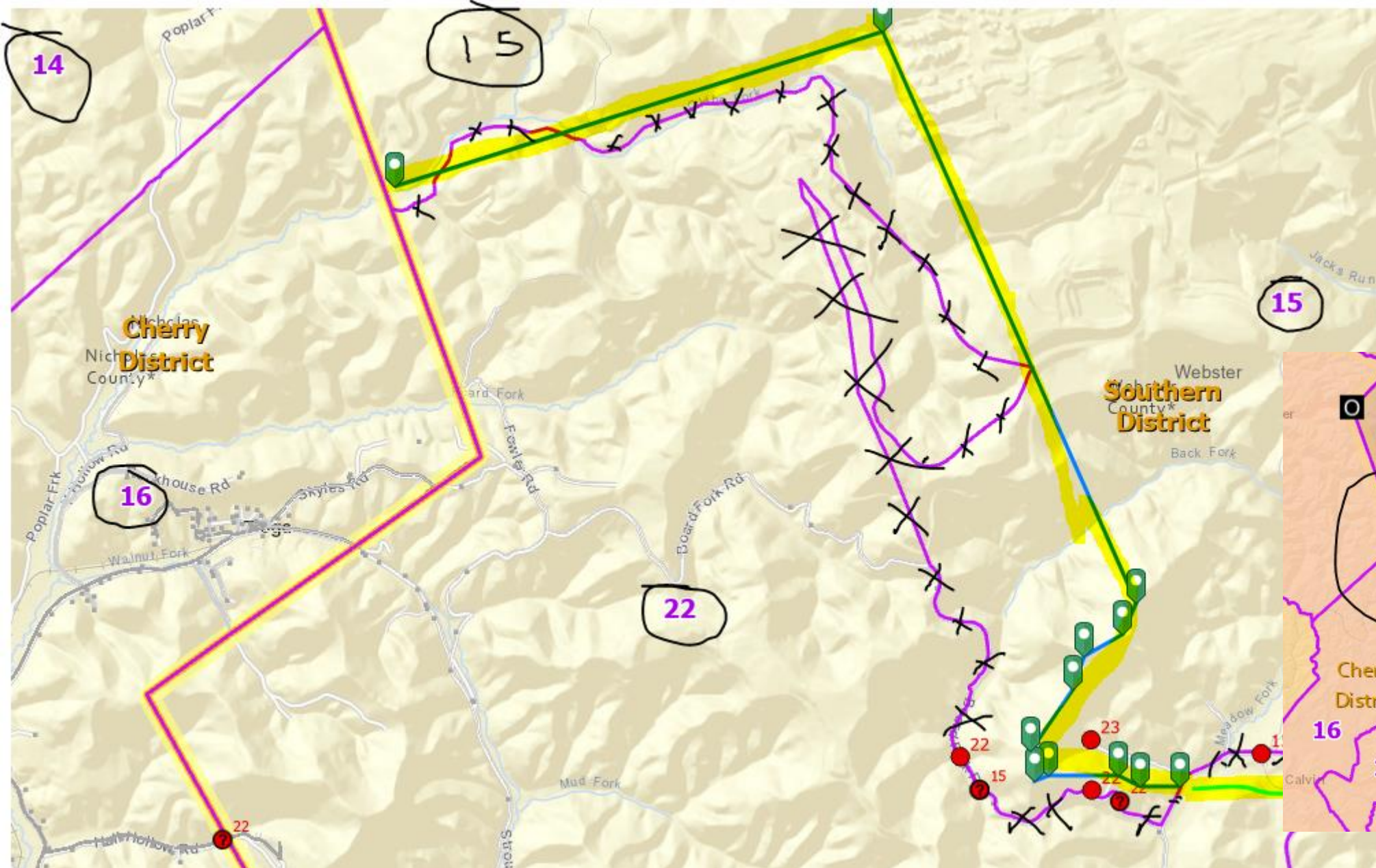
Precincts 15-21-18 Bdry



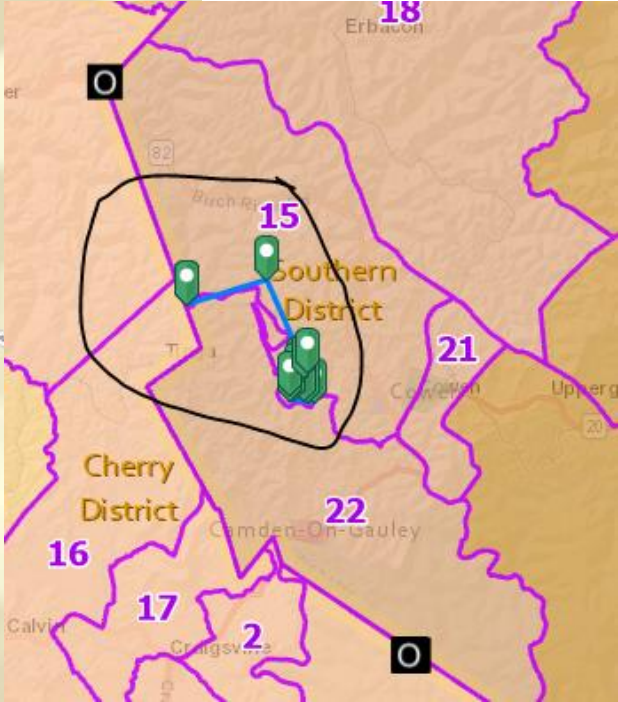
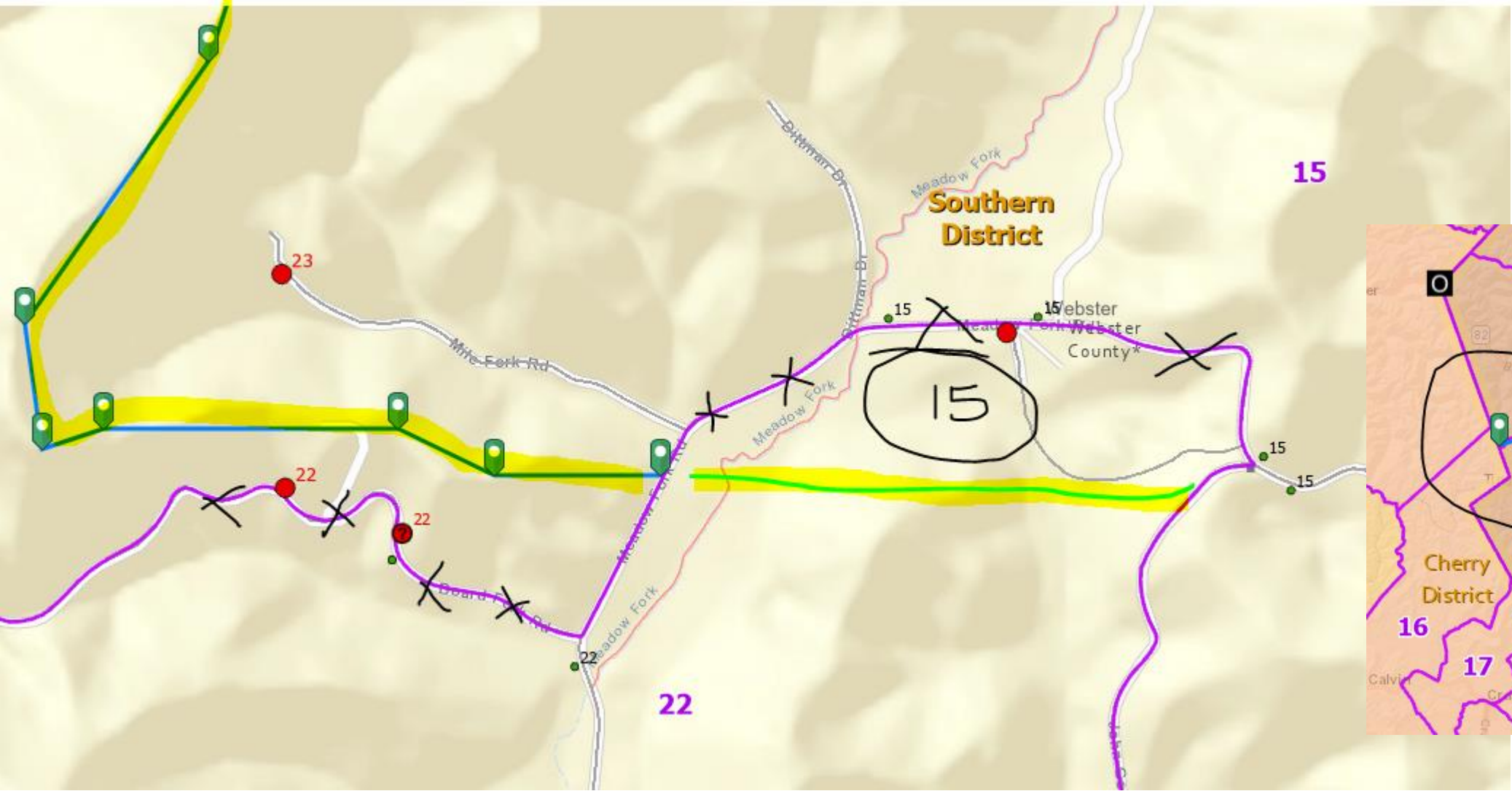
Precincts 15-21 Bdry



Precincts 15-22 Bdry



Precincts 15-22 Bdry



Precincts 24-27 Bdry

