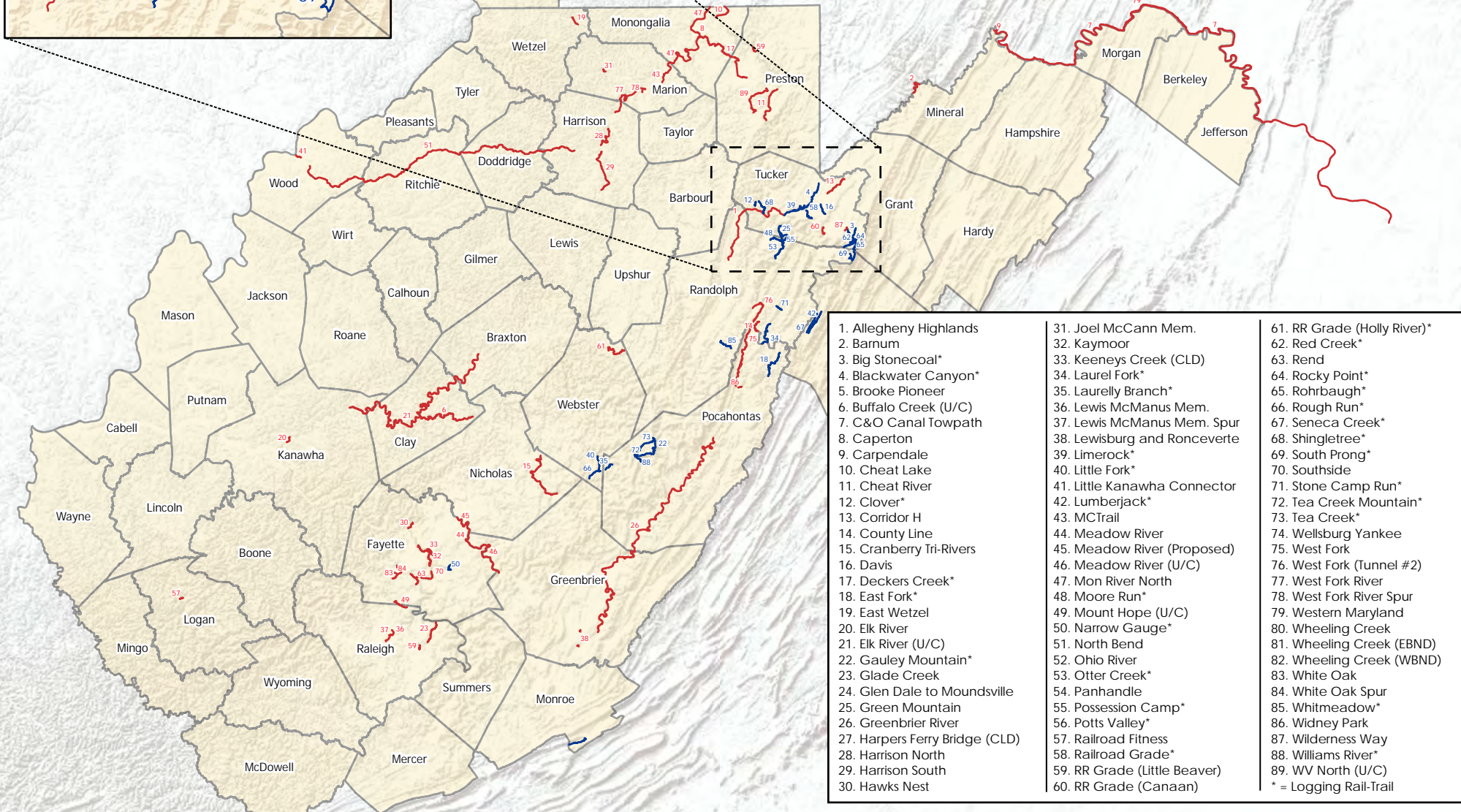
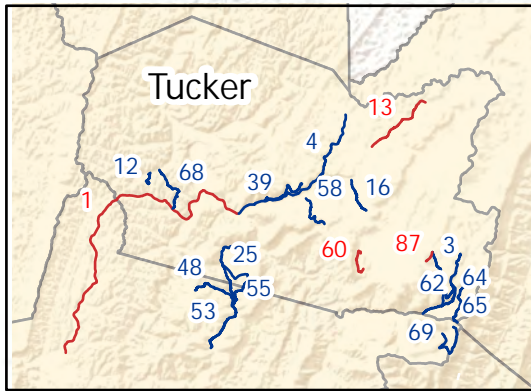
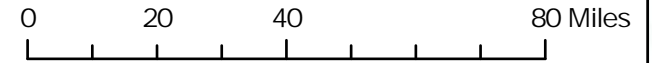


# West Virginia Rail-Trails

September 2021

— Rail-Trails (58)  
— Logging Rail-Trails (31)



- |                                |                              |                             |
|--------------------------------|------------------------------|-----------------------------|
| 1. Allegheny Highlands         | 31. Joel McCann Mem.         | 61. RR Grade (Holly River)* |
| 2. Barnum                      | 32. Kaymoor                  | 62. Red Creek*              |
| 3. Big Stonecoal*              | 33. Keeneys Creek (CLD)      | 63. Rend                    |
| 4. Blackwater Canyon*          | 34. Laurel Fork*             | 64. Rocky Point*            |
| 5. Brooke Pioneer              | 35. Laurely Branch*          | 65. Rohrbaugh*              |
| 6. Buffalo Creek (U/C)         | 36. Lewis McManus Mem.       | 66. Rough Run*              |
| 7. C&O Canal Towpath           | 37. Lewis McManus Mem. Spur  | 67. Seneca Creek*           |
| 8. Caperton                    | 38. Lewisburg and Ronceverte | 68. Shingletree*            |
| 9. Carpendale                  | 39. Limerock*                | 69. South Prong*            |
| 10. Cheat Lake                 | 40. Little Fork*             | 70. Southside               |
| 11. Cheat River                | 41. Little Kanawha Connector | 71. Stone Camp Run*         |
| 12. Clover*                    | 42. Lumberjack*              | 72. Tea Creek Mountain*     |
| 13. Corridor H                 | 43. MCTrail                  | 73. Tea Creek*              |
| 14. County Line                | 44. Meadow River             | 74. Wellsburg Yankee        |
| 15. Cranberry Tri-Rivers       | 45. Meadow River (Proposed)  | 75. West Fork               |
| 16. Davis                      | 46. Meadow River (U/C)       | 76. West Fork (Tunnel #2)   |
| 17. Deckers Creek*             | 47. Mon River North          | 77. West Fork River         |
| 18. East Fork*                 | 48. Moore Run*               | 78. West Fork River Spur    |
| 19. East Wetzel                | 49. Mount Hope (U/C)         | 79. Western Maryland        |
| 20. Elk River                  | 50. Narrow Gauge*            | 80. Wheeling Creek          |
| 21. Elk River (U/C)            | 51. North Bend               | 81. Wheeling Creek (EBND)   |
| 22. Gauley Mountain*           | 52. Ohio River               | 82. Wheeling Creek (WBND)   |
| 23. Glade Creek                | 53. Otter Creek*             | 83. White Oak               |
| 24. Glen Dale to Moundsville   | 54. Panhandle                | 84. White Oak Spur          |
| 25. Green Mountain             | 55. Possession Camp*         | 85. Whitmeadow*             |
| 26. Greenbrier River           | 56. Potts Valley*            | 86. Widney Park             |
| 27. Harpers Ferry Bridge (CLD) | 57. Railroad Fitness         | 87. Wilderness Way          |
| 28. Harrison North             | 58. Railroad Grade*          | 88. Williams River*         |
| 29. Harrison South             | 59. RR Grade (Little Beaver) | 89. WV North (U/C)          |
| 30. Hawks Nest                 | 60. RR Grade (Canaan)        | * = Logging Rail-Trail      |