
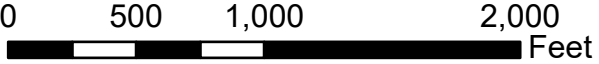


Boone - Logan County Boundary Line Adjustment

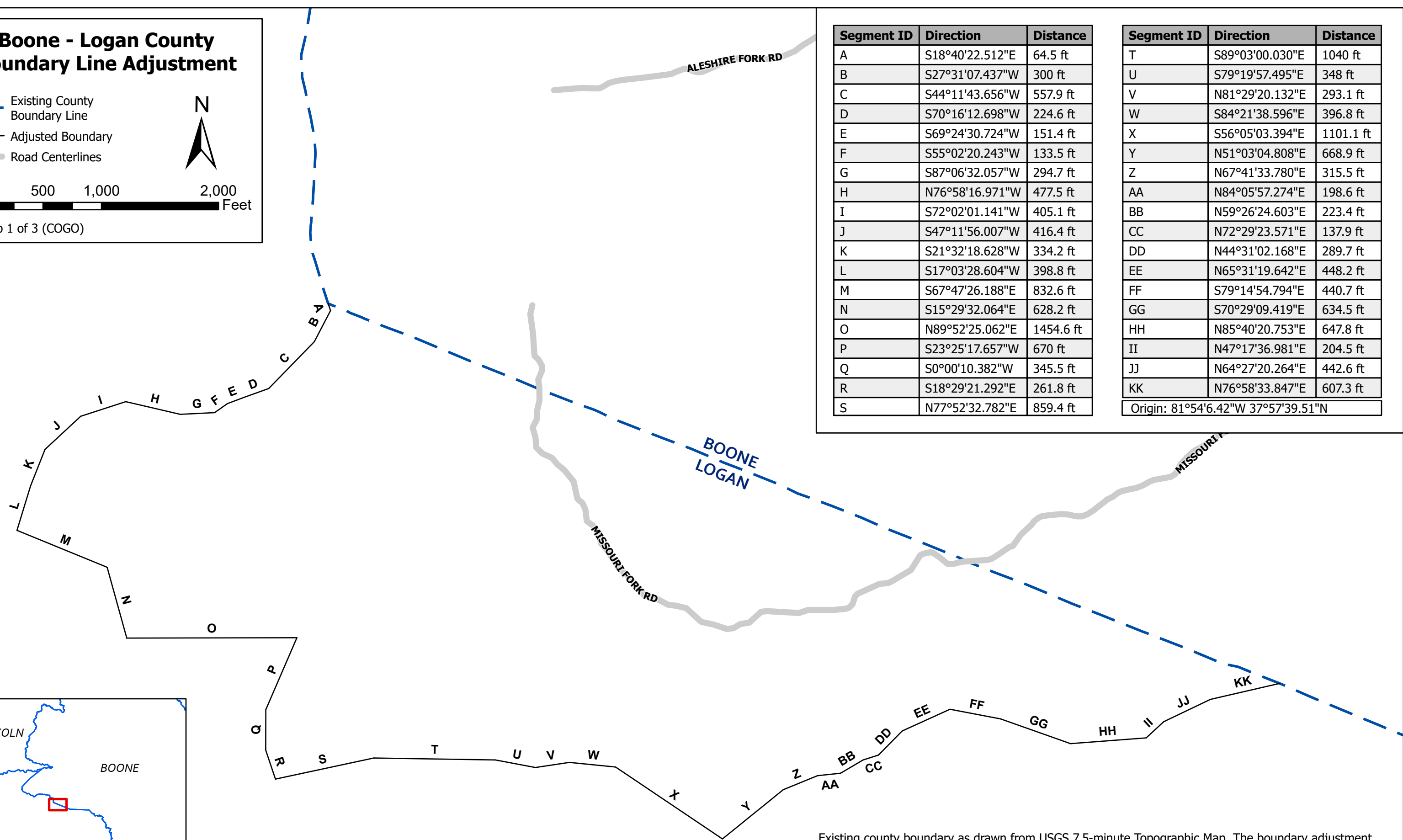
--- Existing County Boundary Line
--- Adjusted Boundary
--- Road Centerlines

Map 1 of 3 (COGO)

Segment ID	Direction	Distance
A	S18°40'22.512"E	64.5 ft
B	S27°31'07.437"W	300 ft
C	S44°11'43.656"W	557.9 ft
D	S70°16'12.698"W	224.6 ft
E	S69°24'30.724"W	151.4 ft
F	S55°02'20.243"W	133.5 ft
G	S87°06'32.057"W	294.7 ft
H	N76°58'16.971"W	477.5 ft
I	S72°02'01.141"W	405.1 ft
J	S47°11'56.007"W	416.4 ft
K	S21°32'18.628"W	334.2 ft
L	S17°03'28.604"W	398.8 ft
M	S67°47'26.188"E	832.6 ft
N	S15°29'32.064"E	628.2 ft
O	N89°52'25.062"E	1454.6 ft
P	S23°25'17.657"W	670 ft
Q	S0°00'10.382"W	345.5 ft
R	S18°29'21.292"E	261.8 ft
S	N77°52'32.782"E	859.4 ft

Segment ID	Direction	Distance
T	S89°03'00.030"E	1040 ft
U	S79°19'57.495"E	348 ft
V	N81°29'20.132"E	293.1 ft
W	S84°21'38.596"E	396.8 ft
X	S56°05'03.394"E	1101.1 ft
Y	N51°03'04.808"E	668.9 ft
Z	N67°41'33.780"E	315.5 ft
AA	N84°05'57.274"E	198.6 ft
BB	N59°26'24.603"E	223.4 ft
CC	N72°29'23.571"E	137.9 ft
DD	N44°31'02.168"E	289.7 ft
EE	N65°31'19.642"E	448.2 ft
FF	S79°14'54.794"E	440.7 ft
GG	S70°29'09.419"E	634.5 ft
HH	N85°40'20.753"E	647.8 ft
II	N47°17'36.981"E	204.5 ft
JJ	N64°27'20.264"E	442.6 ft
KK	N76°58'33.847"E	607.3 ft
Origin: 81°54'6.42"W 37°57'39.51"N		



Existing county boundary as drawn from USGS 7.5-minute Topographic Map. The boundary adjustment shown has not been surveyed and is intended to represent the approximate location of the revised boundary. The beginning point and end point of the adjusted boundary is intended to intersect the existing county boundary. The adjusted boundary was drawn using elevation ridgelines from the WVGISTC DEM 1-meter statewide elevation mosaic. Map drawn in WV State Plane South NAD83. Metes and Bounds calls (direction (QB) and distance (Ft)) calculated using ArcGIS Pro 3.0 Coordinate Geometry tools (COGO).