

# COUNTY BOUNDARY ATTESTATION

## STATE OF WEST VIRGINIA

This certification supports West Virginia's participation in the **United States Census Bureau Boundary and Annexation Survey (BAS)** and related redistricting coordination programs including the **Block Boundary Suggestion Project (BBSP)**.

The **County Commission** listed below certifies the municipal boundary information submitted as part of this census geographic submission.

### 1. County Information

County Name: Braxton

Effective Date of Boundaries Reflected: 5/20/2026

Date of Submission: \_\_\_\_\_

### 2. Municipalities Included in This Submission

The municipalities listed below are included in this county submission to the **U.S. Census Bureau**.

Municipality	GEOID (if known)	Boundary Update Submitted	Authorization Source County/Municipal/ Both
Burnsville	5411716	Yes	County
Flatwoods	5427868	Yes	County
Gassaway	5430220	Yes	County
Sutton	5478580	Yes	County

*(Attach additional pages if necessary.)*

### 3. County Commission Certification

The County Commission of Braxton County certifies that the municipal boundaries represented in this submission reflect the best available county records of municipal corporate limits, annexations, and boundary adjustments derived from county tax mapping records, GIS records, annexation filings, and other available documentation maintained by the county. In cases where original annexation or boundary documentation cannot be located, the County Commission certifies that the boundaries represented reflect the most accurate boundary location available based on county records and GIS data.

### 4. County Technical Points of Contact

<b>Name:</b> Sheila Butler	<b>Office / Role</b> Chief Deputy Clerk
<b>Email:</b> braxtoncovoter@yahoo.com	<b>Phone</b> (304) 765-2833

### 5. Data Included in Submission

☒ GIS Shapefile

☒ Boundary Map (PDF)

☒ Supporting Documentation

☐ Municipal Attestation Letters

Projection / Coordinate System (if digital): UTM Zone 17 North

File Name(s): BAS26\_54007\_WholeEntity\_inc-places-Braxton.shp

### 6. County Commission Approval

Chair, County Commission

Signature: Lisa Mace Gordon


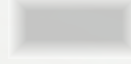
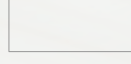
Printed Name: Lisa Mace Gordon

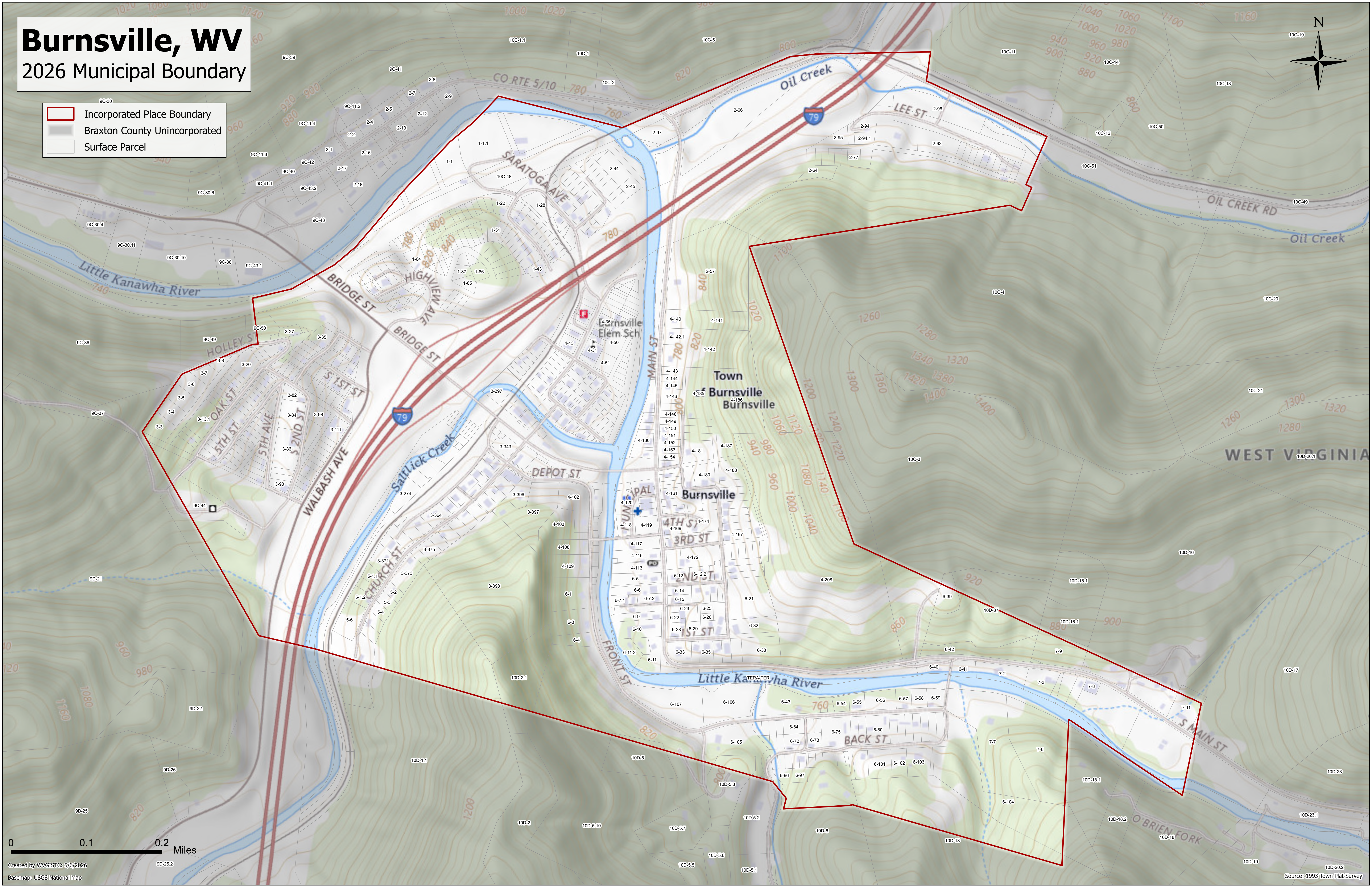
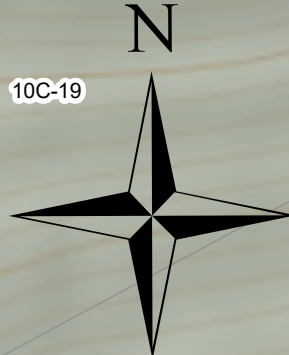
Date: 5-20-26



# Burnsville, WV

## 2026 Municipal Boundary

-  Incorporated Place Boundary
-  Braxton County Unincorporated
-  Surface Parcel



0 0.1 0.2 Miles





493.09 ACRES +/- (GROSS)  
 -64.15 ACRES +/- (1-79 R-O-W)  
 -14.79 ACRES +/- (RT 5 R-O-W)  
 414.15 ACRES +/- (NET)

THE ASTRONOMIC NORTH MERIDIAN  
 IS BASED ON A POLARIS OBSERVATION  
 DATED 2/4/93.

GRAPHIC SCALE: 1" = 300'-FEET

- LEGEND**
- 4" x 24" CONCRETE MONUMENT WITH ALUMINUM CAP (SET)
  - 4" x 30" CONCRETE MONUMENT WITH ALUMINUM CAP (SET)
  - WITNESS MONUMENT
  - CALCULATED POINT
  - EDGE OF RIVER, OREX
  - 6" x 6" CONCRETE R-O-W MONUMENT
  - EDGE OF RIGHT-OF-WAY (R-O-W)
  - EXTERIOR CORPORATE BOUNDARY LINES
  - INTERIOR CORPORATE BOUNDARY LINES
  - INTERIOR ADDITION BOUNDARY LINES AND TIE LINES
  - C/L RAILROAD (EXISTING)
  - C/L RAILROAD (PLANNED)
  - 5/8" x 30" REBAR WITH ALUMINUM CAP (SET)
  - 1/2" RODS (TYPICAL)
  - HEMPSTOCK (PINK)
  - EXISTING ROADS
  - APPROX. LOCATION OF STREETS

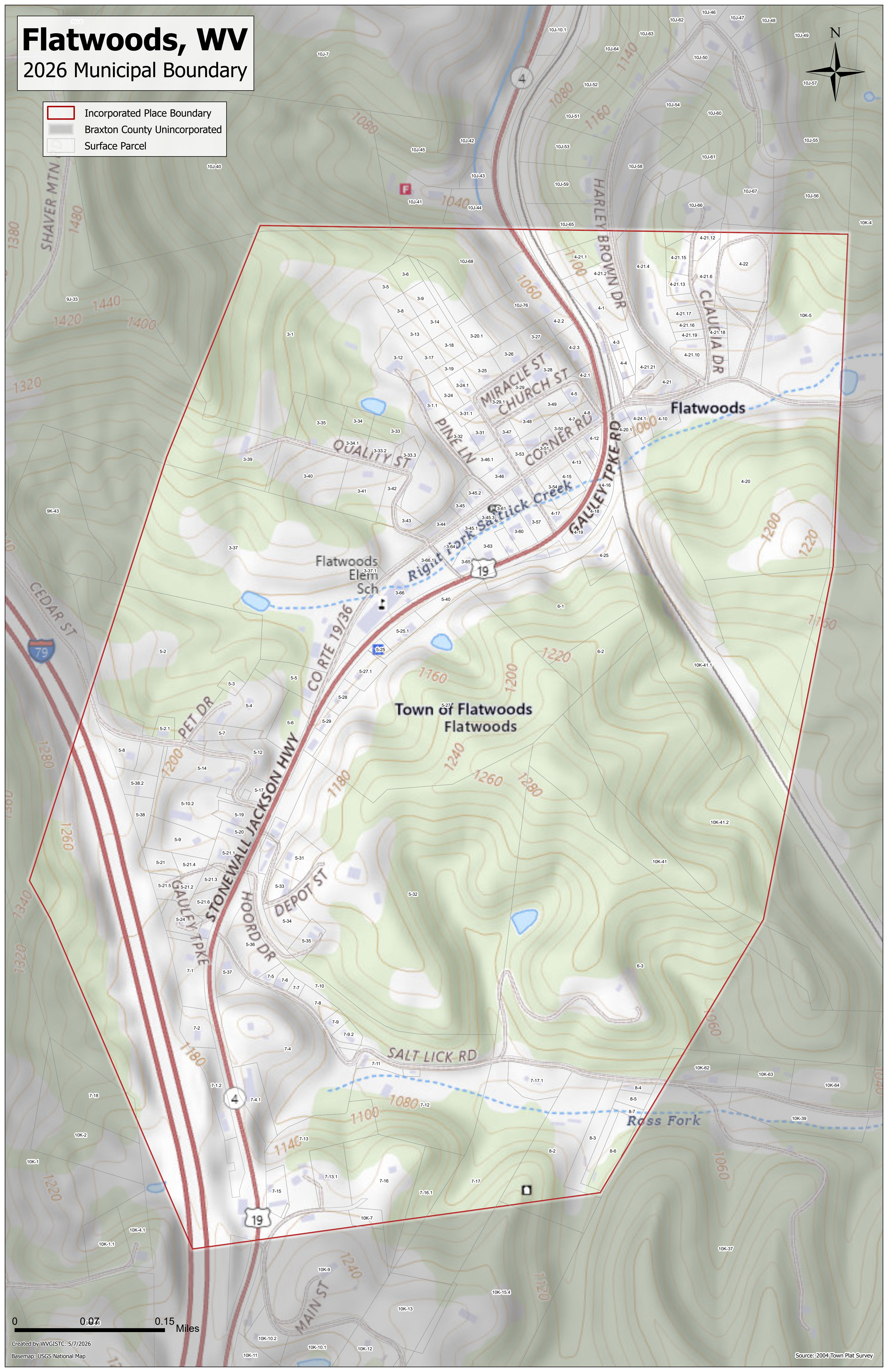
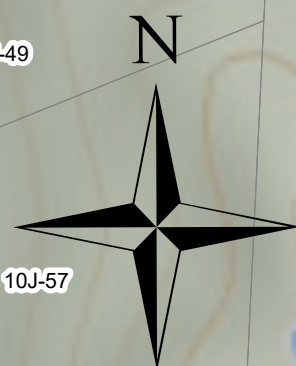
37-38	N 72-18-36 W	356.69'	144-145	N 43-24-00 E	290.77'
38-39	N 61-22-06 W	490.29'	145-146	N 49-49-48 E	490.29'
39-40	S 08-55-54 W	215.56'	146-147	N 43-42-12 E	215.56'
40-41	S 3-59-42 E	803.45'	147-148	S 75-57-42 E	803.45'
41-42	S 06-00-18 W	1275.81'	148-149	N 68-46-30 E	1275.81'
39-32	N 72-21-24 W	512.54'	149-150	N 68-42-24 E	512.54'
			150-151	N 68-42-24 E	174.56'
			151-152	N 65-25-54 W	308.72'
			152-153	S 23-19-42 E	368.69'
			153-154	S 63-37-12 E	177.81'
			154-155	S 23-19-42 E	90.49'
			155-156	S 80-49-36 W	1645.81'
			156-157	S 19-37-06 E	2206.93'
			157-158	S 65-36-54 E	2874.06'
			158-159	S 11-25-54 W	304.96'
			159-160	S 02-25-48 W	955.96'
			160-161	S 08-52-12 W	474.78'
			161-162	S 08-52-12 W	1536.13'
			162-163	N 74-04-12 W	1023.47'
			163-164	S 05-52-12 W	76.00'
			164-165	N 35-04-00 W	149.88'
			165-166	N 74-04-12 W	3062.63'
			166-167	N 39-00-36 E	206.89'
			167-168	N 43-24-00 E	490.29'
			168-169	N 49-49-48 E	215.56'
			169-170	N 43-42-12 E	257.63'
			170-171	N 75-57-42 E	803.45'
			171-172	N 68-46-30 E	1275.81'
			172-173	N 68-42-24 E	512.54'
			173-174	N 68-42-24 E	174.56'
			174-175	N 65-25-54 W	308.72'
			175-176	S 23-19-42 E	368.69'
			176-177	S 63-37-12 E	177.81'
			177-178	S 23-19-42 E	90.49'
			178-179	S 80-49-36 W	1645.81'
			179-180	S 19-37-06 E	2206.93'
			180-181	S 65-36-54 E	2874.06'
			181-182	S 11-25-54 W	304.96'
			182-183	S 02-25-48 W	955.96'
			183-184	S 08-52-12 W	474.78'
			184-185	S 08-52-12 W	1536.13'
			185-186	N 74-04-12 W	1023.47'
			186-187	S 05-52-12 W	76.00'
			187-188	N 35-04-00 W	149.88'
			188-189	N 74-04-12 W	3062.63'
			189-190	N 39-00-36 E	206.89'
			190-191	N 43-24-00 E	490.29'
			191-192	N 49-49-48 E	215.56'
			192-193	N 43-42-12 E	257.63'
			193-194	N 75-57-42 E	803.45'
			194-195	N 68-46-30 E	1275.81'
			195-196	N 68-42-24 E	512.54'
			196-197	N 68-42-24 E	174.56'
			197-198	N 65-25-54 W	308.72'
			198-199	S 23-19-42 E	368.69'
			199-200	S 63-37-12 E	177.81'
			200-201	S 23-19-42 E	90.49'
			201-202	S 80-49-36 W	1645.81'
			202-203	S 19-37-06 E	2206.93'
			203-204	S 65-36-54 E	2874.06'
			204-205	S 11-25-54 W	304.96'
			205-206	S 02-25-48 W	955.96'
			206-207	S 08-52-12 W	474.78'
			207-208	S 08-52-12 W	1536.13'
			208-209	N 74-04-12 W	1023.47'
			209-210	S 05-52-12 W	76.00'
			210-211	N 35-04-00 W	149.88'
			211-212	N 74-04-12 W	3062.63'
			212-213	N 39-00-36 E	206.89'
			213-214	N 43-24-00 E	490.29'
			214-215	N 49-49-48 E	215.56'
			215-216	N 43-42-12 E	257.63'
			216-217	N 75-57-42 E	803.45'
			217-218	N 68-46-30 E	1275.81'
			218-219	N 68-42-24 E	512.54'
			219-220	N 68-42-24 E	174.56'
			220-221	N 65-25-54 W	308.72'
			221-222	S 23-19-42 E	368.69'
			222-223	S 63-37-12 E	177.81'
			223-224	S 23-19-42 E	90.49'
			224-225	S 80-49-36 W	1645.81'
			225-226	S 19-37-06 E	2206.93'
			226-227	S 65-36-54 E	2874.06'
			227-228	S 11-25-54 W	304.96'
			228-229	S 02-25-48 W	955.96'
			229-230	S 08-52-12 W	474.78'
			230-231	S 08-52-12 W	1536.13'
			231-232	N 74-04-12 W	1023.47'
			232-233	S 05-52-12 W	76.00'
			233-234	N 35-04-00 W	149.88'
			234-235	N 74-04-12 W	3062.63'
			235-236	N 39-00-36 E	206.89'
			236-237	N 43-24-00 E	490.29'
			237-238	N 49-49-48 E	215.56'
			238-239	N 43-42-12 E	257.63'
			239-240	N 75-57-42 E	803.45'
			240-241	N 68-46-30 E	1275.81'
			241-242	N 68-42-24 E	512.54'
			242-243	N 68-42-24 E	174.56'
			243-244	N 65-25-54 W	308.72'
			244-245	S 23-19-42 E	368.69'
			245-246	S 63-37-12 E	177.81'
			246-247	S 23-19-42 E	90.49'
			247-248	S 80-49-36 W	1645.81'
			248-249	S 19-37-06 E	2206.93'
			249-250	S 65-36-54 E	2874.06'
			250-251	S 11-25-54 W	304.96'
			251-252	S 02-25-48 W	955.96'
			252-253	S 08-52-12 W	474.78'
			253-254	S 08-52-12 W	1536.13'
			254-255	N 74-04-12 W	1023.47'
			255-256	S 05-52-12 W	76.00'
			256-257	N 35-04-00 W	149.88'
			257-258	N 74-04-12 W	3062.63'
			258-259	N 39-00-36 E	206.89'
			259-260	N 43-24-00 E	490.29'
			260-261	N 49-49-48 E	215.56'
			261-262	N 43-42-12 E	257.63'
			262-263	N 75-57-42 E	803.45'
			263-264	N 68-46-30 E	1275.81'
			264-265	N 68-42-24 E	512.54'
			265-266	N 68-42-24 E	174.56'
			266-267	N 65-25-54 W	308.72'
			267-268	S 23-19-42 E	368.69'
			268-269	S 63-37-12 E	177.81'
			269-270	S 23-19-42 E	90.49'
			270-271	S 80-49-36 W	1645.81'
			271-272	S 19-37-06 E	2206.93'
			272-273	S 65-36-54 E	2874.06'
			273-274	S 11-25-54 W	304.96'
			274-275	S 02-25-48 W	955.96'
			275-276	S 08-52-12 W	474.78'
			276-277	S 08-52-12 W	1536.13'
			277-278	N 74-04-12 W	1023.47'
			278-279	S 05-52-12 W	76.00'
			279-280	N 35-04-00 W	149.88'
			280-281	N 74-04-12 W	3062.63'
			281-282	N 39-00-36 E	206.89'
			282-283	N 43-24-00 E	490.29'
			283-284	N 49-49-48 E	215.56'
			284-285	N 43-42-12 E	257.63'
			285-286	N 75-57-42 E	803.45'
			286-287	N 68-46-30 E	1275.81'
			287-288	N 68-42-24 E	512.54'
			288-289	N 68-42-24 E	174.56'
			289-290	N 65-25-54 W	308.72'
			290-291	S 23-19-42 E	368.69'
			291-292	S 63-37-12 E	177.81'
			292-293	S 23-19-42 E	90.49'
			293-294	S 80-49-36 W	1645.81'
			294-295	S 19-37-06 E	2206.93'
			295-296	S 65-36-54 E	2874.06'
			296-297	S 11-25-54 W	304.96'
			297-298	S 02-25-48 W	955.96'
			298-299	S 08-52-12 W	474.78'
			299-300	S 08-52-12 W	1536.13'
			300-301	N 74-04-12 W	1023.47'
			301-302	S 05-52-12 W	76.00'
			302-303	N 35-04-00 W	149.88'
			303-304	N 74-04-12 W	3062.63'
			304-305	N 39-00-36 E	206.89'
			305-306	N 43-24-00 E	490.29'
			306-307	N 49-49-48 E	215.56'
			307-308	N 43-42-12 E	257.63'
			308-309	N 75-57-42 E	803.45'
			309-310	N 68-46-30 E	1275.81'
			310-311	N 68-42-24 E	512.54'
			311-312	N 68-42-24 E	174.56'
			312-313	N 65-25-54 W	308.72'
			313-314	S 23-19-42 E	368.69'
			314-315	S 63-37-12 E	177.81'
			315-316	S 23-19-42 E	90.49'
			316-317	S 80-49-36 W	1645.81'
			317-318	S 19-37-06 E	2206.93'
			318-319	S 65-36-54 E	2874.06'
			319-320	S 11-25-54 W	304.96'
			320-321	S 02-25-48 W	955.96'
			321-322	S 08-52-12 W	474.78'
			322-323	S 08-52-12 W	1536.13'
			323-324	N 74-04-12 W	1023.47'
			324-325	S 05-52-12 W	76.00'
			325-326	N 35-04-00 W	149.88'
			326-327	N 74-04-12 W	3062.63'
			327-328	N 39-00-36 E	206.89'
			328-329	N 43-24-00 E	490.29'
			329-330	N 49-49-48 E	215.56'
			330-331	N 43-42-12 E	257.63'
			331-332	N 75-57-42 E	803.45'
			332-333	N 68-46-30 E	1275.81'
			333-334	N 68-42-24 E	512.54'
			334-335	N 68-42-24 E	174.56'
			335-336	N 65-25-54 W	308.72'
			336-337	S 23-19-42 E	368.69'
			337-338	S 63-37-12 E	177.81'
			338-339	S 23-19-42 E	90.49'
			339-340	S 80-49-36 W	1645.81'
			340-341	S 19-37-06 E	2206.93'
			341-342	S 65-36-54 E	2874.06'
			342-343	S 11-25-54 W	304.96'
			343-344	S 02-25-48 W	955.96'
			344-345	S 08-52-12 W	474.78'
			345-346	S 08-52-12 W	1536.13'
			346-347	N 74-04-12 W	1023.47'
			347-348	S 05-52-12 W	76.00'
			348-349	N 35-04-00 W	149.88'
			349-350	N 74-04-12 W	3062.63'
			350-351	N 39-00-36 E	206.89'
			351-352	N 43-24-00 E	490.29'
			352-353	N 49-49-48 E	215.56'
			353-354	N 43-42-12 E	257.63'
			354-355	N 75-57-42 E	803.45'
			355-356	N 68-46-30 E	1275.81'
			356-357	N 68-42-24 E	512.54'
			357-358	N 68-42-24 E	174.56'
			358-359	N 65-25-54 W	308.72'
			359-360	S 23-19-42 E	368.69'
			360-361	S 63-37-12 E	177.81'
			361-362	S 23-19-42 E	90.49'
			362-363	S 80-49-36 W	1645.81'
			363-364	S 19-37-06 E	2206.93'
			364-365	S 65-36-54 E	2874.06'
			365-366	S 11-25-54 W	304.96'
			366-367	S 02-25-48 W	955.96'
			367-368	S 08-52-12 W	474.78'
			368-369	S 08-52-12 W	1536.13'
			369-370	N 74-04-12 W</	



# Flatwoods, WV

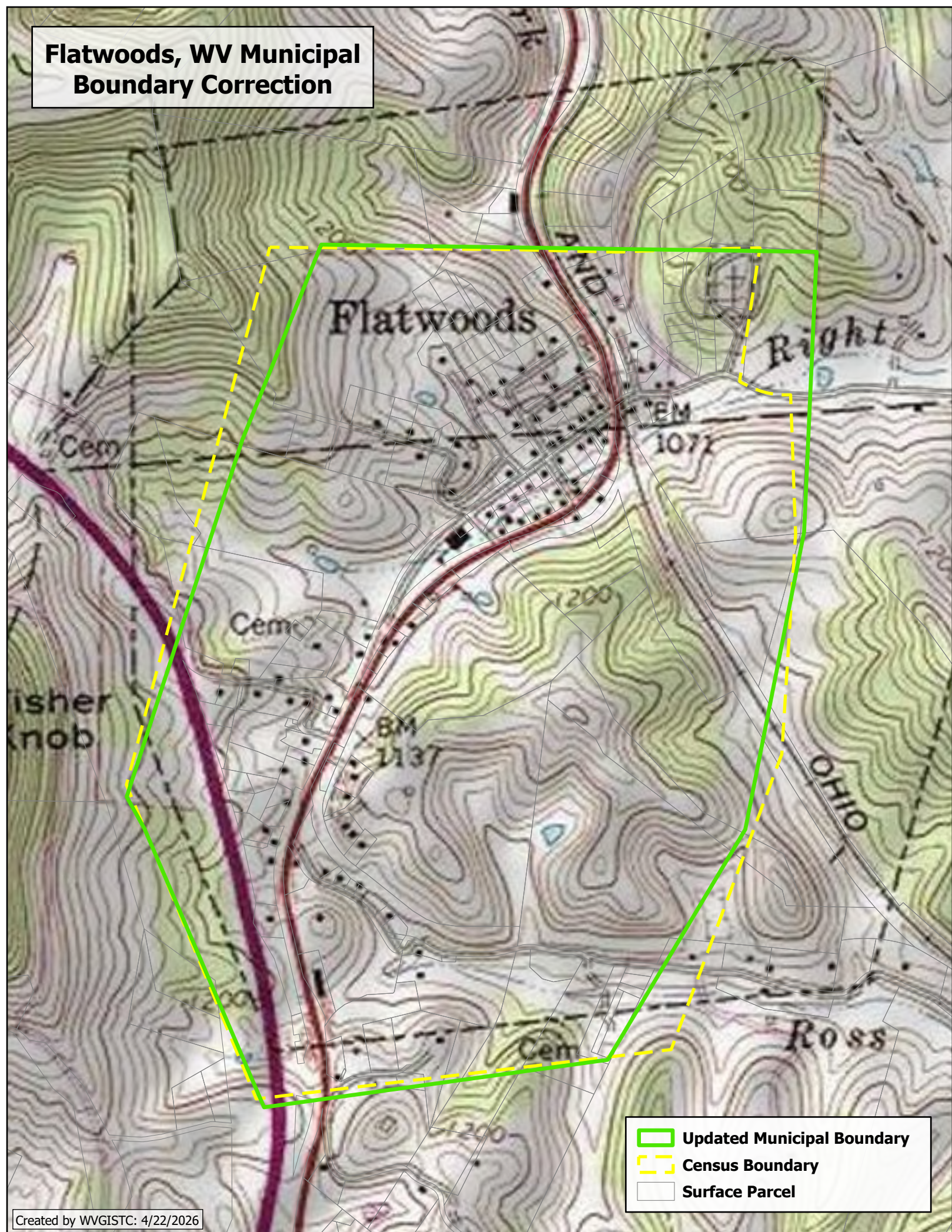
## 2026 Municipal Boundary

- Incorporated Place Boundary
- Braxton County Unincorporated
- Surface Parcel





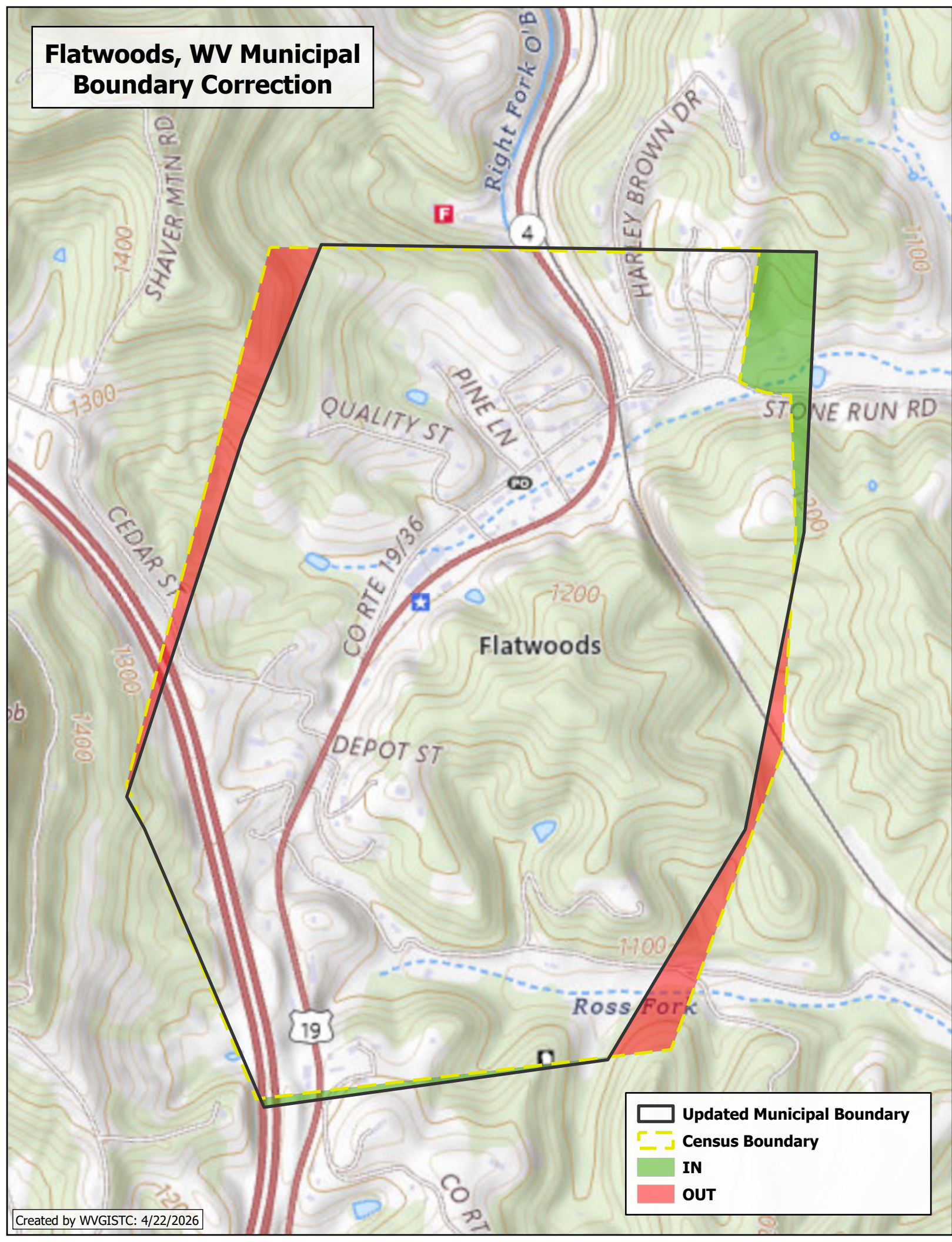
# Flatwoods, WV Municipal Boundary Correction



-  Updated Municipal Boundary
-  Census Boundary
-  Surface Parcel



# Flatwoods, WV Municipal Boundary Correction





Astronomic North is based on a field observation dated 10/04/1995 (93012-101-16).

BRAXTON COUNTY, WV  
FILED  
JUL 20, 2004 05:28:57

JOHN B. JORDAN  
COUNTY CLERK  
TRANSACTION NO: 2004004725

MAP BOOK  
SHEET 00010 Page: 00000

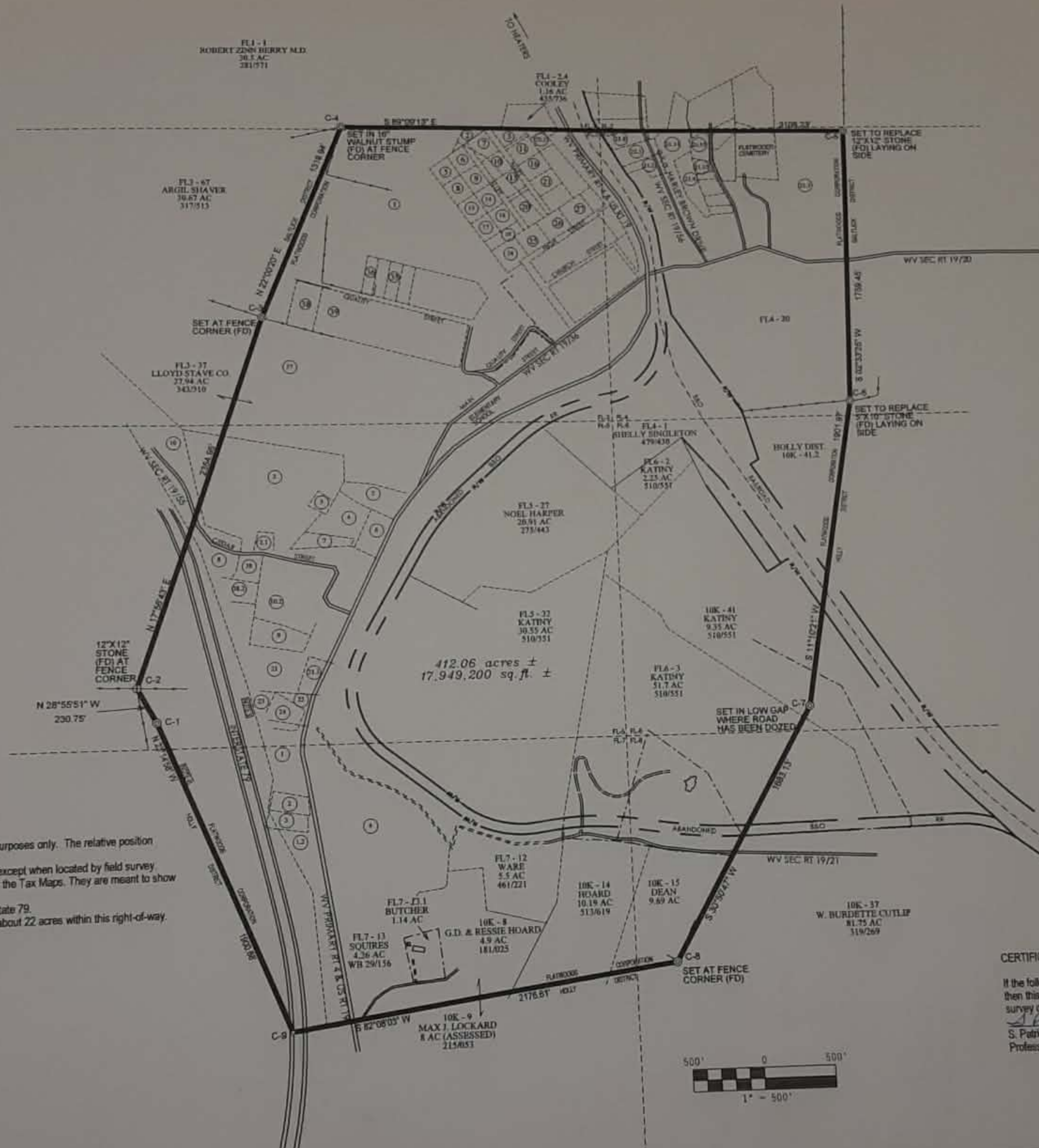


NOTES:

1. The precision of the bearings and distances shown on this plat are for calculation purposes only. The relative position of each monument is subject to a relative error of closure of the field survey.
2. Planimetric detail as shown is approximate only based on available mapping, etc., except when located by field survey.
3. The Tax Parcel lines shown on this map were reproduced from a scanned image of the Tax Maps. They are meant to show what property is within the corporation and should not be assumed to be accurate.
4. The area near Corners 1, 2 & 9 is within the controlled access right-of-way of Interstate 79.
5. Controlled access right-of-way lines were placed from scanned tax maps. There is about 22 acres within this right-of-way.

REFERENCE:

Using the same tract of land shown on a plat of survey made by J.A. Johnson, dated February 21, 1905, and accepted at a town council meeting dated May 4, 1905. The information is recorded in the Circuit Clerk's Office in a drawer labeled "Flat & May Tr. 1905 - Town of Flatwoods".



LEGEND	
	CORPORATION LINE
	LINE SURVEYED BY H.S.
	RAILROAD R/W
	TAX PARCEL LINE
	EXISTING RAILROAD TRACKS
	FENCE LINE
	ROAD IMPROVED
	APPROXIMATE TAX MAP LINES
	4\"/>

CERTIFICATION:

If the following signature and seal is not in blue ink, then this document should not be considered an original survey document.  
*S. Patrick Roberts* 7/17/04  
 S. Patrick Roberts  
 Professional Surveyor No. 2025



PLOT DATE: 17 JUL 2004		PLOT TIME: 16:57:03		CADD PLATFORM - VERSION: MicroStation SE		7.5' QUAD: SUTTON		SUBDIVISION:		PLAT of BOUNDARY SURVEY for the	
LATITUDE: 38°42'55"		SURVEY DATE: MAY 2004		DRAFTER: SPR		APPROVED BY: SPR		LONGITUDE: 80°39'42"		TOWN of FLATWOODS	
ORIG. W.D.: 15620		CADD FILE: FLATWOOD.CRD		MAP FILE:		WATERSHED: SALT LICK CREEK		COUNTY: BRAXTON		Retracement of the 314 acre 1905 st	
PROJECT NO: 04022-101-16		SCALE: 1" = 500'									



**Hornish Land Services, Inc.**

186 Main St. • Sutton, WV • 26601  
 Phone: (304) 765-7190 • Fax: (304) 765-7554

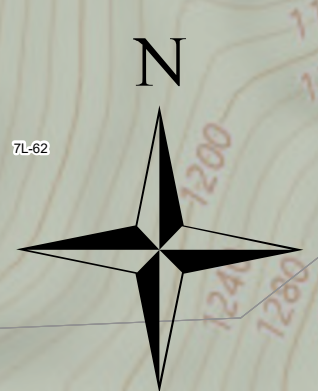
Design • Environmental • Forestry  
 Mapping • Land Surveying Consultants

NO.	W.D.	DATE	BY	REVISION



# Gassaway, WV

## 2026 Municipal Boundary



- Incorporated Place Boundary
- Braxton County Unincorporated
- Surface Parcel

0 0.15 0.3 Miles



# Sutton, WV

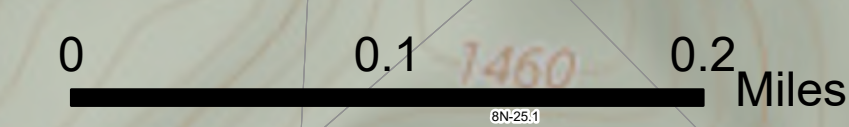
## 2026 Municipal Boundary



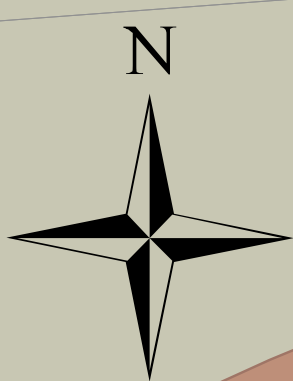
Incorporated Place Boundary

Braxton County Unincorporated

Surface Parcel







# Sutton, WV

## 2026 Municipal Boundary

Incorporated Place Boundary

Braxton County Unincorporated

Surface Parcel

0 0.1 0.2 Miles