

WASHINGTON BOULEVARD

Hildacrest

CAMELOT DRIVE

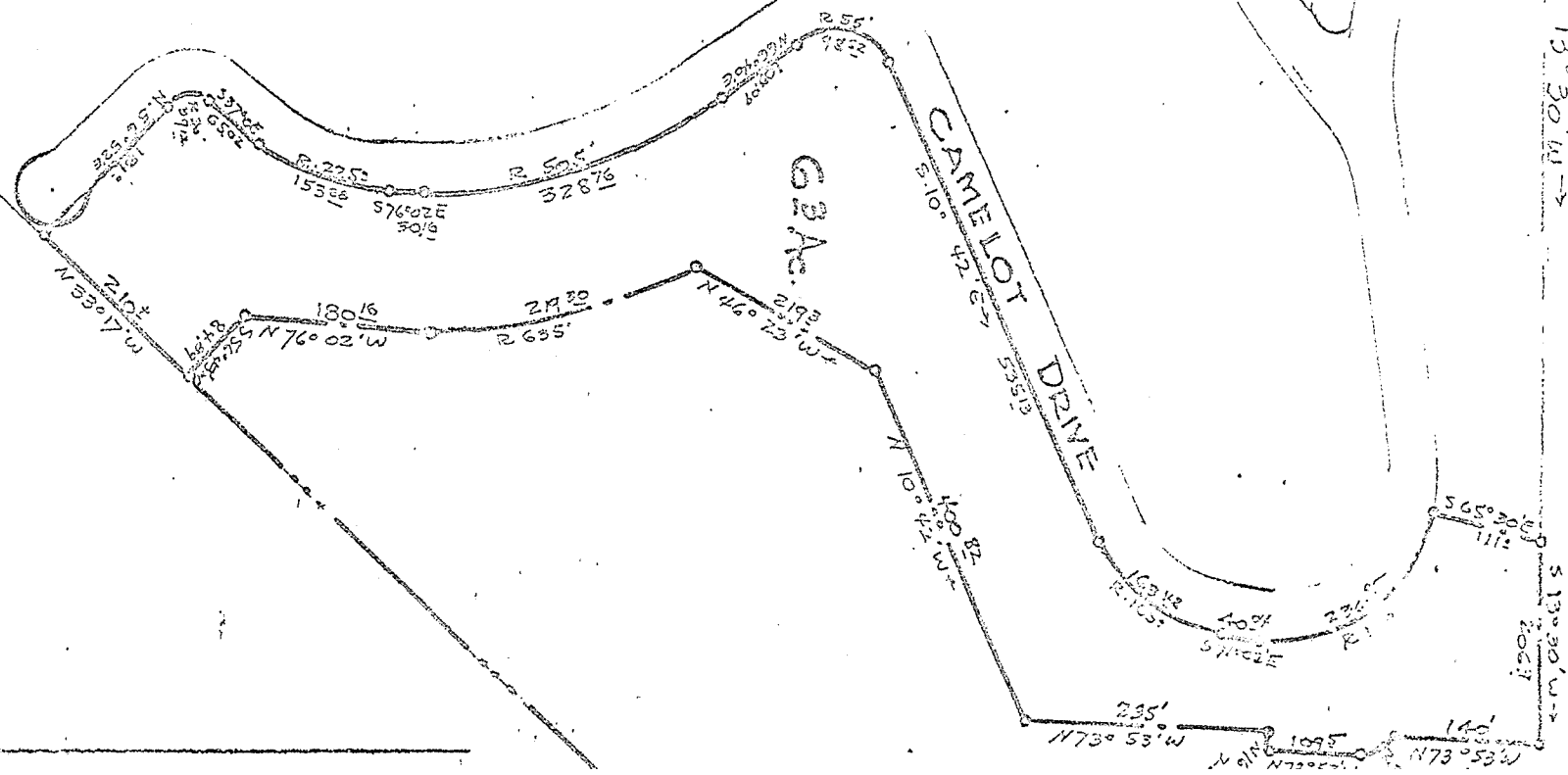
Harvey Taylorbois

S 13° 30' W →

Plat showing Territory
to be annexed by
The City of Huntington West Virginia

4 February 1974
Scale 1" = 200'

Harry W. Carper
Civil Engineer



6.3 A.

CAMELOT DRIVE

N 73° 53' W 145'
N 73° 53' W 109.5'
N 46° 23' W 235'

S 13° 30' W →