

ORDINANCE NO. 17-A-

AN ORDINANCE PROVIDING FOR ANNEXATION
OF 98.06 ACRES, MORE OR LESS,
BY THE CITY OF PLEASANT VALLEY

WHEREAS, a petition has been filed with the City of Pleasant Valley by a majority of the qualified voters and freeholders of the territory hereinafter described requesting that said area be annexed and made part of the City of Pleasant Valley; and

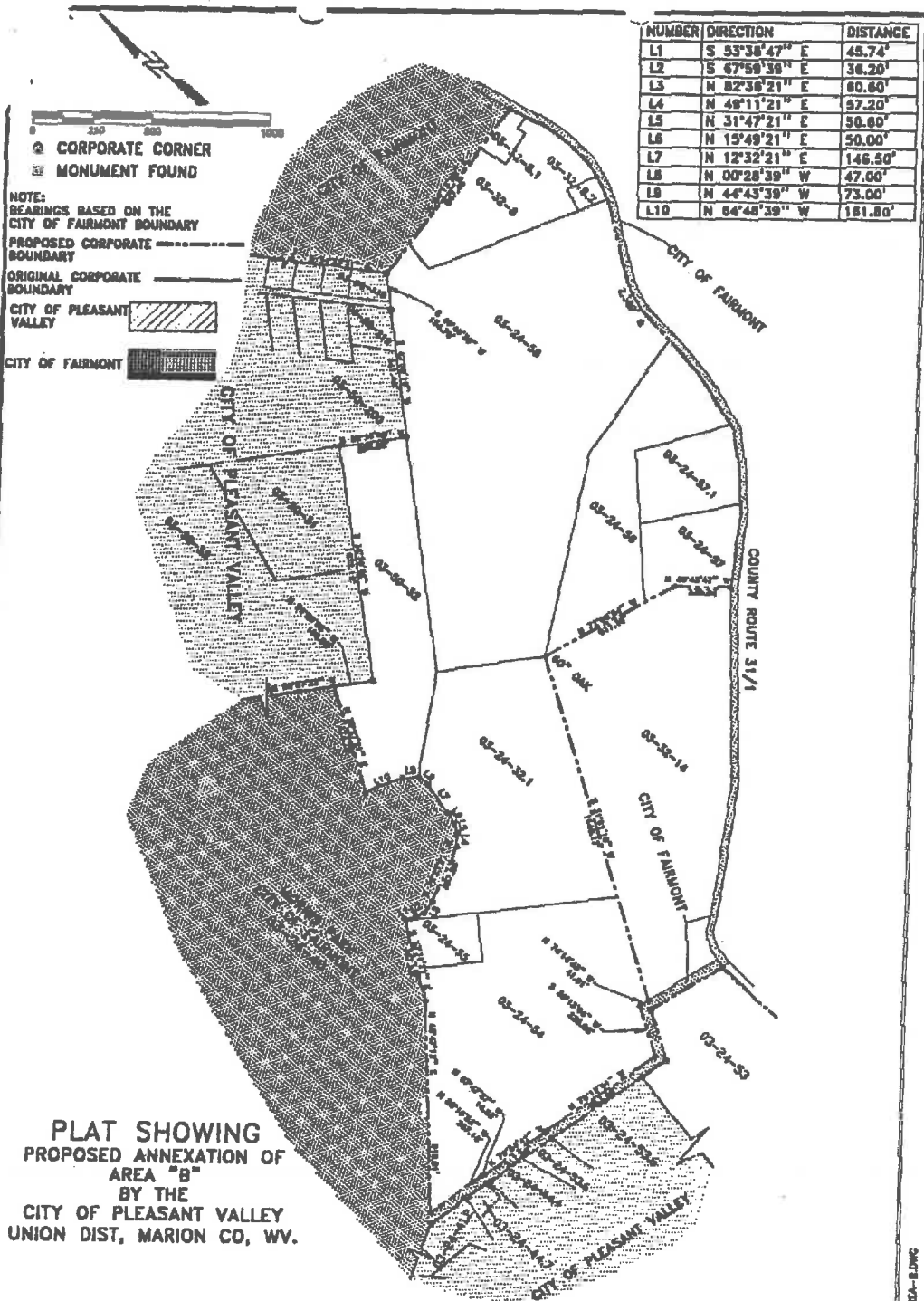
WHEREAS, it has been determined that the petition filed is sufficient in every respect, and that the requisite number of petitioners have signed the petition; and

WHEREAS, it appears that the filing of said petition is in accordance with the provisions of West Virginia Code 8-6-4;

BE IT ORDAINED BY THE CITY COUNCIL OF THE CITY OF PLEASANT VALLEY:

SECTION ONE: It is hereby declared and ordered that the following described real estate is hereby annexed into the City of Pleasant Valley, Marion County, West Virginia: Beginning at an original corporate corner of the City of Pleasant Valley, being a common corner to the City of Fairmont, and the eastern corner of Parcel 218 of Tax Map 03-50, and running thence with line of the City of Fairmont, N. 84° 13' 25" E. 847.46 feet to a point in the western line of County Route 31/1; thence continuing with said road and the City of Fairmont, 2,380 feet, more or less, to a point in the corner of Tax Map No. 03-24-57; thence N. 40° 43' 47" W. 235.94 feet; thence N. 72° 08' 54" W. 1,111.16 feet to a 60 inch oak; thence running with Parcels 32.1 and 54 of Tax Map 03-24, S. 31° 01' 18" W. 1,546.17 feet to a point in the City of Fairmont corporate boundary; thence with 20 lines of the City of Fairmont corporate boundary, N. 74° 14' 43" W. 41.91 feet to a point; thence S. 30° 13' 04" W. 225.08 feet to a point; thence N. 78° 18' 56" W. 553.09 feet to a point; thence N. 79° 34' 42" W. 312.80 feet to a point; thence N. 67° 47' 37" W. 14.83 feet to a point; thence N. 80° 16' 52" W. 267.16 feet to a point; thence N. 45° 47' 13" E. 918.01 feet to a point; thence N. 33° 31' 21" E. 367.93 feet to a point; thence S. 53° 36' 47" E. 45.74 feet to a point; thence S. 67° 59' 39" E. 36.20 feet to a point; thence N. 82° 36' 21" E. 60.60 feet to a point; thence N. 70° 21' 21" E. 257.00 feet to a point; thence N. 49° 11' 21" E. 57.20 feet to a point; thence N. 31° 47' 21" E. 50.60 feet to a point; thence N. 15° 49' 21" E. 50.00 feet to a point; thence N. 12° 32' 21" E. 146.50 feet to a point; thence N. 00° 28' 39" W. 47.00 feet to a point; thence N. 44° 43' 39" W. 73.00 feet to a point; thence N. 64° 48' 39" W. 161.80 feet to a point; thence N. 30° 27' 21" E. 474.70 feet to a point in the original Pleasant Valley corporate boundary, lying in the southern line of Parcel 03-50-33, containing 98.06 acres, more or less. A map or plat of the territory hereby annexed is attached to and made a part of this ordinance.

Web Copy



NUMBER	DIRECTION	DISTANCE
L1	S 33°38'47" E	45.74'
L2	S 67°59'38" E	36.20'
L3	N 82°36'21" E	80.60'
L4	N 48°11'21" E	57.20'
L5	N 31°47'21" E	50.80'
L6	N 15°49'21" E	50.00'
L7	N 12°32'21" E	146.50'
L8	N 00°28'39" W	47.00'
L9	N 44°43'39" W	73.00'
L10	N 64°48'39" W	181.80'

PLAT SHOWING
PROPOSED ANNEXATION OF
AREA "B"
BY THE
CITY OF PLEASANT VALLEY
UNION DIST, MARION CO, WV.

Gary K. Clayton
GARY K. CLAYTON, PS #1072

AREA "B" = 98.06 ACRES±

FREELANCE TECHNICAL ASSOCIATES		Drawn By: JWR	DATE: 2-8-01
207 FAIRMONT AVE. FAIRMONT, WV 26334		Engineer: GKC	Scale: 1" = 500'
PHONE: (304) 366-6288 FAX: (304) 366-6285		Ch'd. By: GKC	Map No: AREA-B
USE OF THIS MAP IS RESTRICTED TO THE PROJECT FOR WHICH IT WAS PREPARED. IT SHALL NOT BE REPRODUCED FOR TRANSFER TO OTHER DOCUMENTS USED OR UNLESS IN WRITING BY FREELANCE TECHNICAL ASSOCIATES (304) 366-6288		Job No: 20143-C2	

C:\DWG\WORK\AREA-B.DWG