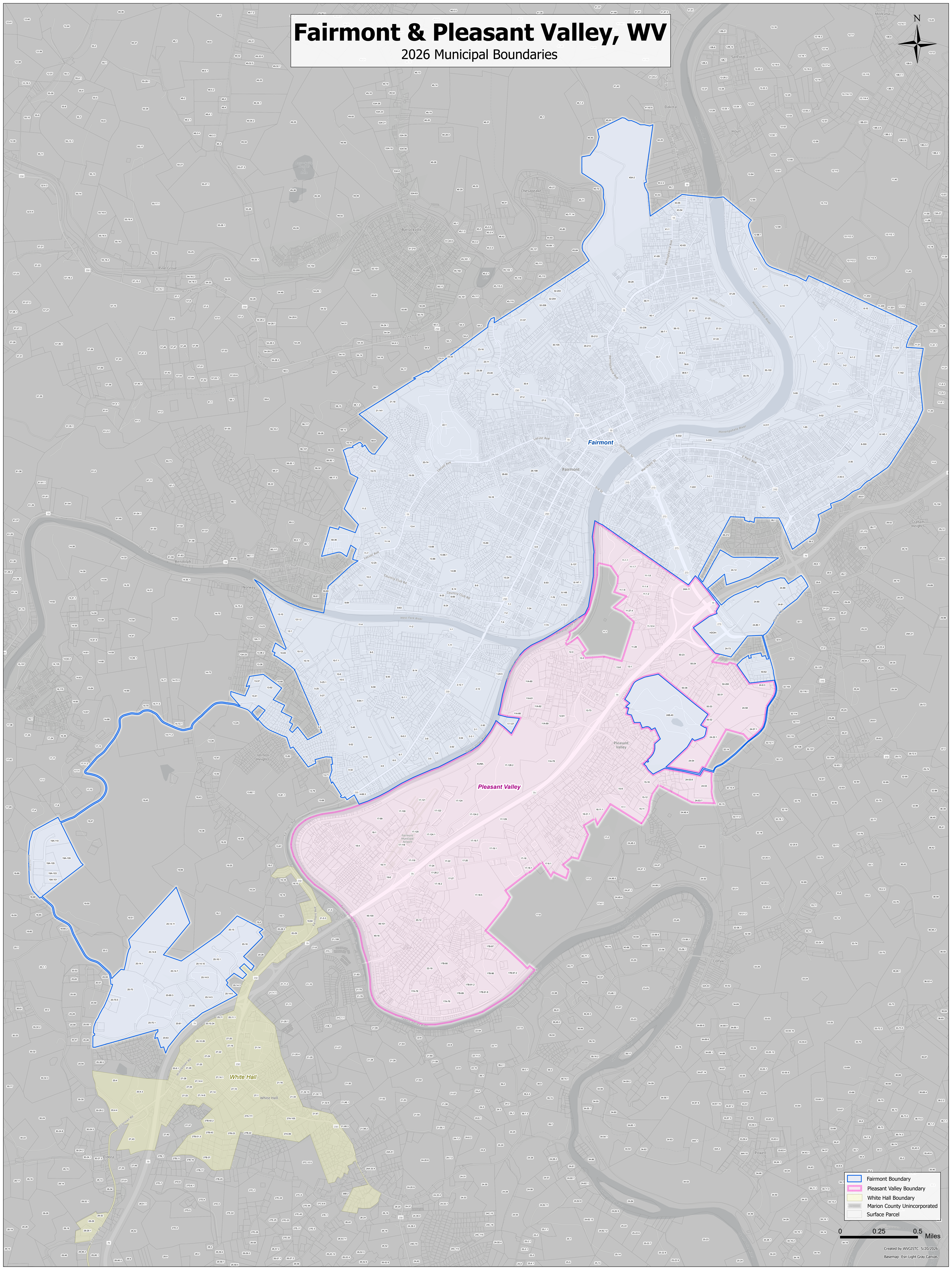
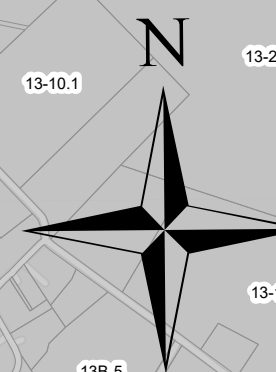


# Fairmont & Pleasant Valley, WV

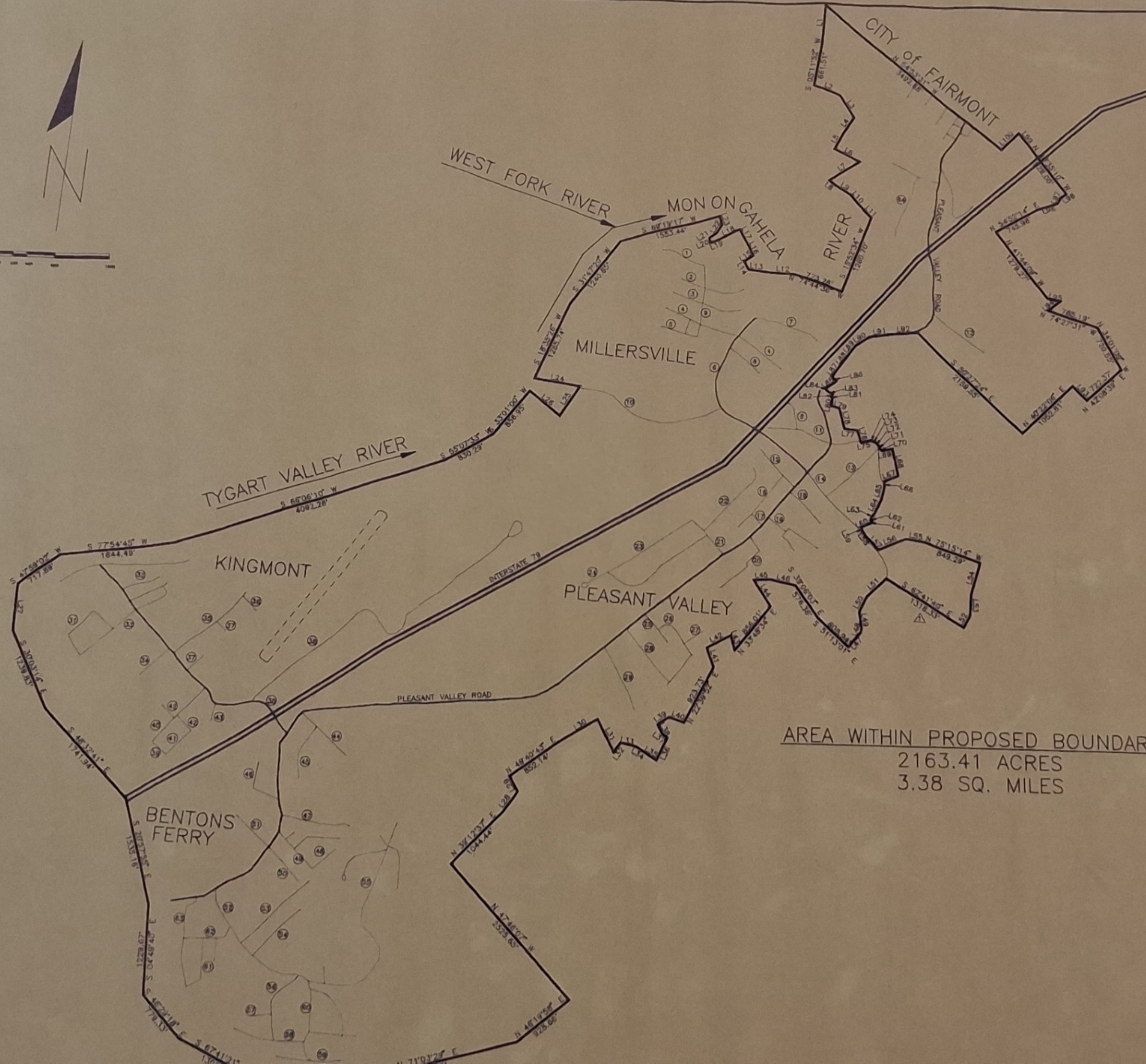
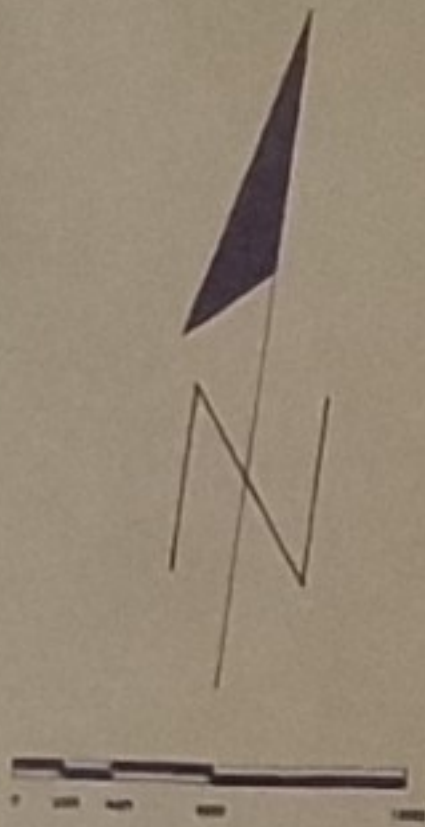
## 2026 Municipal Boundaries



- Fairmont Boundary
- Pleasant Valley Boundary
- White Hall Boundary
- Marion County Unincorporated
- Surface Parcel

0 0.25 0.5 Miles



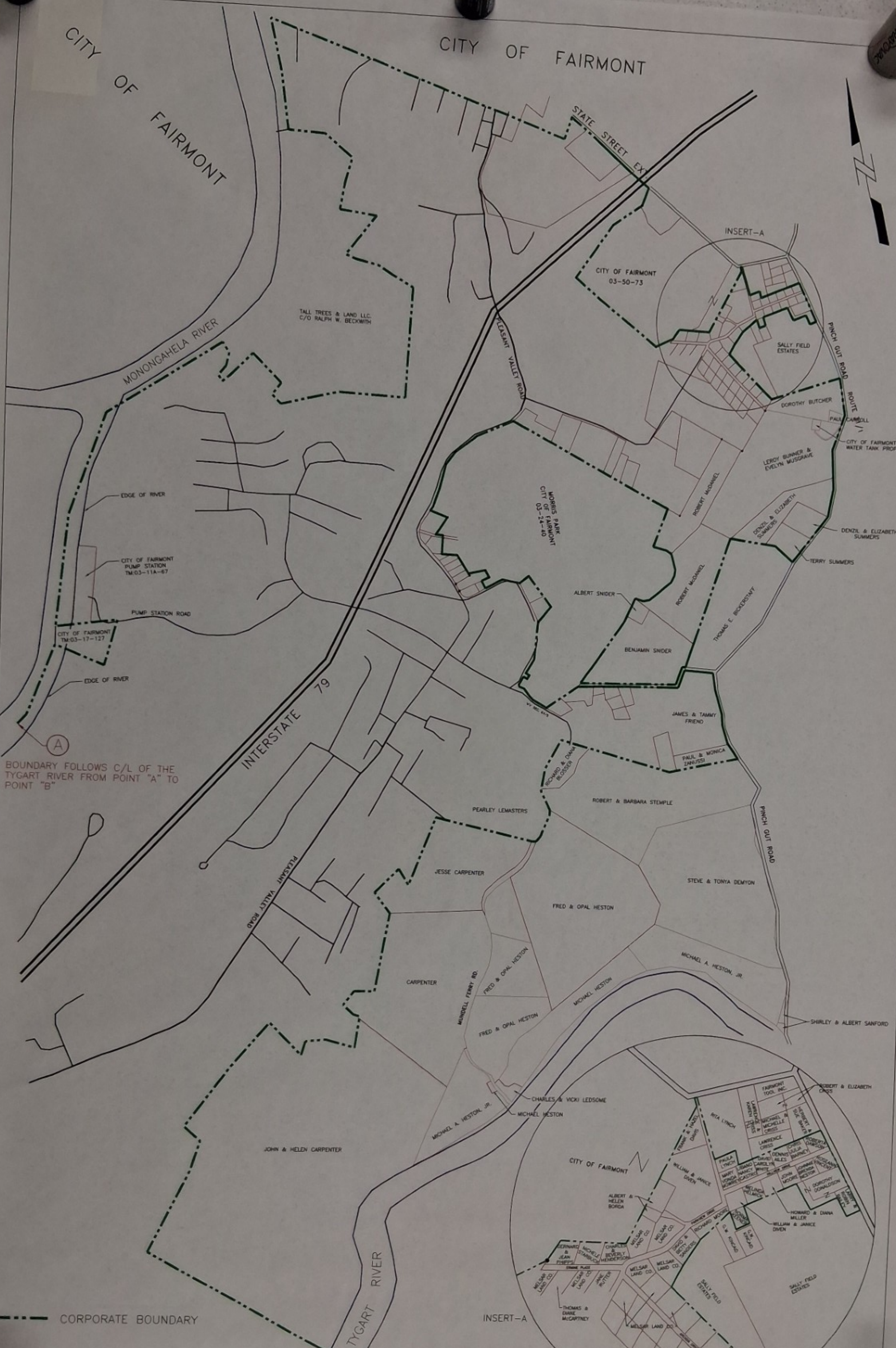


AREA WITHIN PROPOSED BOUNDARIES  
2163.41 ACRES  
3.38 SQ. MILES



CITY OF FAIRMONT

CITY OF FAIRMONT



BOUNDARY FOLLOWS C/L OF THE TYGART RIVER FROM POINT "A" TO POINT "B"

BOUNDARY FOLLOWS C/L OF THE TYGART RIVER FROM POINT "B" TO POINT "A"

CORPORATE BOUNDARY

CITY OF PLEASANT VALLEY  
CORPORATE BOUNDARY LINE

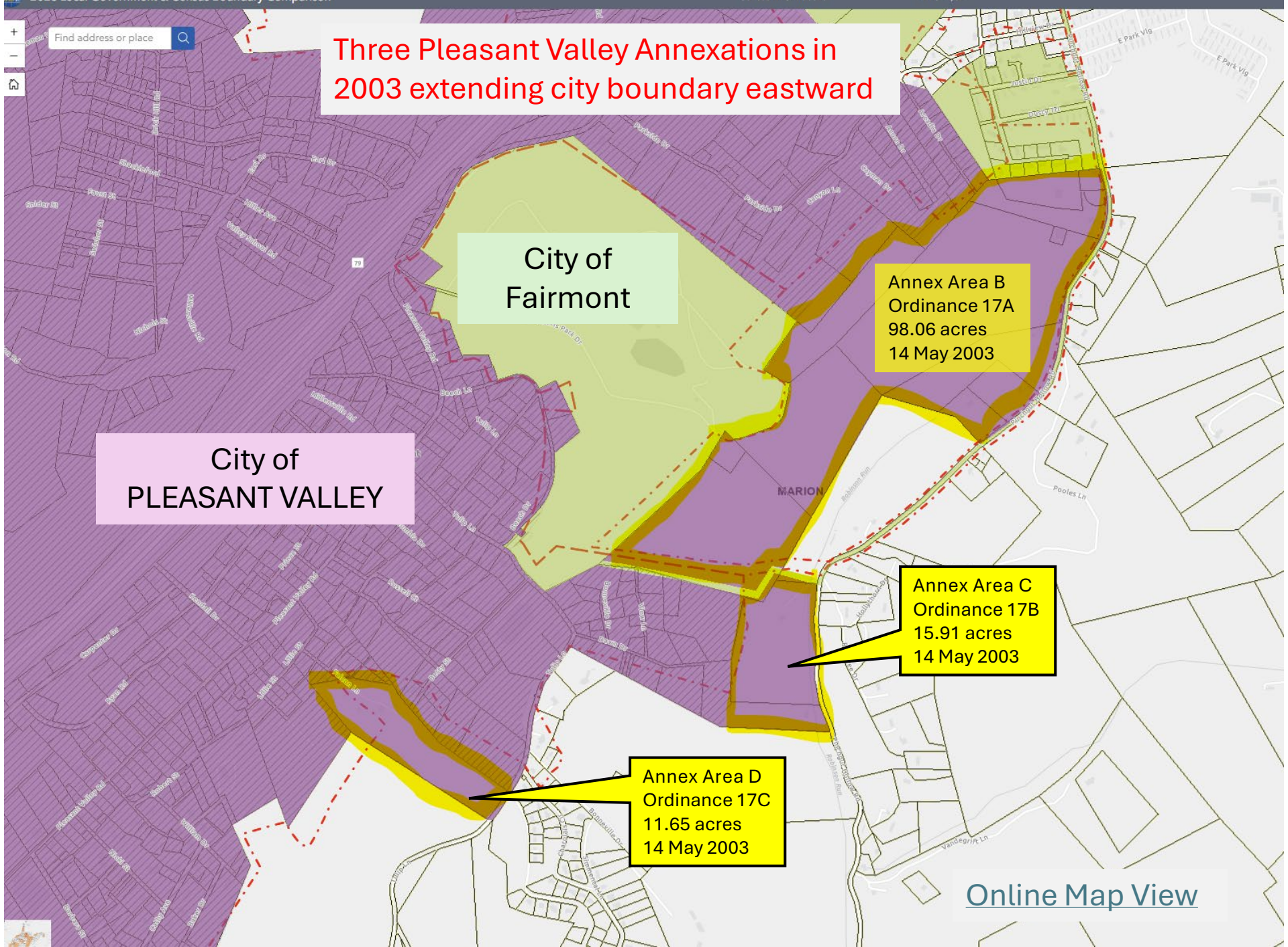
FREELANCE TECHNICAL ASSOCIATES

307 FAIRMONT AVENUE  
FAIRMONT, WV 26534

PHONE: (304) 336-6200 FAX: (304) 336-6201

Scale	1" = 400' 00"
Drawn by	HTS
Check by	CCP
Plot No.	33056-C1
Sheet No.	CAN
Date	DEC





ORDINANCE NO. 17-A-

AN ORDINANCE PROVIDING FOR ANNEXATION  
OF 98.06 ACRES, MORE OR LESS,  
BY THE CITY OF PLEASANT VALLEY

WHEREAS, a petition has been filed with the City of Pleasant Valley by a majority of the qualified voters and freeholders of the territory hereinafter described requesting that said area be annexed and made part of the City of Pleasant Valley; and

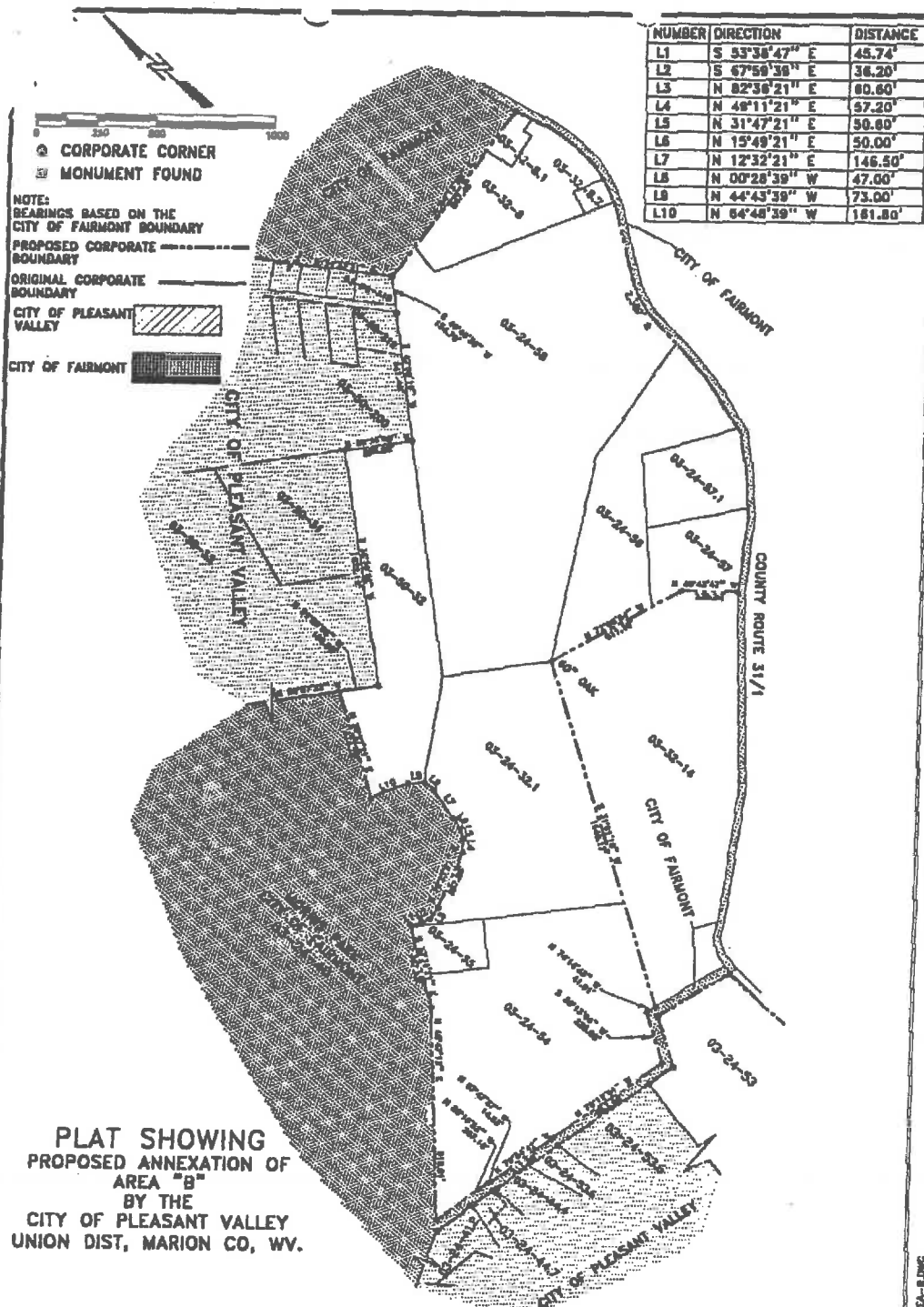
WHEREAS, it has been determined that the petition filed is sufficient in every respect, and that the requisite number of petitioners have signed the petition; and

WHEREAS, it appears that the filing of said petition is in accordance with the provisions of West Virginia Code 8-6-4;

BE IT ORDAINED BY THE CITY COUNCIL OF THE CITY OF PLEASANT VALLEY:

SECTION ONE: It is hereby declared and ordered that the following described real estate is hereby annexed into the City of Pleasant Valley, Marion County, West Virginia: Beginning at an original corporate corner of the City of Pleasant Valley, being a common corner to the City of Fairmont, and the eastern corner of Parcel 218 of Tax Map 03-50, and running thence with line of the City of Fairmont, N. 84° 13' 25" E. 847.46 feet to a point in the western line of County Route 31/1; thence continuing with said road and the City of Fairmont, 2,380 feet, more or less, to a point in the corner of Tax Map No. 03-24-57; thence N. 40° 43' 47" W. 235.94 feet; thence N. 72° 08' 54" W. 1,111.16 feet to a 60 inch oak; thence running with Parcels 32.1 and 54 of Tax Map 03-24, S. 31° 01' 18" W. 1,546.17 feet to a point in the City of Fairmont corporate boundary; thence with 20 lines of the City of Fairmont corporate boundary, N. 74° 14' 43" W. 41.91 feet to a point; thence S. 30° 13' 04" W. 225.08 feet to a point; thence N. 78° 18' 56" W. 553.09 feet to a point; thence N. 79° 34' 42" W. 312.80 feet to a point; thence N. 67° 47' 37" W. 14.83 feet to a point; thence N. 80° 16' 52" W. 267.16 feet to a point; thence N. 45° 47' 13" E. 918.01 feet to a point; thence N. 33° 31' 21" E. 367.93 feet to a point; thence S. 53° 36' 47" E. 45.74 feet to a point; thence S. 67° 59' 39" E. 36.20 feet to a point; thence N. 82° 36' 21" E. 60.60 feet to a point; thence N. 70° 21' 21" E. 257.00 feet to a point; thence N. 49° 11' 21" E. 57.20 feet to a point; thence N. 31° 47' 21" E. 50.60 feet to a point; thence N. 15° 49' 21" E. 50.00 feet to a point; thence N. 12° 32' 21" E. 146.50 feet to a point; thence N. 00° 28' 39" W. 47.00 feet to a point; thence N. 44° 43' 39" W. 73.00 feet to a point; thence N. 64° 48' 39" W. 161.80 feet to a point; thence N. 30° 27' 21" E. 474.70 feet to a point in the original Pleasant Valley corporate boundary, lying in the southern line of Parcel 03-50-33, containing 98.06 acres, more or less. A map or plat of the territory hereby annexed is attached to and made a part of this ordinance.

Web Copy



PLAT SHOWING  
PROPOSED ANNEXATION OF  
AREA "B"  
BY THE  
CITY OF PLEASANT VALLEY  
UNION DIST, MARION CO, WV.

*Gary K. Clayton*  
GARY K. CLAYTON, PS #1072

AREA "B" = 98.06 ACRES±

**FREELANCE TECHNICAL ASSOCIATES**

207 FAIRMONT AVE.  
FAIRMONT, WV 26334  
PHONE: (304) 366-6288 FAX: (304) 366-6285

Drawn By:	JWR	Scale:	2-0-01
Engineer:	GKC	Sheet:	1" = 500'
Ch'd. By:	GKC	Map No.:	AREA-B
		Job No.:	20143-C2

THIS DOCUMENT AND ITS CONTENTS ARE THE PROPERTY OF FREELANCE TECHNICAL ASSOCIATES AND SHALL NOT BE REPRODUCED FOR TRANSFER TO OTHER DOCUMENTS USED OR DISCLOSED TO OTHERS FOR ANY PURPOSE WITHOUT THE SPECIFIC AUTHORIZATION IN WRITING BY FREELANCE TECHNICAL ASSOCIATES (304) 366-6288

C:\DWG\WORK\AREA-B.DWG

ORDINANCE NO. 17-8-

AN ORDINANCE PROVIDING FOR ANNEXATION  
OF 15.91 ACRES, MORE OR LESS,  
BY THE CITY OF PLEASANT VALLEY

WHEREAS, a petition has been filed with the City of Pleasant Valley by a majority of the qualified voters and freeholders of the territory hereinafter described requesting that said area be annexed and made part of the City of Pleasant Valley; and

WHEREAS, it has been determined that the petition filed is sufficient in every respect, and that the requisite number of petitioners have signed the petition; and

WHEREAS, it appears that the filing of said petition is in accordance with the provisions of West Virginia Code 8-6-4;

BE IT ORDAINED BY THE CITY COUNCIL OF THE CITY OF PLEASANT VALLEY:

**SECTION ONE:** It is hereby declared and ordered that the following described real estate is hereby annexed into the City of Pleasant Valley, Marion County, West Virginia: Beginning at a point in the northeastern corner of Parcel 53.6 of Tax Map 03-24, an original corner of the boundary of the City of Pleasant Valley, also in line with the boundary of the City of Fairmont, and running thence with three lines of the City of Fairmont, S. 78° 18' 56" E. 127.00 feet; N. 30° 13' 04" E. 222.87 feet; S. 74° 14' 43" E. 344.15 feet to a point in the western line of County Route 31/1; thence with the western line of County Route 31/1, two lines, S. 1° 00' 24" W. 673.09 feet to a point; S. 17° 09' 41" E. 407.75 feet to a 24 inch oak; thence leaving County Route 31/1 and running S. 89° 27' 31" W. 827.45 feet to a point in line of the City of Pleasant Valley; thence with three lines of the current boundary of Pleasant Valley, S. 22° 33' 07" W. 195.14 feet; S. 01° 51' 36" E. 327.21 feet; and S. 10° 04' 04" W. 497.38 feet to the place of beginning, containing 15.91 acres, more or less. A map or plat of the territory hereby annexed is attached to and made a part of this ordinance.

**SECTION TWO:** The City Clerk shall enter the adoption of this ordinance upon the proper records of the City and shall forward a certificate to that effect to the County Commission of Marion County for entry of an order of annexation in accordance with West Virginia Code 8-6-4.

Passed by the City Council this 14<sup>th</sup> day of May, 2003.

  
MAYOR

ATTEST:

  
CITY CLERK



TO THE MARION COUNTY COMMISSION:

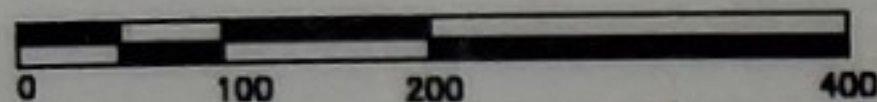
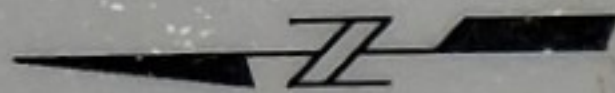
I, City Clerk of the City of Pleasant Valley, hereby certify that upon petition filed with the City of Pleasant Valley in accordance with West Virginia Code 8-6-4, which has been found to be sufficient in every respect, the attached ordinance of the City of Pleasant Valley has been adopted, annexing the territory described therein into the City of Pleasant Valley. This certificate is forwarded to the Marion County Commission for entry of an order which is required by West Virginia Code 8-6-4.

Dated this 14<sup>th</sup> day of May, 2003.

Mary E. Kramer  
CITY CLERK



⊗ CORPORATE CORNER  
 ■ MONUMENT FOUND

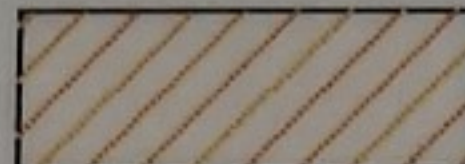


NOTE:  
 BEARINGS BASED ON THE  
 CITY OF FAIRMONT BOUNDARY

PROPOSED CORPORATE BOUNDARY ————

ORIGINAL CORPORATE BOUNDARY ————

CITY OF PLEASANT VALLEY



CITY OF FAIRMONT



AREA "C" = 15.91 ACRES±



PLAT SHOWING  
 PROPOSED ANNEXATION OF  
 AREA "C"  
 BY THE  
 CITY OF PLEASANT VALLEY  
 UNION DIST, MARION CO, WV.  
 TAX MAP: 03-24-○

GARY K. CLAYTON, PS #1072

**FREELANCE TECHNICAL ASSOCIATES**

207 FAIRMONT AVE.  
 FAIRMONT, WV 26554  
 PHONE: (304) 366-6288 FAX: (304) 366-6295

Drawn By:	JWR	DATE:	1-25-01
Engineer:	GKC	Scale:	1" = 200'
Ck'd. By:	GKC	Div. No.	AREA 'C'
		Job No.	20142-C2

THIS DOCUMENT NOR THE INFORMATION DISCLOSED HEREIN SHALL NOT BE REPRODUCED FOR TRANSFER TO OTHER DOCUMENTS USED OR DISCLOSED TO OTHERS FOR ANY PURPOSE EXCEPT AS SPECIFICALLY AUTHORIZED IN WRITING BY FREELANCE TECHNICAL ASSOCIATES (304) 366-6288.

CAD FILE: L:\DWG\9094\AREA-C.DWG

CAD FILE: L:\DWG\9094\AREA-B.DWG



ORDINANCE NO. 17-c

AN ORDINANCE PROVIDING FOR ANNEXATION  
OF 11.65 ACRES, MORE OR LESS,  
BY THE CITY OF PLEASANT VALLEY

WHEREAS, a petition has been filed with the City of Pleasant Valley by a majority of the qualified voters and freeholders of the territory hereinafter described requesting that said area be annexed and made part of the City of Pleasant Valley; and

WHEREAS, it has been determined that the petition filed is sufficient in every respect, and that the requisite number of petitioners have signed the petition; and

WHEREAS, it appears that the filing of said petition is in accordance with the provisions of West Virginia Code 8-6-4;

BE IT ORDAINED BY THE CITY COUNCIL OF THE CITY OF PLEASANT VALLEY:

SECTION ONE: It is hereby declared and ordered that the following described real estate is hereby annexed into the City of Pleasant Valley, Marion County, West Virginia: Beginning at an 18 inch snag in the division line of Tax Map 03-15, Parcels 10.4 and 11, and running with the existing line of the City of Pleasant Valley (Tax Map 03-15-11), N. 57° 07' 46" W. 554.50 feet; thence with territory shown on Tax Map 03-24-47, S. 27° 45' 39" W. 303.69 feet; thence S. 55° 31' 09" E. 1,192.36 feet to an 18 inch locust, corner to existing boundary of the City of Pleasant Valley; thence with four lines of the existing boundary of the City of Pleasant Valley, S. 54° 37' 23" E. 199.96 feet to a 12 inch locust; S. 37° 19' 56" E. 188.78 feet to a one-half inch pipe; N. 72° 59' 22" E. 555.89 feet; and N. 37° 09' 20" W. 669.81 feet to the place of beginning, containing 11.65 acres, more or less. A map or plat of the territory hereby annexed is attached to and made a part of this ordinance.

SECTION TWO: The City Clerk shall enter the adoption of this ordinance upon the proper records of the City and shall forward a certificate to that effect to the County Commission of Marion County for entry of an order of annexation in accordance with West Virginia Code 8-6-4.

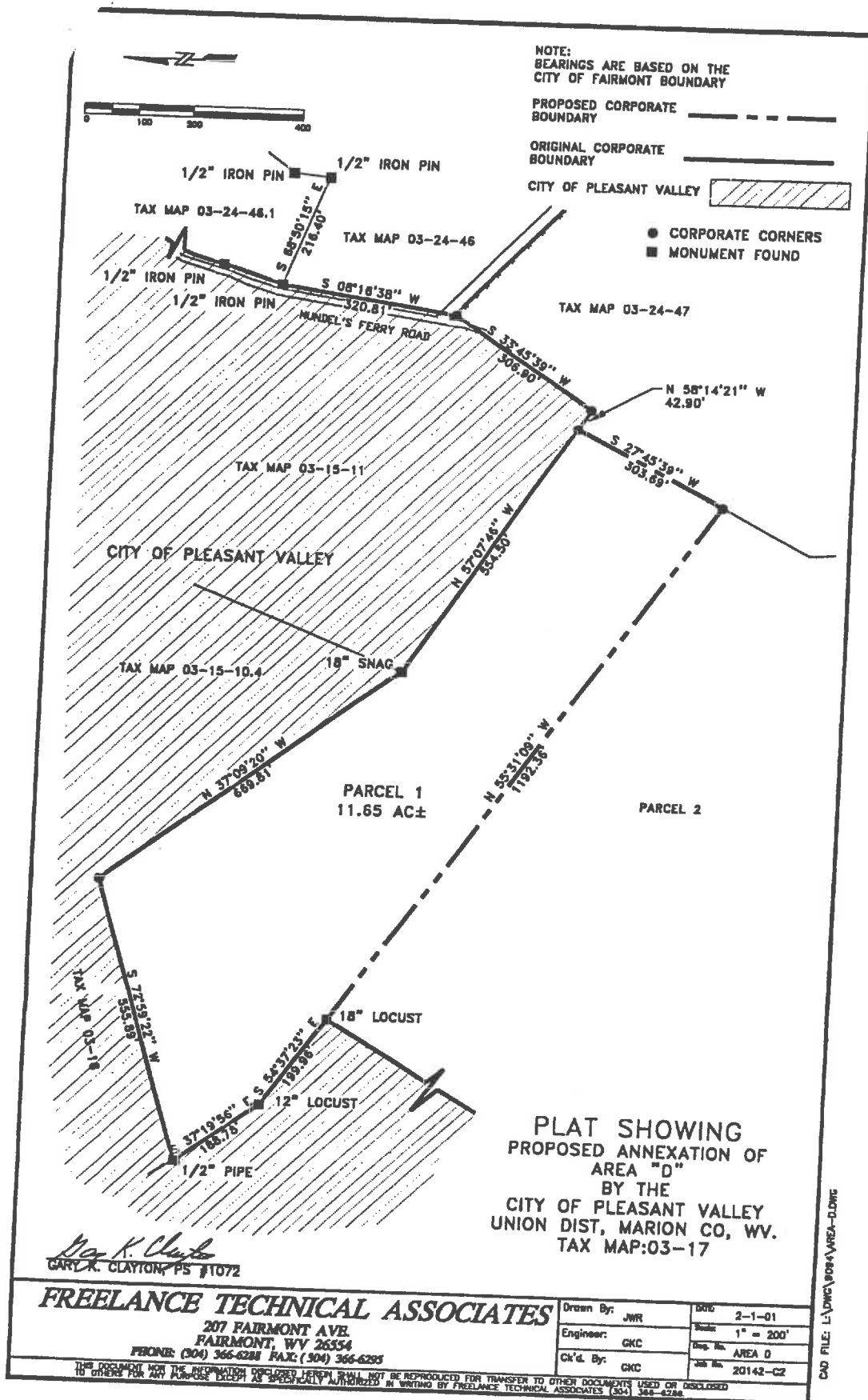
Passed by the City Council this 14<sup>th</sup> day of May, 2003.

  
MAYOR

ATTEST:

  
CITY CLERK







TO THE MARION COUNTY COMMISSION:

I, City Clerk of the City of Pleasant Valley, hereby certify that upon petition filed with the City of Pleasant Valley in accordance with West Virginia Code 8-6-4, which has been found to be sufficient in every respect, the attached ordinance of the City of Pleasant Valley has been adopted, annexing the territory described therein into the City of Pleasant Valley. This certificate is forwarded to the Marion County Commission for entry of an order which is required by West Virginia Code 8-6-4.

Dated this 14<sup>th</sup> day of May, 2003.

Mary E. Kramer  
CITY CLERK



# CITY OF FAIRMONT



--- PROPOSED BOUNDARY ADJUSTMENT  
 --- CORPORATE BOUNDARY

BOUNDARY FOLLOWS C/L OF THE TYGART RIVER FROM POINT "A" TO POINT "B"

CITY OF PLEASANT VALLEY CONTACT MAP	CITY OF PLEASANT VALLEY MARCH 20, 2024	Drawn By: JRM	Scale: 1" = 100'
<b>FREELANCE TECHNICAL ASSOCIATES</b> 307 FAIRMONT AVE FAIRMONT, WV 26036 PHONE: (304) 241-0000 FAX: (304) 241-0001		Date: 03-20-24 Title: MAP Author: JRM Checker: JRM	Date: 03-20-24 Title: MAP Author: JRM Checker: JRM

17	LAUREN	5-7pm	MSJC	20	MSJC	21	MSJC	22	LAUREN	23	LAUREN
18	THOMAS	5-7pm	MSJC	19	THOMAS	20	THOMAS	21	THOMAS	22	THOMAS
20	THOMAS	5-7pm	MSJC	21	THOMAS	22	THOMAS	23	THOMAS	24	THOMAS
21	THOMAS	5-7pm	MSJC	22	THOMAS	23	THOMAS	24	THOMAS	25	THOMAS
22	THOMAS	5-7pm	MSJC	23	THOMAS	24	THOMAS	25	THOMAS	26	THOMAS
23	THOMAS	5-7pm	MSJC	24	THOMAS	25	THOMAS	26	THOMAS	27	THOMAS
24	THOMAS	5-7pm	MSJC	25	THOMAS	26	THOMAS	27	THOMAS	28	THOMAS
25	THOMAS	5-7pm	MSJC	26	THOMAS	27	THOMAS	28	THOMAS	29	THOMAS
26	THOMAS	5-7pm	MSJC	27	THOMAS	28	THOMAS	29	THOMAS	30	THOMAS
27	THOMAS	5-7pm	MSJC	28	THOMAS	29	THOMAS	30	THOMAS	31	THOMAS
28	THOMAS	5-7pm	MSJC	29	THOMAS	30	THOMAS	31	THOMAS	32	THOMAS
29	THOMAS	5-7pm	MSJC	30	THOMAS	31	THOMAS	32	THOMAS	33	THOMAS
30	THOMAS	5-7pm	MSJC	31	THOMAS	32	THOMAS	33	THOMAS	34	THOMAS
31	THOMAS	5-7pm	MSJC	32	THOMAS	33	THOMAS	34	THOMAS	35	THOMAS
32	THOMAS	5-7pm	MSJC	33	THOMAS	34	THOMAS	35	THOMAS	36	THOMAS
33	THOMAS	5-7pm	MSJC	34	THOMAS	35	THOMAS	36	THOMAS	37	THOMAS
34	THOMAS	5-7pm	MSJC	35	THOMAS	36	THOMAS	37	THOMAS	38	THOMAS
35	THOMAS	5-7pm	MSJC	36	THOMAS	37	THOMAS	38	THOMAS	39	THOMAS
36	THOMAS	5-7pm	MSJC	37	THOMAS	38	THOMAS	39	THOMAS	40	THOMAS
37	THOMAS	5-7pm	MSJC	38	THOMAS	39	THOMAS	40	THOMAS	41	THOMAS
38	THOMAS	5-7pm	MSJC	39	THOMAS	40	THOMAS	41	THOMAS	42	THOMAS
39	THOMAS	5-7pm	MSJC	40	THOMAS	41	THOMAS	42	THOMAS	43	THOMAS
40	THOMAS	5-7pm	MSJC	41	THOMAS	42	THOMAS	43	THOMAS	44	THOMAS
41	THOMAS	5-7pm	MSJC	42	THOMAS	43	THOMAS	44	THOMAS	45	THOMAS
42	THOMAS	5-7pm	MSJC	43	THOMAS	44	THOMAS	45	THOMAS	46	THOMAS
43	THOMAS	5-7pm	MSJC	44	THOMAS	45	THOMAS	46	THOMAS	47	THOMAS
44	THOMAS	5-7pm	MSJC	45	THOMAS	46	THOMAS	47	THOMAS	48	THOMAS
45	THOMAS	5-7pm	MSJC	46	THOMAS	47	THOMAS	48	THOMAS	49	THOMAS
46	THOMAS	5-7pm	MSJC	47	THOMAS	48	THOMAS	49	THOMAS	50	THOMAS
47	THOMAS	5-7pm	MSJC	48	THOMAS	49	THOMAS	50	THOMAS	51	THOMAS
48	THOMAS	5-7pm	MSJC	49	THOMAS	50	THOMAS	51	THOMAS	52	THOMAS
49	THOMAS	5-7pm	MSJC	50	THOMAS	51	THOMAS	52	THOMAS	53	THOMAS
50	THOMAS	5-7pm	MSJC	51	THOMAS	52	THOMAS	53	THOMAS	54	THOMAS
51	THOMAS	5-7pm	MSJC	52	THOMAS	53	THOMAS	54	THOMAS	55	THOMAS
52	THOMAS	5-7pm	MSJC	53	THOMAS	54	THOMAS	55	THOMAS	56	THOMAS
53	THOMAS	5-7pm	MSJC	54	THOMAS	55	THOMAS	56	THOMAS	57	THOMAS
54	THOMAS	5-7pm	MSJC	55	THOMAS	56	THOMAS	57	THOMAS	58	THOMAS
55	THOMAS	5-7pm	MSJC	56	THOMAS	57	THOMAS	58	THOMAS	59	THOMAS
56	THOMAS	5-7pm	MSJC	57	THOMAS	58	THOMAS	59	THOMAS	60	THOMAS
57	THOMAS	5-7pm	MSJC	58	THOMAS	59	THOMAS	60	THOMAS	61	THOMAS
58	THOMAS	5-7pm	MSJC	59	THOMAS	60	THOMAS	61	THOMAS	62	THOMAS
59	THOMAS	5-7pm	MSJC	60	THOMAS	61	THOMAS	62	THOMAS	63	THOMAS
60	THOMAS	5-7pm	MSJC	61	THOMAS	62	THOMAS	63	THOMAS	64	THOMAS
61	THOMAS	5-7pm	MSJC	62	THOMAS	63	THOMAS	64	THOMAS	65	THOMAS
62	THOMAS	5-7pm	MSJC	63	THOMAS	64	THOMAS	65	THOMAS	66	THOMAS
63	THOMAS	5-7pm	MSJC	64	THOMAS	65	THOMAS	66	THOMAS	67	THOMAS
64	THOMAS	5-7pm	MSJC	65	THOMAS	66	THOMAS	67	THOMAS	68	THOMAS
65	THOMAS	5-7pm	MSJC	66	THOMAS	67	THOMAS	68	THOMAS	69	THOMAS
66	THOMAS	5-7pm	MSJC	67	THOMAS	68	THOMAS	69	THOMAS	70	THOMAS
67	THOMAS	5-7pm	MSJC	68	THOMAS	69	THOMAS	70	THOMAS	71	THOMAS
68	THOMAS	5-7pm	MSJC	69	THOMAS	70	THOMAS	71	THOMAS	72	THOMAS
69	THOMAS	5-7pm	MSJC	70	THOMAS	71	THOMAS	72	THOMAS	73	THOMAS
70	THOMAS	5-7pm	MSJC	71	THOMAS	72	THOMAS	73	THOMAS	74	THOMAS
71	THOMAS	5-7pm	MSJC	72	THOMAS	73	THOMAS	74	THOMAS	75	THOMAS
72	THOMAS	5-7pm	MSJC	73	THOMAS	74	THOMAS	75	THOMAS	76	THOMAS
73	THOMAS	5-7pm	MSJC	74	THOMAS	75	THOMAS	76	THOMAS	77	THOMAS
74	THOMAS	5-7pm	MSJC	75	THOMAS	76	THOMAS	77	THOMAS	78	THOMAS
75	THOMAS	5-7pm	MSJC	76	THOMAS	77	THOMAS	78	THOMAS	79	THOMAS
76	THOMAS	5-7pm	MSJC	77	THOMAS	78	THOMAS	79	THOMAS	80	THOMAS
77	THOMAS	5-7pm	MSJC	78	THOMAS	79	THOMAS	80	THOMAS	81	THOMAS
78	THOMAS	5-7pm	MSJC	79	THOMAS	80	THOMAS	81	THOMAS	82	THOMAS
79	THOMAS	5-7pm	MSJC	80	THOMAS	81	THOMAS	82	THOMAS	83	THOMAS
80	THOMAS	5-7pm	MSJC	81	THOMAS	82	THOMAS	83	THOMAS	84	THOMAS
81	THOMAS	5-7pm	MSJC	82	THOMAS	83	THOMAS	84	THOMAS	85	THOMAS
82	THOMAS	5-7pm	MSJC	83	THOMAS	84	THOMAS	85	THOMAS	86	THOMAS
83	THOMAS	5-7pm	MSJC	84	THOMAS	85	THOMAS	86	THOMAS	87	THOMAS
84	THOMAS	5-7pm	MSJC	85	THOMAS	86	THOMAS	87	THOMAS	88	THOMAS
85	THOMAS	5-7pm	MSJC	86	THOMAS	87	THOMAS	88	THOMAS	89	THOMAS
86	THOMAS	5-7pm	MSJC	87	THOMAS	88	THOMAS	89	THOMAS	90	THOMAS
87	THOMAS	5-7pm	MSJC	88	THOMAS	89	THOMAS	90	THOMAS	91	THOMAS
88	THOMAS	5-7pm	MSJC	89	THOMAS	90	THOMAS	91	THOMAS	92	THOMAS
89	THOMAS	5-7pm	MSJC	90	THOMAS	91	THOMAS	92	THOMAS	93	THOMAS
90	THOMAS	5-7pm	MSJC	91	THOMAS	92	THOMAS	93	THOMAS	94	THOMAS
91	THOMAS	5-7pm	MSJC	92	THOMAS	93	THOMAS	94	THOMAS	95	THOMAS
92	THOMAS	5-7pm	MSJC	93	THOMAS	94	THOMAS	95	THOMAS	96	THOMAS
93	THOMAS	5-7pm	MSJC	94	THOMAS	95	THOMAS	96	THOMAS	97	THOMAS
94	THOMAS	5-7pm	MSJC	95	THOMAS	96	THOMAS	97	THOMAS	98	THOMAS
95	THOMAS	5-7pm	MSJC	96	THOMAS	97	THOMAS	98	THOMAS	99	THOMAS
96	THOMAS	5-7pm	MSJC	97	THOMAS	98	THOMAS	99	THOMAS	100	THOMAS