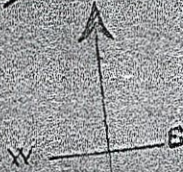


Tucker County  
 Sheriff's Office  
 Instrument 2020-0100100100010004  
 04/19/2020 10:00:00 AM  
 PLAT 2  
 BOOK 1 A Page 704  
 Pages Recorded 1

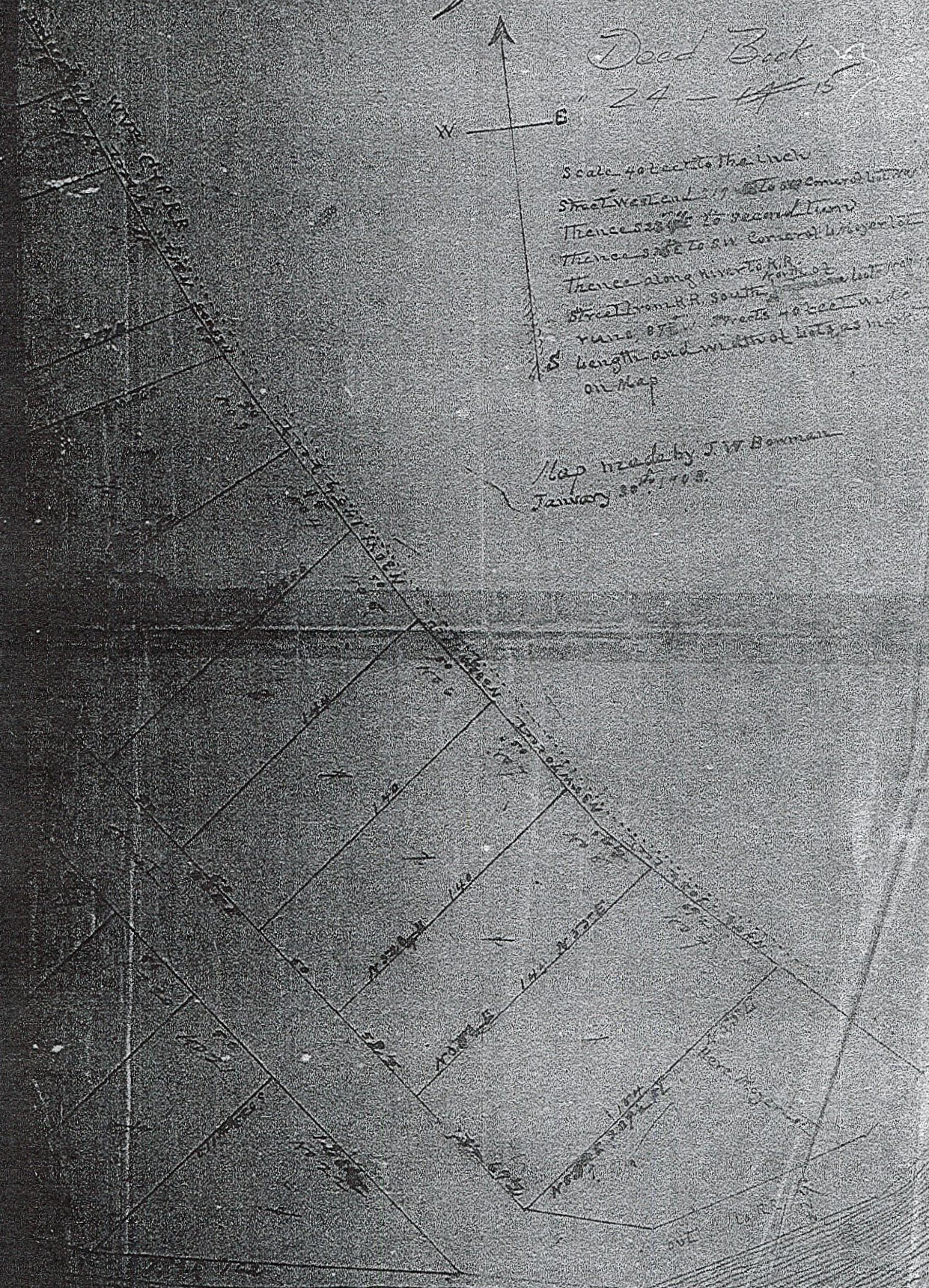
# Map of Elk Land Lumber Company's Addition to the Town of Hamilton, N. H.

Deed Book  
" 24 - 145



Scale 40 feet to the inch  
Street West and 17 lots according to  
Thence south to second line  
Thence east to an corner of a lot  
Thence along river to N.B.  
Street from N.B. South <sup>front of</sup> corner of lot  
runs 87 1/2 feet 40 feet wide  
length and width of lots as shown  
on map

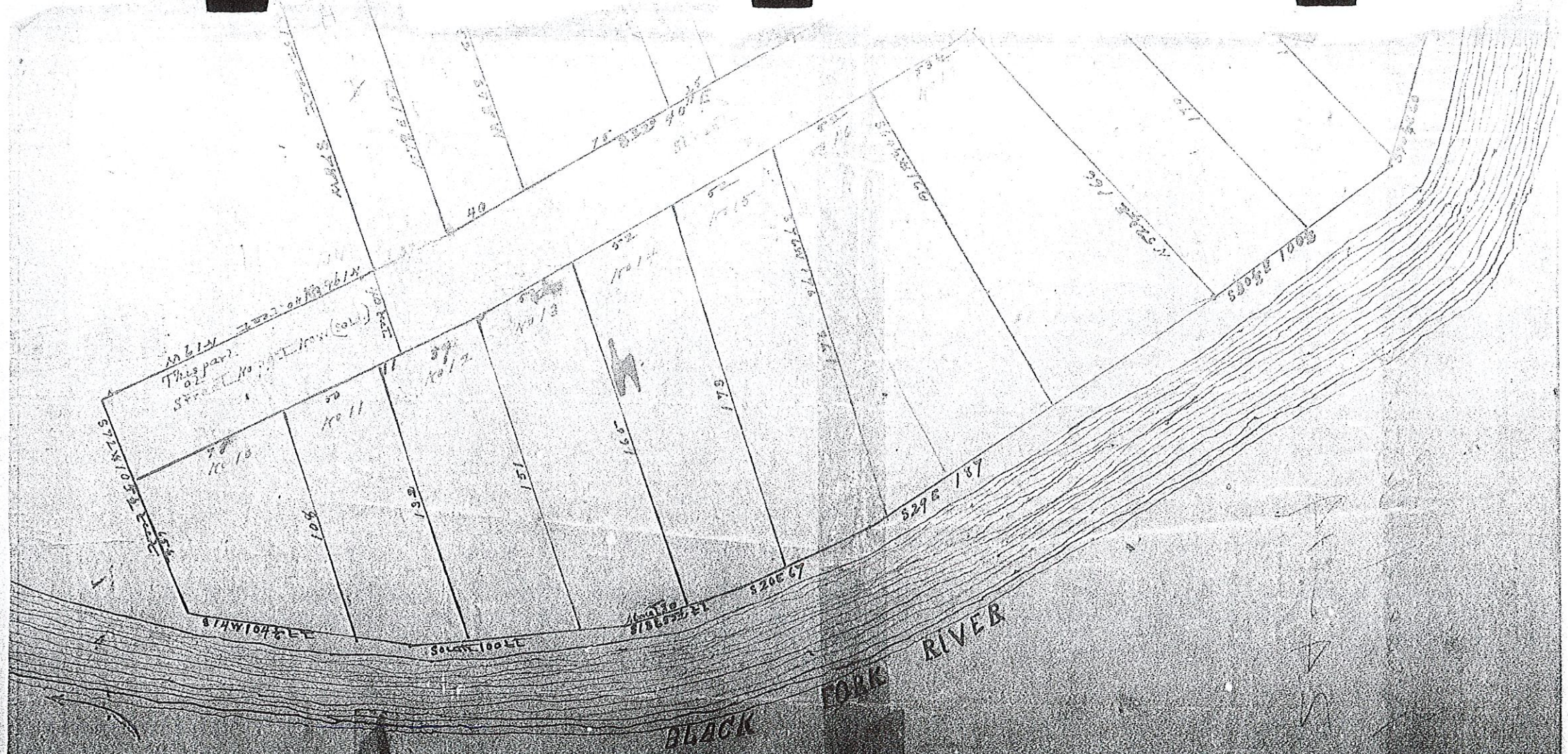
Map made by J. W. Bonmar  
January 20th, 1903.





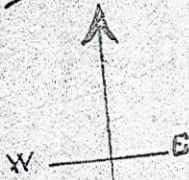


15K24 PG 16



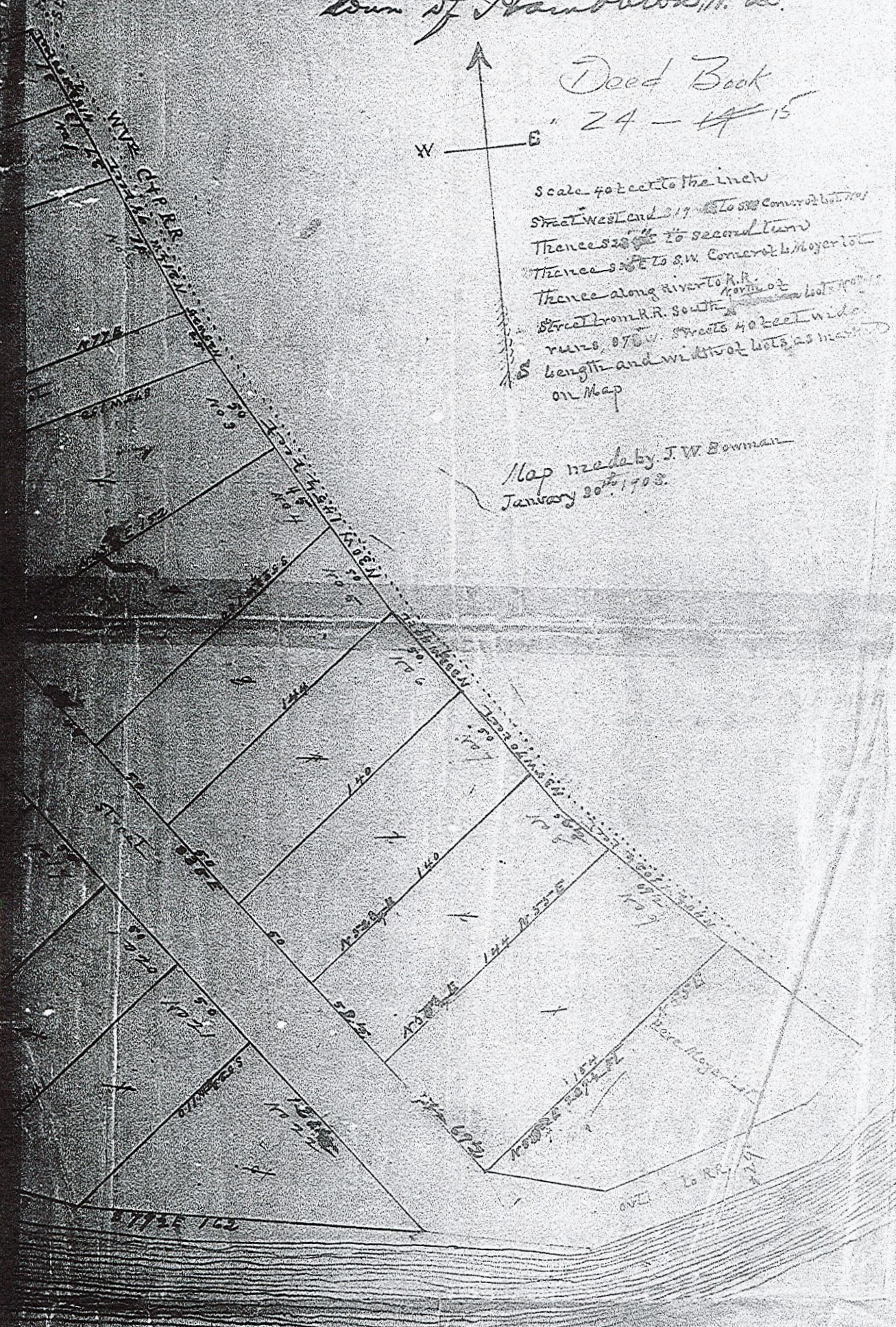
# Map of Elk Lake Lumber Company's Addition to the Town of Hamblton, N. D.

Deed Book  
" 24 - 15



Scale 40 feet to the inch  
Start West end of 1st to SW corner of lot nos  
Thence S 88° E to second turn  
Thence S 88° E to SW corner of L. Meyer lot  
Thence along river to R.R.  
Street from R.R. south  
runs 875 ft. streets 40 feet wide  
length and width of lots as marked  
on Map

Map made by J.W. Bowman  
January 30<sup>th</sup> 1903.



Hulings

West Virginia.

OCTOBER 19, 1869.

*used to be Youde-ton*

CLARK & McNEELY.

CENTRE STREET.

C. B. CLARK & McNEELY.

CENTRE STREET.

FIFTH STREET.

SIXTH STREET.

SEVENTH STREET.

S. R. COGAN

HULLERS LUMBER Co.

AP. HILL

L. MOYER

B. L. HARMON

W. H. BRYANT

W. C. MINNIE

W. C. MINNIE

W. C. MINNIE

W. C. MINNIE

W. C. MINNIE

W. C. MINNIE

W. C. MINNIE

W. C. MINNIE

W. C. MINNIE

W. C. MINNIE

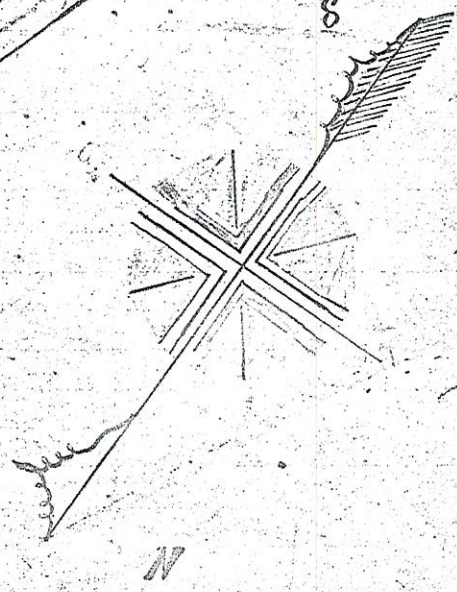
W. C. MINNIE

W. C. MINNIE

W. C. MINNIE

W. C. MINNIE

W. C. MINNIE



109  
150  
114  
113  
112  
111  
110  
109  
108  
107  
106  
105  
104  
103  
102  
101  
100  
99  
98  
97  
96  
95  
94  
93  
92  
91  
90  
89  
88  
87  
86  
85  
84  
83  
82  
81  
80  
79  
78  
77  
76  
75  
74  
73  
72  
71  
70  
69  
68  
67  
66  
65  
64  
63  
62  
61  
60  
59  
58  
57  
56  
55  
54  
53  
52  
51  
50  
49  
48  
47  
46  
45  
44  
43  
42  
41  
40  
39  
38  
37  
36  
35  
34  
33  
32  
31  
30  
29  
28  
27  
26  
25  
24  
23  
22  
21  
20  
19  
18  
17  
16  
15  
14  
13  
12  
11  
10  
9  
8  
7  
6  
5  
4  
3  
2  
1

Indicates corner stone.  
 Bearing of Streets.  
 R. R. St. to 11th. Alley from 5th. Street,  $S 25^{\circ} 15' E$ .  
 " " from 3rd St. to 5th St.  $S 25^{\circ} 15' E$ .  
 " " 11th. Alley to 7th. St.  $S 13^{\circ} 28' E$ .  
 Centre St. from 3rd St. to 5th. St.  $S 23^{\circ} 15' E$ .  
 " " 5th St. to 7th. St.  $S 25^{\circ} 15' E$ .  
 " " 7th St. South  $S 42^{\circ} 52' E$ .  
 Cross Streets from R.R. St. to Centre.  $N 66^{\circ} 15' E$ .  
 " " Centre North  $N 53^{\circ} 05' E$ .

State of West Virginia.  
 Tucker County Court Clerk's office.  
 The foregoing plat of the town of Hidinge,  
 was on this the 12th day of February 1870, pro-  
 duced to me in my office and there in  
 duly admitted to record.

Teste: A. B. Bonifield Clerk.  
 by C. A. Minner, Deputy.

Sent to L. C. B. P. Hoff  
 by Harry Payne.  
 Feb. 22nd 1870.  
 A. B. Bonifield Clerk  
 by C. A. Minner, Deputy.

