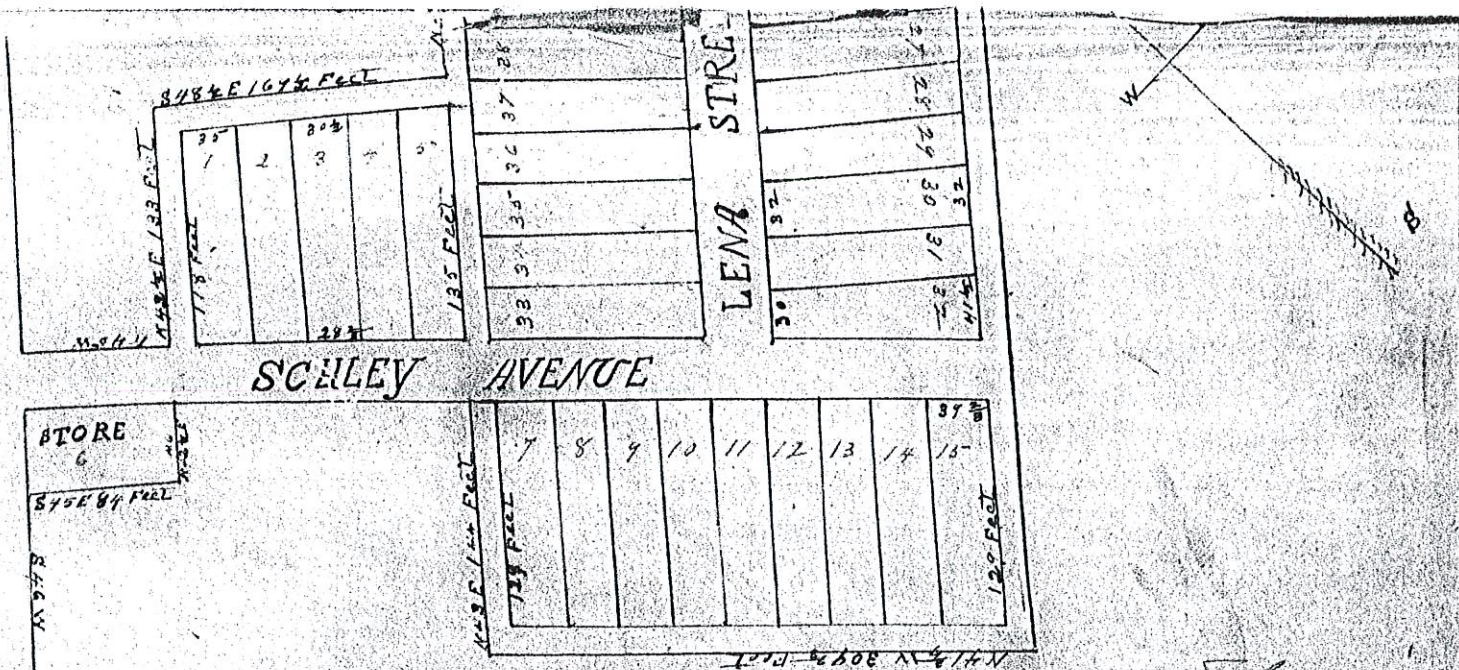


BR 21 A9 397



Scale 60 Feet to inch
 Street North 40 Feet wide, Bearing N43°E S48°W
 All Alleys 15 Feet wide
 Street West 85 Feet wide to store lot, bearing N41 1/2°W
 This street 32 1/2 Feet wide at store front.
 All lots 30 Feet wide except those marked with Black Ink;
 These as Black Figures indicate size
 Figures in Red indicate the number of lots

MAP MADE THE 31ST DAY OF JULY 1802
 BY J.W. BOWMAN.

This plot belongs to
 Seed Brook
 21-397

Just and Combs Addition
 to the Town of Hambleton W. Va.