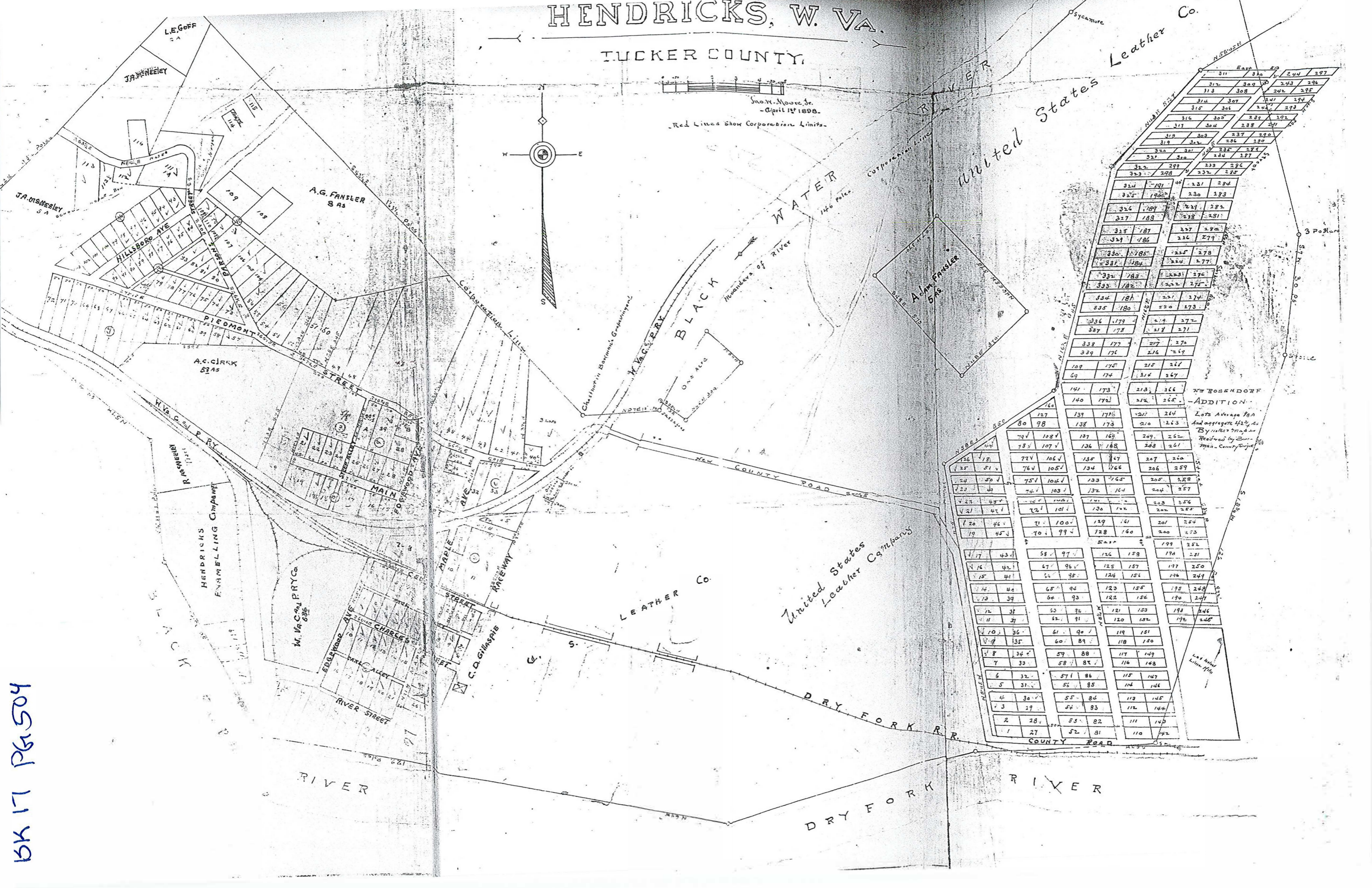
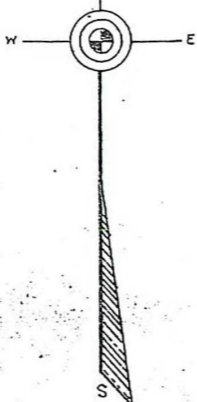


HENDRICKS, W. VA.

TUCKER COUNTY



Sno. W. Moore, Jr.
- April 1st 1898.
Red Lines Show Corporation Limits.



United States

A. G. Fansler
5 45

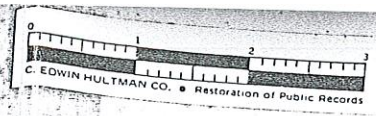
LEATHER Co.

United States
Leather Company

78 ROSENDORF
- ADDITION -
Lots Average 86A
And aggregate 42 1/2 ac
By order of Board
Resolved by Board
Main Camp, Spring

BK 17 PG 504

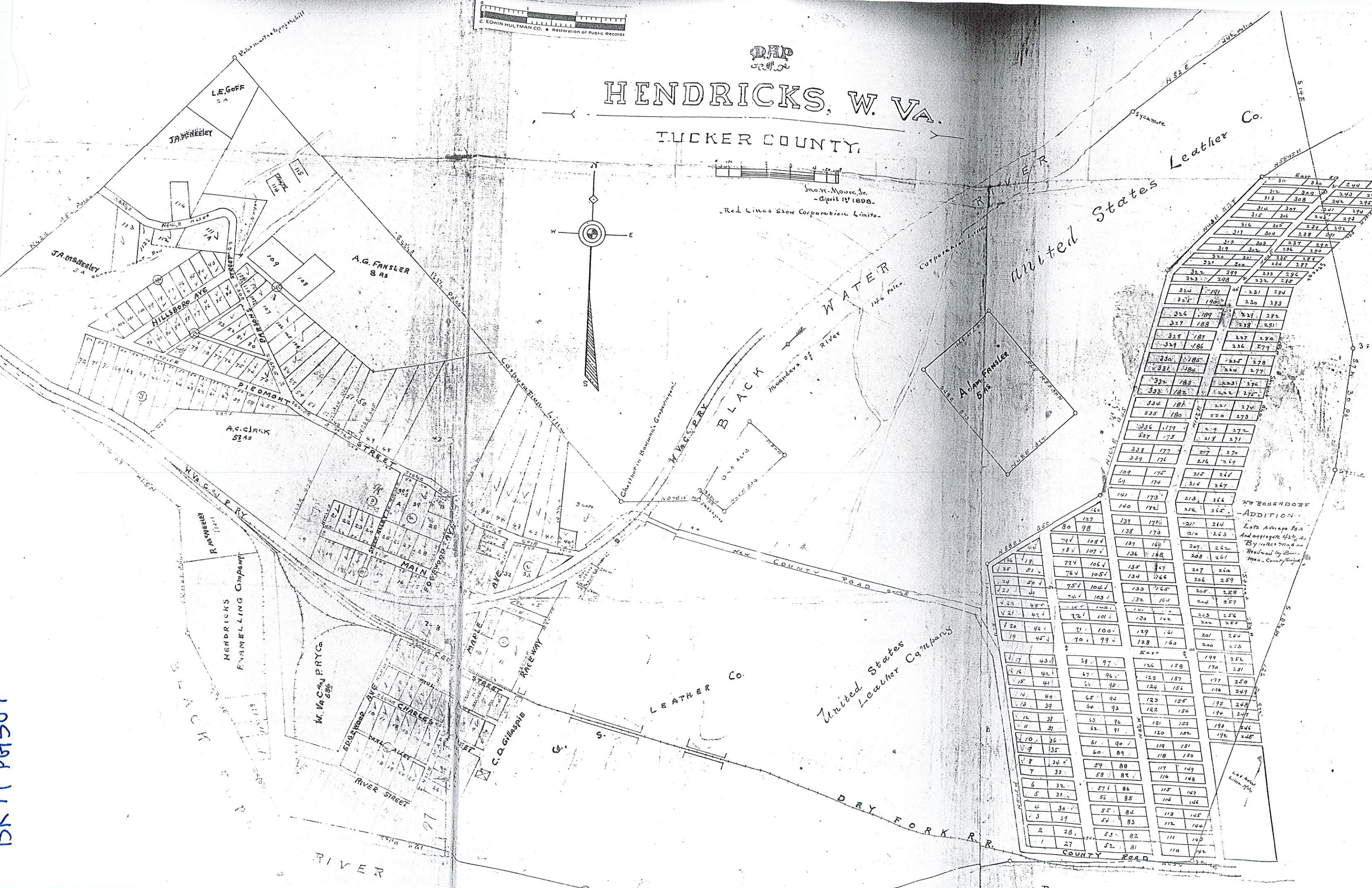
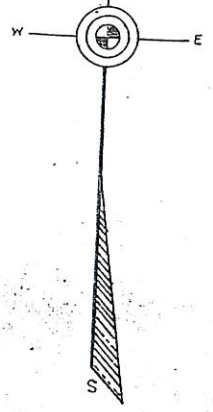
BK 17 PG 504



HENDRICKS, W. VA.

TUCKER COUNTY,

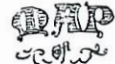
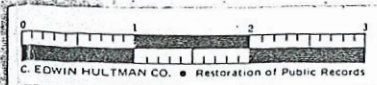
Sho. W. Moore, Jr.
- April 1st 1898.
Red Lines Show Corporation Limits.



311	310	244	25
312	309	243	25
313	308	242	25
314	307	241	25
315	306	240	25
316	305	239	25
317	304	238	25
318	303	237	25
319	302	236	25
320	301	235	25
321	300	234	25
322	299	233	25
323	298	232	25
324	297	231	25
325	296	230	25
326	295	229	25
327	294	228	25
328	293	227	25
329	292	226	25
330	291	225	25
331	290	224	25
332	289	223	25
333	288	222	25
334	287	221	25
335	286	220	25
336	285	219	25
337	284	218	25
338	283	217	25
339	282	216	25
109	175	215	26
69	174	214	26
141	173	213	26
140	172	212	26
127	171	211	26
139	170	210	26
138	169	209	26
137	168	208	26
136	167	207	26
135	166	206	26
134	165	205	26
133	164	204	26
132	163	203	26
131	162	202	26
130	161	201	26
129	160	200	26
128	159	199	26
127	158	198	26
126	157	197	26
125	156	196	26
124	155	195	26
123	154	194	26
122	153	193	26
121	152	192	26
120	151	191	26
119	150	190	26
118	149	189	26
117	148	188	26
116	147	187	26
115	146	186	26
114	145	185	26
113	144	184	26
112	143	183	26
111	142	182	26
110	141	181	26
109	140	180	26
108	139	179	26
107	138	178	26
106	137	177	26
105	136	176	26
104	135	175	26
103	134	174	26
102	133	173	26
101	132	172	26
100	131	171	26
99	130	170	26
98	129	169	26
97	128	168	26
96	127	167	26
95	126	166	26
94	125	165	26
93	124	164	26
92	123	163	26
91	122	162	26
90	121	161	26
89	120	160	26
88	119	159	26
87	118	158	26
86	117	157	26
85	116	156	26
84	115	155	26
83	114	154	26
82	113	153	26
81	112	152	26
80	111	151	26
79	110	150	26
78	109	149	26
77	108	148	26
76	107	147	26
75	106	146	26
74	105	145	26
73	104	144	26
72	103	143	26
71	102	142	26
70	101	141	26
69	100	140	26
68	99	139	26
67	98	138	26
66	97	137	26
65	96	136	26
64	95	135	26
63	94	134	26
62	93	133	26
61	92	132	26
60	91	131	26
59	90	130	26
58	89	129	26
57	88	128	26
56	87	127	26
55	86	126	26
54	85	125	26
53	84	124	26
52	83	123	26
51	82	122	26
50	81	121	26
49	80	120	26
48	79	119	26
47	78	118	26
46	77	117	26
45	76	116	26
44	75	115	26
43	74	114	26
42	73	113	26
41	72	112	26
40	71	111	26
39	70	110	26
38	69	109	26
37	68	108	26
36	67	107	26
35	66	106	26
34	65	105	26
33	64	104	26
32	63	103	26
31	62	102	26
30	61	101	26
29	60	100	26
28	59	99	26
27	58	98	26
26	57	97	26
25	56	96	26
24	55	95	26
23	54	94	26
22	53	93	26
21	52	92	26
20	51	91	26
19	50	90	26
18	49	89	26
17	48	88	26
16	47	87	26
15	46	86	26
14	45	85	26
13	44	84	26
12	43	83	26
11	42	82	26
10	41	81	26
9	40	80	26
8	39	79	26
7	38	78	26
6	37	77	26
5	36	76	26
4	35	75	26
3	34	74	26
2	33	73	26
1	32	72	26

W. ROSENDORF
ADDITION
Lots Average 180
And aggregate 4200 sq
By plat recorded
Recorded by
Trans. Company

This plat belongs to
111 Bond Book 17-504



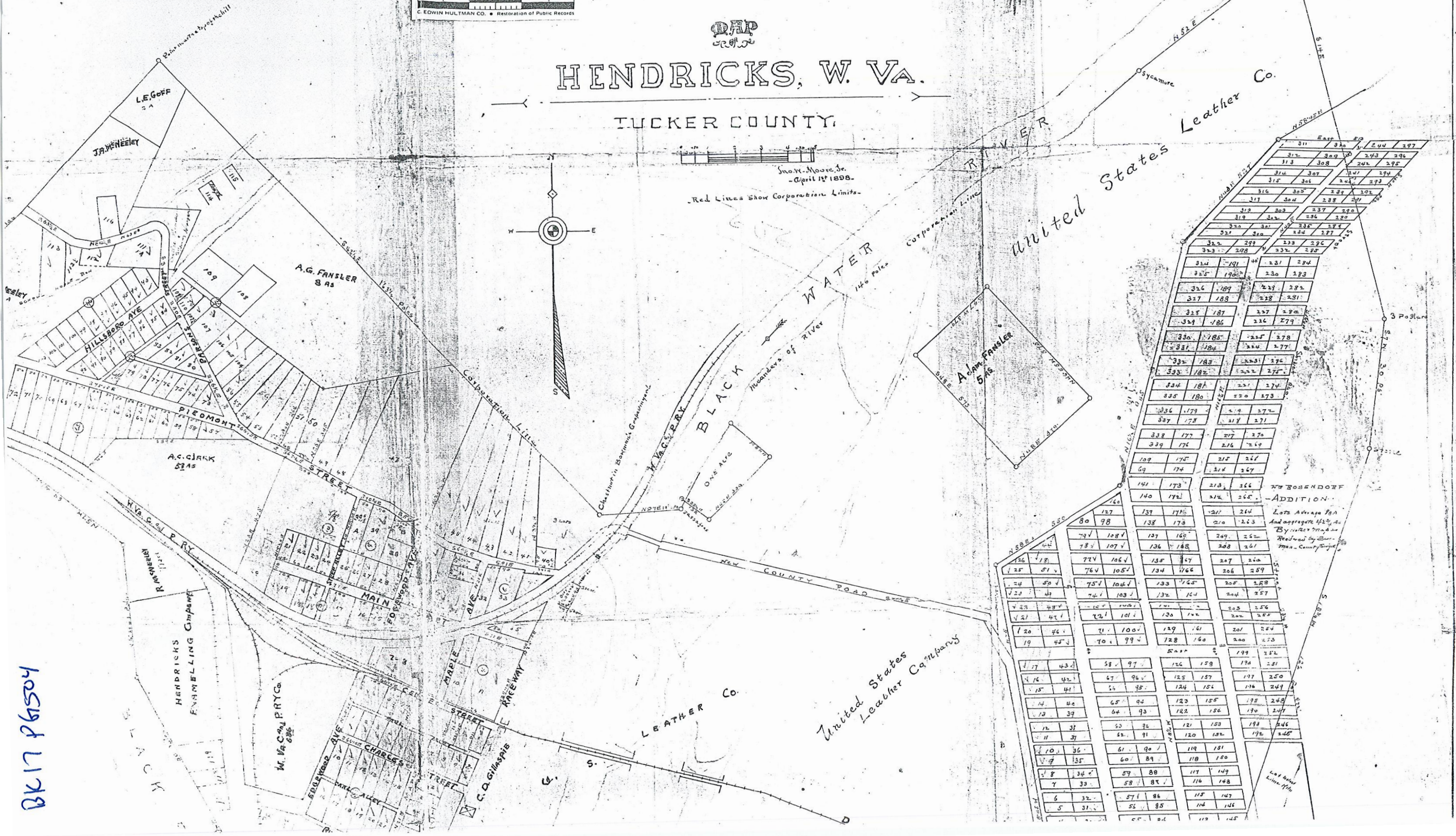
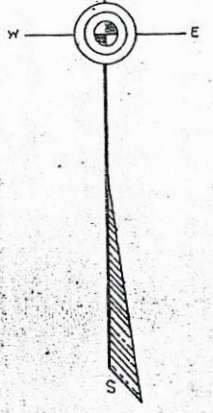
HENDRICKS, W. VA.

TUCKER COUNTY,



Sho. W. Moore, Jr.
April 1st 1898.

Red Lines Show Corporation Limits.



United States Leather Co.

311	310	244	297
312	309	243	296
313	308	242	295
314	307	241	294
315	306	240	293
316	305	239	292
317	304	238	291
318	303	237	290
319	302	236	289
320	301	235	288
321	300	234	287
322	299	233	286
323	298	232	285
324	191	231	284
325	190	230	283
326	189	229	282
327	188	228	281
328	187	227	280
329	186	226	279
330	185	225	278
331	184	224	277
332	183	223	276
333	182	222	275
334	181	221	274
335	180	220	273
336	179	219	272
337	178	218	271
338	177	217	270
339	176	216	269
109	175	215	268
69	174	214	267
141	173	213	266
140	172	212	265
139	171	211	264
138	170	210	263
137	169	209	262
136	168	208	261
135	167	207	260
134	166	206	259
133	165	205	258
132	164	204	257
131	163	203	256
130	162	202	255
129	161	201	254
128	160	200	253
127	159	199	252
126	158	198	251
125	157	197	250
124	156	196	249
123	155	195	248
122	154	194	247
121	153	193	246
120	152	192	245
119	151	191	244
118	150	190	243
117	149	189	242
116	148	188	241
115	147	187	240
114	146	186	239
113	145	185	238

W. ROSENDOFF
-ADDITION-
Lots Average 88A
And adjacent 1/2 of A
By reference to
Record by
Man. Com. Surgo

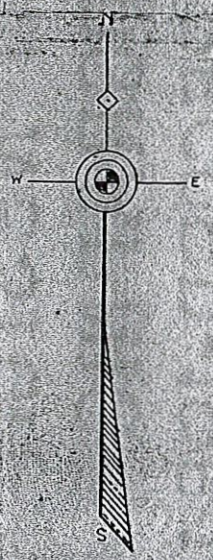
BK 17 PG 504

This Map belongs
to West Book 17-504

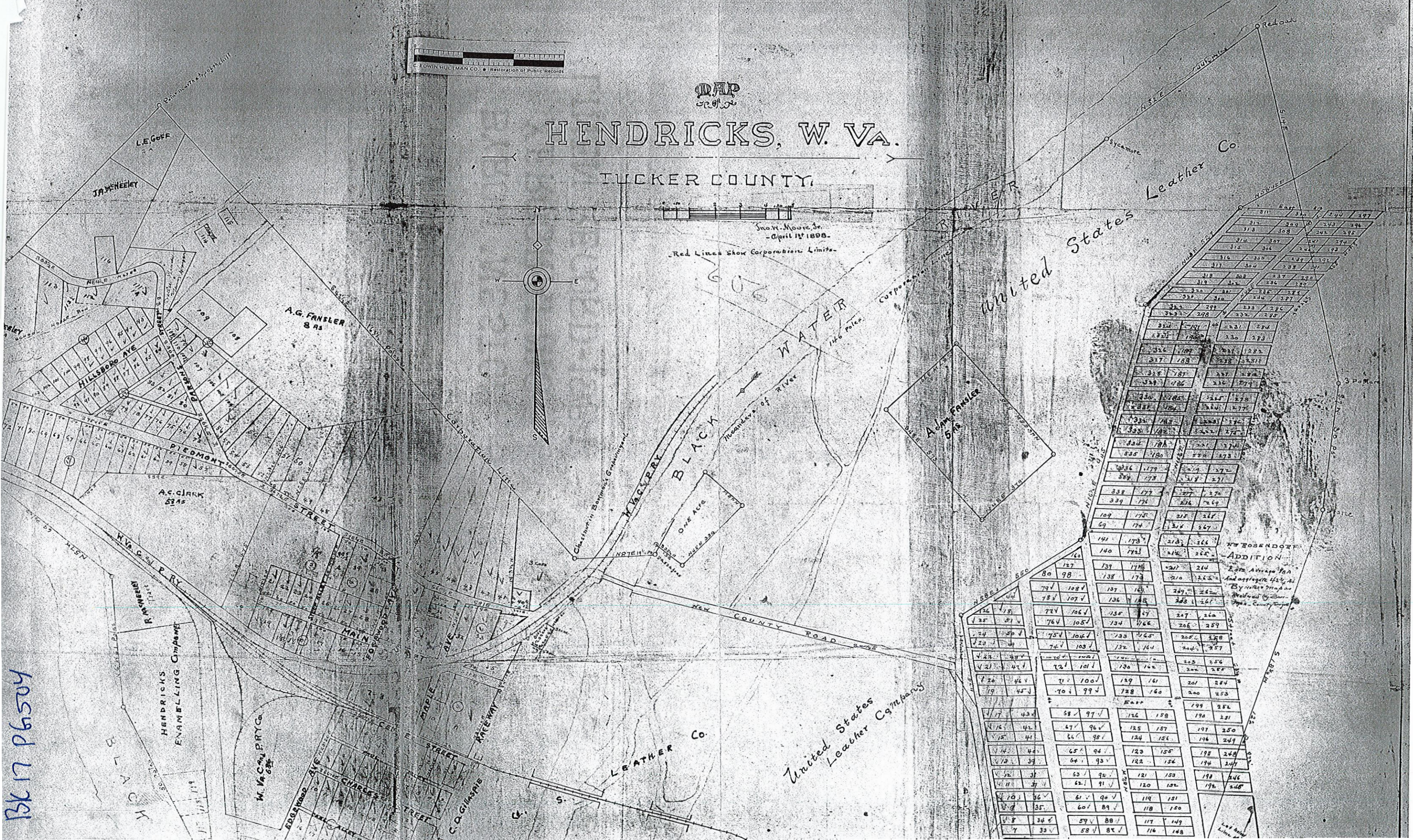


HENDRICKS, W. VA.

TUCKER COUNTY



Snodgrass, Moore, Jr.
April 1st 1898.
Red Lines Show Corporation Limits.



United States Leather Co.

ADDITION

Lot 240 to 244
and adjacent lots
by order of the
Trustees of the
Trust Company

311	310	240	297
312	309	243	296
313	308	246	295
314	307	247	294
315	306	248	293
316	305	249	292
317	304	250	291
318	303	251	290
319	302	252	289
320	301	253	288
321	300	254	287
322	299	255	286
323	298	256	285
324	297	257	284
325	296	258	283
326	295	259	282
327	294	260	281
328	293	261	280
329	292	262	279
330	291	263	278
331	290	264	277
332	289	265	276
333	288	266	275
334	287	267	274
335	286	268	273
336	285	269	272
337	284	270	271
338	283	271	270
339	282	272	269
109	175	215	261
69	174	216	262
141	173	217	263
140	172	218	264
137	171	219	265
138	170	220	266
139	169	221	267
136	168	222	268
126	167	223	269
125	166	224	270
124	165	225	271
123	164	226	272
122	163	227	273
121	162	228	274
120	161	229	275
119	160	230	276
118	159	231	277
117	158	232	278
116	157	233	279
115	156	234	280
114	155	235	281
113	154	236	282
112	153	237	283
111	152	238	284
110	151	239	285
109	150	240	286
108	149	241	287
107	148	242	288
106	147	243	289
105	146	244	290
104	145	245	291
103	144	246	292
102	143	247	293
101	142	248	294
100	141	249	295
99	140	250	296
98	139	251	297
97	138	252	298
96	137	253	299
95	136	254	300
94	135	255	301
93	134	256	302
92	133	257	303
91	132	258	304
90	131	259	305
89	130	260	306
88	129	261	307
87	128	262	308
86	127	263	309
85	126	264	310
84	125	265	311
83	124	266	312
82	123	267	313
81	122	268	314
80	121	269	315
79	120	270	316
78	119	271	317
77	118	272	318
76	117	273	319
75	116	274	320
74	115	275	321
73	114	276	322
72	113	277	323
71	112	278	324
70	111	279	325
69	110	280	326
68	109	281	327
67	108	282	328
66	107	283	329
65	106	284	330
64	105	285	331
63	104	286	332
62	103	287	333
61	102	288	334
60	101	289	335
59	100	290	336
58	99	291	337
57	98	292	338
56	97	293	339
55	96	294	340
54	95	295	341
53	94	296	342
52	93	297	343
51	92	298	344
50	91	299	345
49	90	300	346
48	89	301	347
47	88	302	348
46	87	303	349
45	86	304	350
44	85	305	351
43	84	306	352
42	83	307	353
41	82	308	354
40	81	309	355
39	80	310	356
38	79	311	357
37	78	312	358
36	77	313	359
35	76	314	360
34	75	315	361
33	74	316	362
32	73	317	363
31	72	318	364
30	71	319	365
29	70	320	366
28	69	321	367
27	68	322	368
26	67	323	369
25	66	324	370
24	65	325	371
23	64	326	372
22	63	327	373
21	62	328	374
20	61	329	375
19	60	330	376
18	59	331	377
17	58	332	378
16	57	333	379
15	56	334	380
14	55	335	381
13	54	336	382
12	53	337	383
11	52	338	384
10	51	339	385
9	50	340	386
8	49	341	387
7	48	342	388
6	47	343	389
5	46	344	390
4	45	345	391
3	44	346	392
2	43	347	393
1	42	348	394

BK 17 P 6504