

COUNTY BOUNDARY ATTESTATION

STATE OF WEST VIRGINIA

This certification supports West Virginia's participation in the **United States Census Bureau Boundary and Annexation Survey (BAS)** and related redistricting coordination programs including the **Block Boundary Suggestion Project (BBSP)**.

The **County Commission** listed below certifies the municipal boundary information submitted as part of this census geographic submission.

1. County Information

County Name: Tucker

Effective Date of Boundaries Reflected: 5/5/2026 (GIS map boundary file date)

Date of Submission: _____

2. Municipalities Included in This Submission

The municipalities listed below are included in this county submission to the **U.S. Census Bureau**.

| Municipality | GEOID | Boundary Update Submitted | Authorization Source County/Municipal/ Both |
|--------------|---------|---------------------------|--|
| Davis | 5420428 | No | N/A |
| Hambleton | 5434492 | Yes | County |
| Hendricks | 5436460 | Yes | County |
| Parsons | 5462284 | Yes | Both |
| Thomas | 5480020 | Yes | Both |

(Attach additional pages if necessary.)

3. County Commission Certification

The County Commission of Tucker County certifies that the municipal boundaries represented in this submission reflect the best available county records of municipal corporate limits, annexations, and boundary adjustments derived from county tax mapping records, GIS records, annexation filings, and other available documentation maintained by the county. In cases where original annexation or boundary documentation cannot be located, the County Commission certifies that the boundaries represented reflect the most accurate boundary location available based on county records and GIS data.

4. County Technical Points of Contact

| | |
|---|---|
| Name: <u>Lisa Gothelf</u> <u>Greg Stevens</u> | Office / Role: <u>Tucker County Deputy Clerk</u> <u>Tucker County Assessor</u> |
| Email: <u>tcclerkoffice@gmail.com</u> <u>gstevens@tuckerassessor.com</u> | Phone: <u>(304) 478-2414 (Clerk)</u> <u>(304) 478-3727 (Assessor)</u> |

5. Data Included in Submission

- ☒ GIS Shapefile ☒ Boundary Map (PDF)
☒ Supporting Documentation ☒ Municipal Attestation Letters

Projection / Coordinate System (if digital): UTM Zone 17 North

File Name(s): BAS26_54093_WholeEntity_inc_places_Tucker.shp

View municipal boundaries online at www.mapwv.gov/BAS

6. County Commission Action

Approved by the County Commission of Tucker County during a duly convened public meeting held on May 13, 2026.

Motion to approve carried by vote of the Commission.

7. County Commission Approval

Signature: Michael Rosenau

Printed Name: Michael Rosenau

Title: Commission President

Date: 5/20/2026

STATE OF WEST VIRGINIA

Municipal Boundary Certification

For U.S. Census Redistricting Data Program Participation
(Block Boundary Suggestion Project / BAS Coordination)

This certification is provided in support of West Virginia's participation in the United States Census Redistricting Data Program pursuant to W. Va. Code §3-1-5(d).

1. Municipality Information

Municipality Name: Parsons

County: Tucker

Effective Date of Boundaries Reflected: May 6, 2026

2. Municipal Attestation

I, Bruce A. Kolun, as the duly authorized representative of the above-named municipality, certify that the boundaries reflected in the attached submission represent the complete and legally effective corporate limits of the municipality as of the effective date listed above.

This certification applies solely to boundaries effective as of the stated date and does not constitute certification of future annexations or boundary actions.

Signature: Bruce A. Kolun

Official Printed Name: Bruce A. Kolun

Official Title: Mayor

Date: May 6, 2026

If the office of Highest Elected Official is vacant, this certification may be executed by the acting official authorized under applicable municipal law.

3. County Clerk Verification

The County Clerk of Tucker County acknowledges review of this municipal boundary certification and its submission.

Signature: Barbara Evans

Printed Name: Barbara Evans

Date: May 7, 2026

4. County Commission Verification

The County Commission of Tucker County affirms that, to the best of its knowledge, the submitted municipal boundaries are consistent with county records and known annexation filings.

Chair, County Commission:

Signature: Michael Roseman

Printed Name: Michael Roseman

Date: May 13, 2026

5. Submission Format

☐ Digital Shapefile

☐ PDF Map

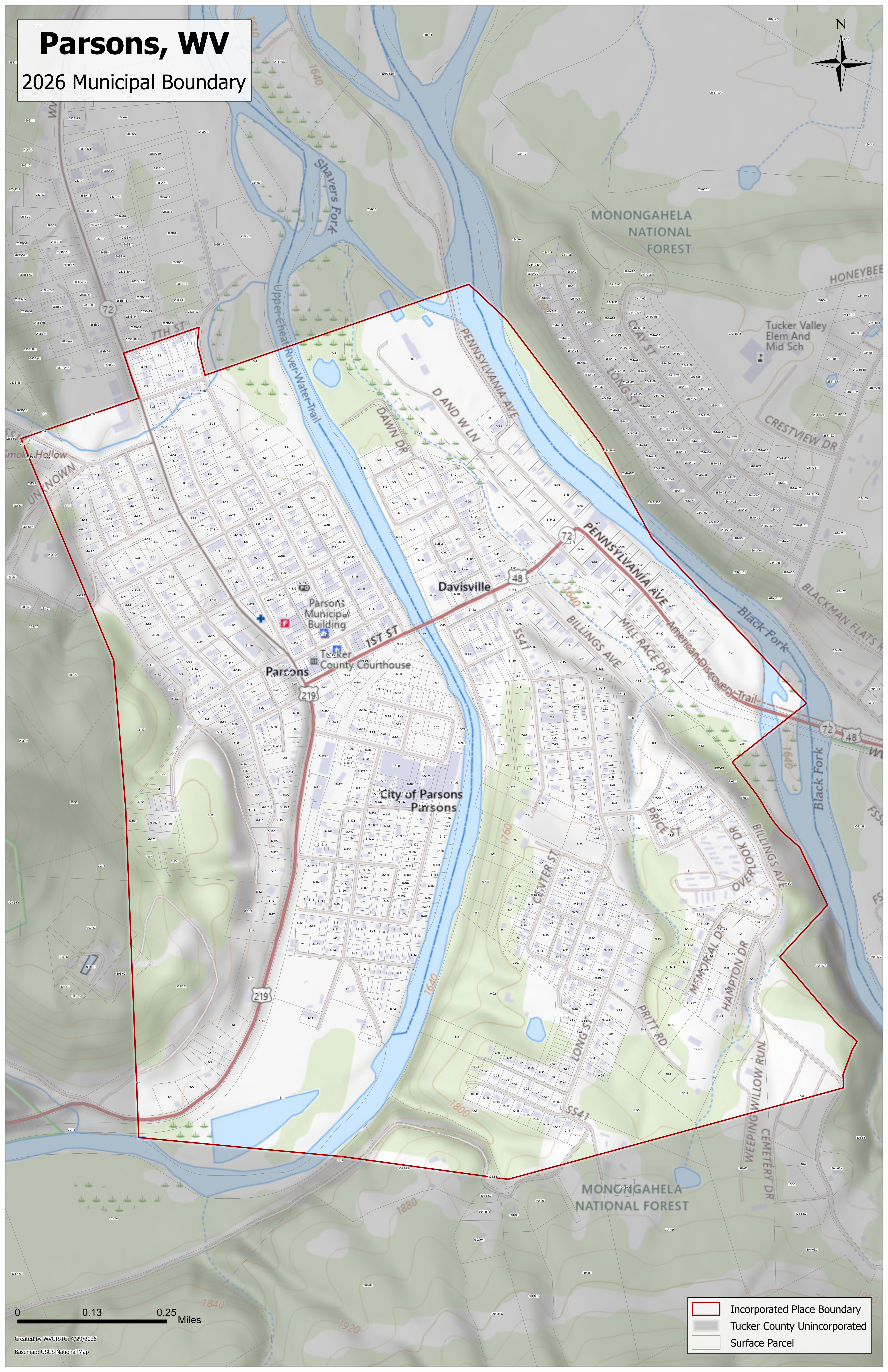
☐ Both

Projection / Coordinate System (if digital): _____

File Name(s): _____

Parsons, WV

2026 Municipal Boundary



0 0.13 0.25 Miles

Created by WVGISTC: 4/29/2026
Basemap: USGS National Map

- Incorporated Place Boundary
- Tucker County Unincorporated
- Surface Parcel

STATE OF WEST VIRGINIA

Municipal Boundary Certification

For U.S. Census Redistricting Data Program Participation
(Block Boundary Suggestion Project / BAS Coordination)

This certification is provided in support of West Virginia's participation in the United States Census Redistricting Data Program pursuant to W. Va. Code §3-1-5(d).

1. Municipality Information

Municipality Name: Thomas

County: Tucker

Effective Date of Boundaries Reflected: 5/6/26

2. Municipal Attestation

I, Rudolph J Flanagan, as the duly authorized representative of the above-named municipality, certify that the boundaries reflected in the attached submission represent the complete and legally effective corporate limits of the municipality as of the effective date listed above.

This certification applies solely to boundaries effective as of the stated date and does not constitute certification of future annexations or boundary actions.

Signature: Rudolph J Flanagan

Official Printed Name: Rudolph J

Official Title: Mayor

Date: 5/6/26

If the office of Highest Elected Official is vacant, this certification may be executed by the acting official authorized under applicable municipal law.

3. County Clerk Verification

The County Clerk of Tucker County acknowledges review of this municipal boundary certification and its submission.

Signature: Barbara Evans

Printed Name: Barbara Evans

Date: May 7, 2026

4. County Commission Verification

The County Commission of Tucker County affirms that, to the best of its knowledge, the submitted municipal boundaries are consistent with county records and known annexation filings.

Chair, County Commission:

Signature: Michael Rosenau

Printed Name: Michael Rosenau

Date: May 13, 2026

5. Submission Format

- ☐ Digital Shapefile
- ☐ PDF Map
- ☐ Both

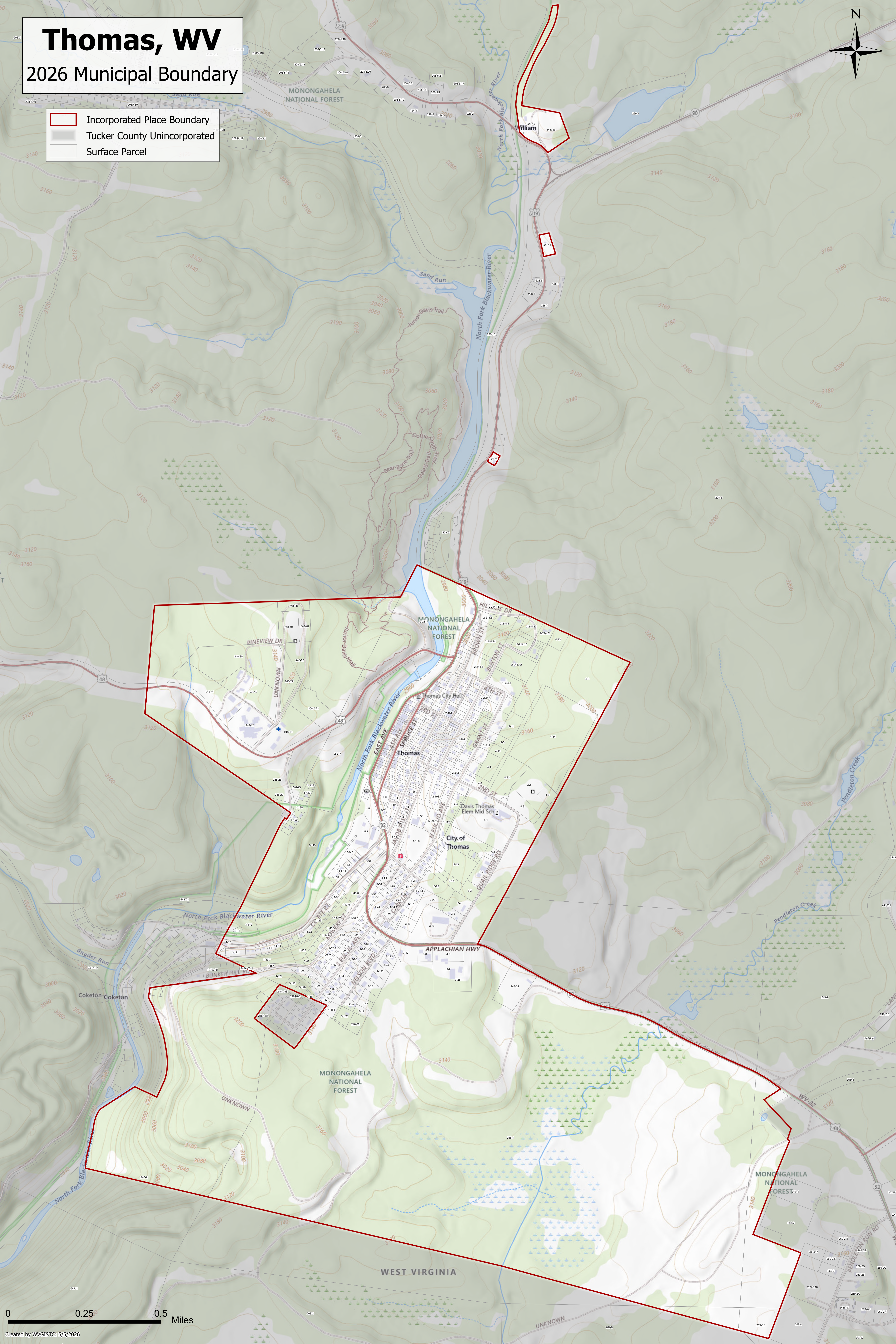
Projection / Coordinate System (if digital): _____

File Name(s): _____

Thomas, WV

2026 Municipal Boundary

-  Incorporated Place Boundary
-  Tucker County Unincorporated
-  Surface Parcel



0 0.25 0.5 Miles