

Tucker County BAS26 Notes

Compiled by Kurt Donaldson, May 2026

WVU GIS Technical Center

GOVID	GEOID for TIGERweb	Name	MTDB Expanded Lsad	NameLSAD for GUPS	County Name
15400020428	5420428	Davis	town	Davis town	Tucker
15400034492	5434492	Hambleton	town	Hambleton town	Tucker
15400036460	5436460	Hendricks	town	Hendricks town	Tucker
15400062284	5462284	Parsons	city	Parsons city	Tucker
15400080020	5480020	Thomas	city	Thomas city	Tucker
25409300000	54093	Tucker	County	Tucker County	Tucker

The map exhibits for the cities of Parsons and Thomas can be viewed from the links below:

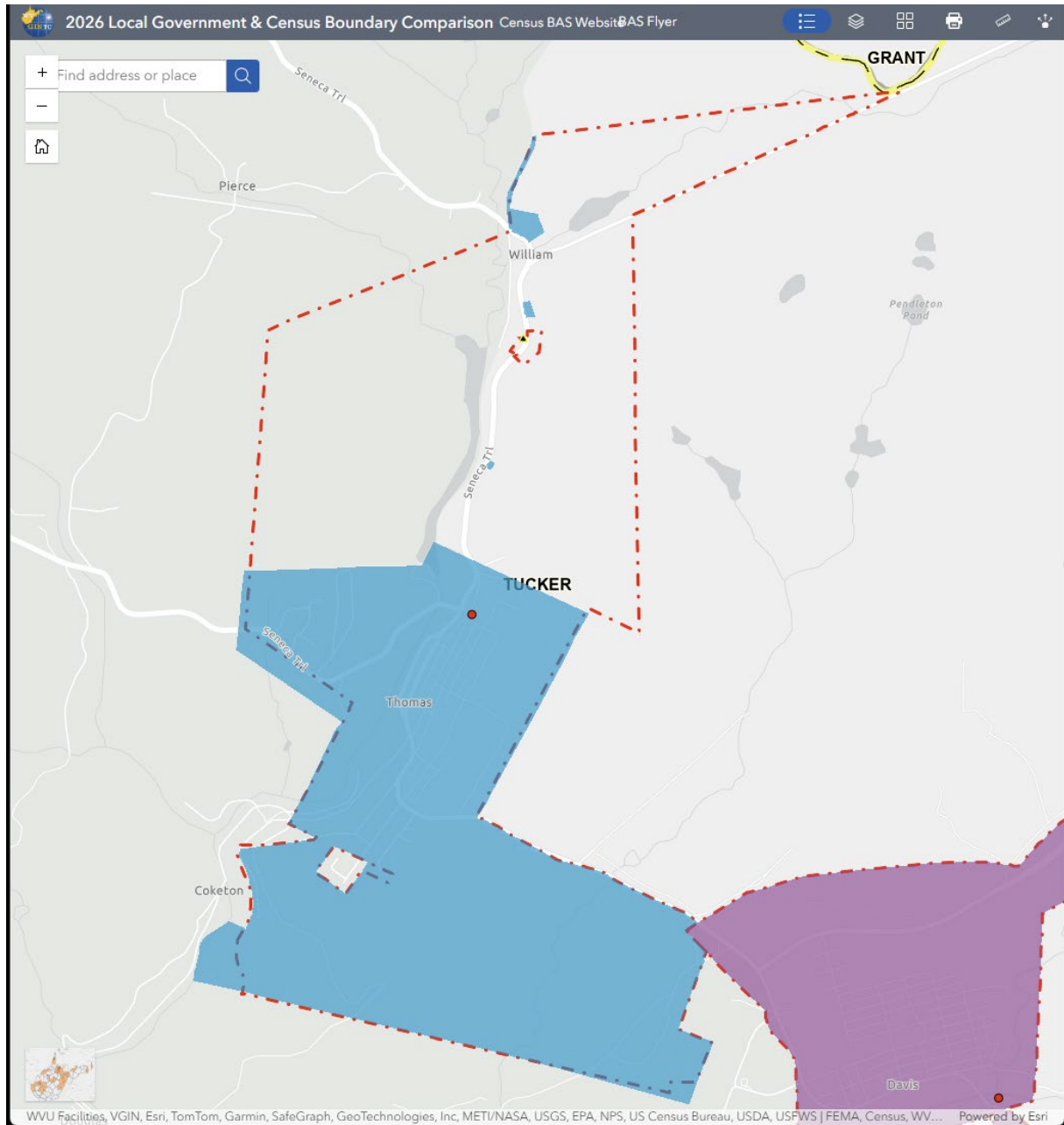
- [Map Exhibit for Parsons](#)
- [Map Exhibit for Thomas](#)

(1) Thomas Corporation

The northern annexation submitted previously to Census was never official and thus needs to be deleted from the Census incorporated place file. The county tax maps are the most reliable data source for the municipal boundary. Note that the corporation does include some discontinuous parcels north of the main corporation boundary. The shared boundary of Davis and Thomas shown by Census will not change.

Recommendation: Submit to Census the current municipal boundary shown on the Assessor's tax maps. A signed mayoral attestation letter and map exhibit are needed for the BAS countywide submission.

Boundary Map View: <https://arcg.is/0WCivv> (Red dash-dot line is current Census boundary; shaded polygons are boundary corrections from Tucker County)



(2) Parsons Corporation

There are no legal documents to verify boundaries, and city documents perished from the 1985 flood. The tax map boundaries provide the most current information about the municipal boundaries. Links to the county's PDF tax maps with municipal boundaries are listed below.

Structures Affected between current Local & Census Boundaries:

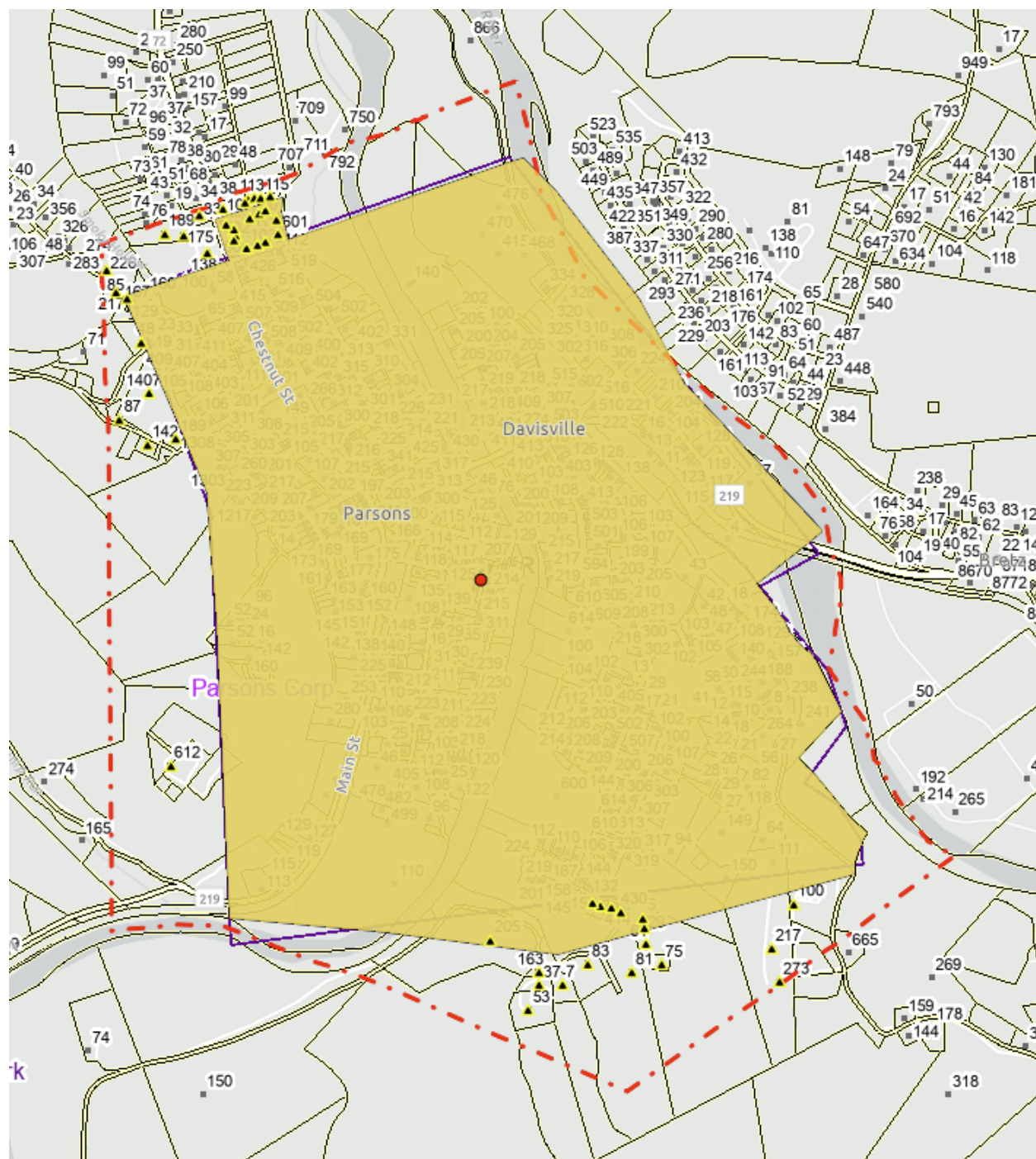
7 structures: Southern boundary of city ([Tax Map 10-10](#))

8 structures: Western boundary of city (([Tax Map 1-283](#) , [Tax Map 10-4](#), [Tax Map 10-2](#))

24 structures: Northern boundary of city ([Tax Map 10-2](#))

Recommendation: Submit to Census the boundary changes according to the boundaries on the county tax maps, along with an attestation letter and map attachment from the Mayor.

Boundary Map View: <https://arcg.is/1rrP1i0>



(3) Hendricks Corporation

The coordinate geometry mapping of the survey plat matches the findings of Andrew Meadows as shown on the BAS Comparison Viewer. No structures are affected.

Recommendation: Submit to Census BAS the boundary corrections according to the survey plat document.

Boundary Map View: <https://arcg.is/0D8WSS2>

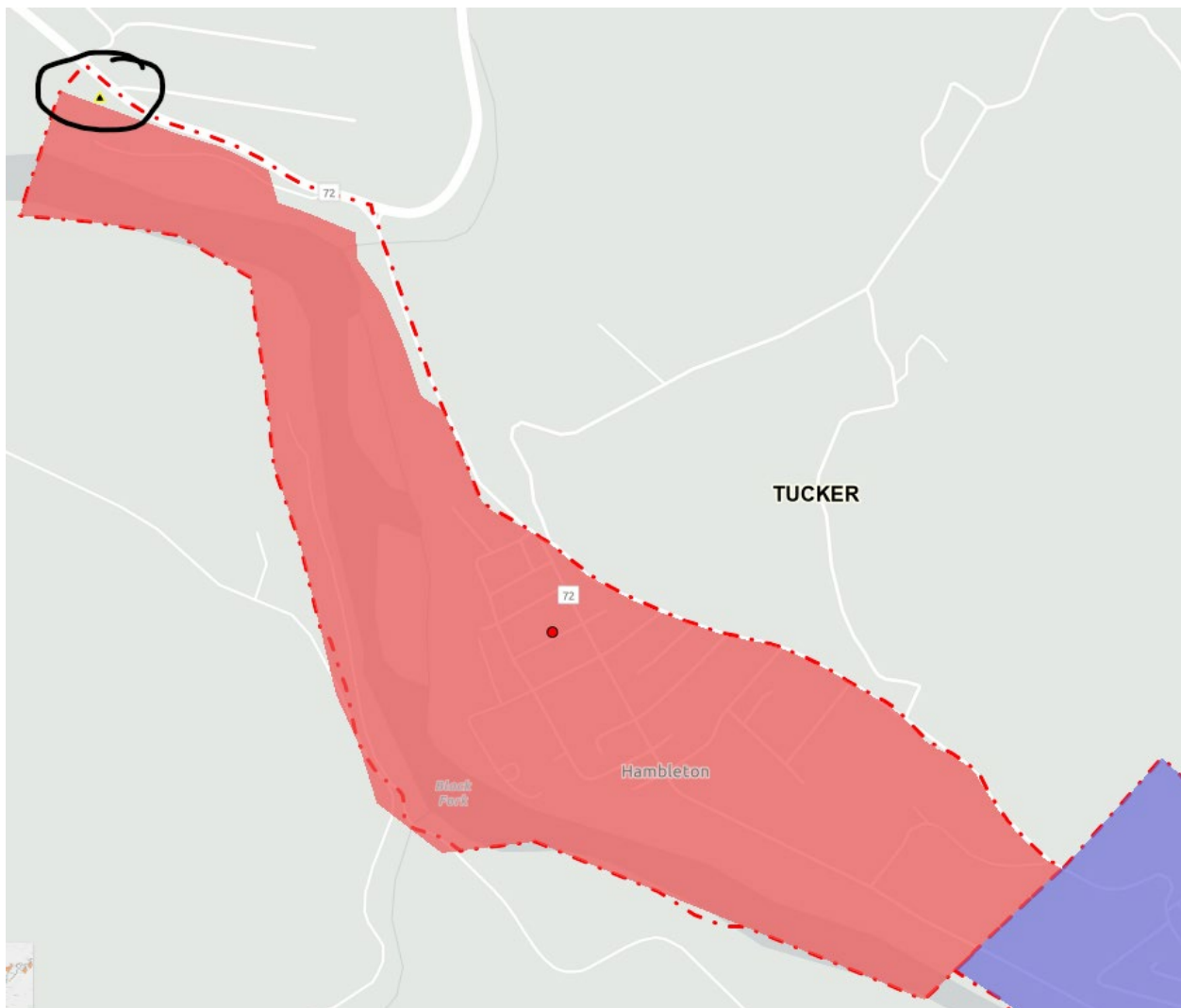


(4) Hambleton Corporation

The coordinate geometry mapping of the town's legal description matches the findings of Andrew Meadows as shown on BAS Comparison Viewer. The structure at [9346 SENECA TRL, PARSONS, WV, 26287](#) should not be part of the Hambleton Corporation in contrast to the Census boundary.

Recommendation: Submit to Census BAS the boundary corrections with the legal description document.

Boundary Map View: <https://arcg.is/0LHbG90>



(5) Davis Corporation

The coordinate geometry mapping of the survey plats matches the findings of Andrew Meadows and the Census Boundary as shown on BAS Comparison Viewer. No structures are affected.

Recommendation: No submission to BAS is necessary since the community boundary matches the Census boundary.

Boundary Map View: <https://arcg.is/0bf0fy3>

