

GA-3 GA-4
GA-6 GA-7

P/6 GA-3-1

P/O GA-4-4

28
1.43 Tot.
Ac.

This Area is Shown on Map 7-M

1"=400'

DISTRICT
LINE

CORP.

OTTER
GASSAWAY

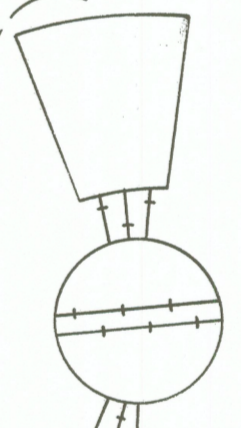
P/7 -36

29
5.215Ac

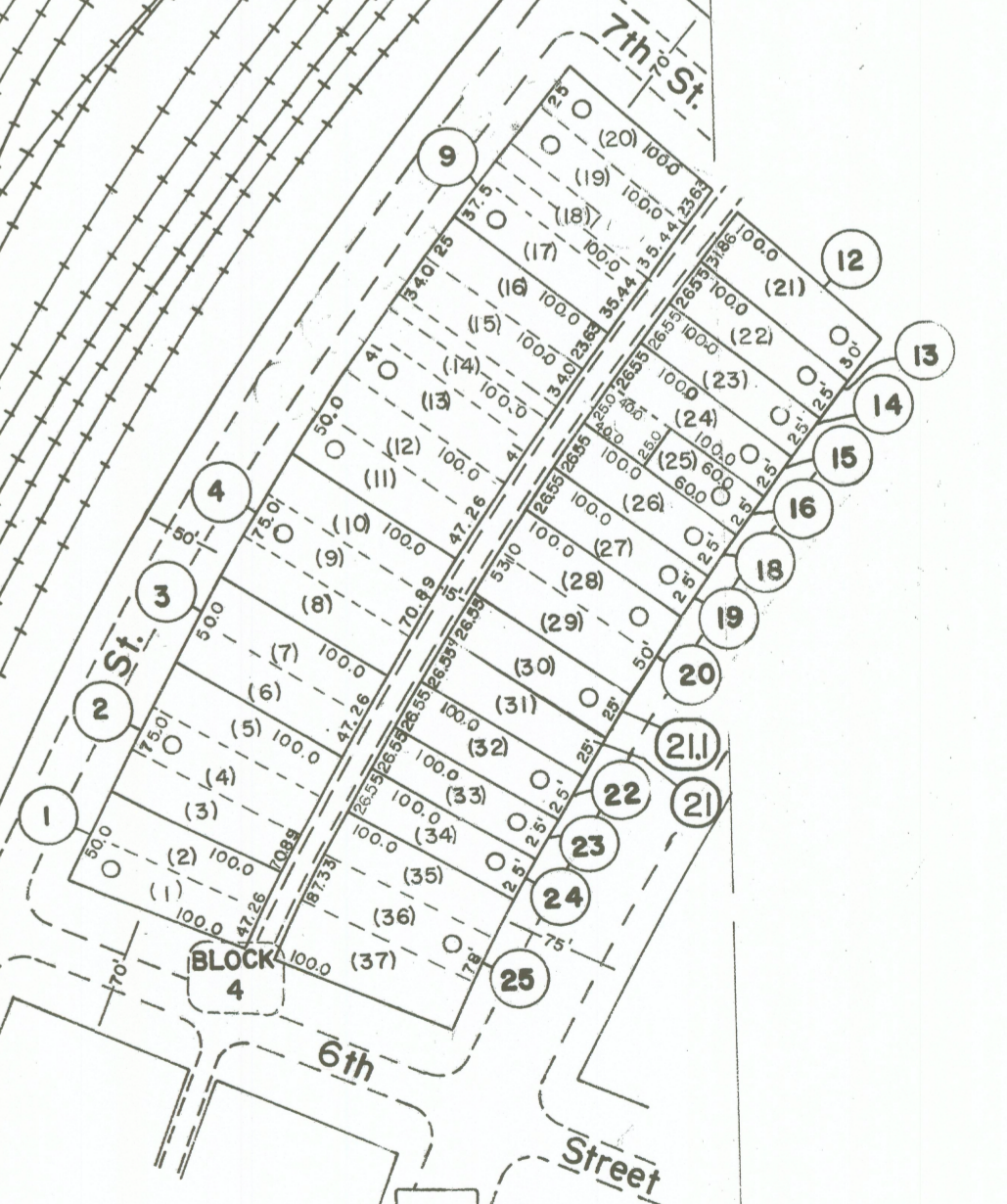
RIVER

ELK

P/O GA 7-1

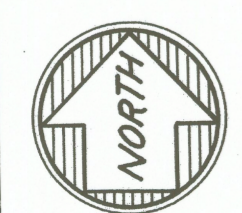


BALTIMORE & OHIO
RAILROAD



GA-6GA-7
GA-8GA-9

GA-6
GA-8



For Tax Purposes Only

Prepared by
VOGT, IVERS AND ASSOCIATES
ENGINEERS-ARCHITECTS
CHARLESTON, W.VA.
CINCINNATI, OHIO

Property line
Edge of pavement or roadway
Corporation line
District line
County line

Original lot line
Dead lot number
Parcel or index number
Improvement
Rollroad

Revisions	
1	3-10-76 T.E. 9
2	Revised to 7-1-80 10
3	" " 7-1-83 C.B.G. 11
4	7/1/84 R.L.B. 12
5	EXCALIBUR GRAPHICS 5/93 13
6	O.G.I.S. 1-1-95 J.E.B. 14
7	5-1-97 J.E.B. 15
8	5/4/2003 S.B.H. 16
9	2-20-16 H.H.S. 17
10	
11	
12	
13	
14	
15	
16	
17	
18	
19	
20	
21	
22	
23	
24	

KEY MAP

GA-3GA-4
GA-6GA-7
GA-8GA-9

BRAXTON COUNTY

STATE OF WEST VIRGINIA

Office of Assessor

DISTRICT
TOWN OF GASSAWAY

SHEET NO: **GA - 6**

Date, Aerial Photography: 4-14-60
Photo No: BR 6-12-24
Date, Map: 4-2-60
Scale: 1" = 100'