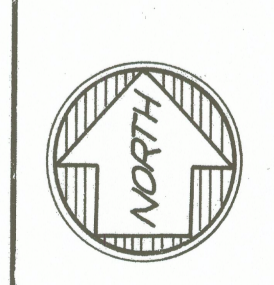
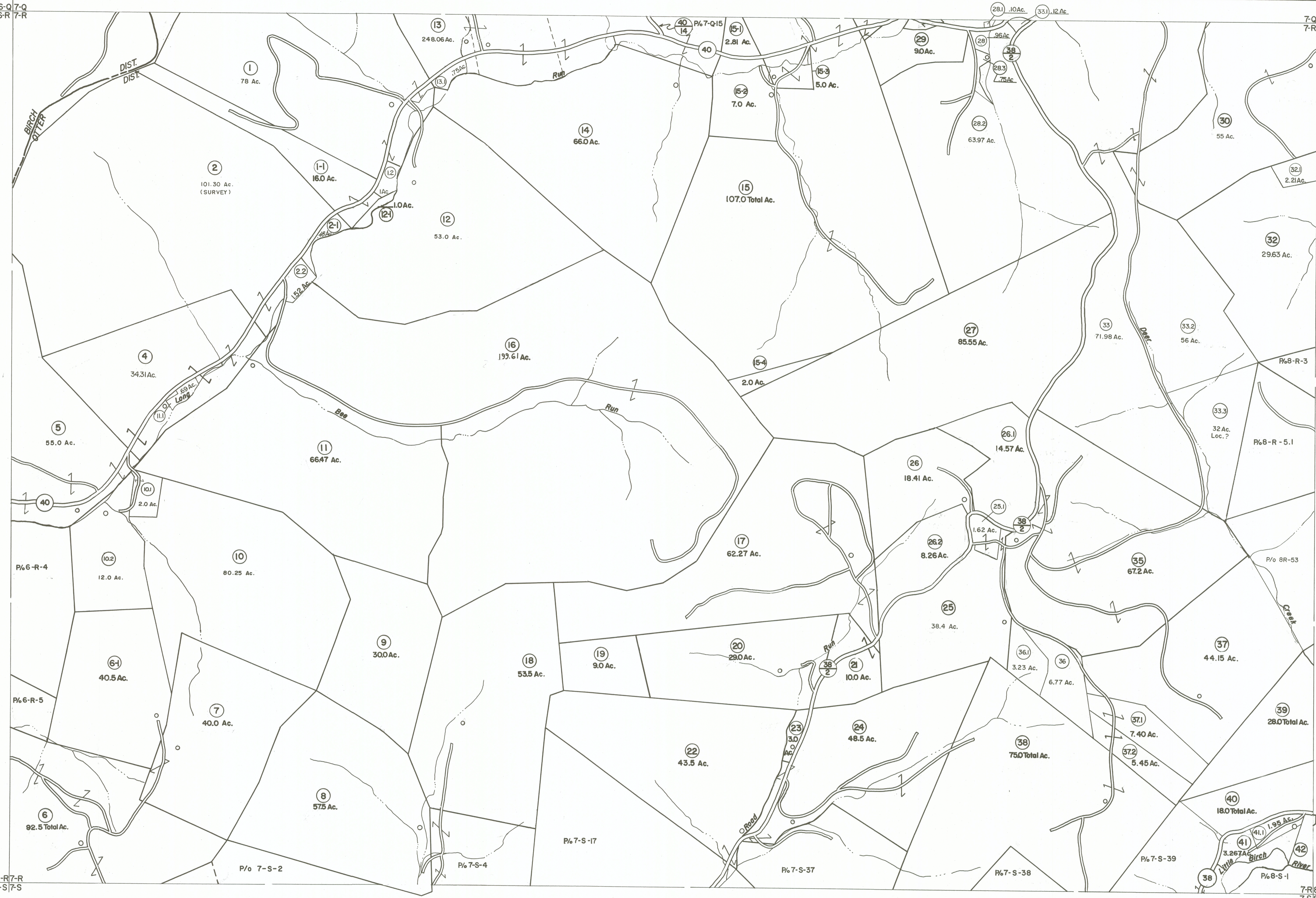


6-Q7-Q
6-R7-R

7-Q8-Q
7-R8-R

6-R7-R
6-S7-S

7-R8-R
7-S8-S



For Tax Purposes Only

Prepared by
VOGT, IVERS AND ASSOCIATES
 ENGINEERS-ARCHITECTS
 CHARLESTON, W.VA.
 CINCINNATI, OHIO

Property line	---
Edge of pavement or roadway	---
Corporation line	---
District line	---
County line	---

Original lot line	---
Deed lot number	(15)
Parcel or index number	(99)
Improvement	o
Railroad	---

Revisions	
1	PARCELS 1-1, 2-4, 6-1, 12-1, 15-1, 15-2, 15-3, 15-4, 16-1 ADDED 5-24-83
2	Revised to 7-1-83
3	Revised to 7-1-83
4	Revised to 7-1-83
5	7/1/84 RLB
6	Revised to 7-1-83
7	Revised to 7-1-83
8	OGIS 2/10/91 DSH
9	O.G.I.S. 1-1-95 J.E.B
10	OGIS 4/25/95 SAJ
11	5-1-97 J.E.B
12	5-1-99 J.E.B
13	ESI 5/30/01 REK
14	ESI 6/12/02 REK
15	5/1/03 S&H
16	4/5/04 S&H
17	5/7/05 S&H
18	4/9/06 S&H
19	4/21/08 S&H
20	4/14/09 S&H
21	3-19-10 HD
22	4-7-11 HD
23	6/9/12 S&H
24	

4/1/13	S&H
2-20-16	HD
KEY MAP	
6Q 7Q 8Q	
6R 7R 8R	
6S 7S 8S	

BRAXTON COUNTY

STATE OF WEST VIRGINIA

Office of Assessor

DISTRICT	OTTER DISTRICT
SHEET NO:	7-R
Date, Aerial Photography: 4-22-60	Date, Map: 9-14-62
Photo No: 89-12-129	Scale: 1" = 400'