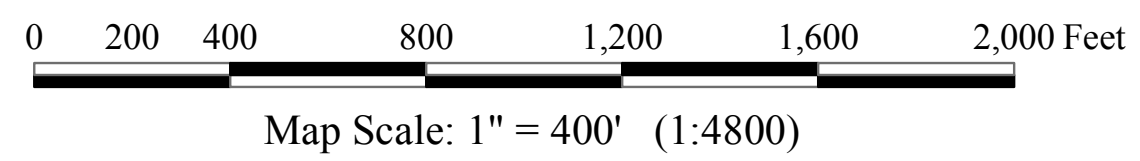


THIS DOCUMENT IS A TAX MAP. It was compiled for purposes of taxation from available record evidence and has not been field verified. This map is not a valid survey plat. The existence of data on this document does not imply any "official" status to such data. The W.V. State Tax Dept. and the Brooke County Assessor's Office assume no liability that might result from use of this document.



Office of the
Brooke County Assessor
 Thomas Oughton, Assessor

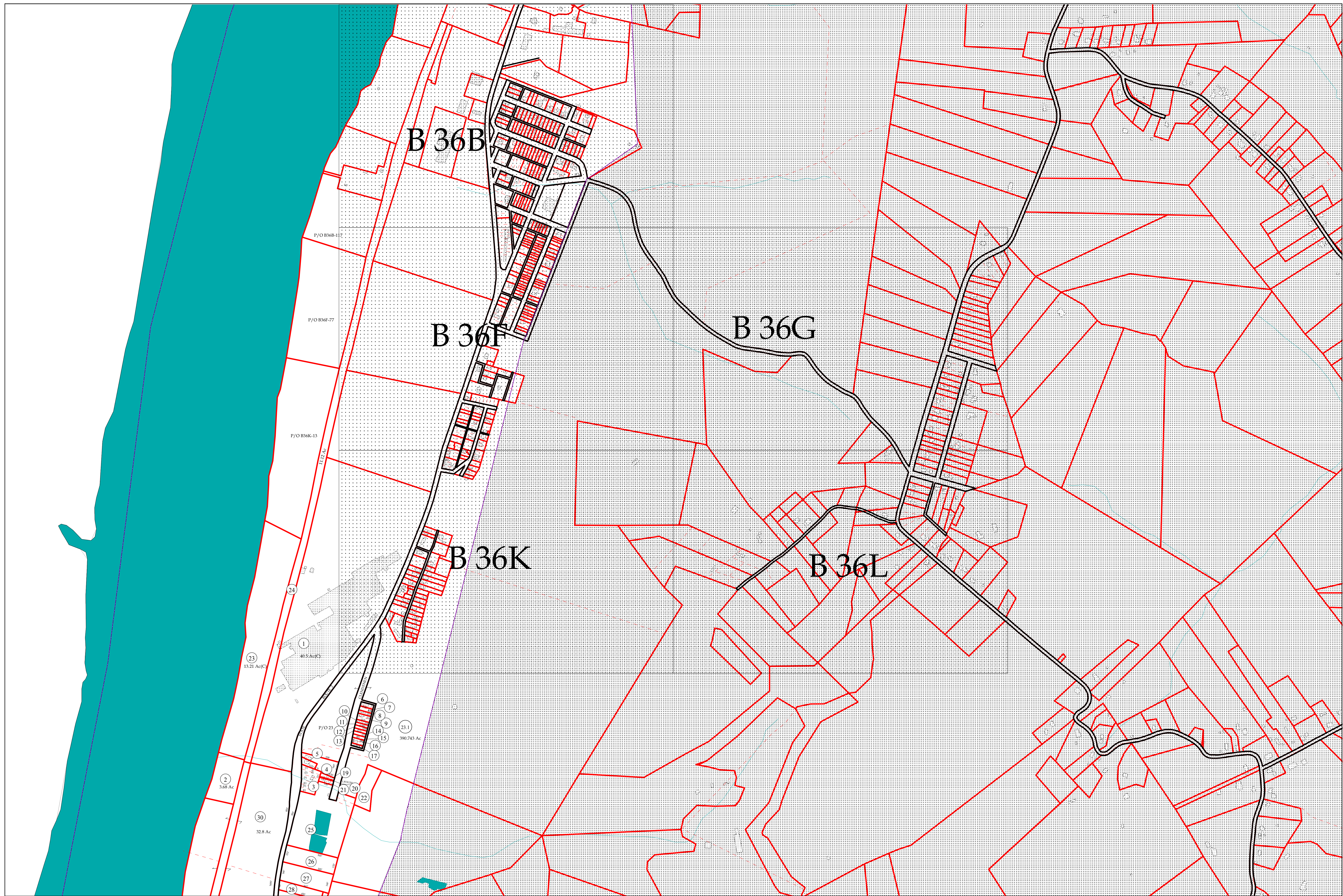
Legend	
(23) Parcel Numbers	Lot Line/Private Road/ Previous Property Line
(15) Lot Numbers	
Railroad	
District/City/ State Boundaries	
Rivers/Large Streams	
Small Streams	
Property Line	

Property Tax Mapping
 Stephanie Lallone
 Date Printed: 1-16

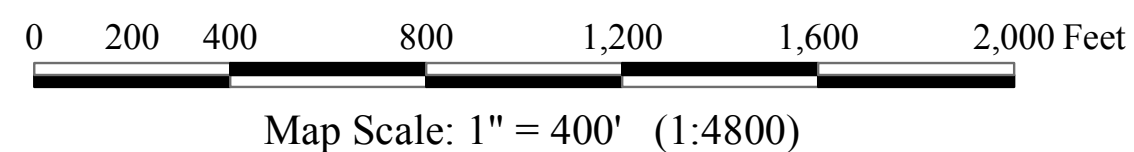
B26	B27
BB31	B32
BB36	B37

**BEECH BOTTOM
 DISTRICT**

BB31



THIS DOCUMENT IS A TAX MAP. It was compiled for purposes of taxation from available record evidence and has not been field verified. This map is not a valid survey plat. The existence of data on this document does not imply any "official" status to such data. The W.V. State Tax Dept. and the Brooke County Assessor's Office assume no liability that might result from use of this document.



Office of the
Brooke County Assessor
 Thomas Oughton, Assessor

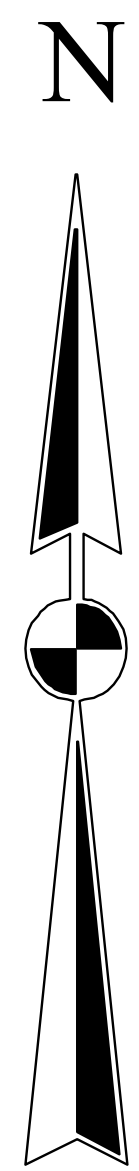
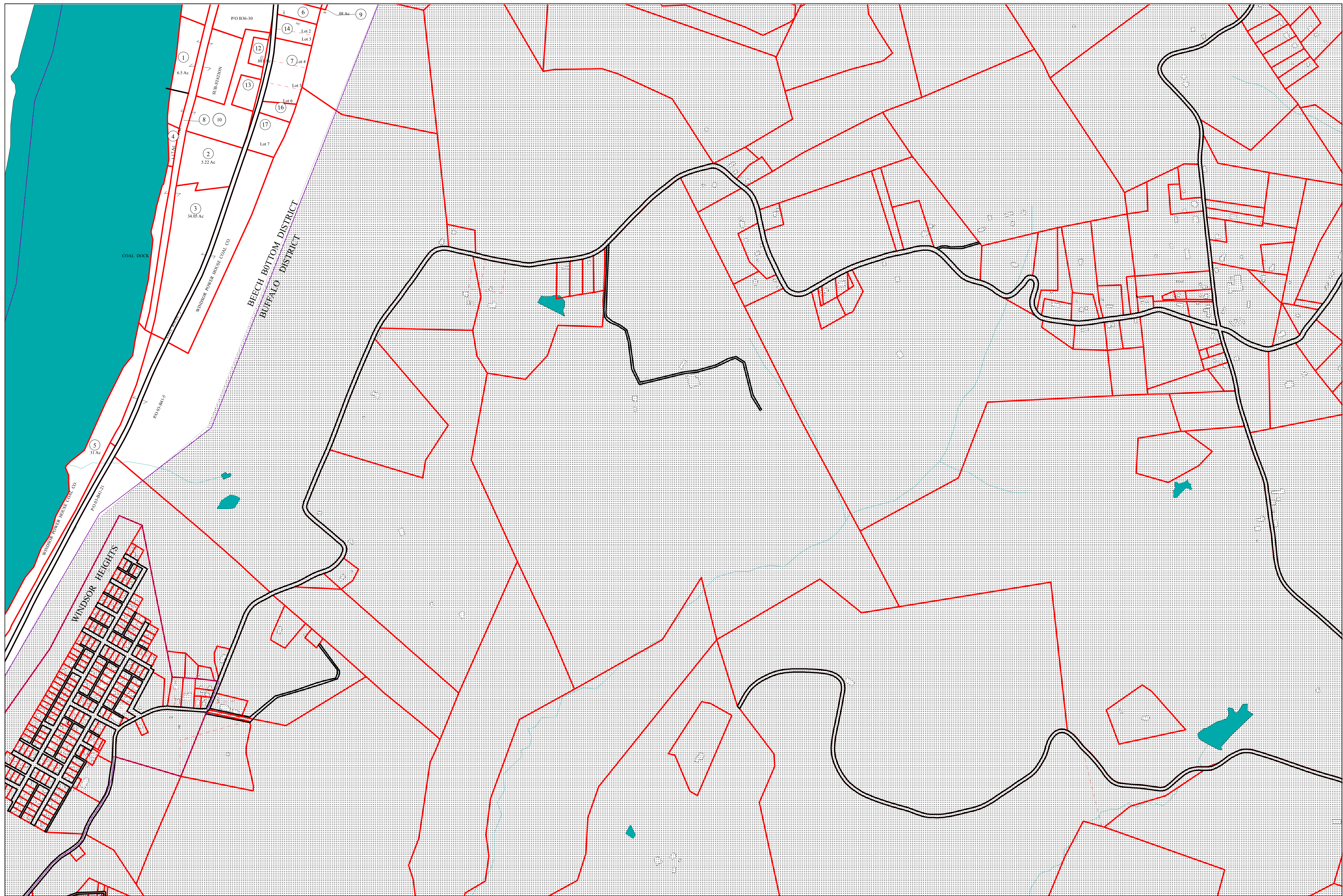
Legend	
(23) Parcel Numbers	Lot Line/Private Road/ Previous Property Line
(15) Lot Numbers	
Railroad	
District/City/ State Boundaries	
Rivers/Large Streams	
Small Streams	
Property Line	

Property Tax Mapping
 Stephanie Lallone
 Date Printed: 1-16

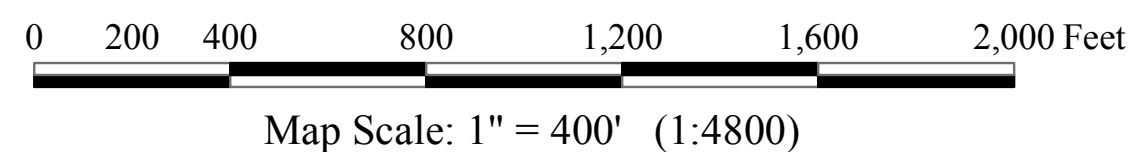
BB31	B32
BB36	B37
BB41	B42

**BEECH BOTTOM
 DISTRICT**

BB36



THIS DOCUMENT IS A TAX MAP. It was compiled for purposes of taxation from available record evidence and has not been field verified. This map is not a valid survey plat. The existence of data on this document does not imply any "official" status to such data. The W.V. State Tax Dept. and the Brooke County Assessor's Office assume no liability that might result from use of this document.



Office of the
Brooke County Assessor
 Thomas Oughton, Assessor

Legend	
(12)	Parcel Numbers
(15)	Lot Numbers
—	Railroad
—	District/City
—	State Boundaries
—	Rivers/Large Streams
—	Small Streams
—	Property Line
—	Lot Line/Private Road/ Previous Property Line

Property Tax Mapping
 Stephanie Lallone
 Date Printed: 1-16

	BB36	B37
	BB41	B42
	B45	B46

**BEECH BOTTOM
 DISTRICT**

BB41