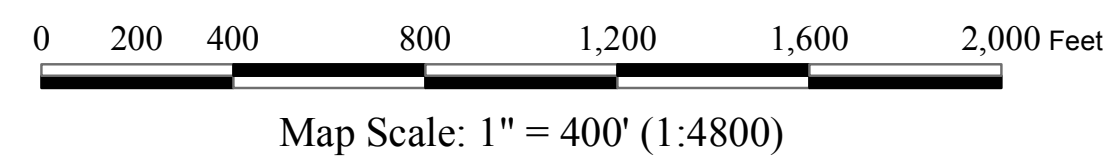


THIS DOCUMENT IS A TAX MAP. It was compiled for purposes of taxation from available record evidence and has not been field verified. This map is not a valid survey plat. The existence of data on this document does not imply any "official" status to such data. The W.V. State Tax Dept. and the Brooke County Assessor's Office assume no liability that might result from use of this document.



Office of the
Brooke County Assessor
 Thomas Oughton, Assessor

| Legend | |
|----------------------------|---|
| (23) Parcel Numbers | Lot Line/Private Road/ Previous Property Line |
| (15) Lot Numbers | Railroad |
| ----- District/City | State Boundaries |
| ----- Rivers/Large Streams | Small Streams |
| ----- Property Line | |

Property Tax Mapping
 Stephanie Lallone
 Date Printed: 1-16

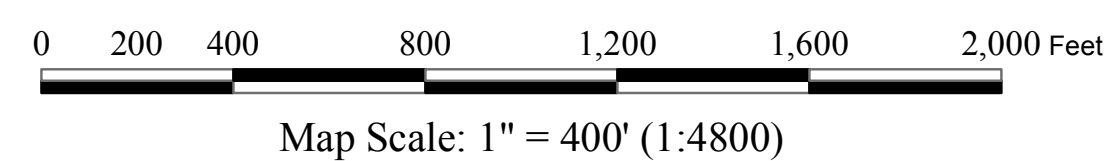
| | |
|-----|------|
| CC6 | CC7 |
| F10 | CC11 |
| F14 | CC15 |

FOLLANSBEE
 DISTRICT

F10



THIS DOCUMENT IS A TAX MAP. It was compiled for purposes of taxation from available record evidence and has not been field verified. This map is not a valid survey plat. The existence of data on this document does not imply any "official" status to such data. The W.V. State Tax Dept. and the Brooke County Assessor's Office assume no liability that might result from use of this document.



Office of the
Brooke County Assessor
 Thomas Oughton, Assessor

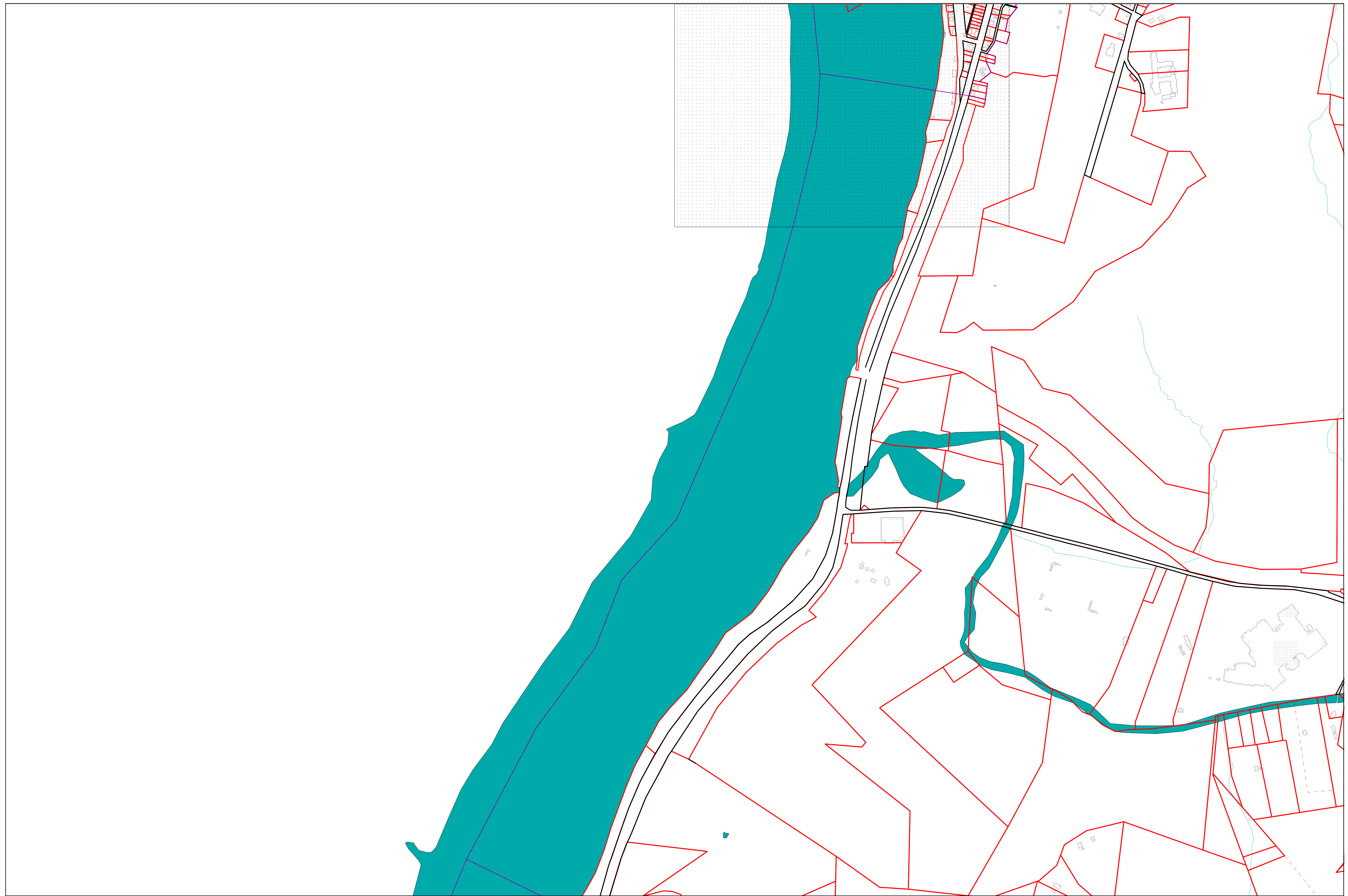
| Legend | |
|----------------------|--|
| (13) Parcel Numbers | Lot Line/Private Road/ Previous Property Line |
| (15) Lot Numbers | Railroad |
| State Boundaries | District/City |
| Rivers/Large Streams | Small Streams |
| Property Line | |

Property Tax Mapping
 Stephanie Lallone
 Date Printed: 1-16

| | |
|-----|------|
| F10 | CC11 |
| F14 | CC15 |
| F18 | CC19 |

**FOLLANSBEE
 DISTRICT**

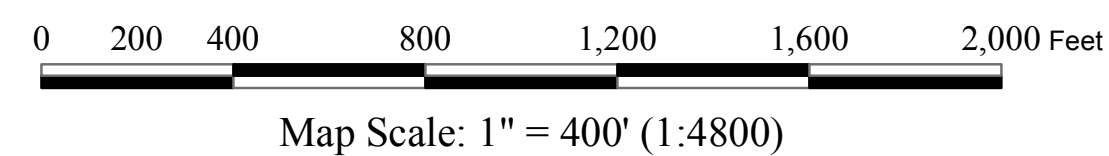
F14



N



THIS DOCUMENT IS A TAX MAP. It was compiled for purposes of taxation from available record evidence and has not been field verified. This map is not a valid survey plat. The existence of data on this document does not imply any "official" status to such data. The W.V. State Tax Dept. and the Brooke County Assessor's Office assume no liability that might result from use of this document.



Office of the
Brooke County Assessor
 Thomas Oughton, Assessor

| Legend | |
|--------|--|
| (23) | Parcel Numbers |
| (15) | Lot Numbers |
| — | Railroad |
| — | District/City |
| — | State Boundaries |
| — | Rivers/Large Streams |
| — | Small Streams |
| — | Property Line |
| — | Lot Line/Private Road/ Previous Property Line |

Property Tax Mapping
 Stephanie Lallone
 Date Printed: 1-16

| | | |
|--|------|------|
| | F14 | CC15 |
| | F18 | CC19 |
| | CC22 | CC23 |

FOLLANSBEE
 DISTRICT

F18