

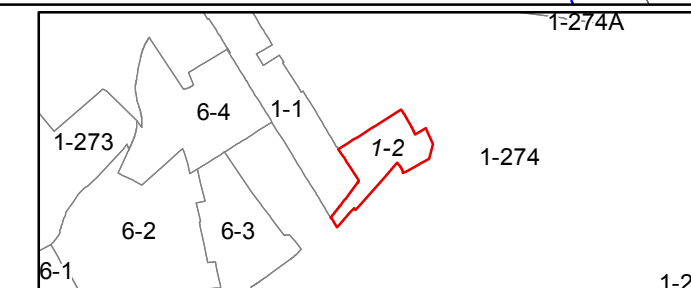
FOR TAX PURPOSES ONLY

Prepared by Hardy County, WV

Legend	
Property Line	Original Lot Line
Road Right of Way	Lot Number (15)
Corporation Line	Parcel Number (99)
District Line	Water
County Line	Railroad

R	1	Revised 7/8/2014	9		17
O	2		10		18
V	3		11		19
I	4		12		20
S	5		13		21
I	6		14		22
O	7		15		23
N	8		16		24

**STATE OF WEST VIRGINIA**  
**COUNTY OF HARDY**  
 Office of Assessor



CAPON  
SHEET 2

Date, Aerial Photography: 2003

Date, Map: 8/11/2016

Scale: 1" = 100'