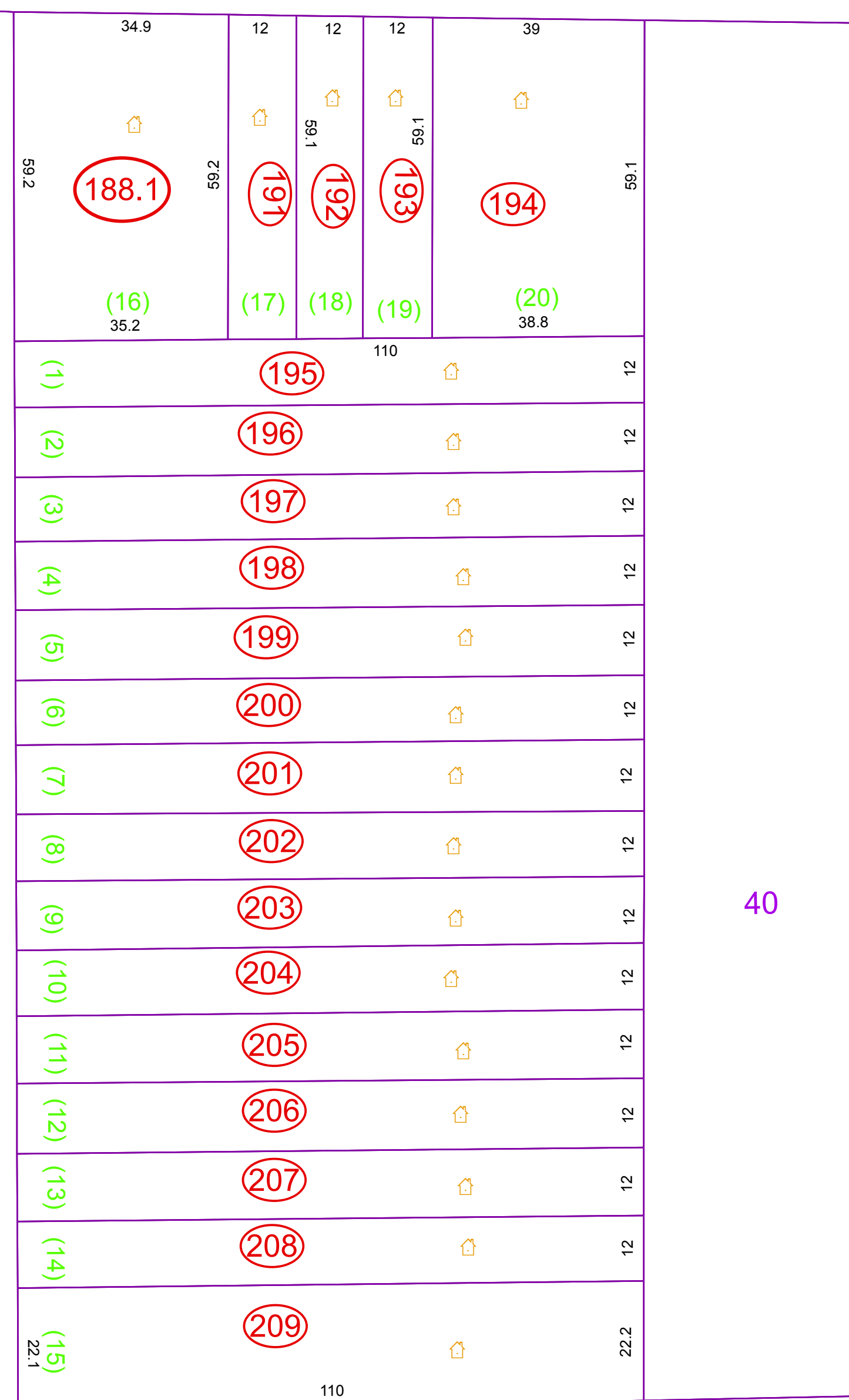


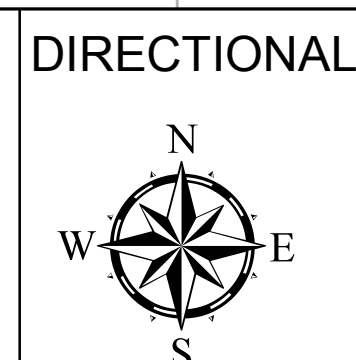
AMBROSE DRIVE



# 2-7

**FOR TAX PURPOSES ONLY**  
PREPARED BY  
**JEFFERSON COUNTY ASSESSOR'S OFFICE**

Note: Maps are updated constantly by the mapper however, maps are only printed at the beginning of the fiscal year.



**NOTICE:** All tax maps created under the provisions of reappraisal legislation are the property of the State of West Virginia and the Jefferson County Assessor's Office and the reproduction, copying, distribution or sale of such tax maps or any copies thereof, in any format, without written permission is prohibited by law.

**LEGEND**

- PROPERTY LINE
- CORPORATION LINE
- DISTRICT LINE
- COUNTY LINE
- STREAM
- EASEMENT
- ORIGINAL LOT LINE
- RAILROAD

- DEED LOT NUMBER (15)
- TAX PARCEL NUMBER (15)
- IMPROVEMENT (15)
- PP MOBILE HOME (15)
- DISTRICT NUMBER (15)
- SCALED DIMENSION (15)

**REVISIONS**

REVISIONS OUTGREW THIS SPACE AND ARE NOW MAINTAINED IN A DATABASE

**KEY MAP**

	1	1
2-7A	1-1	1
	1	1

**COUNTY OF JEFFERSON**  
**OFFICE OF THE ASSESSOR**  
**CHARLES TOWN, WV**  
**ASSESSOR: Angela Banks**  
**MAPPING SPECIALIST: Victoria Myers**

**RANSON CORPORATION**  
**DISTRICT 8**  
**MAP 1-1**

Date, Aerial Photography: 12/31/1962  
Photo No : 70

Date Printed: 8/2/2016

Date Map Created: 04/23/1963  
Scale 1"=20'