

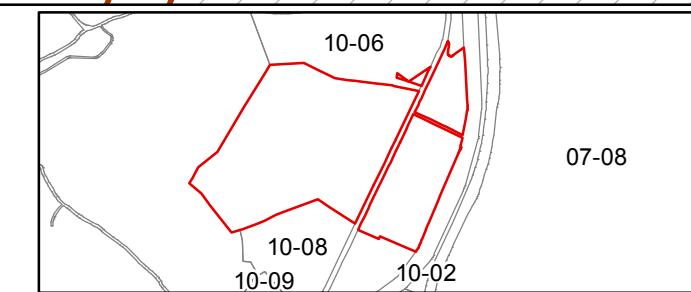


FOR TAX PURPOSES ONLY  
Prepared by Lincoln County, WV

Legend	
Property Line	Original Lot Line
Road Right of Way	Lot Number (15)
Corporation Line	Parcel Number (99)
District Line	Water
County Line	Railroad

R	1	Revised 5/12/65	9		17
O	2	Revised 7/1/81	10		18
V	3	Revised 7/1/84	11		19
J	4	Revised 7/1/87	12		20
S	5	Revised 7/1/89	13		21
J	6	Revised 7/1/96	14		22
O	7	Revised 12/30/2016	15		23
n	8		16		24

**STATE OF WEST VIRGINIA**  
**COUNTY OF LINCOLN**  
Office of Assessor



WEST HAMLIN CORPORATION  
SHEET 07  
Date, Aerial Photography: 2003  
Created: 2/1/2017  
Scale: 1" = 100'