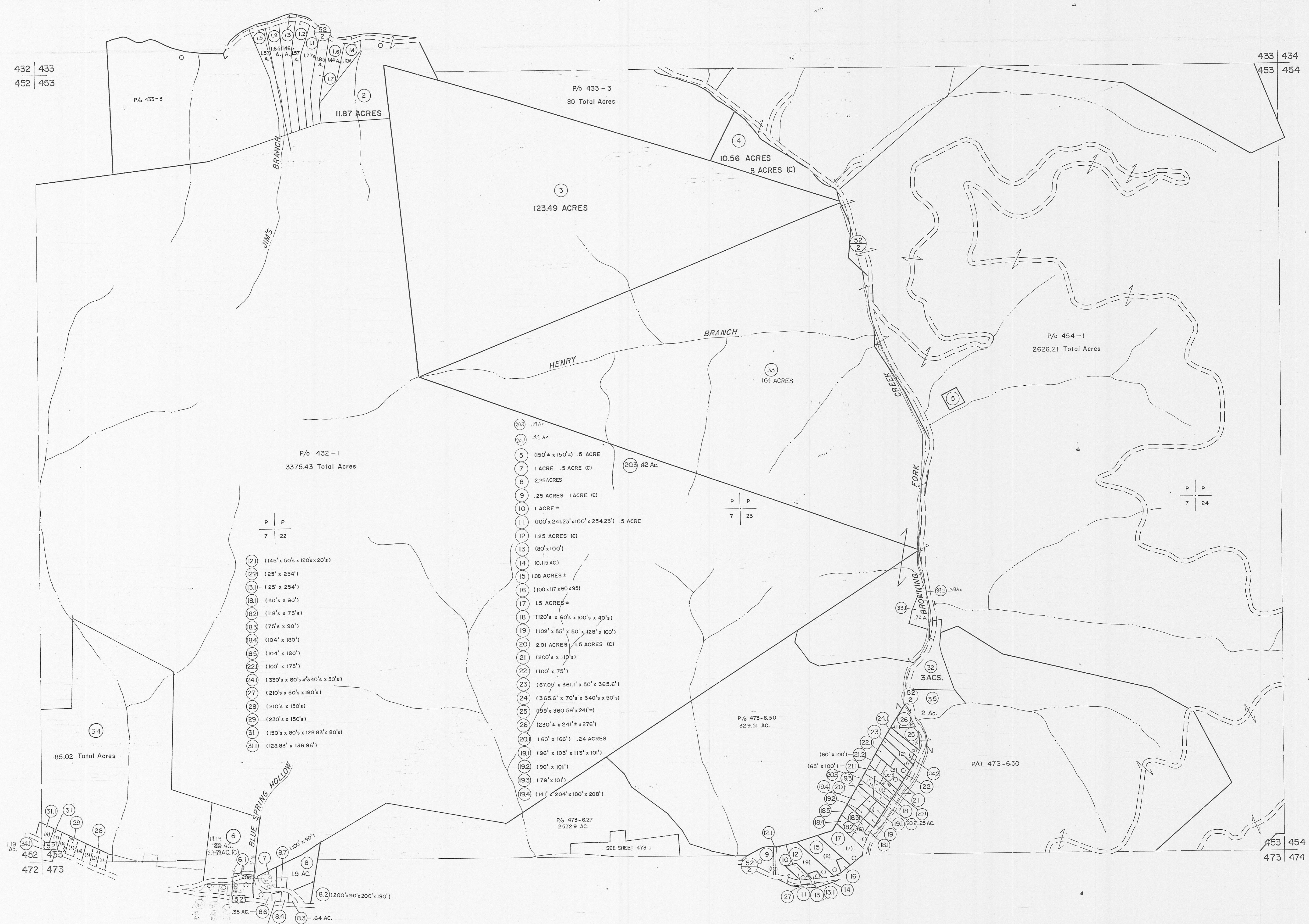


432 433
452 453

433 434
453 454



- P/o 432-1
3375.43 Total Acres
- | | |
|------|------------------------------|
| (12) | (145' x 50' x 120' x 20') |
| (12) | (25' x 254') |
| (13) | (25' x 254') |
| (18) | (40' x 90') |
| (18) | (118' x 75') |
| (18) | (75' x 90') |
| (18) | (104' x 180') |
| (18) | (104' x 180') |
| (22) | (100' x 175') |
| (24) | (330' x 60' x 340' x 50') |
| (27) | (210' x 50' x 180') |
| (28) | (210' x 150') |
| (29) | (230' x 150') |
| (31) | (150' x 80' x 128.83' x 80') |
| (31) | (128.83' x 136.96') |

- | | |
|------|---|
| (20) | .19 AC. |
| (20) | .43 AC. |
| (5) | (150' x 150') .5 ACRE |
| (7) | 1 ACRE .5 ACRE (C) |
| (8) | 2.25 ACRES |
| (9) | .25 ACRES 1 ACRE (C) |
| (10) | 1 ACRE = |
| (11) | (100' x 241.23' x 100' x 254.23') .5 ACRE |
| (12) | 1.25 ACRES (C) |
| (13) | (80' x 100') |
| (14) | (0.115 AC) |
| (15) | 1.08 ACRES = |
| (16) | (100' x 117' x 60' x 95') |
| (17) | 1.5 ACRES = |
| (18) | (120' x 60' x 100' x 40') |
| (19) | (102' x 55' x 50' x 128' x 100') |
| (20) | 2.01 ACRES (1.5 ACRES (C)) |
| (21) | (200' x 110') |
| (22) | (100' x 75') |
| (23) | (67.05' x 361.1' x 50' x 365.6') |
| (24) | (365.6' x 70' x 340' x 50') |
| (25) | (199' x 360.59' x 241') |
| (26) | (230' x 241' x 276') |
| (20) | (80' x 166') .24 ACRES |
| (19) | (96' x 103' x 113' x 101') |
| (19) | (90' x 101') |
| (19) | (79' x 101') |
| (19) | (141' x 204' x 100' x 208') |

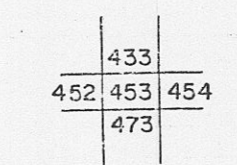
Legend

Property line	---	Original lot line	---
Edge of pavement or roadway	---	Dead lot number	(15)
Corporation line	---	Parcel or index number	(16)
District line	---	Improvement	o
County line	---	Railroad	---

Revisions

1	9-15-63	9	10-99 AM	17
2	10-1-63	10	6-21 AM	18
3	9-23-64	11	1-8 AM	19
4	3-31-84	12	8/11 AM	20
5	12-19-86	13		21
6	2-15-89	14		22
7	7-93 AM	15		23
8	2-97 AM	16		24

KEY MAP



For Tax Purposes Only

Prepared by
MICHAEL BAKER, JR., INC.
Consulting Engineers
Rochester, Pennsylvania

MINGO COUNTY
STATE OF WEST VIRGINIA
Office of Assessor

DISTRICT
STAFFORD

SHEET NO: 453

Date, Aerial Photography: April, 1961
Date, Map: July, 1962
Photo No: Scale: 1" = 400'