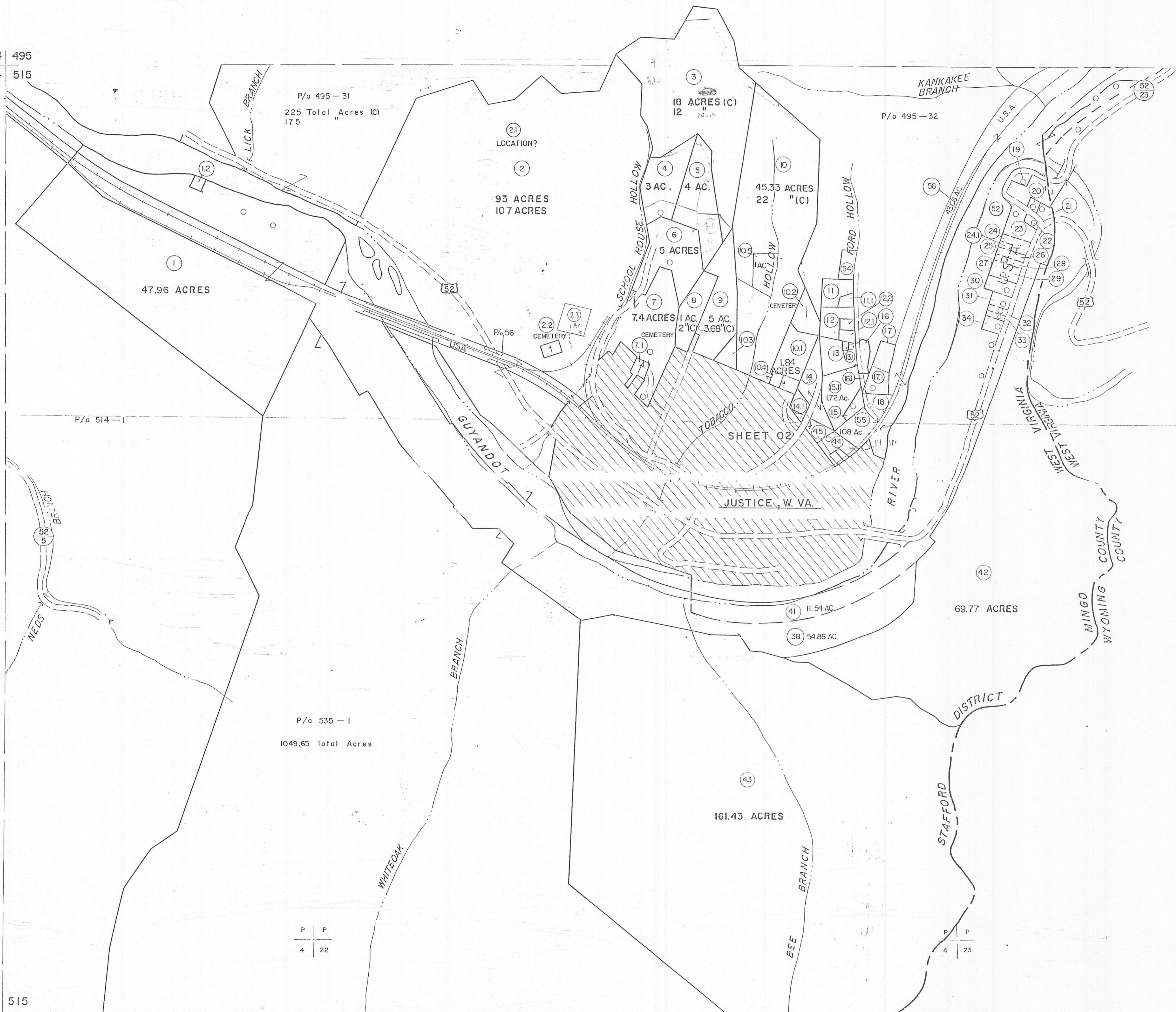


494 495  
514 515

495  
515

514 515  
534 535

515  
535



- (1) 47.96 ACRES
- (2) 93 ACRES 107 ACRES
- (3) 18 ACRES (C) 12
- (4) 3 AC.
- (5) 4 AC.
- (6) 5 ACRES
- (7) 7.4 ACRES
- (8) 1 AC.
- (9) 5 AC.
- (10) 45.33 ACRES 22 "(C)
- (11) 1.84 ACRES
- (12) 0.60 A.
- (13) .43 ACRE 1.5 ACRES (C)
- (14) 125' x 125' x 125' x 125'
- (15) .24 AC.
- (16) .41 AC. (6) .109 AC.
- (17) 0.50 ACRE .75 ACRES (C)
- (18) 1 ACRE .75 ACRE
- (19) 45.33 ACRES 22 "(C)
- (20) 184 ACRES
- (21) 184 ACRES
- (22) 184 ACRES
- (23) 184 ACRES
- (24) 184 ACRES
- (25) 184 ACRES
- (26) 184 ACRES
- (27) 184 ACRES
- (28) 184 ACRES
- (29) 184 ACRES
- (30) 184 ACRES
- (31) 184 ACRES
- (32) 184 ACRES
- (33) 184 ACRES
- (34) 184 ACRES
- (35) 184 ACRES
- (36) 184 ACRES
- (37) 184 ACRES
- (38) 54.88 AC.
- (39) 54.88 AC.
- (40) 54.88 AC.
- (41) 11.54 AC.
- (42) 69.77 ACRES
- (43) 161.43 ACRES
- (44) 172 AC.
- (45) 108 AC.
- (46) 172 AC.
- (47) 108 AC.
- (48) 172 AC.
- (49) 108 AC.
- (50) 172 AC.
- (51) 108 AC.
- (52) 172 AC.
- (53) 108 AC.
- (54) 172 AC.
- (55) 108 AC.
- (56) 172 AC.

Prepared by  
MICHAEL BAKER, JR., INC.  
Consulting Engineers  
Pottsville, Pennsylvania

Symbol	Description
---	Edge of pavement or roadbed
---	Corporation line
---	District line
---	County line
---	Parcel or index number
---	Improvement
---	Railroad

Revisions	Date	By	Check
1	11-1-69		
2	9/25/74	Quinn	JC
3	3-31-84		
4	10-22-85	Quinn	JC
5	6-1-87	L.E.S.	

PLAT	DATE
495	
514	
515	
535	

MINGO COUNTY  
STATE OF WEST VIRGINIA

DISTRICT  
STAFFORD  
SHEET NO: 515