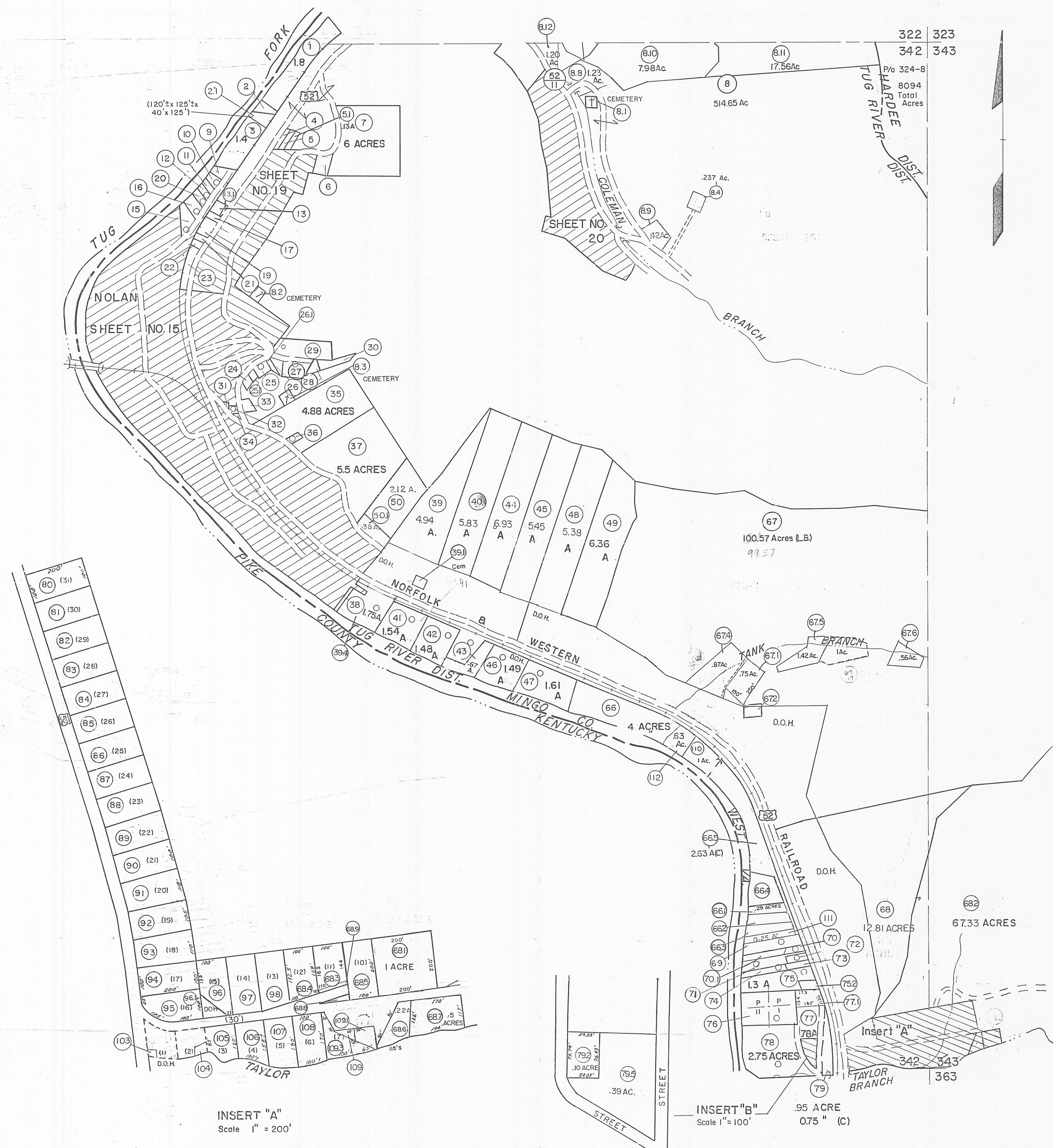


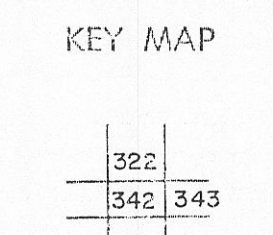
- | | |
|---------------------------------------|--|
| 2 (30' x 130' ± x 100' x 110' ±) | 59 (80' x 97') |
| 4 (40' x 150' ±) | 60 (90' x 97' ±) |
| 5 (40' x 150' ±) | 61 (57' x 115' ± x 55' x 130' ±) |
| 6 (100' x 150') | 62 (50' x 130' ± x 120' ± x 139' x 9' x 26') |
| 9 (100' ± x 110' ± x 55' x 120' ±) | 63 (50' x 100' x 26' x 92') |
| 10 (100' ± x 130' ± x 56' x 110' ±) | 64 (50' x 100' x 45' x 100') |
| 11 (40' x 125' ± x 40' x 130' ±) | 65 (119' x 26' x 9' x 52' x 105' x 80' ±) |
| 12 (40' x 140' ± x 40' x 125' ±) | 69 (110' x 420' ± x 110' x 370' ±) 0.5A 1 A(C) |
| 13 (40' x 110' ±) | 70 .09 ACRE .38 ACRE(C) |
| 14 (40' x 110' ±) | 71 .25 ACRE .34 ACRE(C) |
| 15 (130' ± x 190' ± x 40' ± x 150' ±) | 72 (50' x 140') |
| 16 (90' ± x 150' x 80' ± x 140' ±) | 73 (40' x 160') |
| 17 (40' ± x 110' ±) | 74 (40' x 300' ± x 40' x 280' ±) |
| 18 (80' x 110' ±) | 76 1.8 ACRES |
| 19 (40' ± x 110' ±) | 80 100' x 170' x 100' x 180' |
| 20 (55' x 140' ± x 55' x 130' ±) | 662 (75' x 200') |
| 21 (40' ± x 110' ± x 40' ± x 100' ±) | 661 (75' x 200' x 50' x 200') |
| 22 (40' ± x 100' ± x 40' ± x 80' ±) | 662 (50' x 200') |
| 23 (30' x 300') | 664 (150' x 200' x 250' x 200') |
| 24 (50' x 100') | 752 (70' x 108') |
| 25 (100' ± x 110' ±) | 251 (95' x 220' x 220' x 230') .57A .06 A(C) |
| 26 .122 ACRE .15 ACRE(C) | 261 (125' x 65' x 60' x 20' ±) |
| 27 (200' x 150' x 150' x 125') | |
| 28 (14' x 85' x 100' x 126') | 81 (75' x 75') |
| 29 (100' x 280' x 120' x 383') | 83 (80' x 80' ±) |
| 30 (267' ± x 50' ± x 220' ± x 85') | 82 (100' x 70' ±) |
| 31 (110' ± x 70' ± x 75' ±) | 99 (70' x 80' ±) |
| 32 (50' ± x 90' ± x 50' ± x 70' ±) | 672 (90' x 120' ±) |
| 33 (90' x 75' x 100' ± x 100' ±) | 688 (100' x 20' x 100' ±) |
| 34 (90' ± x 90' ± x 110' ±) | 70 .16 ACRE |
| 36 (50' x 100') | 13 (128' x 15' x 128') |
| 38 (20' x 175') | |
| 51 (150' x 200' x 200' x 100') | |
| 52 (150' x 100' x 150' x 200') | |
| 53 1 ACRE 0.33 ACRE(C) | |
| 54 (43.5' x 200') | |
| 55 (70' x 150') | |
| 56 (57' x 80') | |
| 57 (40' x 150') | |
| 58 (50' x 180') | |



For Tax Purposes Only
Prepared by
MICHAEL BAKER, JR., INC.
Consulting Engineers
Rochester, Pennsylvania

| Legend | |
|-----------------------------|-----------------------------|
| Property line | Original lot line |
| Edge of pavement or roadway | Dead lot number (15) |
| Corporation line | Parcel or index number (29) |
| District line | Improvement (O) |
| County line | Railroad |

| Revisions | |
|----------------------|-------------------|
| 1 9-15-63 | 9 Cancelled 11-90 |
| 2 10-1-63 | 10 2-13-73 A.M. |
| 3 11-1-63 | 11 10-27-73 A.M. |
| 4 9-12-74 | 12 2-9-77 A.M. |
| 5 3-31-74 | 13 6-28-78 A.M. |
| 6 9-22-86 | 14 1-20-88 A.M. |
| 7 6-1-87 | 15 5-01 A.M. |
| 8 Revised to 2-15-89 | 16 4-05 B.A.M. |



MINGO COUNTY
STATE OF WEST VIRGINIA
Office of Assessor

DISTRICT
TUG RIVER
SHEET NO: 342
Date, Aerial Photography: April, 1961
Photo No. _____
Date, Map: July, 1962
Scale: 1" = 400'