

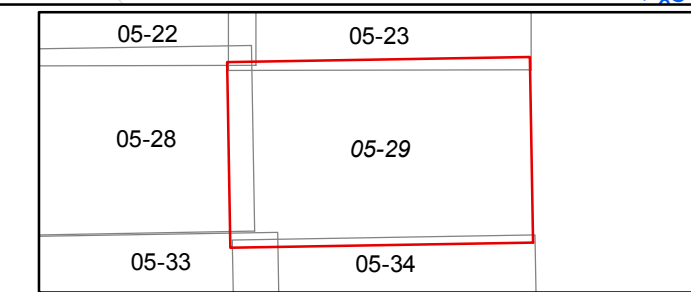
FOR TAX PURPOSES ONLY

Prepared By:
Norb Netzel
 Monroe County Assessor

Legend	
Property Line	Original Lot Line
Road Right of Way	Lot Number (15)
Corporation Line	Parcel Number (99)
District Line	Water
County Line	Railroad

R	11	Revised 3/1/15	9	17
e	2	Revised 3/1/16	10	18
v	3	Revised 3/1/16	11	19
i	4	Revised 12/30/2016	12	20
s	5		13	21
l	6		14	22
n	7		15	23
s	8		16	24

STATE OF WEST VIRGINIA
COUNTY OF MONROE
 Office of Assessor



SPRINGFIELD
 Map: 29

Date, Aerial Photography: 2003
 Date, Map: 1/25/2017
 Scale: 1" = 400'