

FOR TAX PURPOSES ONLY

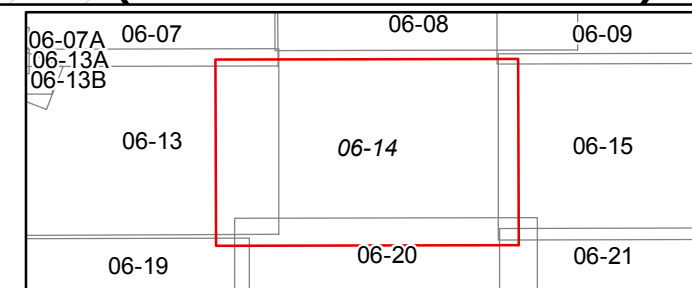
Prepared By:
Norb Netzel
 Monroe County Assessor

Legend

Property Line	Original Lot Line
Road Right of Way	Lot Number (15)
Corporation Line	Parcel Number (99)
District Line	Water
County Line	Railroad

R	1	Revised 3/1/15	9	17
O	2	Revised 3/1/16	10	18
V	3	Revised 12/30/2016	11	19
I	4		12	20
S	5		13	21
I	6		14	22
O	7		15	23
N	8		16	24

STATE OF WEST VIRGINIA
COUNTY OF MONROE
 Office of Assessor



SWEET SPRINGS
 Map: 14
 Date, Aerial Photography: 2003
 Date, Map: 1/25/2017
 Scale: 1" = 400'