

FOR TAX PURPOSES ONLY

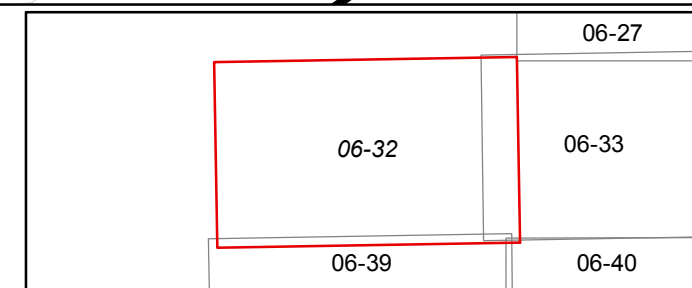
Prepared By:
Norb Netzel
 Monroe County Assessor

Legend

Property Line	—	Original Lot Line	—
Road Right of Way	—	Lot Number	(15)
Corporation Line	—	Parcel Number	(99)
District Line	- - - -	Water	—
County Line	- - - -	Railroad	—

R	1	Revised 3/1/15	9		17
O	2	Revised 3/1/16	10		18
V	3	Revised 12/30/2016	11		19
I	4		12		20
S	5		13		21
I	6		14		22
O	7		15		23
N	8		16		24

STATE OF WEST VIRGINIA
COUNTY OF MONROE
 Office of Assessor



SWEET SPRINGS
 Map: 32
 Date, Aerial Photography: 2003
 Date, Map: 1/25/2017
 Scale: 1" = 400'