

07-21-12

06-39-1

06-41-1

06-40-10

1
105.3 Ac.

2
102 Ac.

3
24 Ac.

5.1
2 Ac.

5
6.45 Ac.

6.1
2.61 Ac.

6
9.28 Ac.

6.3
85 Ac.

6.2
1.49 Ac.

6.3
1.49 Ac.

15
2

22
2.19 Ac.

22.1
2 Ac.

21.4
3.83 Ac.

21
2.94 Ac.

23
35.02 Ac.

4
163 Ac.

21.1
60.42 Ac.

15

21.3
31 Ac.

21.5
3 Ac.

21.7
1 Ac.

21.2
1.64 Ac.

32.1
2.23 Ac.

7
10 Ac.

15
4 Ac.

18
67.22 Ac.

9
21.5 Ac.

10
44 Ac.

11
45.75 Ac.

12
13 Ac.

13
16.41 Ac.

13.1
15.87 Ac.

14
59.5 Ac.

20
254 Ac.

29
4 Ac.

28.1
5.09 Ac.

28
4.91 Ac.

25.1
1.71 Ac.

26
1.81 Ac.

27
1.81 Ac.

34.1
7.02 Ac.

31
68.25 Ac.
55.83 ACC

32
76.56 Ac.

36
51.14 Ac.

30
26.88 Ac.

24
189.08 Ac.

33
144.22 Ac.

35
152.66 Ac.

32.1

9 Ac.

06-41-4

06-41-3

06-41-10

06-41-6

06-41-17

06-41-17.3

06-41-17.1

06-41-18.9

SMITH RD

SMITH RD

PLEASANT VALLEY RD

LIMESTONE HILL RD

LIMESTONE HILL RD

FOR TAX PURPOSES ONLY

Prepared By:

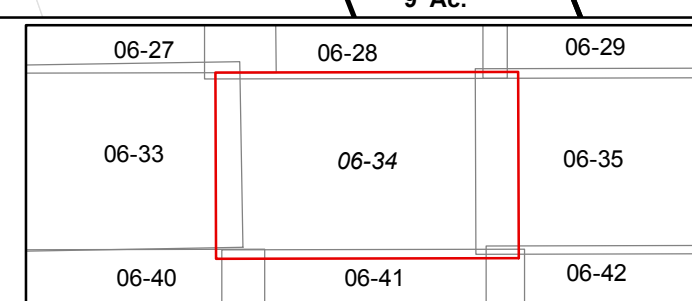
Norb Netzel
Monroe County Assessor

Legend

Property Line	—	Original Lot Line	- - - - -
Road Right of Way	—	Lot Number	(15)
Corporation Line	—	Parcel Number	(99)
District Line	—	Water	—
County Line	—	Railroad	—

R	1	Revised 3/1/15	9	17
0	2	Revised 3/1/16	10	18
V	3	Revised 3/1/16	11	19
I	4	Revised 12/30/2016	12	20
S	5		13	21
I	6		14	22
O	7		15	23
N	8		16	24

STATE OF WEST VIRGINIA
COUNTY OF MONROE
Office of Assessor



SWEET SPRINGS
Map: 34
Date, Aerial Photography: 2003
Date, Map: 1/25/2017
Scale: 1" = 400'